



# The LSU Game

RICE CAMPUS ☆ OCTOBER 4, 1952

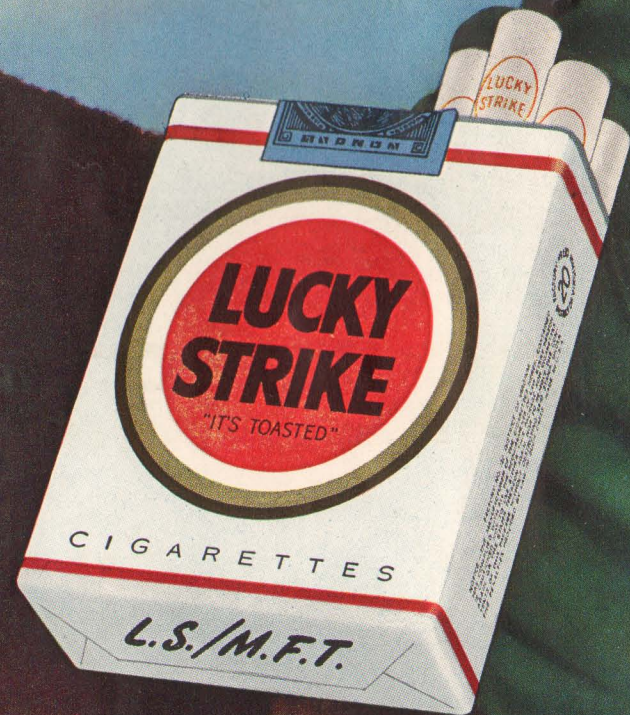
OFFICIAL PROGRAM — TWENTY FIVE CENTS



DOROTHY COLLINS,  
"The Sweetheart of Lucky Strike,"  
says:

Be Happy-  
**GO LUCKY!**

**LUCKIES  
TASTE  
BETTER!**



**L.S./M.F.T.-Lucky Strike Means Fine Tobacco**

COPR., THE AMERICAN TOBACCO COMPANY

**ONLY ONE  
CAN BE  
BEST**

*Taste Tru-Ade  
and judge for yourself*



THE  
*Natural*  
SOFT DRINK



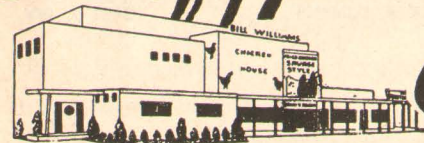
## **SOUTH TEXAS NATIONAL BANK**

*Progressive Banking Service Since 1886*

213 MAIN STREET • HOUSTON, TEXAS  
MEMBER FEDERAL DEPOSIT INSURANCE CORPORATION



*Satisfy Your Hunger at*



# **Bill Williams**

6515 SOUTH MAIN  
OPPOSITE RICE INSTITUTE

**GOOD FOOD TO FIT YOUR APPETITE AND YOUR POCKETBOOK**

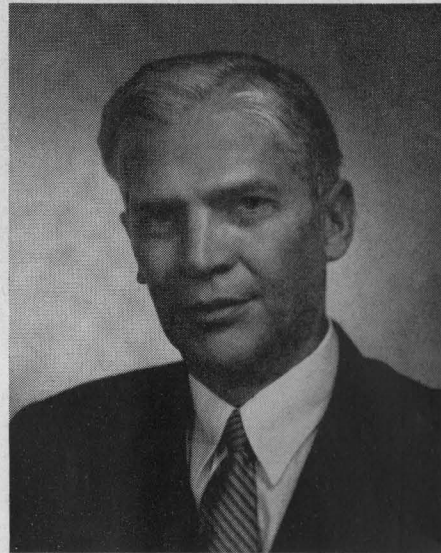
The Rice Athletic Association Would Appreciate Your Patronizing Our Advertisers

BOARD OF GOVERNORS OF THE RICE INSTITUTE

TRUSTEES



GUS S. WORTHAM



GEORGE R. BROWN  
Chairman



LAMAR FLEMING, JR.



WILLIAM A. KIRKLAND



J. NEWTON RAYZOR



DR. FREDERICK R. LUMMIS



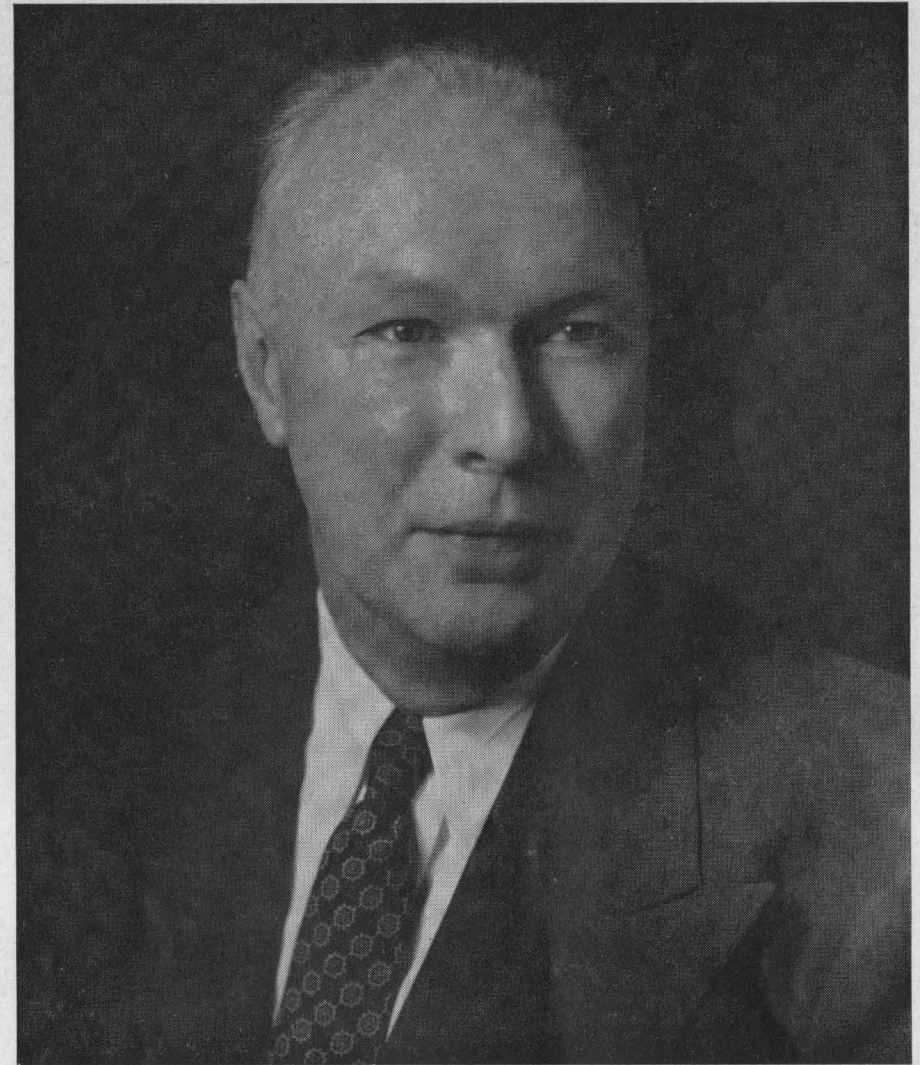
JOHN S. IVY

TERM MEMBERS

HERBERT ALLEN  
ROBERT P. DOHERTY

FRANCIS T. FENDLEY  
H. MALCOLM LOVETT

ROBERT H. RAY  
HARMON WHITTINGTON



DR. WILLIAM V. HOUSTON  
President, The Rice Institute

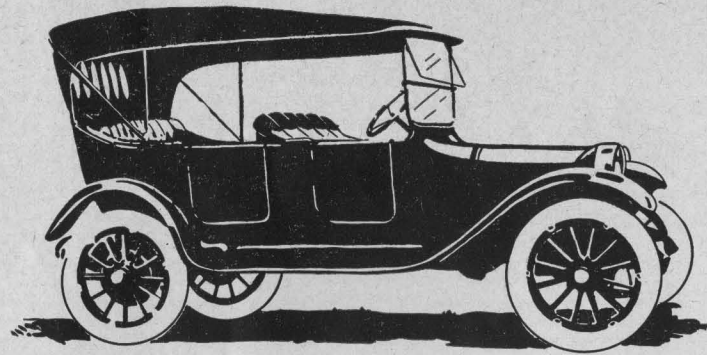
Just forty years ago the first class of freshmen entered the Rice Institute. That first freshman class organized a football team and played a schedule involving some satisfying victories along with some overwhelming, if not spectacular, defeats.

Today the Rice Institute welcomes you, its guests, to a stadium which bears little resemblance to the ball park in which our first games were played. Our physical facilities have grown with the city of Houston and because of the interest and help of its citizens.

You are all invited to spend a little time looking around the rest of our campus. Some of you may not have seen the Fondren Library, Wiess Hall, or the Abercrombie Laboratory. We hope you will visit them.

In particular, we hope you enjoy the game you have come to see. May you not be disappointed in its outcome more than half the time.

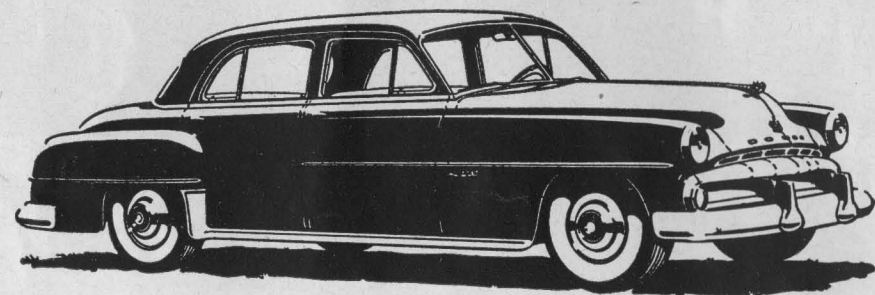
WILLIAM V. HOUSTON



**38 YEARS**

**of automotive service to Texans**

Choose a beautiful new DODGE  
from a dependable dealer . . .



**Jackson Motors, Ltd.**

ALBERT H. BERRY

JACK W. JACKSON

*Texas' Oldest Dodge and Plymouth Dealer*

2404 South Main

• HOUSTON



Best wishes, always  
to the BLUE and GRAY!

**Cameron**

**IRON WORKS, INC.**

HOUSTON

**THE RICE INSTITUTE ATHLETIC COACHING STAFF**



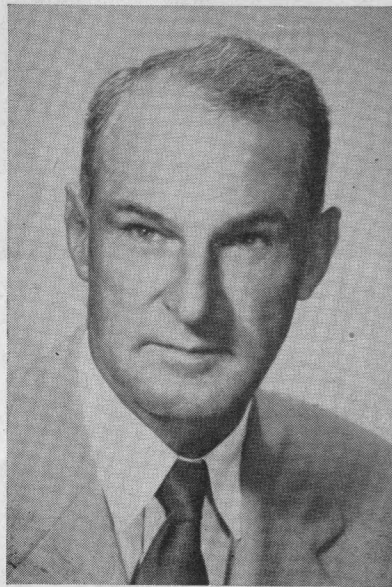
**JOE DAVIS**  
Line Coach

**CECIL GRIGG**  
Backfield Coach

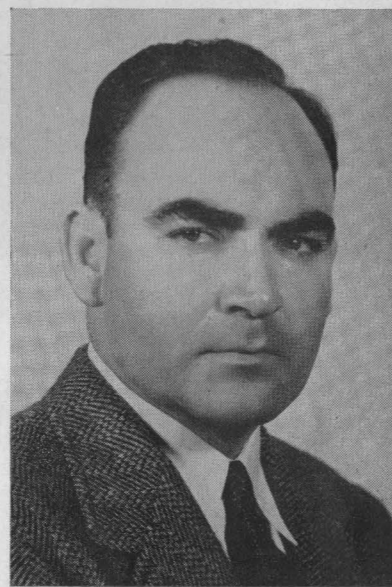
**A. M. BALE**  
End Coach

**DELL MORGAN**  
Asst. Coach

**CHARLES MOORE**  
Freshman Football Coach  
Freshman Basketball Coach



**JESS NEELY**  
Head Football Coach  
Athletic Director



**EMMETT BRUNSON**  
Track Coach  
Bus. Mgr. of Athletics



**HAROLD STOCKBRIDGE**  
Asst. Coach

**DON SUMAN**  
Basketball Coach

**EDDIE WOJECKI**  
Head Trainer

**CARROLL MARTIN**  
Office Manager

**BILL WHITMORE**  
Sports News Director

OFFICIAL WATCH FOR THIS GAME

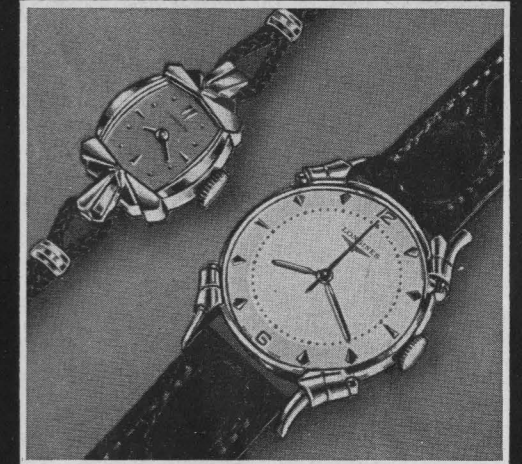


*Longines*



*The World's Most Honored Watch*

ACCEPTED AS OFFICIAL WATCH  
FOR TIMING  
CHAMPIONSHIP SPORTS EVENTS  
IN ALL FIELDS ALL OVER THE WORLD



*Product of  
Longines-Wittnauer Watch Company*

As constructors of the Rice Stadium, we take great satisfaction from the contests played here—not from the final score, but from the knowledge that on this field there is rivalry without rancor, defeat without dishonor, and victory without tyranny.

In this great game look not for the shoddy, the dishonest, the shirker and the fraud, for here he cannot survive.



**Brown & Root, Inc.**

*Engineers — Constructors*  
HOUSTON

# TOUCHDOWN!



Touchdown or take off with a Beech and you'll know you've got a champion on your hands. In Beech's Executive Transport and Bonanza models you'll find the World's finest airplanes designed specifically to meet the requirements of leading executives who appreciate the importance of air travel in modern industry.

To match these unexcelled planes, J. D. Reed has built a superior sales and service organization in keeping with the high standards demanded by those who accept only the best.

J.D. REED

CO. Inc.

Beechcraft

DISTRIBUTOR

HOUSTON  
Municipal Airport



## TONIGHT'S GAME

BY BILL WHITMORE  
Rice Sports News Director

This is the 25th meeting of the two perennial football powers of the bayou country, and it shapes up as another typical all-out Rice-L.S.U. grid battle.

Both teams are in a mood for revenge. The Owls want to get even for a disappointing 6-7 loss to the Tigers at Baton Rouge last fall, while in 1950 in their last Houston appearance the Louisiana club was racked up 35-20 in their new Rice Stadium debut.

Both teams are playing what might be termed "suicide schedules" in '52, but the Tigers already have had two of their toughest games while the Owls had probably the easiest test of their card last Saturday night. Having disposed of Texas Tech 34-7 with unexpected ease, the followers of the Owls have contained their enthusiasm a bit until their team gets a sterner rival—and the Tigers fit the bill. Although they dropped their first two games, the Bengals gave powerful Texas a closer battle than the 35-14 score indicated, and it took a last gasp touchdown for highly rated Alabama to nip L.S.U. 21-20 last Saturday.

The game affords Houston area fans an opportunity to see how they like the unique numbering system being employed by L.S.U. this fall.

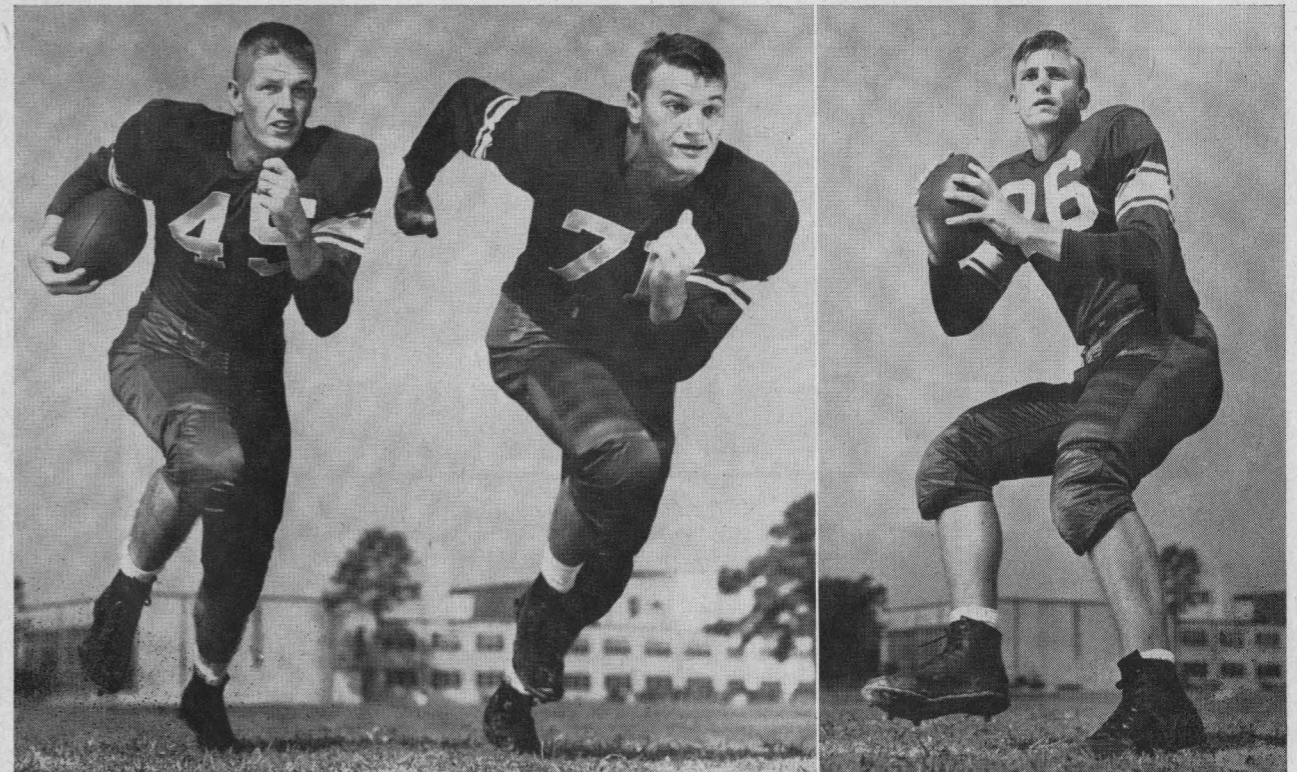
Rather than the conventional double numbers, the Tigers are identified by a letter for their position, i.e. "E" for the ends, "T" for the tackles, etc., plus a number.

The visitors boast of several players as individual stars—such men as quarterbacks Norman Stevens and Cliff Stringfield (whose extra point nipped the Owls last fall), halfbacks Jerry Marchand and Leroy Labat, a colorful character nicknamed "the Black Stallion" and whose St. James, La. home town fans follow him to every game in chartered busses and sit in a body.

The Owls hope their running game can be even partially as effective as last week when they whizzed up and down the field almost at will against Tech, with fullback "Kosse" Johnson garnering 144 yards net, not including two touchdown runs of 32 and 15 yards called back for penalties. Billy Ed Daniels scampered for 81 yards.

The Rice passing game was only mildly successful, primarily because the receivers were dropping the ball on occasion. That phase of activity was the subject of much work in the week's practice sessions, and should be improved.

Following tonight's game the Owls get little rest, for next Saturday they play West Coast power U.C.L.A. in Los Angeles Coliseum before starting a "home stand" that brings S. M. U., Texas, and Wisconsin into Rice Stadium on consecutive weekends.



"Kosse" Johnson

Bill Crockett

Leroy Fenstemaker

Here are some Rice Owls slated to see action tonight who figured rather prominently in last week's victory over Texas Tech. On the left is a striking action shot of junior letterman fullback "Kosse" Johnson and the leader of the offensive line whose blocking helped him make those long runs, co-captain Bill Crockett. On the right is reserve quarterback Leroy Fenstemaker, who saw some duty as man-under, but whose foot figured a lot in the game. The big junior from Llano does the extra point kickoff chores.

Spring Air

"Lastic Foam"

MATTRESSES and BOX SPRINGS

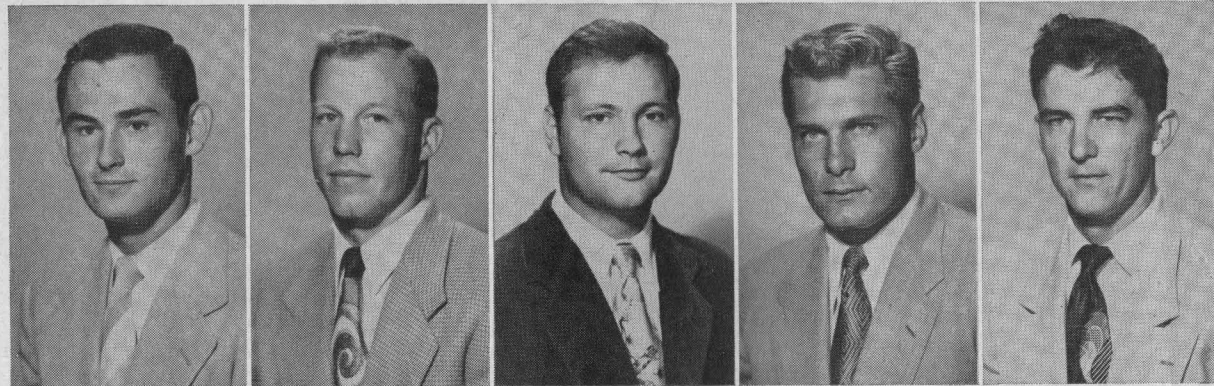
America's Finest Bedding Equipment

PARKER BEDDING COMPANY

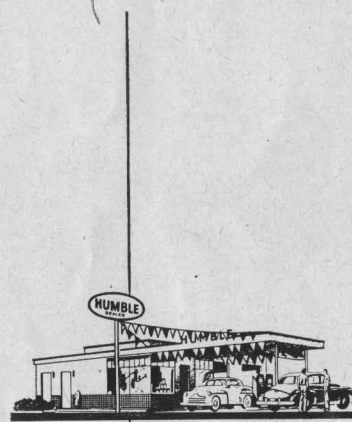
FREDERICK PARKER

HOUSTON

JOEL PARKER



11—Horton Nesrsta 15—Dickie Bob Haddox 16—Bobby Warren 19—Bob Garbrecht 20—Oree "Buzzy" Bryan



Welcome to  
\* **FOOTBALL**  
**HEADQUARTERS**

\*That means:

welcome under  
the Humble sign in  
your neighborhood.

**HUMBLE**

**HUMBLE OIL & REFINING CO.**

OFFICIAL SIGNALS ADOPTED BY NATIONAL COLLEGIATE ATHLETIC ASSOCIATION

For the best signal in **TV...**

see



**BLACK-DAYLITE**  
**TELEVISION**



Huge screen, beautiful compact cabinet and on-the-spot picture realism—it's G-E Model 21T4. Go into a huddle with your dealer—fast. Ask him to demonstrate the features.

When you can't get to the game,  
the next best thing is G-E Model 21T4!



1. OFFSIDE



2. ILLEGAL POSITION OR PROCEDURE



3. ILLEGAL MOTION OR SHIFT



4. DELAY OF GAME



5. PERSONAL FOUL



6. ROUGHNESS AND PILING ON



7. CLIPPING



8. ROUGHING THE KICKER



9. UNSPORTSMANLIKE CONDUCT



10. DEFENSIVE HOLDING



11. ILLEGAL USE OF HANDS AND ARMS



12. INTENTIONAL GROUNDING



13. ILLEGALLY PASSING OR HANDING BALL FORWARD



14. FORWARD PASS OR KICK CATCHING INTERFERENCE



22. TIME-OUT



21. SAFETY



20. TOUCHDOWN OR FIELD GOAL



19. BALL DEAD; IF HAND IS MOVED FROM SIDE TO SIDE: TOUCHBACK



18. CRAWLING, HELPING THE RUNNER OR INTERLOCKED INTERFERENCE



17. INCOMPLETE FORWARD PASS, PENALTY DECLINED, NO PLAY OR NO SCORE



16. BALL ILLEGALLY TOUCHED, KICKED OR BATTED



15. INELIGIBLE RECEIVER DOWN FIELD ON PASS



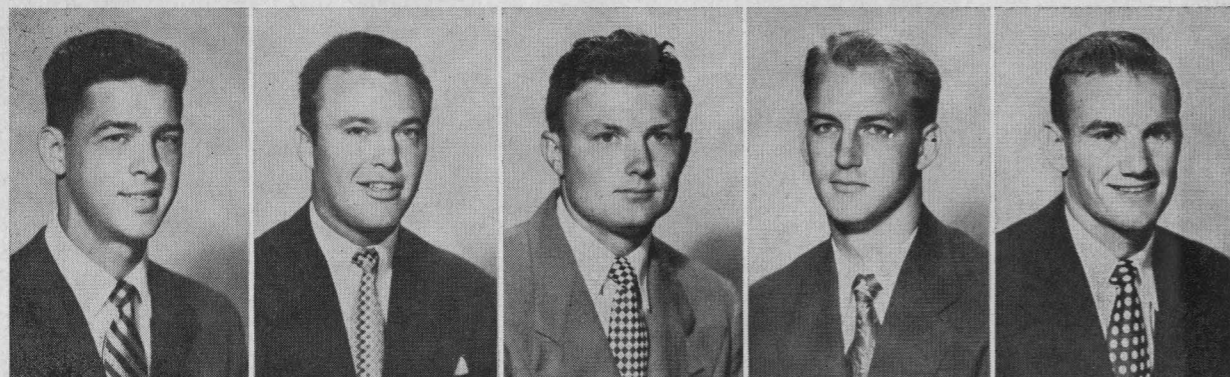
FOLLOW YOUR TEAM TO THE GAME

*Fly*

**TRANS-TEXAS**

*Airways*

CALL TRANS-TEXAS  
OR YOUR LOCAL  
TRAVEL AGENT



21—Atchley Proctor    22—Billy Ed Daniels    23—Bill Gaskamp    24—Dan Drake    25—Buddy Grantham

**We are Proud . . .**

Of our many young depositors who are starting now to acquire the independence of a savings account—the satisfaction of planned financing.

For over 30 years it has been our policy to extend to our customers a friendly understanding of their financial responsibilities. We invite you to drop by 712 Main to talk with us about our Free Services, Savings Plans, Loan Plans, Trust Facilities and Normal Charge Services.

Member Federal Deposit Insurance Corporation

**National Bank of Commerce**  
OF HOUSTON  
"The Bank of Courtesy"



**WINNING COMBINATION . . .**

Dependability and economy are the star performers on the United Gas service team. Dependability plays an important part throughout every season of the year . . . making it possible for your family to constantly enjoy the comfort and convenience offered by fine gas appliances. And because your natural gas service is so economical, it represents the wisest fuel investment you can make in your home, your business or your industry. United Gas is proud to have the opportunity of making this important gas service available to you and your neighbors.

For The Best In Gas Service  
Call . . . Blackstone 0271



**UNITED**

**GAS**

THE BIGGEST BARGAIN IN YOUR HOME TODAY — PHONE AT 5111  
87 Years of Dependable GAS Service to Houstonians

The Rice Athletic Association Would Appreciate Your Patronizing Our Advertisers



**The Shamrock**

HOUSTON

*"America's Magnificent Hotel"*

*For the*  
**All-American  
Week-End**



Make The Shamrock your headquarters hotel — where gracious hospitality and a warm welcome await you. You'll enjoy the comfort, the faultless service, the superb cuisine, the luxurious facilities that only The Shamrock affords its guests.

**Cavalcade of Stars**

There's always exciting big-name entertainment in The Shamrock's famed Emerald Room . . . stars of stage, radio and motion pictures appear continually, in person, in the Cavalcade of Stars. You'll enjoy your "night out" in The Shamrock's supper clubs.

**GLENN McCARTHY, President**

**M. JACK FERRELL, Managing Director**



**Foote's Cafeteria**

*Houston's Finest Suburban Dining Room*

2 Blocks West of Stadium

Continuous Service 11:00 A.M. to 8:30 P.M.

2407 RICE BOULEVARD

7 Days a Week

**CONSOLIDATED CHEMICAL INDUSTRIES INC.**

**Heavy Chemicals for Industry**

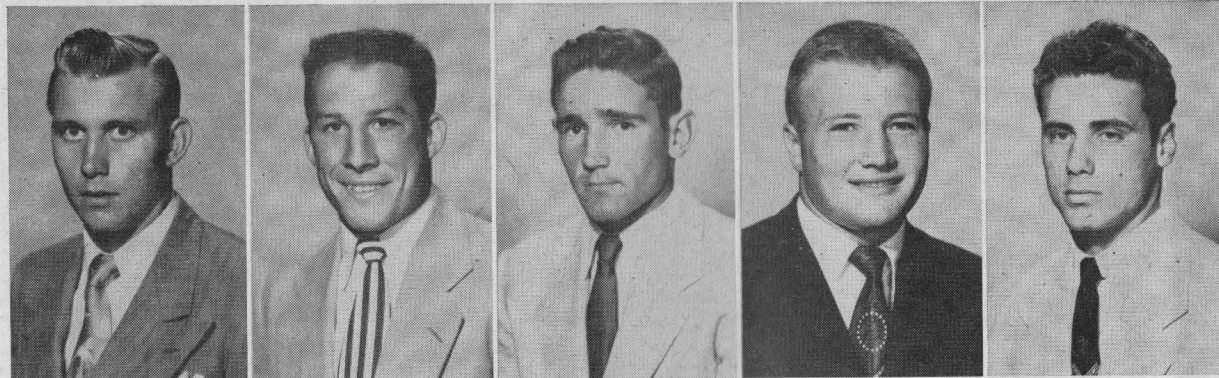
640 MELLIE ESPERSON BLDG.  
HOUSTON 2, TEXAS

NAME BRAND  
**Sporting Goods**

OPEN DAILY 9 A.M.-6 P.M.

**HOUSTON SPORTS SHOP**

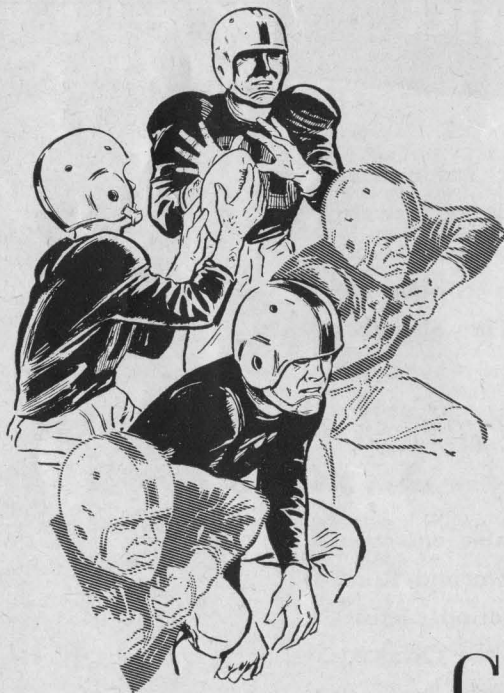
4717 Main Street, Houston • Telephone KE-8660, JU-2131



26—Leroy Fenstemaker    31—Morris Stone    35—Bill Frazier    36—Gordon Kellogg    39—Don Costa



40—Tommy Lynch    42—Don Whittaker    43—Carl Johnson    45—David Johnson    47—Dicky Moegle



*You,  
Your Great Southerner  
and Life Insurance*

are an unbeatable combination for  
winning financial independence for  
your family and yourself.

**GREAT SOUTHERN**  
*Life Insurance Company*



4310 Dunlavy • Houston 6, Texas



**EVERYBODY'S  
YELLING FOR**

**THE BEER WITH THAT  
SMOOTH, MILD FLAVOR**

Yes Sir, — here's a beer to cheer — Southern Select! The beer with that smooth, mild flavor! It has the extra point that makes the difference — It's Pilsenized — light and bright — always tastes just right! One taste of this wonderful golden dry brew and you'll yell for the "Sparkle beer", too!

IT'S PILSENIZED — HAS SPARKLE

**Southern Select** BEER

GALVESTON-HOUSTON BREWERIES, INC., GALVESTON, TEXAS

Enjoy  
the Finest Steaks  
Obtainable

**YOU SELECT** the steak of your choice from our gleaming Steak Bar;

**YOU BRAND IT** as you wish it prepared: "R" for rare, "M" for medium, etc.

**WE COOK IT** on our grill, or our brand new charcoal broiler, as you prefer.

ERNEST COKER'S

**Ye Old College Inn**

6545 SOUTH MAIN

LY-6484

Serving Hours: 5 p.m. to 11 p.m. daily  
Noon til 9 p.m. Sunday

CLOSED TUESDAY

## Rice Freshman Football

Two big home games here at the Rice Stadium feature the five-game schedule of the 1952 Rice Institute freshman football team. On Friday night, October 17th, the Owlets play the S.M.U. Colts and on Friday night, October 24th, they entertain the University of Texas first year team.

Several outstanding high school players of 1951 are among the squad learning the intricacies of the Rice grid system under the tutelage of head coach Charley Moore and Harold Stockbridge.

Tickets to the two big home games of the freshman team may be purchased at the ticket window at the Rice Gymnasium.

Here is the complete schedule for the Owlets for '52:

- 3 October (Friday) 2 p.m.  
T.C.U. Freshmen at Fort Worth
- 10 October (Friday) 8 p.m.  
Del Mar Junior College at Corpus Christi
- 17 October (Friday) 8 p.m.  
S.M.U. Freshmen at Rice Stadium
- 24 October (Friday) 8 p.m.  
Texas Freshmen at Rice Stadium
- 6 November (Thursday) 2 p.m.  
Texas A. & M. Freshmen at College Station

# UNIVERSAL

## PACKING & GASKET CO.

Houston Owned  
and Operated



Home of Universal, where packings and gaskets are manufactured for every industrial need.



The Rice Athletic Association Would Appreciate Your Patronizing Our Advertisers

# Refreshing

DRINK

*Coca-Cola*

REG. U.S. PAT. OFF.

### RICE INSTITUTE (Offense)

#### BY POSITIONS

LE Bridges 89	LT Timmons 69	LG Little 61	C Moore 56	RG Lee 62	RT Crockett 71	RE Day 80
			QB Drake 24			
	LH Daniels 22				RH C. Johnson 43	
			FB D. Johnson 45			

### L. S. U. (Defense)

#### BY POSITIONS

LE Murphy E0	LT Miller T7	LG Shaw G5	RG Lawrence G6	RT Sanford T4	RE Guglielmo E8
		LLB Davis L5		RLB Dildy C5	
	LH Oakley F3			RH O'Callaghan R5	
			S Brancato L2		

See line-ups on page 20 for L. S. U. offense and Rice defense



COPYRIGHT 1952. COCA-COLA COMPANY

HOUSTON COCA-COLA BOTTLING COMPANY ★ 2800 BISSONNET

# FOR YOU

# FIRST PREMIUM QUALITY CIGARETTE REGULAR AND KING-SIZE!

## LOUISIANA STATE SQUAD

No.	Name	Pos.	Wt.	Age
E 0	Murphy, Sammy	RE	215	21
E 2	Mobley, Larry	RE	185	20
E 3	Nealy, Wendall	LE	180	20
E 4	Tuminello, Joe	RE	185	19
E 5	McLeod, Ralph	LE	202	23
E 6	Mitchell, Jim	RE	190	20
E 7	Smith, Guy	LE	170	19
E 8	Gugliemo, Al	RE	210	19
E 9	Emberg, Ronald	LE	200	23
T 1	Martorana, Guy	LT	205	21
T 2	Horn, Frank	RT	205	21
T 3	Oliver, George	LT	205	21
T 4	Sanford, Jim	RT	225	21
T 5	Robichaux, Al	LT	210	21
T 6	Flettrich, Leon	RT	200	19
T 7	Miller, Paul	LT	220	21
T 8	Fournet, Sid	RT	227	20
G 0	Lansing, Bill	RG	207	22
G 1	Gassie, Herb	LG	200	21
G 2	Leake, Sam	RG	200	21
G 3	Modicut, Joe	LG	215	21
G 4	Alford, Andy	RG	190	22
G 5	Shaw, Elton	LG	220	19
G 6	Lawrence, Bob	RG	215	20
G 7	Beron, Phil	LG	190	20
G 8	Dye, Don	RG	220	22
G 9	McAdam, Joe	LG	215	20
C 3	Camp, Ivan	C	195	20
C 4	Jones, Larry	C	185	18
C 5	Dildy, Gary	C	210	18
Q 3	Stringfield, Cliff	QB	185	20
Q 5	Shepherd, Tommy	QB	195	23
Q 7	Stevens, Norman	QB	180	21
L 2	Brancaio, George	LHB	165	21
L 3	Rachal, Willard	LHB	170	20
L 4	Nicolo, Sal	LHB	165	21
L 5	Davis, Grady	LHB	190	20
L 6	Johns, Levi	LHB	175	19
R 1	Juenke, Billy	RHB	165	21
R 2	Simmons, Ray	RHB	175	19
R 3	Doggett, Al	RHB	175	20
R 4	Prescott, Dickie	RHB	185	18
R 5	O'Callaghan, Joe	RHB	190	22
R 6	Marchand, Jerry	RHB	185	21
F 3	Oakley, Charley	FB	165	21
F 5	Huddleston, Danny	FB	175	20
F 7	Labat, Leroy	FB	190	22
F 8	Gautreaux, Russ	FB	170	20

## RICE INSTITUTE SQUAD

No.	Name	Pos.	Age	Ht.	Wt.
11	Horton Nesrsta, 54	B	21	5-9	149
15	Dickie Bob Haddox, 53	B	20	5-9	162
16	Bobby Warren, 55	B	20	5-7	165
19	Bob Garbrecht, 54	B	20	6-1	200
20	Oree "Buzzy" Bryan, 55	B	20	6-1	185
21	Atchley Proctor, 55	B	18	6-0	170
22	Billy Ed Daniels, 53	B	21	6-0	168
23	Bill Gaskamp, 54	B	20	5-10	167
24	Dan Drake, 54	B	21	6-2	190
25	Buddy Grantham, 54	B	19	6-2	175
26	Leroy Fenstermaker, 54	B	20	6-2	195
31	Morris Stone, 55	B	19	5-9	167
35	Bill Frazier, 53	B	21	5-10	165
36	Gordon Kellogg, 55	B	19	5-10	171
39	Don Costa, 55	B	19	6-0	194
40	Tommy Lynch, 55	B	20	6-0	182
42	Don Whittaker, 54	B	19	6-1	192
43	Carl Johnson, 54	B	19	5-11	179
45	David Johnson, 54	B	20	6-0	176
47	Dicky Moegle, 55	B	18	6-0	167
49	Gino Biasatti, 55	B	20	5-10	185
50	Ronald Lassiter, 55	C	20	6-2	202
54	Don Rhoden (c-c), 53	C	19	5-11	200
55	Leo Rucka, 54	C	21	6-2	204
56	Bobby Moore, 53	C	22	6-2	205
59	Jimmy Jax, 55	C	19	6-2	200
60	Kenny Paul, 55	G	19	5-11	195
61	Gene Little, 53	G	23	6-0	205
62	LaMar "Skip" Lee, 54	G	20	6-0	197
63	Jerry Fitzpatrick, 55	C	20	6-1	202
64	Walter Schleyer, 54	G	20	5-11	190
65	Dan Hart, 54	G	20	5-10	195
66	Dan "Hans" Wagner, 55	G	21	6-1	205
67	W. C. Treadway, 54	G	20	6-1	200
68	Larry Lundstedt, 55	G	18	5-11	188
69	James Timmons, 53	G	22	6-1	198
70	John Hudson, 54	T	19	6-0	212
71	Bill Crockett (c-c), 53	T	20	6-2	206
72	Max Schuebel, 54	T	20	6-1	210
73	LaVon Cox, 55	T	19	6-0	230
74	Robert Cashion, 55	T	20	6-1	217
75	Layton Golemon, 55	T	18	6-4	210
76	James Ellis, 55	T	19	6-0	200
77	Dan Winship, 55	G	19	6-0	215
78	Richard Chapman, 54	T	19	6-6	218
79	Buddy Edwards, 54	T	21	6-2	230
80	Jack Day, 53	E	22	6-0	195
81	Bill Fisk, 54	E	21	6-0	190
82	R. E. Worthham, 55	E	19	5-11	185
83	R. J. Schroeder, 54	E	20	6-4	186
84	James Heflin, 53	E	21	6-2	188
85	"Chuck" Stephenson, 53	E	18	6-1	180
86	LaDon Cox, 53	E	19	6-0	182
87	Murff Bledsoe, 53	E	19	6-0	176
88	Sammy Ward, 54	E	20	6-0	193
89	Blois Bridges, 54	E	20	6-1	180
90	Lamoine Holland, 55	E	19	6-2	185
91	Tommy Wilson, 54	E	19	6-2	187



...Much **MILDER**

# CHESTERFIELD

LARGEST SELLING CIGARETTE IN AMERICA'S COLLEGES

DRINK  
**Coca-Cola**  
REG. U.S. PAT. OFF.

**Delicious**

**L. S. U. (Offense)**

BY POSITIONS

LE Emberg E9	LT Robichaux T5	LG Beron G7	C Camp C3	RG Lansing G0	RT Fournet T8	RE Tuminello E4
			QB Stevens Q7			
	LH Rachal L3				RH Doggett R3	
			FB Gautreaux F8			

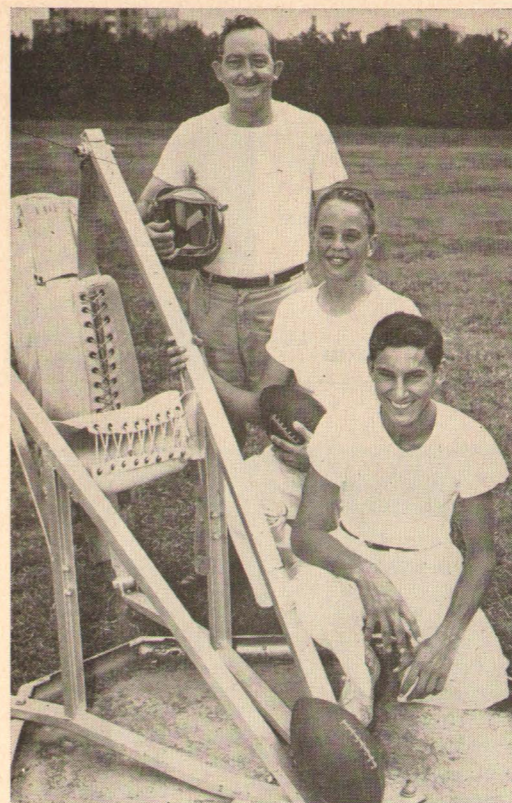
**RICE INSTITUTE (Defense)**

BY POSITIONS

LE Hart 65	LT Schuebel 72	LG Chapman 78	RG Treadway 67	RT Hudson 70	RE Fisk 81
	LLB Rhoden 54			RLB Rucka 55	
LH Kellogg 36					RH Whittaker 42
		S Nesrsta 11			

See line-ups on page 17 for L. S. U. defense and Rice offense

HOUSTON COCA-COLA BOTTLING COMPANY ★ 2800 BISSONNET



J. B. Sorsby, Howard Schaumburg, Louis Loeser

The man who looks after the storing, issuing, and repairing of the Owls' athletic equipment is J. B. Sorsby, an employee of the Institute for over 20 years.  
The student manager of the football team is Norman Moore, who looks after the equipment on the field, assists in detail work in the dressing room, and handles a number of duties.



Trainer Eddie Wojecki

**MEDICAL, TRAINING FACILITIES FOR RICE ATHLETICS**

The finest in medical and training care and the most modern equipment available is provided athletes in all sports at Rice Institute.  
This important phase of an athletic program often is overlooked by spectators, whose chief interest is in the action on the playing field. However, there are a number of persons whose services "behind the scenes" mean a great deal toward having a successful all-round athletic program.  
Dr. Hugh Welch has served as team physician for many years, and with consulting physicians Dr. Jack Brannon and Dr. E. T. Smith the Rice players have the services of an excellent medical staff.  
One of the busiest men on the Rice athletic scene is head athletic trainer Eddie Wojecki. His modern training quarters are where the athletes receive top care for injuries, and where the players get advice on diet and myriad subjects.  
As a tribute to his ability, Wojecki received a signal honor for Rice Institute and himself last summer when he was named head trainer for the American Olympic team that competed in Helsinki, Finland.  
Ablly assisting in the training room are student trainers Louis Loeser, a sophomore, and Howard Schaumburg, former Owl "mascot" and now in high school.

COMPLIMENTS  
OF

**HERRIN TRANSPORTATION COMPANY**

2300 WALKER

FA-5111

**FACTS ABOUT RICE INSTITUTE**

The Rice Institute is privately endowed and non-sectarian.  
The Institute is named for its founder, the late William Marsh Rice of Houston.  
Rice Institute has a limited enrollment with a student body of about 1,500.  
In effect, all Rice students are on scholarships as no tuition is charged those accepted.  
The school's picturesque campus covers 300 acres in Houston's southwest section.  
A major building program has seen several million dollars in new construction on the campus.  
New structures include the Fondren Library, Abercrombie Engineering Laboratory, M. D. Anderson class room building, Wiess Hall, dormitory for men, and the Rice Stadium and Rice Gymnasium.  
The Fondren Library, one of the finest and most modern in the nation, contains about 250,000 volumes.

# QUINBY EMPLOYMENT SERVICE

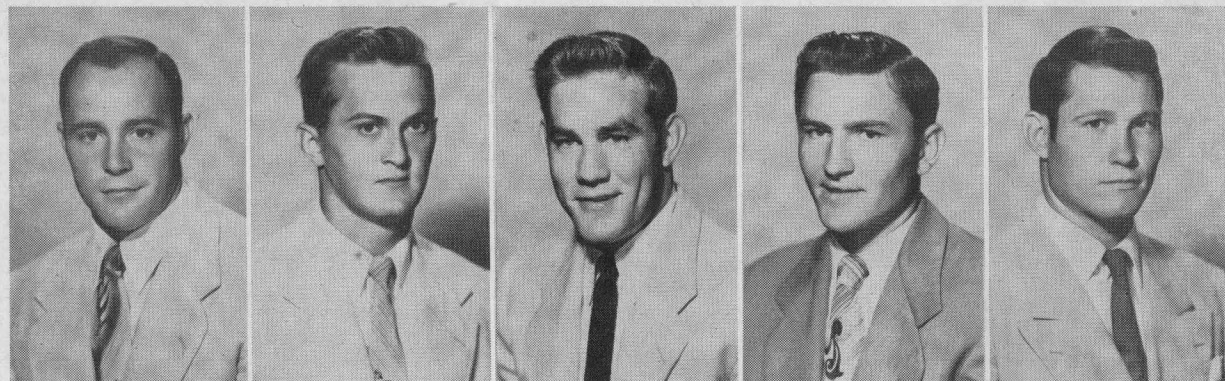
"A Name Worth Remembering"

You can benefit from our many years  
experience in the personnel field  
Executive, Office, Sales, and Technical Personnel

Member National Employment Board, Chamber of Commerce  
and National Association Personnel Consultants

409 Bankers Mortgage Building

Houston 2, Texas



49—Gino Biasatti

50—Ronald Lassiter

54—Don Rhoden (c-c)

55—Leo Rucka

56—Bobby Moore



2020 Main Street

"THE BANK OF CORDIALITY"

Member Federal Deposit Insurance Corporation

BEST WISHES  
TO THE OWLS

**W. S. Bellows Construction Corp.**



59—Jimmy Jax

60—Kenny Paul

61—Gene Little

62—LaMar "Skip" Lee

63—Jerry Fitzpatrick



COMPLETE  
METROPOLITAN  
SERVICE

WITH  
RESIDENTIAL  
CONVENIENCE



*Serving Southwest Houston*

West University Place, Southside Place and Bellaire

AUTOMOBILE TELLER SERVICE

**UNIVERSITY STATE BANK**

KEystone 5574

6135 KIRBY DRIVE at AMHERST

**FIRST STATE BANK**

BELLAIRE, TEXAS

MOhawk 3413

5123 BELLAIRE BOULEVARD

MEMBER FEDERAL DEPOSIT INSURANCE CORPORATION

MAKE YOUR GOAL

**BEFORE** THE KICKOFF

AT

*Cousin's* 4401 FANNIN

OR

**AFTER** THE FINAL GUN

# LOUISIANA



GEN. TROY H. MIDDLETON, President  
Louisiana State University

# STATE



GAYNELL TINSLEY  
Head Football Coach

# UNIVERSITY



T. P. HEARD  
Athletic Director

## FACTS ABOUT LSU

**LOCATION**—Baton Rouge, the capital of Louisiana, an industrial city of approximately 125,000, 84 miles northwest of New Orleans.

**FOUNDED**—LSU, a co-educational, state-maintained institution, was founded in 1860.

**ENROLLMENT**—Approximately 7,000 students (2,000 women).

**COLLEGES**—The University is administered through the Colleges of Agriculture, Arts and Sciences, Chemistry and Physics, Commerce, Education and Engineering, and the Schools of Geology, Journalism, Law, Library, Medicine, Music, Social Welfare and Forestry.

**PRESIDENT**—Troy H. Middleton.  
**ATHLETIC COUNCIL CHAIRMAN**—Dean J. G. Lee, Jr.

**ATHLETIC CONFERENCE**—Southeastern Conference.

**COLORS**—Purple and Gold.

**UNIFORMS**—Gold Jerseys, Pants and Helmets.

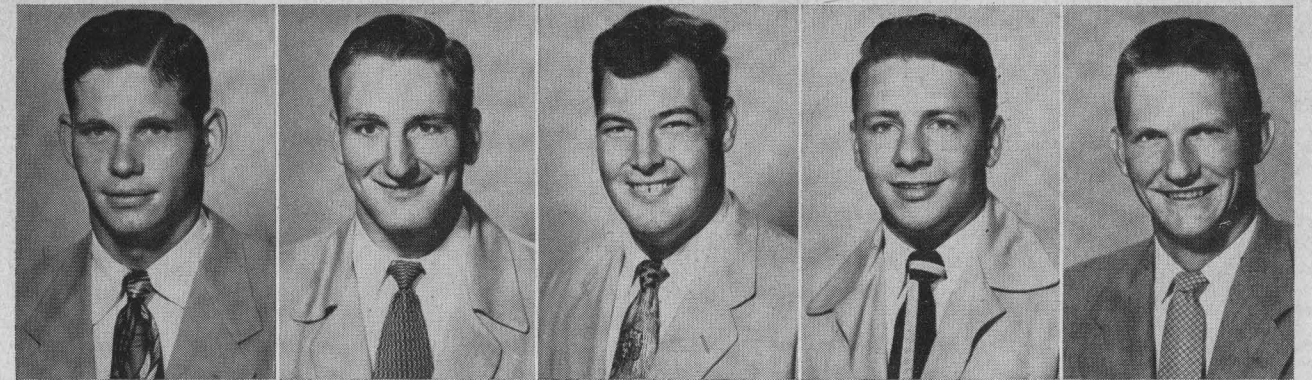
**MASCOT**—"Mike," a 450-pound Bengal tiger.

**NICKNAME OF TEAMS**—Tigers.

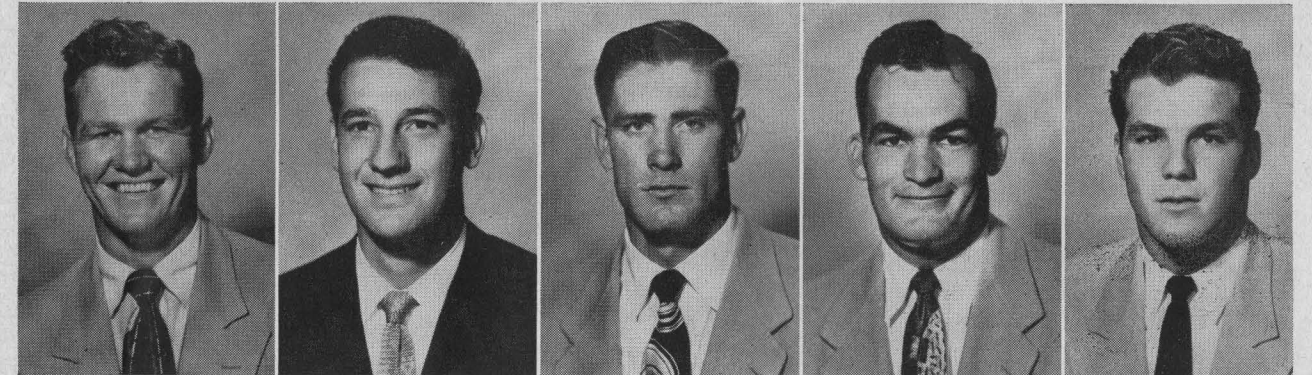
**STADIUM**—Tiger Stadium, with a seating capacity of 46,000.

**BAND**—Tiger Band (120 pieces).

**BAND DIRECTOR**—L. Bruce Jones.

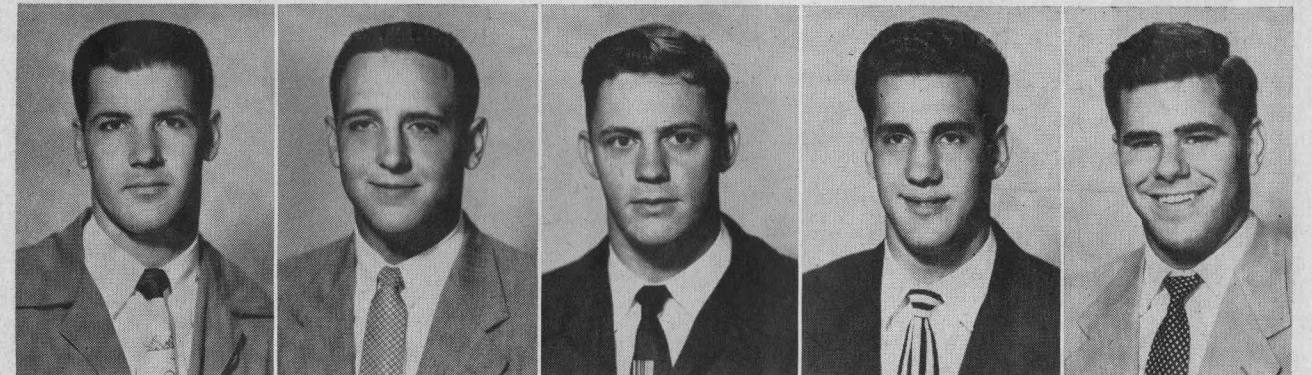


R3—Al Doggett      G6—Bob Lawrence      T4—Jim Sanford      R1—Billy Juenke      T5—Al Robichaux

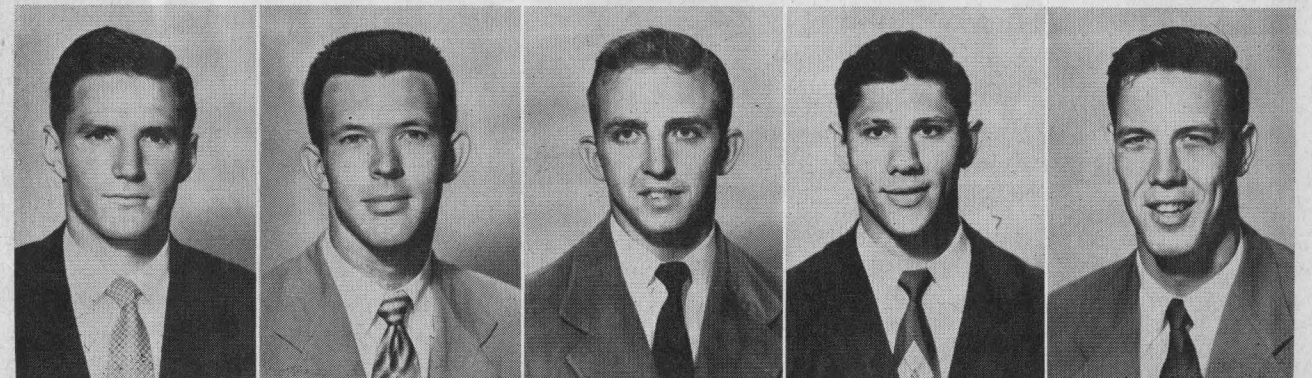


T8—Sid Fournet      G3—Joe Modicut      C3—Ivan Camp      G0—Bill Lansing      T7—Paul Miller

## L. S. U. TIGERS

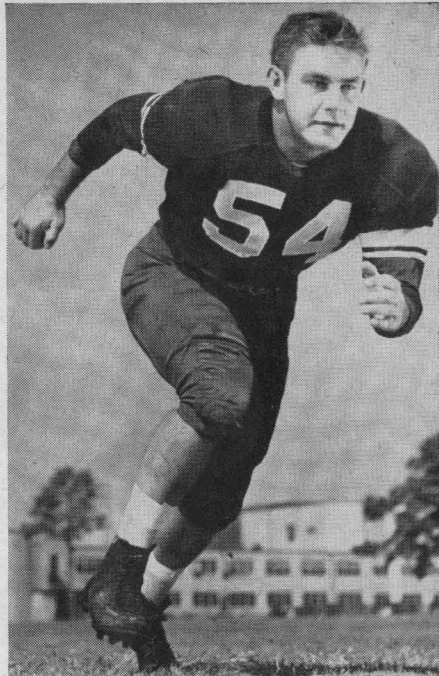


E2—Larry Mobley      C5—Gary Dildy      L3—Willard Rachal      F7—Leroy Labat      R6—Jerry Marchand



Q7—Norman Stevens      Q3—Cliff Stringfield      F3—Charley Oakley      E4—Joe Tuminello      E5—Ralph McLeod

1952 CO-CAPTAINS OF RICE INSTITUTE OWLS



DON RHODEN



BILL CROCKETT

RICE OWLS VARSITY BASKETBALL SCHEDULE

All home games of coach Don Suman's Owls are played on Autry Court in the new Rice Gymnasium, completed in 1951, which seats 6,000 fans for basketball games.

- 11 Dec. (Thur.) Sam Houston State at Huntsville
- 13 Dec. (Sat.) Kansas University at Houston
- 18 Dec. (Thur.) Tulane University at Houston
- 20 Dec. (Sat.) Colorado A.&M. at Houston
- 23 Dec. (Tues.) Stephen F. Austin at Nacogdoches
- 26-30 December—Owls play three games in S.W.C. tournament at Dallas

- 6 Jan. (Tues.) \*Southern Methodist at Houston
- 13 Jan. (Tues.) \*Baylor University at Waco
- 17 Jan. (Sat.) \*Arkansas University at Fayetteville
- 20 Jan. (Tues.) \*Texas Christian at Houston
- 24 Jan. (Sat.) \*Texas A.&M. at Houston
- 5 Feb. (Thur.) Sam Houston State at Houston
- 7 Feb. (Sat.) \*University of Texas at Austin
- 9 Feb. (Mon.) \*Arkansas University at Houston
- 14 Feb. (Sat.) \*Texas A.&M. at College Station
- 17 Feb. (Tues.) \*Baylor University at Houston
- 21 Feb. (Sat.) \*Texas Christian at Fort Worth
- 24 Feb. (Tues.) \*University of Texas at Houston
- 3 Mar. (Tues.) \*Southern Methodist at Dallas

\* Southwest Conference Game.

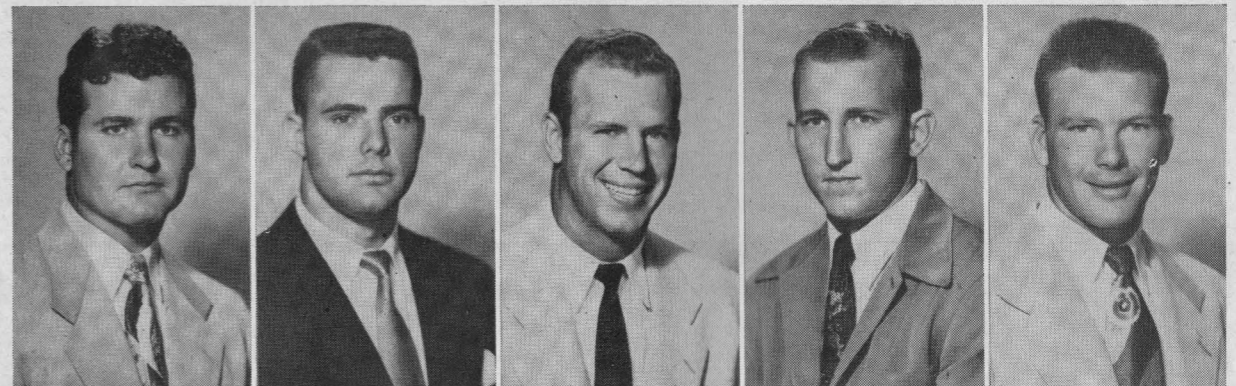
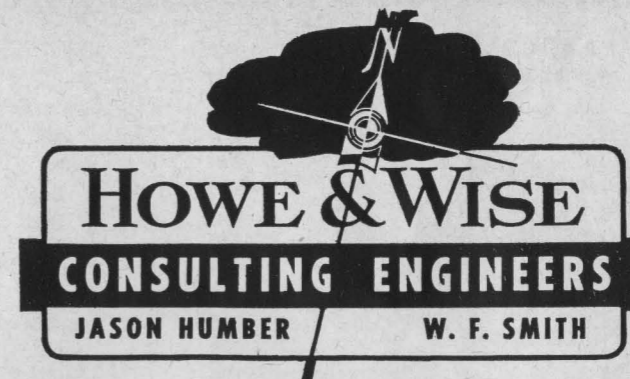
Freshman Basketball Schedule

The 1952-53 Rice freshman basketball team will play six of its 12 games at home as preliminary contests to varsity games at Autry Court in the Rice Gymnasium. Charles Moore is freshman cage coach. Here is the schedule:

- 11 Dec.—Wharton Jr. College at Wharton
- 13 Dec.—Victoria Jr. College at Houston
- 18 Dec.—Allen Academy at Houston
- 20 Dec.—Wharton Jr. College at Houston
- 13 Jan.—Baylor Freshmen at Waco
- 17 Jan.—Allen Academy at Bryan
- 24 Jan.—Texas A. & M. Freshmen at Houston
- 7 Feb.—Texas Freshmen at Austin
- 14 Feb.—Texas A. & M. Freshmen at College Station
- 17 Feb. Baylor Freshmen at Houston
- 20 Feb.—Victoria Jr. College at Victoria
- 24 Feb.—Texas Freshmen at Houston

Jason Humber  
Class of '22

W. F. Smith  
Class of '26



64—Walter Schleyer 65—Dan Hart 66—Dan "Hans" Wagner 67—W. C. Treadway 68—Larry Lundstedt

*Complete Insurance Coverage*

**American General Group**

American General Investment Corporation

American General Life Insurance Company

American General Insurance Company

RUSK BUILDING

HOUSTON, TEXAS

The Rice Athletic Association Would Appreciate Your Patronizing Our Advertisers

## 1952 LOUISIANA STATE UNIVERSITY ROSTER

No.	Player	Pos.	Age	Ht.	Wt.	Class	Hometown
E3	*Nealy, Wendall	LE	20	6-2	180	Soph.	Homer, La.
E5	**McLeod, Ralph	LE	23	6-4	202	Senior	Beaumont, Texas
E7	Smith, Guy	LE	19	6-1	170	Soph.	Marshall, Texas
E9	Emberg, Ronald	LE	23	6-3	200	Fresh.	Milwaukee, Wis.
T1	Martorana, Guy	LT	21	6-0	205	Soph.	Medford, Mass.
T3	Oliver, George	LT	21	6-1	205	Soph.	Little Rock, Ark.
T5	*Robichaux, Al	LT	21	6-4	210	Junior	Hahnville, La.
T7	*Miller, Paul	LT	21	6-1	220	Junior	Baton Rouge, La.
G1	Gassie, Herb	LG	21	6-0	200	Soph.	Baton Rouge, La.
G3	*Modicut, Joe	LG	21	6-1	215	Senior	Baton Rouge, La.
G5	Shaw, Elton	LG	19	6-2	220	Soph.	Kentwood, La.
G7	Beron, Phil	LG	20	5-10	190	Soph.	New Orleans, La.
G9	McAdam, Joe	LG	20	6-2	215	Soph.	New Orleans, La.
C3	*Camp, Ivan	C	20	6-3	195	Soph.	Haynesville, La.
C4	Jones, Larry	C	18	6-0	185	Soph.	Little Rock, Ark.
C5	*Dildy, Gary	C	18	6-2	210	Soph.	Bogalusa, La.
G0	**Lansing, Bill	RG	22	5-11	207	Senior	Magnolia, Miss.
G2	Leake, Sam	RG	21	6-0	200	Junior	Woodville, Miss.
G4	Alford, Andy	RG	22	6-0	190	Soph.	Bogalusa, La.
G6	*Lawrence, Bob	RG	20	6-1	215	Junior	Brilliant, Ala.
G8	Dye, Don	RG	22	6-4	220	Fresh.	Welch, W. Va.
T2	Horn, Frank	RT	21	5-11	205	Junior	Fayette, Ala.

## 1952 RICE INSTITUTE OWLS VARSITY FOOTBALL ROSTER

No.	Name	Pos.	Wt.	Ht.	Age	Class	Exp.	Home Town
11	Horton Nesrsta	LH	149	5' 9"	21	Junior	1 VL	San Antonio
15	Dickie Bob Haddox	RH	162	5' 9"	20	Senior	2 VL	Navasota
16	Bobby Warren	LH	165	5' 7"	20	Soph.	Sqd.	Austin
19	Bob Garbrecht	FB	200	6' 1"	20	Junior	Sqd.	New York City, N.Y.
20	Oree "Buzzy" Bryan	QB	185	6' 1"	20	Soph.	Sqd.	Houston (San Jacinto)
21	Atchley Proctor	QB	170	6' 0"	18	Soph.	FL	DeKalb
22	Billy Ed Daniels	LH	168	6' 0"	21	Senior	1 VL	Kerrville
23	Bill Gaskamp	RH	167	5' 10"	20	Junior	J.C.	Brenham
24	Dan Drake	QB	190	6' 2"	21	Junior	1 VL	Fort Worth
25	Buddy Grantham	QB	175	6' 2"	19	Junior	Sqd.	Grand Prairie
26	Leroy Fenstemaker	QB	195	6' 2"	20	Junior	Sqd.	Llano
31	Morris Stone	RH	167	5' 9"	19	Soph.	FL	Kerrville
35	Bill Frazier	LH	165	5' 10"	21	Senior	1 VL	Pasadena
36	Gordon Kellogg	LH	171	5' 10"	19	Soph.	FL	Baytown
39	Don Costa	LH	194	6' 0"	19	Soph.	FL	Houston (St. Thomas)
40	Tommy Lynch	FB	182	6' 0"	20	Soph.	FL	Houston (San Jacinto)
42	Don Whittaker	FB	192	6' 1"	19	Junior	Sqd.	Dallas
43	Carl Johnson	RH	179	5' 11"	19	Junior	Sqd.	Houston (San Jacinto)
45	David "Kosse" Johnson	FB	176	6' 0"	20	Junior	1 VL	Baytown
47	Dicky Moegle	LH	167	6' 0"	18	Soph.	FL	Taylor
49	Gino Biasatti	FB	185	5' 10"	20	Soph.	Sqd.	Dallas
50	Ronald Lassiter	C	202	6' 2"	20	Soph.	FL	Houston (San Jacinto)
54	Don Rhoden (c-c)	C	200	5' 11"	19	Senior	2 VL	Kerrville
55	Leo Rucka	C	204	6' 2"	21	Junior	1 VL	Crosby
56	Bobby Moore	C	205	6' 2"	22	Senior	2 VL	Amarillo
59	Jimmy Jax	C	200	6' 2"	19	Soph.	FL	Houston (Lamar)
60	Kenny Paul	RG	195	5' 11"	19	Soph.	FL	Houston (Lamar)
61	Gene Little	LG	205	6' 0"	23	Senior	2 VL	Corpus Christi

**Always A Winning Combination!**



DRILLING STABILIZERS



KINNEAR COMBINATION BITS



BURRIS KEY SEAT WIPERS

AUTO FLEX-ECCENTRIC GUIDE CASING MILL



**A-1 BIT & TOOL COMPANY**



CHECK VALVES



WATER CONTROL VALVE



JET BITS



WIRE LINE CORE BARREL



SIDE CORE WALL BARRELS



SURE SHOT DEVIATION RECORDING INSTRUMENT



MILLING TOOLS

**9000 ALMEDA ROAD**

**HOUSTON TEXAS**

T4	*Sanford, Jim	RT	21	6-1	225	Senior	Covington, La.
T6	Flettrich, Leon	RT	19	5-11	200	Fresh.	New Orleans, La.
T8	*Fournet, Sid	RT	20	5-11	227	Soph.	Bogalusa, La.
E0	Murphy, Sammy	RE	21	6-4	215	Junior	Baker, La.
E2	Mobley, Larry	RE	20	6-0	185	Soph.	Baton Rouge, La.
E4	Tuminello, Joe	RE	19	6-1	185	Fresh.	Brookhaven, Miss.
E6	Mitchell, Jim	RE	20	6-0	190	Soph.	Baton Rouge, La.
E8	*Guglielmo, Al	RE	19	6-3	210	Junior	Lutcher, La.
Q3	*Stringfield, Cliff	QB	20	6-0	185	Soph.	Bogalusa, La.
Q5	Shepherd, Tommy	QB	23	6-2	195	Fresh.	New Orleans, La.
Q7	**Stevens, Norman	QB	21	6-0	180	Senior	Picayune, Miss.
L2	Brancato, George	LHB	21	5-9	165	Junior	Brooklyn, N. Y.
L3	Rachal, Willard	LHB	20	5-9	170	Junior	Shreveport, La.
L4	Nicolo, Sal	LHB	21	5-8	165	Soph.	Saugus, Mass.
L5	*Davis, Grady	LHB	20	6-0	190	Soph.	Haynesville, La.
L6	Johns, Levi	LHB	19	5-10	175	Fresh.	Rayville, La.
R1	Juenke, Billy	RHB	21	5-8	165	Junior	Houma, La.
R2	Simmons, Ray	RHB	19	5-11	175	Soph.	El Dorado, Ark.
R3	*Doggett, Al	RHB	20	5-11	175	Soph.	Homer, La.
R4	*Prescott, Dickie	RHB	18	5-11	185	Soph.	St. Francisville, La.
R5	O'Callaghan, Joe	RHB	22	5-11	190	Junior	Somerville, Mass.
R6	Marchand, Jerry	RHB	21	5-8	185	Junior	Baton Rouge, La.
F3	*Oakley, Charley	FB	21	5-10	165	Junior	Lake Charles, La.
F5	Huddleston, Danny	FB	20	5-10	175	Soph.	Shreveport, La.
F7	*Labat, Leroy	FB	22	5-10	190	Senior	LaPlace, La.
F8	Gautreaux, Russ	FB	20	5-11	170	Soph.	Baton Rouge, La.

\*—L.S.U. Varsity Letters

62	LaMar "Skip" Lee	RG	197	6' 0"	20	Junior	Sqd.	Huntsville
63	Jerry Fitzpatrick	C	202	6' 1"	20	Soph.	FL	Harlingen
64	Walter Schleyer	RG	190	5' 11"	20	Junior	Sqd.	San Angelo
65	Dan Hart	RG	195	5' 10"	20	Junior	1 VL	Houston (Milby)
66	Dan "Hans" Wagner	RG	205	6' 1"	21	Senior	1 VL	Schulenberg
67	W. C. Treadway	LG	200	6' 1"	20	Junior	1 VL	Houston (San Jacinto)
68	Larry Lundstedt	LG	188	5' 11"	18	Soph.	FL	Austin
69	James Timmons	LG	198	6' 1"	22	Senior	1 VL	Sweetwater
70	John Hudson	LT	212	6' 0"	19	Junior	1 VL	Center
71	Bill Crockett (c-c)	RT	206	6' 2"	20	Senior	2 VL	Bonham
72	Max Schuebel	LT	210	6' 1"	20	Junior	1 VL	Houston (Reagan)
73	LaVon Cox	RT	230	6' 0"	19	Soph.	FL	Galena Park
74	Robert Cashion	RT	217	6' 1"	20	Soph.	FL	Mexia
75	Layton Golemon	LT	210	6' 4"	18	Soph.	FL	Kerrville
76	James Ellis	LT	200	6' 0"	19	Soph.	FL	West Columbia
77	Dan Winship	LG	215	6' 0"	19	Soph.	Sqd.	Houston (Reagan)
78	Richard Chapman	LT	218	6' 6"	19	Junior	1 VL	Waxahachie
79	Buddy Edwards	RT	230	6' 2"	21	Junior	Sqd.	Texarkana, Ark.
80	Jack Day	RE	195	6' 0"	22	Senior	2 VL	Galena Park
81	Bill Fisk	LE	190	6' 0"	21	Junior	1 VL	Irving
82	R. E. Wortham	RE	185	5' 11"	19	Soph.	FL	Klein
83	R. J. Schroeder	LE	186	6' 4"	20	Junior	1 VL	East Bernard
84	James Heflin	LE	188	6' 2"	21	Soph.	Sqd.	Mart
85	"Chuck" Stephenson	LE	180	6' 1"	18	Soph.	FL	Bloomington
86	LaDon Cox	RE	182	6' 0"	19	Soph.	FL	Galena Park
87	Murff Bledsoe	RE	176	6' 0"	19	Soph.	FL	Pearsall
88	Sammy Ward	LE	193	6' 0"	20	Junior	Sqd.	Laredo
89	Blois Bridges	LE	180	6' 1"	20	Junior	Sqd.	Grand Prairie
90	Lamoine Holland	RE	185	6' 2"	19	Soph.	FL	San Antonio
91	Tommy Wilson	RE	187	6' 2"	19	Junior	J.C.	Graham



**AT LUNCH OR DINNER**

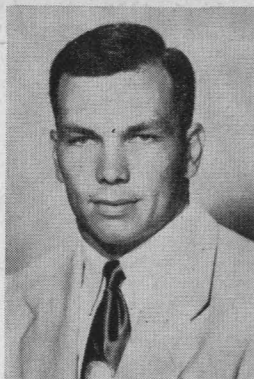
You can always enjoy a delicious meal in the Warwick's Famous Crystal Dining Room

A PLEASURE TO SERVE YOU

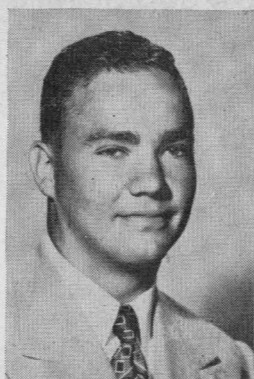


R. T. CULLATHER, Manager

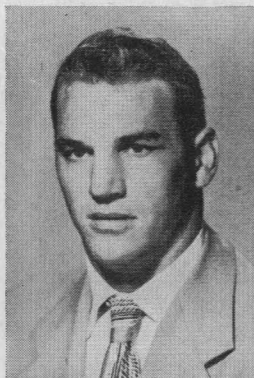
**WARWICK HOTEL**  
AND APARTMENTS  
Houston 1, Texas



69—James Timmons



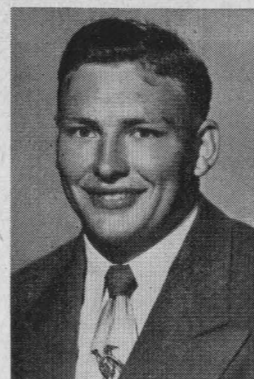
70—John Hudson



71—Bill Crockett (c-c)



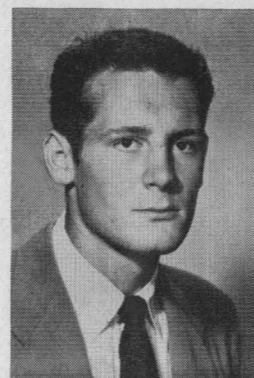
72—Max Schuebel



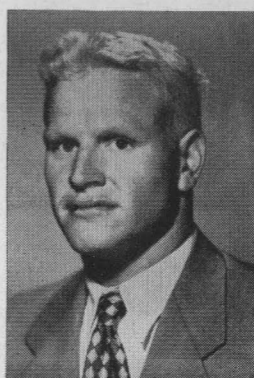
73—LaVon Cox



74—Robert Cashion



75—Layton Golemon



76—James Ellis



FANNIN AT TEXAS

912 MAIN STREET

*Salutes the Rice Owls '52*

"Stay Dry When the Weather is Wet"

Light weight, compact Plastic Spectator

**PONCHO WITH HOOD**

Fits into your purse or pocket.

**1.25**

ORDER BY MAIL

PHONE PR-2231

Oshman's Athletic Dept.



Mmmmm... **CAMELLIA** Ice Cream!

Enjoy catering-quality Camellia Ice Cream often . . . it's a great hit for any occasion . . . after-the-game snacks . . . mealtime dessert or party treat. Buy the large family-size carton . . . or individual cube shaped cartons for personalized flavor selection.



**CAMELLIA**  
ice cream

For the name and address of your nearest dealer, call JUstin 0581.

Drinks in Stadium are cooled with  
Texas Ice "Sized Ice"

**TEXAS ICE & FUEL  
COMPANY**

6301 Harrisburg

Wayside 2154

The Rice Athletic Association Would Appreciate Your Patronizing Our Advertisers

☆ *The Southwest's  
Finest . . .  
and reasonable, too!*

**WELDON** *Cafeteria*  
4916 South Main

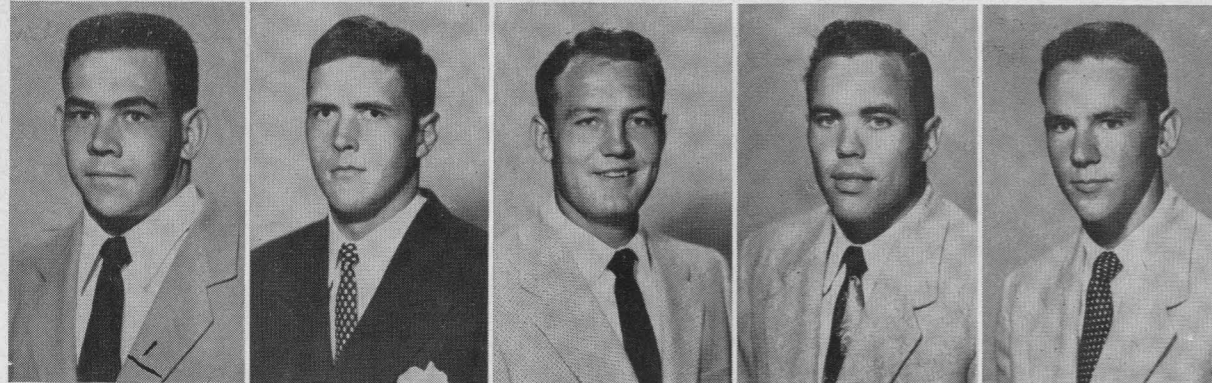
- Open Daily—11:00 a.m. through 8:30 p.m.
- Two Free Parking Lots Adjoining

**South End Building Materials Co.**

READY MIX CONCRETE

SAND — GRAVEL — CEMENT

South Houston Plant 5102 Galveston Road Phone MI-3328	Deer Park Plant Deer Park, Texas Phone GR-9-2251	Kirby Drive Plant 4830 Kirby Drive Phone LY-9131
---	--	--



77—Dan Winship    78—Richard Chapman    79—Buddy Edwards    80—Jack Day    81—Bill Fisk



**WITHIN REACH!**

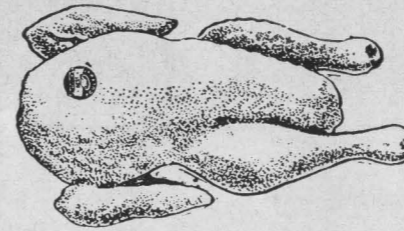
the **RIGHT** way to  
plan a play...  
or a trip

A coach designs every play to go all the way . . . the same as today's bus traveler does when he chooses **CONTINENTAL TRAILWAYS** thru bus service between many of the metropolitan centers of America. Whether your trip be to the next town, or across the nation, make your first choice Continental!

And for weekend football trips, charter a big Continental Silverliner and follow your team wherever they play.

**CONTINENTAL TRAILWAYS**

"YOUR HIGHWAY HOST FROM COAST TO COAST"

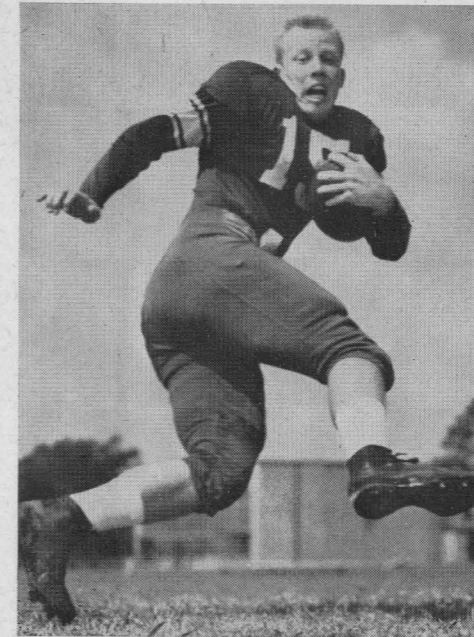


Frederick's Best Tagged Fryers  
FRESH, PLUMP, CLEAN  
They Sell Themselves

**FREDERICK POULTRY & EGG CO.**

Vernon C. Fredericks, Sr., Pres.-Mgr.  
1817 CENTER • PReston 5195

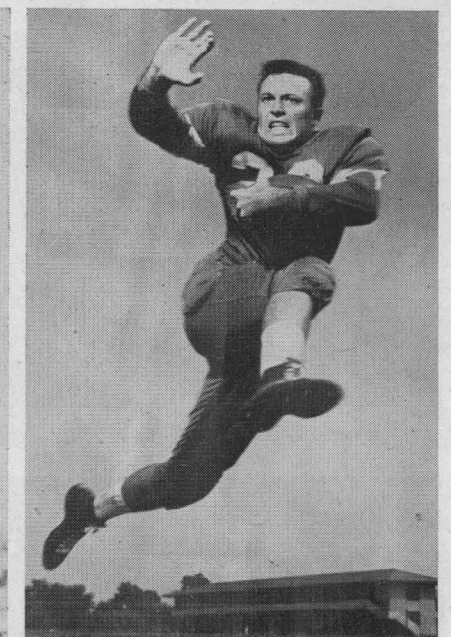
**THREE SENIOR OWL BACKS**



Dickie Bob Haddox



Bill Frazier



Billy Ed Daniels

At the games it's . . . .

**JASMINE FRANKS AND  
HAM SANDWICHES**

(Always Government Inspected)

**HOUSTON PACKING COMPANY • 3301 NAVIGATION • PReston 2361**

*The Best FRIED CHICKEN in Town . . . .*

Famous throughout the Southwest for its tenderness and flavor. Fast service, low prices. Box orders to take out at no extra cost.

**6441 SOUTH MAIN in HOUSTON**



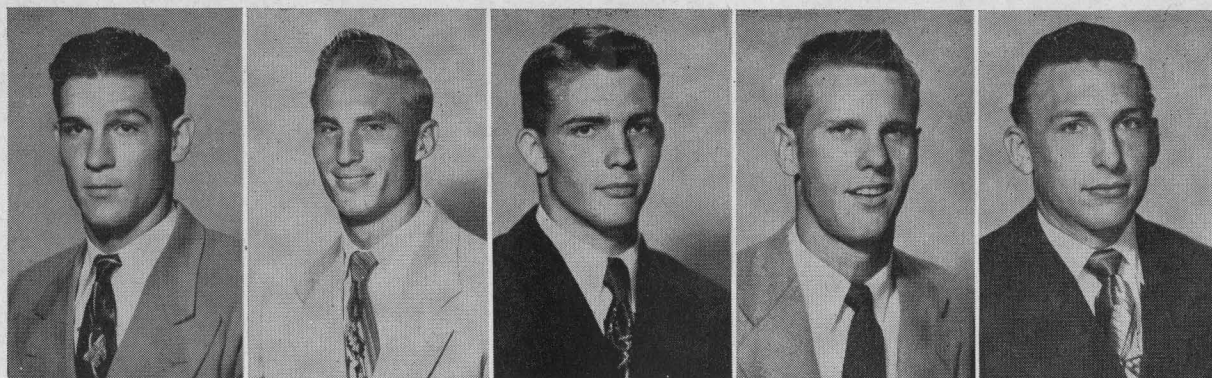
The Rice Athletic Association Would Appreciate Your Patronizing Our Advertisers

# PEIDIEN IRON & STEEL CO.

ESTABLISHED 1890

WHOLESALE

HOUSTON, TEXAS



82—R. E. Wortham

83—R. J. Schroeder

84—James Heflin

85 "Chuck" Stephenson

86—LaDon Cox

明宮

Listen to the **SCORES** right after the game on **KPRC** brought to you by the

**MING PALACE**

And if you want to make a score, **DAD**, treat the family to **GOOD** Chinese and American **FOOD** tonight at the

**MING PALACE**

*The House of Good Food*

2015 W. GRAY

for . . .

- Office Forms • Folders
- Booklets • Color Printing
- Letterpress and Offset
- One-Time Carbon Forms
- Continuous • Fanfold
- Register Forms

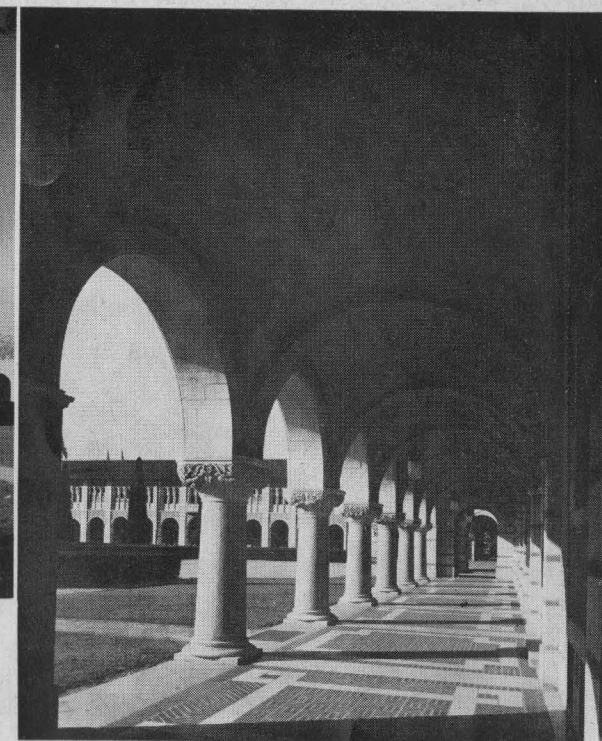


THE REIN CO.

Victor 2611



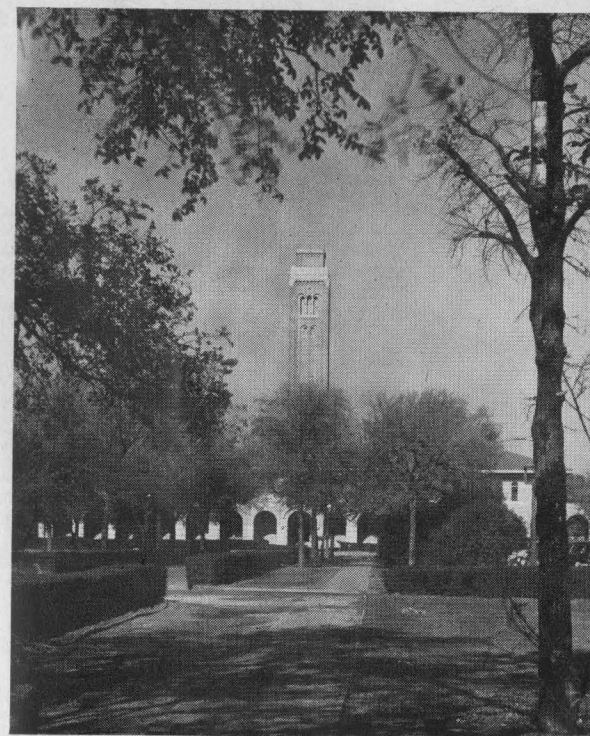
Fondren Library



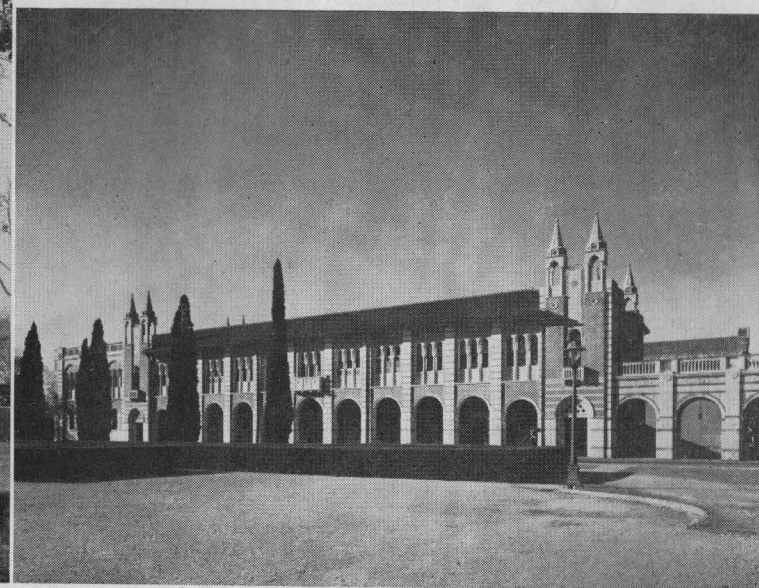
Cloisters of Lovett Hall

## Campus Scenes

OF THE RICE INSTITUTE



Engineering Building and Campanile



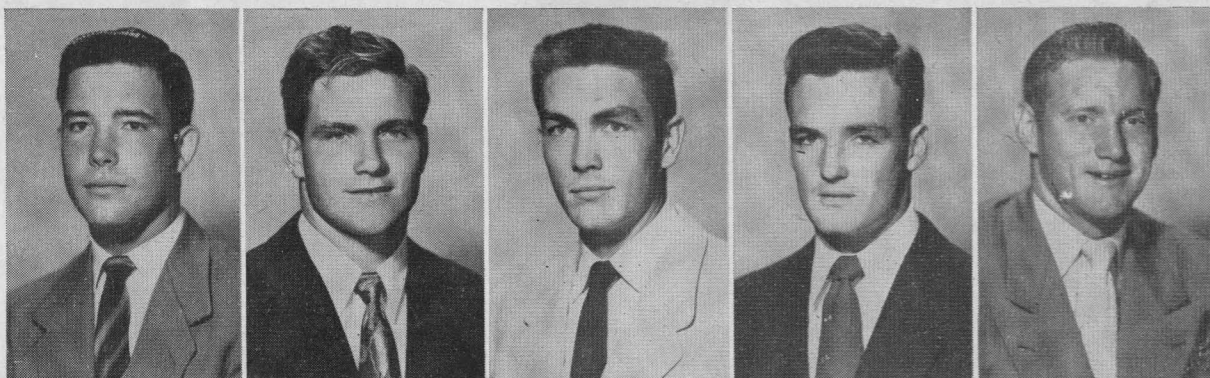
Physics Building

The "Fresh Up"  
Family Drink!



*You like it...  
it likes you*

BUY A CASE TODAY!



87—Murff Bledsoe

88—Sammy Ward

89—Blois Bridges

90—Lamoine Holland

91—Tommy Wilson

CHAMPIONSHIP AND BOWL RECORD OF THE RICE OWLS

Rice Institute has fielded a football team for forty years, and in that time the Owls have provided many thrills for grid fans of the Southwest and the nation.

The Owls have played from coast to coast with intersectional competition against teams representing some of the country's finest schools.

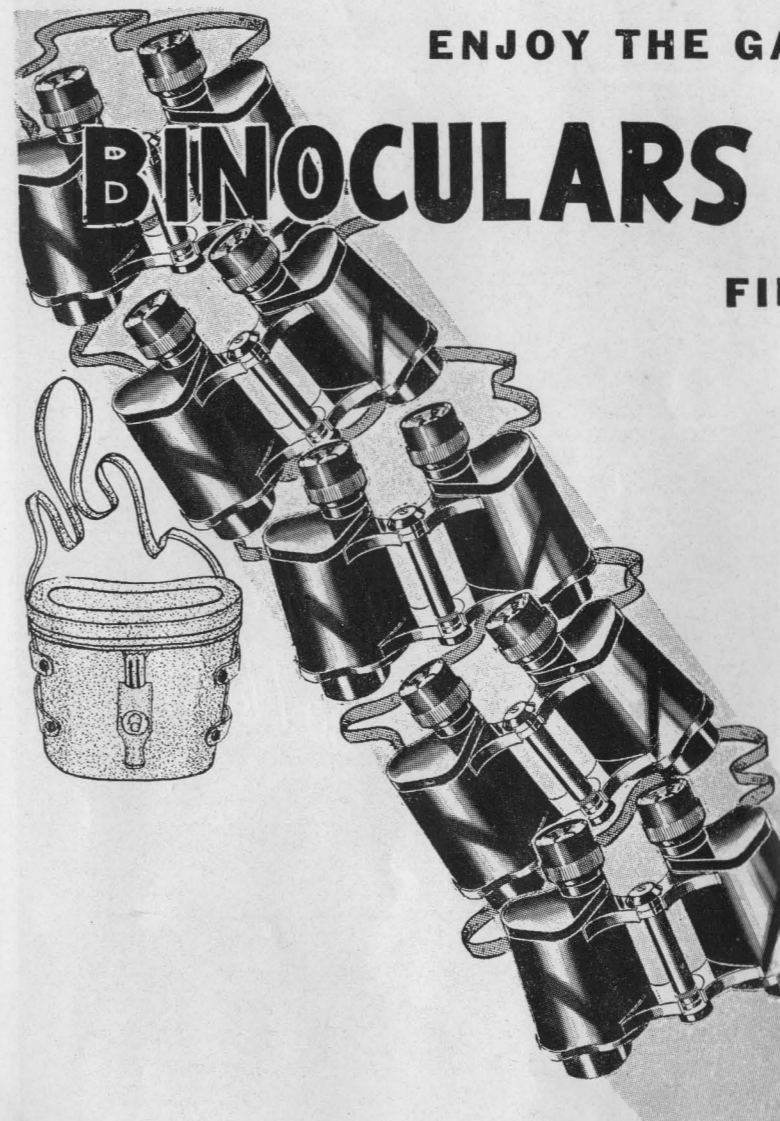
Many honors have come the way of Rice teams in the past. The Owls have won the Southwest Conference championship on three occasions—in 1934, 1937, and 1949—and shared the title with Arkansas in 1946.

Rice has been represented in three major bowl games, and the Owls were victorious on each occasion. The 1937 team beat Colorado 28-14 in the Cotton Bowl classic, the 1946 club stopped Tennessee 8-0 in the Orange Bowl, and the 1949 team trimmed the North Carolina Tarheels 27-13 in the Cotton Bowl.

In addition, many other honors have come the way of Rice players and coaches. Several players have been named to All-American teams, and a host of Owls have been accorded All-Southwest Conference honors.

Special honors of last year saw end Bill Howton selected on many All-American teams and invited to play for the College All-Stars, while along with teammate end Sonny McCurry he played under Rice coach Jess Neely in the East-West Shrine game for the benefit of crippled children last December.

ENJOY THE GAME MORE WITH



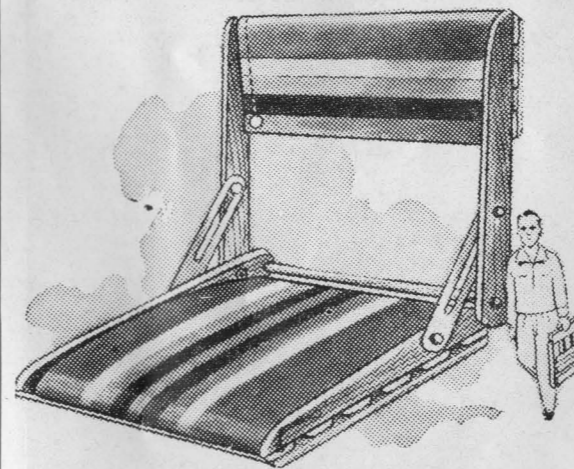
**BINOCULARS**

*And*

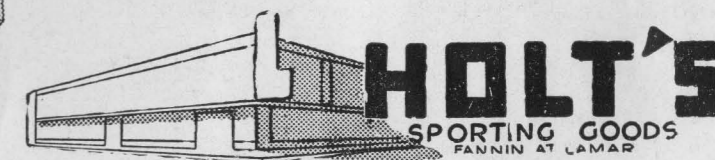
**FIELD GLASSES**

Holt's carry a complete line of fine nationally known binoculars and field glasses, all sizes, all prices.

Come in our store at your first opportunity. Visit our camera shop and let us show you these fine glasses. . . .



"Tak-Along" stadium seat and backrest, fine hardwood construction, kapok seat and back, durable fancy striped canvas, hours of comfort.



"I'd walk a mile for a  
**CAMEL**"



*So Mild—  
So Flavorful!*

