

The TEXAS U. Game

RICE CAMPUS ☆ OCTOBER 25, 1952

OFFICIAL PROGRAM — TWENTY FIVE CENTS



DOROTHY COLLINS,
"The Sweetheart of Lucky Strike,"
says:

Be Happy-
GO LUCKY!

**LUCKIES
TASTE
BETTER!**



L.S./M.F.T.-Lucky Strike Means Fine Tobacco

COPR. THE AMERICAN TOBACCO COMPANY

**ONLY ONE
CAN BE
BEST**

*Taste Tru-Ade
and judge for yourself*



THE
Natural
SOFT DRINK

SOUTH TEXAS NATIONAL BANK

Progressive Banking Service Since 1886

213 MAIN STREET • HOUSTON, TEXAS
MEMBER FEDERAL DEPOSIT INSURANCE CORPORATION



Satisfy Your Hunger at



6515 SOUTH MAIN
OPPOSITE RICE INSTITUTE
Bill Williams
GOOD FOOD TO FIT YOUR APPETITE AND YOUR POCKETBOOK

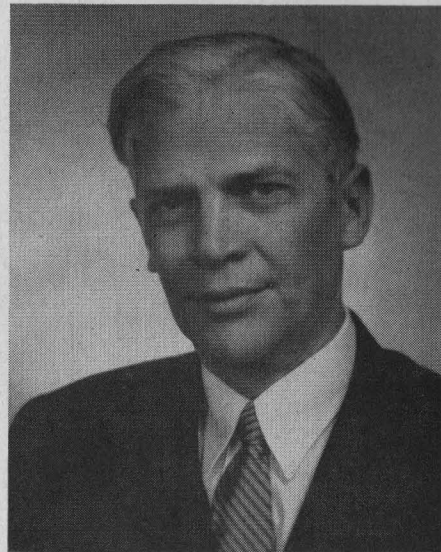
Represented for National Advertising by DON SPENCER COMPANY, INC., 271 Madison Ave., New York 16, N.Y.

BOARD OF GOVERNORS OF THE RICE INSTITUTE

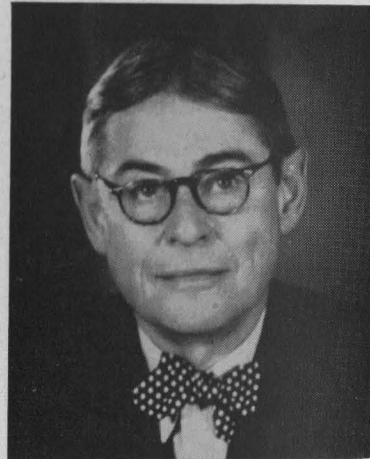
TRUSTEES



GUS S. WORTHAM



GEORGE R. BROWN
Chairman



LAMAR FLEMING, JR.



WILLIAM A. KIRKLAND



J. NEWTON RAYZOR



DR. FREDERICK R. LUMMIS



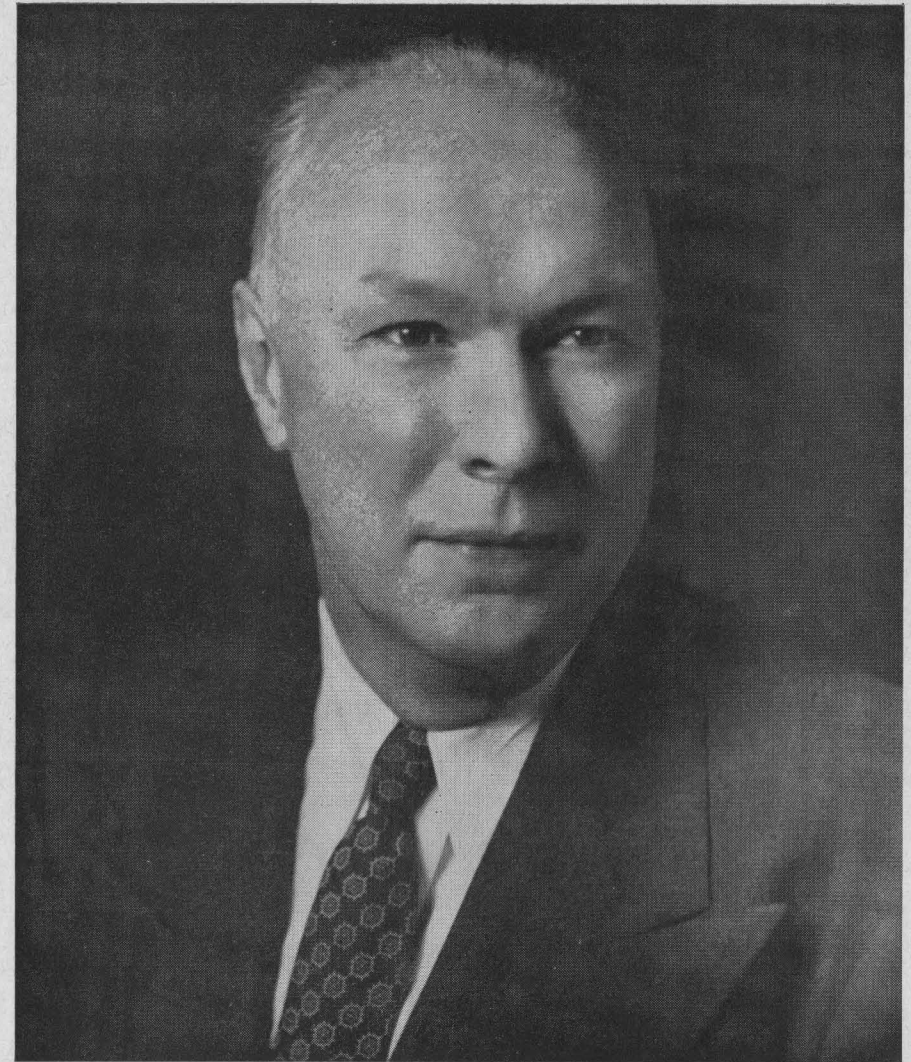
JOHN S. IVY

TERM MEMBERS

HERBERT ALLEN
ROBERT P. DOHERTY

FRANCIS T. FENDLEY
H. MALCOLM LOVETT

ROBERT H. RAY
HARMON WHITTINGTON



DR. WILLIAM V. HOUSTON
President, The Rice Institute

Just forty years ago the first class of freshmen entered the Rice Institute. That first freshman class organized a football team and played a schedule involving some satisfying victories along with some overwhelming, if not spectacular, defeats.

Today the Rice Institute welcomes you, its guests, to a stadium which bears little resemblance to the ball park in which our first games were played. Our physical facilities have grown with the city of Houston and because of the interest and help of its citizens.

You are all invited to spend a little time looking around the rest of our campus. Some of you may not have seen the Fondren Library, Wiess Hall, or the Abercrombie Laboratory. We hope you will visit them.

In particular, we hope you enjoy the game you have come to see. May you not be disappointed in its outcome more than half the time.

WILLIAM V. HOUSTON

THE RICE INSTITUTE ATHLETIC COACHING STAFF



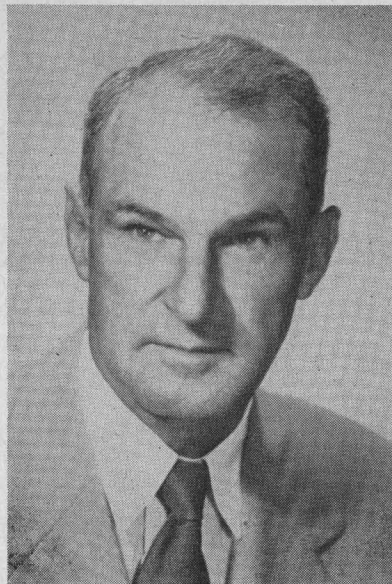
JOE DAVIS
Line Coach

CECIL GRIGG
Backfield Coach

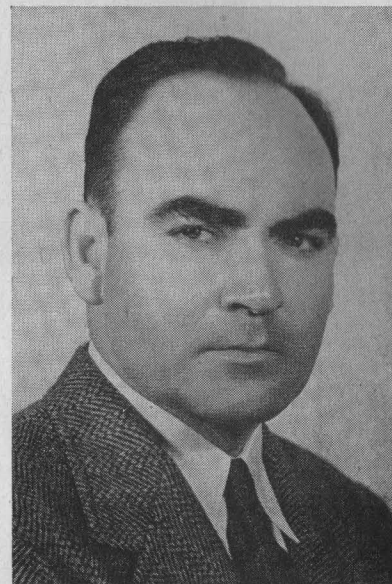
A. M. BALE
End Coach

DELL MORGAN
Asst. Coach

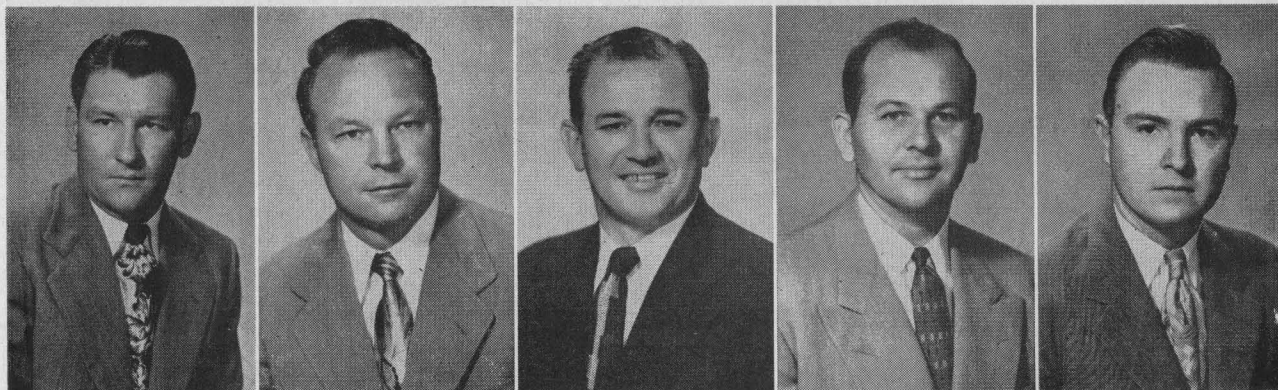
CHARLES MOORE
Freshman Football Coach
Freshman Basketball Coach



JESS NEELY
Head Football Coach
Athletic Director



EMMETT BRUNSON
Track Coach
Bus. Mgr. of Athletics



HAROLD STOCKBRIDGE
Asst. Coach

DON SUMAN
Basketball Coach

EDDIE WOJECKI
Head Trainer

CARROLL MARTIN
Office Manager

BILL WHITMORE
Sports News Director

OFFICIAL WATCH FOR THIS GAME



Longines



The World's Most Honored Watch

ACCEPTED AS OFFICIAL WATCH
FOR TIMING
CHAMPIONSHIP SPORTS EVENTS
IN ALL FIELDS ALL OVER THE WORLD



*Product of
Longines-Wittnauer Watch Company*

As constructors of the Rice Stadium, we take great satisfaction from the contests played here—not from the final score, but from the knowledge that on this field there is rivalry without rancor, defeat without dishonor, and victory without tyranny.

In this great game look not for the shoddy, the dishonest, the shirker and the fraud. for here he cannot survive.



BROWN-BILT

Brown & Root, Inc.

Engineers — Constructors

HOUSTON

THE RICE INSTITUTE ATHLETIC COACHING STAFF



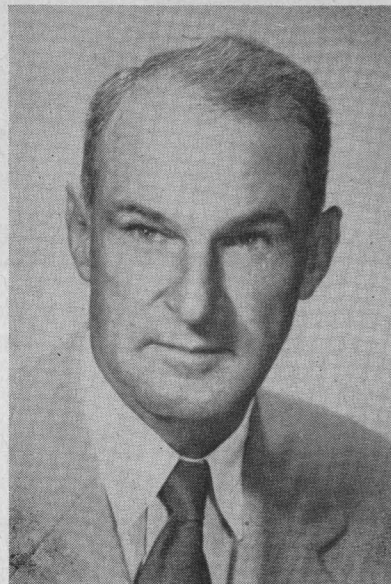
JOE DAVIS
Line Coach

CECIL GRIGG
Backfield Coach

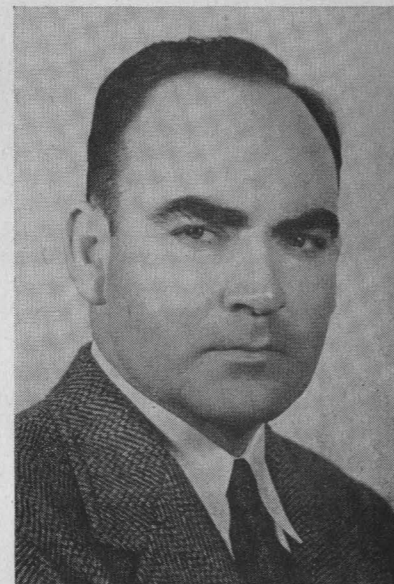
A. M. BALE
End Coach

DELL MORGAN
Asst. Coach

CHARLES MOORE
Freshman Football Coach
Freshman Basketball Coach



JESS NEELY
Head Football Coach
Athletic Director



EMMETT BRUNSON
Track Coach
Bus. Mgr. of Athletics



HAROLD STOCKBRIDGE
Asst. Coach

DON SUMAN
Basketball Coach

EDDIE WOJECKI
Head Trainer

CARROLL MARTIN
Office Manager

BILL WHITMORE
Sports News Director

OFFICIAL WATCH FOR THIS GAME

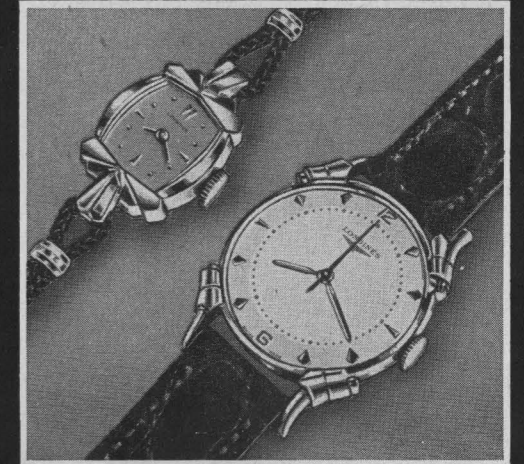


Longines



The World's Most Honored Watch

ACCEPTED AS OFFICIAL WATCH
FOR TIMING
CHAMPIONSHIP SPORTS EVENTS
IN ALL FIELDS ALL OVER THE WORLD



*Product of
Longines-Wittnauer Watch Company*

As constructors of the Rice Stadium, we take great satisfaction from the contests played here—not from the final score, but from the knowledge that on this field there is rivalry without rancor, defeat without dishonor, and victory without tyranny.

In this great game look not for the shoddy, the dishonest, the shirker and the fraud. for here he cannot survive.



BROWN-BILT

Brown & Root, Inc.

Engineers — Constructors

HOUSTON

TOUCHDOWN!



Touchdown or take off with a Beech and you'll know you've got a champion on your hands. In Beech's Executive Transport and Bonanza models you'll find the World's finest airplanes designed specifically to meet the requirements of leading executives who appreciate the importance of air travel in modern industry.

To match these unexcelled planes, J. D. Reed has built a superior sales and service organization in keeping with the high standards demanded by those who accept only the best.

J.D. REED

CO. Inc.

Beechcraft

DISTRIBUTOR

HOUSTON
Municipal Airport

TODAY'S GAME

BY BILL WHITMORE
Rice Sports News Director

Rebounding Texas challenges grimly determined Rice this afternoon in a continuation of one of the great football rivalries of the Southwest.

This marks the 39th meeting of the Owls and Longhorns on the gridiron. In the all-time series Texas has won 24 times to 14 for Rice, but most of the edge was gained in the early and formative years for the then young Houston school which won only twice—in 1917 and 1924—in the first fifteen years of the series which began in 1915. The record is "even Steven" at ten victories apiece in the past two decades. And in a series covering nearly four decades there has yet to be a tie.

The Longhorns under the tutelage of Ed Price go into this contest a favorite on the basis of a 44-7 thrashing handed the Arkansas Razorbacks last Saturday, while the Owls were dropping a hard fought 21-14 decision to an impressive S.M.U. club. But the Rice team, a better one than the perhaps deceptive 1-3 record so far with a "suicide schedule" would indicate, considers this a "must" game and will be making an all-out effort that could pay off in an upset victory. A triumph today would put the Owls right back in

the running for the conference title, and especially would they like to beat Rice's oldest football rival.

Encouraging signs to Rice fans in the narrow loss to S.M.U. were the passing of quarterback Dan Drake who completed 9 of 13 attempts, the running of Bill Frazier (who had a 71 yard touchdown scamper), Morris Stone, and Bob Garbrecht, and the pass catching of Jack Day. Garbrecht, however, and senior halfback Billy Ed Daniels are on the doubtful list for this game because of injuries.

The rugged Owl defensive line led by Don Rhoden, Richard Chapman, John Hudson, Leo Rucka, and others gets another big test against the aggressive Texas forwards sparked by guard Harley Sewell. The Longhorn offense boasts of talented performers in quarterback on the Split T aptly named "T" Jones, the leading ground gainer in the Southwest Conference in Richard Ochoa, and scoring star halfback Gib Dawson, who made four TD's in last week's rout of Arkansas.

It is a big order, but the Owl's hope to go for victory behind the blocking of such fine offensive linemen as co-captain Bill Crockett, Gene Little, Bobby Moore, "Skip" Lee, and others.

Halftime activities should be quite colorful at this first day game of the season at Rice Stadium, with the Rice and Texas bands to perform.

W. Cecil Sisson Mortgage Company

Complete Financial Service

Roy Bean, Loan Officer

402 Rusk Building

Represented for National Advertising by DON SPENCER COMPANY, INC., 271 Madison Ave., New York 16, N.Y.

Spring Air

"Lastic Foam"

MATTRESSES and BOX SPRINGS

America's Finest Bedding Equipment

PARKER BEDDING COMPANY

FREDERICK PARKER

HOUSTON

JOEL PARKER



11—Horton Nesrsta 15—Dickie Bob Haddox 16—Bobby Warren 19—Bob Garbrecht 20—Oree "Buzzy" Bryan



Welcome to
*** FOOTBALL HEADQUARTERS**

*That means:

welcome under
the Humble sign in
your neighborhood.



You're always welcome under the Humble sign—every day in the year. But right now you'll find your neighborhood Humble dealer's station gaily decorated with Southwest Conference school colors in honor of the season, and provided with timely information about Humble's football broadcasts.

Come the weekends, your neighbor under the Humble sign invites you to be his guest at Humble's broadcasts of the games you can't attend. Enjoy this neighborly hospitality right in your own living room—tune in the Southwest Conference game, or games, of your choice.

When you drive to a game (and plan to see as much football as you can; there's no substitute for the glamor and excitement you find only at the stadium) stop for service at the Humble signs along your route . . . Welcome to Football Headquarters!

HUMBLE OIL & REFINING CO.

OFFICIAL SIGNALS ADOPTED BY NATIONAL COLLEGIATE ATHLETIC ASSOCIATION



1. OFFSIDE



2. ILLEGAL POSITION OR PROCEDURE



3. ILLEGAL MOTION OR SHIFT



4. DELAY OF GAME



5. PERSONAL FOUL



6. ROUGHNESS AND PILING ON



7. CLIPPING



8. ROUGHING THE KICKER



9. UNSPORTSMANLIKE CONDUCT



10. DEFENSIVE HOLDING



11. ILLEGAL USE OF HANDS AND ARMS



12. INTENTIONAL GROUNDING



13. ILLEGALLY PASSING OR HANDING BALL FORWARD



14. FORWARD PASS OR KICK CATCHING INTERFERENCE



15. INELIGIBLE RECEIVER DOWN FIELD ON PASS

For the best signal in TV...

see



BLACK-DAYLITE TELEVISION



Huge screen, beautiful compact cabinet and on-the-spot picture realism—it's G-E Model 21T4. Go into a huddle with your dealer—fast. Ask him to demonstrate the features.

When you can't get to the game, the next best thing is G-E Model 21T4!

GENERAL ELECTRIC SUPPLY COMPANY
1312 LIVE OAK HOUSTON, TEXAS



22. TIME-OUT



21. SAFETY



20. TOUCHDOWN OR FIELD GOAL



19. BALL DEAD; IF HAND IS MOVED FROM SIDE TO SIDE: TOUCHBACK



18. CRAWLING, HELPING THE RUNNER OR INTERLOCKED INTERFERENCE



17. INCOMPLETE FORWARD PASS, PENALTY DECLINED, NO PLAY OR NO SCORE



16. BALL ILLEGALLY TOUCHED, KICKED OR BATTED



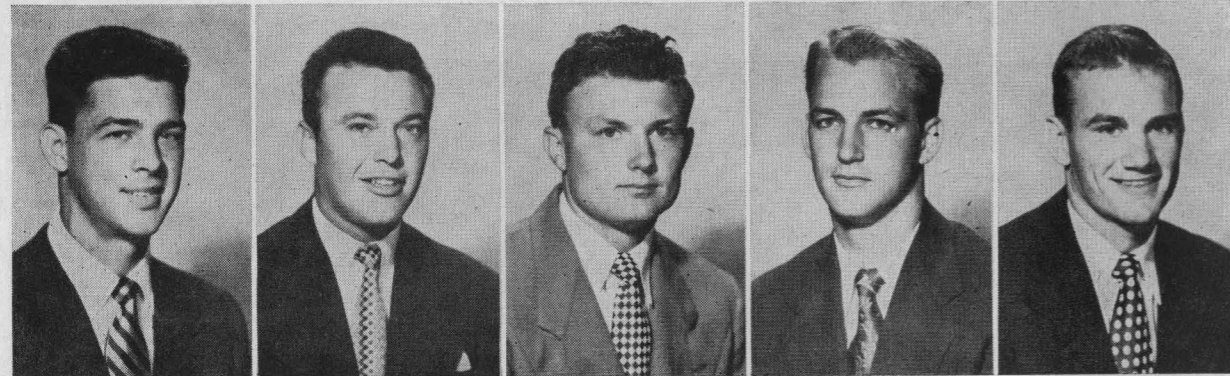
FOLLOW YOUR TEAM TO THE GAME

Fly

TRANS-TEXAS

Airways

CALL TRANS-TEXAS OR YOUR LOCAL TRAVEL AGENT



21—Atchley Proctor 22—Billy Ed Daniels 23—Bill Gaskamp 24—Dan Drake 25—Buddy Grantham

We are Proud . . .

Of our many young depositors who are starting now to acquire the independence of a savings account—the satisfaction of planned financing.

For over 30 years it has been our policy to extend to our customers a friendly understanding of their financial responsibilities. We invite you to drop by 712 Main to talk with us about our Free Services, Savings Plans, Loan Plans, Trust Facilities and Normal Charge Services.

Member Federal Deposit Insurance Corporation

National Bank of Commerce OF HOUSTON "The Bank of Courtesy"



WINNING COMBINATION . . .

Dependability and economy are the star performers on the United Gas service team. Dependability plays an important part throughout every season of the year . . . making it possible for your family to constantly enjoy the comfort and convenience offered by fine gas appliances. And because your natural gas service is so economical, it represents the wisest fuel investment you can make in your home, your business or your industry. United Gas is proud to have the opportunity of making this important gas service available to you and your neighbors.

For The Best In Gas Service Call . . . Blackstone 0271



UNITED GAS

THE BIGGEST BARGAIN IN YOUR HOME TODAY PHONE AT 5111 87 Years of Dependable GAS Service to Houstonians

The Rice Athletic Association Would Appreciate Your Patronizing Our Advertisers



The Shamrock

HOUSTON

"America's Magnificent Hotel"

For the All-American Week-End



Make The Shamrock your headquarters hotel — where gracious hospitality and a warm welcome await you. You'll enjoy the comfort, the faultless service, the superb cuisine, the luxurious facilities that only The Shamrock affords its guests.

Cavalcade of Stars

There's always exciting big-name entertainment in The Shamrock's famed Emerald Room . . . stars of stage, radio and motion pictures appear continually, in person, in the Cavalcade of Stars. You'll enjoy your "night out" in The Shamrock's supper clubs.

GLENN McCARTHY, President

M. JACK FERRELL, Managing Director

Represented for National Advertising by DON SPENCER COMPANY, INC., 271 Madison Ave., New York 16, N.Y.

Foote's Cafeteria

Houston's Finest Suburban Dining Room

2 Blocks West of Stadium

Continuous Service 11:00 A.M. to 8:30 P.M.

2407 RICE BOULEVARD

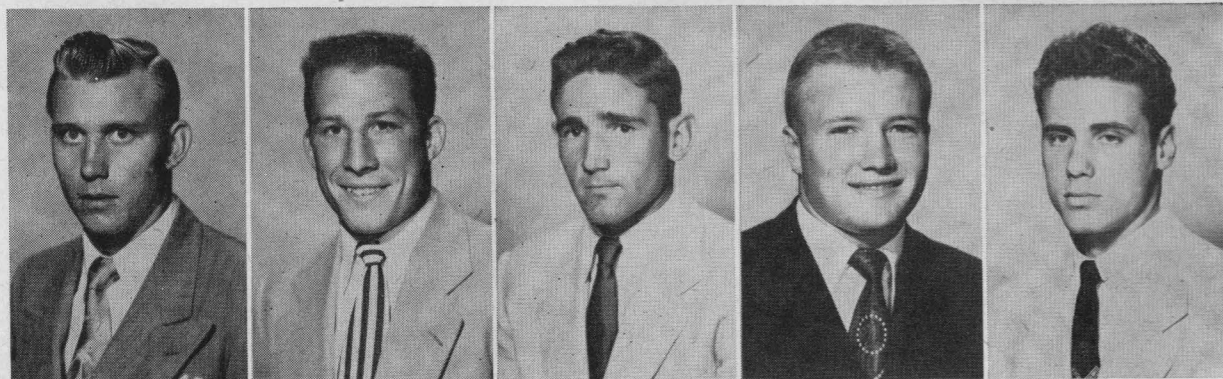
7 Days a Week

CONSOLIDATED CHEMICAL INDUSTRIES INC.

Heavy Chemicals for Industry

640 MELLIE ESPERSON BLDG.

HOUSTON 2, TEXAS



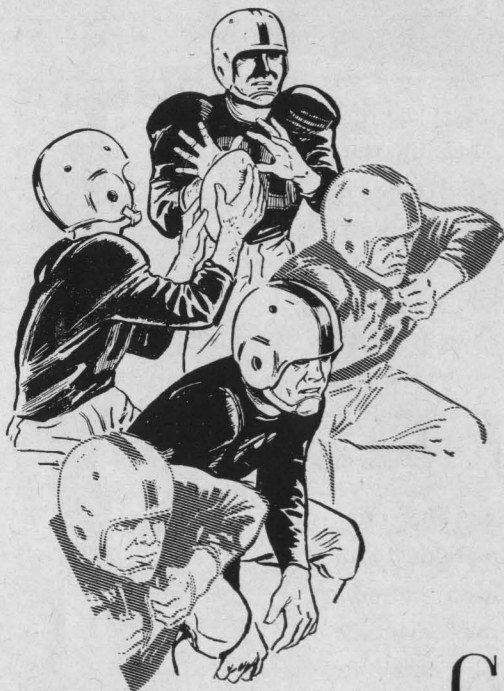
26—Leroy Fenstemaker

31—Morris Stone

35—Bill Frazier

36—Gordon Kellogg

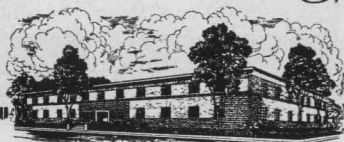
39—Don Costa



You,
Your Great Southerner
and Life Insurance

are an unbeatable combination for
winning financial independence for
your family and yourself.

GREAT SOUTHERN
Life Insurance Company



4310 Dunlavy • Houston 6, Texas

NAME BRAND
Sporting Goods

OPEN DAILY 9 A.M.-6 P.M.

HOUSTON SPORTS SHOP

4717 Main Street, Houston • Telephone KE-8660, JU-2131



40—Tommy Lynch

42—Don Whittaker

43—Carl Johnson

45—David Johnson

47—Dicky Moegle



**EVERYBODY'S
YELLING FOR**

**THE BEER WITH THAT
SMOOTH, MILD FLAVOR**

Yes Sir. — here's a beer to cheer — Southern Select! The beer with that smooth, mild flavor! It has the extra point that makes the difference — It's Pilsenized — light and bright — always tastes just right! One taste of this wonderful golden dry brew and you'll yell for the "Sparkle beer", too!

ITS PILSENIZED — HAS SPARKLE

Southern Select BEER

GALVESTON-HOUSTON BREWERIES, INC., GALVESTON, TEXAS

Enjoy
the Finest Steaks
Obtainable

YOU SELECT the steak of your choice from our gleaming Steak Bar;

YOU BRAND IT as you wish it prepared: "R" for rare, "M" for medium, etc.

WE COOK IT on our grill, or our brand new charcoal broiler, as you prefer.

ERNEST COKER'S

Ye Old College Inn

6545 SOUTH MAIN

LY-6484

Serving Hours: 5 p.m. to 11 p.m. daily
Noon til 9 p.m. Sunday

CLOSED TUESDAY

Rice Freshman Football

Two big home games here at the Rice Stadium feature the five-game schedule of the 1952 Rice Institute freshman football team. On Friday night, October 17th, the Owlets play the S.M.U. Colts and on Friday night, October 24th, they entertain the University of Texas first year team.

Several outstanding high school players of 1951 are among the squad learning the intricacies of the Rice grid system under the tutelage of head coach Charley Moore and Harold Stockbridge.

Tickets to the two big home games of the freshman team may be purchased at the ticket window at the Rice Gymnasium.

Here is the complete schedule for the Owlets for '52:

- 3 October (Friday) 2 p.m.
T.C.U. Freshmen at Fort Worth
- 10 October (Friday) 8 p.m.
Del Mar Junior College at Corpus Christi
- 17 October (Friday) 8 p.m.
S.M.U. Freshmen at Rice Stadium
- 24 October (Friday) 8 p.m.
Texas Freshmen at Rice Stadium
- 6 November (Thursday) 2 p.m.
Texas A. & M. Freshmen at College Station

UNIVERSAL

PACKING & GASKET CO.

Houston Owned
and Operated



Home of Universal, where packings and gaskets are manufactured for every industrial need.



"The Official Watch for Timing this Game is Longines . . . The World's Most Honored Watch"

Refreshing

DRINK

Coca-Cola

REG. U.S. PAT. OFF.

RICE INSTITUTE (Offense)

BY POSITIONS

LE Bridges 89	LT Timmons 69	LG Little 61	C Moore 56	RG Lee 62	RT Crockett 71	RE Day 80
			QB Drake 24			
	LH Frazier 35				RH Stone 31	
			FB Garbrecht 19			

UNIVERSITY OF TEXAS (Defense)

BY POSITIONS

LE Georges 87	LT D. Miller 30	G Sewell 66	RT Polk 79	RE Massey 81
	LLB Ingraham 40	MLB Rosser 31	RLB Barton 55	
LH Raley 41				RH Spring 88
		SAFETY White 23		

See line-ups on page 20 for Texas U. offense and Rice defense

COPYRIGHT 1952, COCA-COLA COMPANY

HOUSTON COCA-COLA BOTTLING COMPANY ★ 2800 BISSONNET

FOR YOU

FIRST PREMIUM QUALITY CIGARETTE REGULAR AND KING-SIZE!

TEXAS U. ROSTER

No.	Name	Pos.	Age	Ht.	Wt.
10	Bible, Bill '54	B	21	5-10	180
11	Smith, Dean '54	B	20	5-11	165
12	Parkinson, Paul '55	B	20	6-2	170
14	Pace, Jimmy Dan '53	B	20	5-9	180
15	Quinn, Billy '55	B	19	5-11	180
16	Matthews, Rayborn '55	B	20	6-0	180
20	Andrews, Bunny '54	B	21	5-10	170
21	Jones, T. '53	B	21	6-1	170
22	Dyer, Glen '55	B	18	6-3	180
23	White, Bill '54	B	20	6-1	170
25	Brooks, Howard '54	B	20	6-2	190
27	Miller, Dick '55	B	18	5-9	170
30	Miller, Don '55	T	18	6-0	205
31	Rosser, Jim '55	B	19	5-11	185
32	Cameron, Dougal '54	B	20	5-10	180
33	Price, Pod '53	B	20	5-10	190
34	Kelley, Ed '55	B	19	6-1	175
35	Ochoa, Richard '53	B	21	6-2	200
36	Pierson, James '55	B	21	6-0	185
37	Cline, Bill '55	B	19	6-0	183
39	Anglin, Ken '55	B	19	6-1	188
40	Ingraham, Hub '54	B	20	6-2	195
41	Raley, Bob '53	B	20	6-2	195
42	Graham, Larry '55	B	19	6-1	190
43	Burket, Ferdy '55	B	19	6-0	180
44	Dawson, Gib '53	B	22	5-11	175
45	Delaney, Wayne '55	B	19	6-2	175
50	McDonald, Bill '53	C	21	6-2	195
51	Reeder, Hugh '53	C	22	6-0	210
53	Taylor, Jack '55	C	19	6-2	205
54	McDonald, Joe '55	C	20	6-1	195
55	Barton, Jack '53	C	22	6-1	205
59	Younger, Leighton '55	C	20	6-2	205
60	Studer, Stan '54	G	20	6-0	205
61	Earney, Paul '54	G	21	5-10	205
62	Allen, George '55	G	20	5-11	215
63	Flinn, Bob '55	G	20	6-1	195
65	Dawkins, Doug '54	G	23	6-0	215
66	Sewell, Harley '53	G	21	6-1	215
67	Leath, Marvin '53	G	21	6-1	200
68	Branch, Phil '54	G	19	6-0	195
69	Johnson, Bull '54	G	21	5-11	217
70	Lansford, Buck '55	T	18	6-2	215
71	Harlow, Ken '55	T	19	6-4	230
72	Kalmus, Lawrence '55	T	20	6-4	220
73	Petrovich, Charles '54	T	20	6-1	205
74	Gawlik, Dick '55	T	20	6-4	215
75	Genthner, Charles '53	T	20	6-2	215
77	McGraw, Don '55	T	20	5-11	217
78	Finchum, Frank '55	T	20	6-0	215
79	Polk, Clifford '54	T	19	6-2	205
80	Moon, Howard '55	E	20	6-2	195
81	Massey, Carlton '54	E	22	6-4	210
82	Kitchens, Malcolm '55	E	19	6-1	180
83	Hand, Troy Lee '54	E	20	6-3	190
84	McMurry, Jack '55	E	20	6-1	195
85	Stolhandske, Tom '53	E	21	6-2	210
87	Georges, Bill '53	E	21	6-1	195
88	Spring, Gilmer '54	E	20	6-1	190



RICE INSTITUTE SQUAD

No.	Name	Pos.	Age	Ht.	Wt.
11	Horton Nestrsta, 54	B	21	5-9	149
15	Dickie Bob Haddox, 53	B	20	5-9	162
16	Bobby Warren, 55	B	20	5-7	165
19	Bob Garbrecht, 54	B	20	6-1	200
20	Oree "Buzzy" Bryan, 55	B	20	6-1	185
21	Atchley Proctor, 55	B	18	6-0	170
22	Billy Ed Daniels, 53	B	21	6-0	168
23	Bill Gaskamp, 54	B	20	5-10	167
24	Dan Drake, 54	B	21	6-2	190
25	Buddy Grantham, 54	B	19	6-2	175
26	Leroy Fenstermaker, 54	B	20	6-2	195
31	Morris Stone, 55	B	19	5-9	167
35	Bill Frazier, 53	B	21	5-10	165
36	Gordon Kellogg, 55	B	19	5-10	171
39	Don Costa, 55	B	19	6-0	194
40	Tommy Lynch, 55	B	20	6-0	182
42	Don Whittaker, 54	B	19	6-1	192
43	Carl Johnson, 54	B	19	5-11	179
45	David Johnson, 54	B	20	6-0	176
47	Dicky Moegle, 55	B	18	6-0	167
49	Gino Biasatti, 55	B	20	5-10	185
50	Ronald Lassiter, 55	C	20	6-2	202
54	Don Rhoden (c-c), 53	C	19	5-11	200
55	Leo Rucka, 54	C	21	6-2	204
56	Bobby Moore, 53	C	22	6-2	205
59	Jimmy Jax, 55	C	19	6-2	200
60	Kenny Paul, 55	G	19	5-11	195
61	Gene Little, 53	G	23	6-0	205
62	LaMar "Skip" Lee, 54	G	20	6-0	197
63	Jerry Fitzpatrick, 55	C	20	6-1	202
64	Walter Schleyer, 54	G	20	5-11	190
65	Dan Hart, 54	G	20	5-10	195
66	Dan "Hans" Wagner, 55	G	21	6-1	205
67	W. C. Treadway, 54	G	20	6-1	200
68	Larry Lundstedt, 55	G	18	5-11	188
69	James Timmons, 53	G	22	6-1	198
70	John Hudson, 54	T	19	6-0	212
71	Bill Crockett (c-c), 53	T	20	6-2	206
72	Max Schuebel, 54	T	20	6-1	210
73	LaVon Cox, 55	T	19	6-0	230
74	Robert Cashion, 55	T	20	6-1	217
75	Layton Golemon, 55	T	18	6-4	210
76	James Ellis, 55	T	19	6-0	200
77	Dan Winship, 55	G	19	6-0	215
78	Richard Chapman, 54	T	19	6-6	218
79	Buddy Edwards, 54	T	21	6-2	230
80	Jack Day, 53	E	22	6-0	195
81	Bill Fisk, 54	E	21	6-0	190
82	R. E. Worthham, 55	E	19	5-11	185
83	R. J. Schroeder, 54	E	20	6-4	186
84	James Heflin, 53	E	21	6-2	188
85	"Chuck" Stephenson, 53	E	18	6-1	180
86	LaDon Cox, 53	E	19	6-0	182
87	Murff Bledsoe, 53	E	19	6-0	176
88	Sammy Ward, 54	E	20	6-0	193
89	Blois Bridges, 54	E	20	6-1	180
90	Lamoine Holland, 55	E	19	6-2	185
91	Tommy Wilson, 54	E	19	6-2	187

...Much Milder

CHESTERFIELD

LARGEST SELLING CIGARETTE IN AMERICA'S COLLEGES

DRINK
Coca-Cola
REG. U.S. PAT. OFF.

Delicious

UNIVERSITY OF TEXAS (Offense)

BY POSITIONS

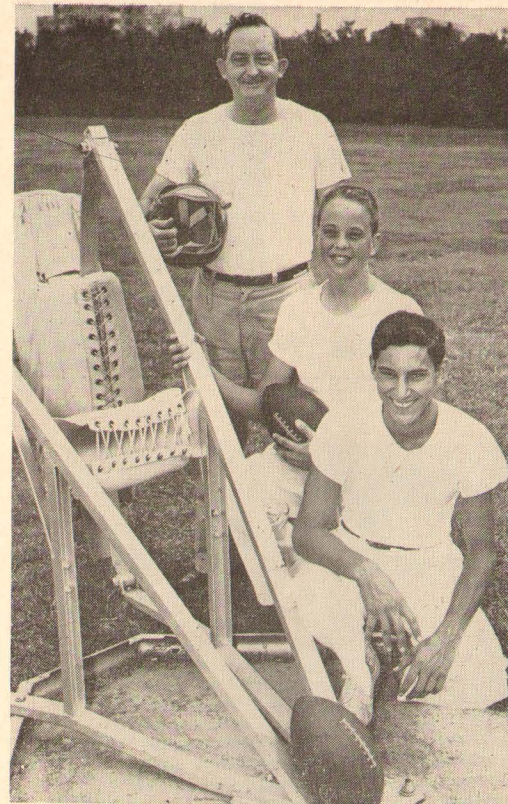
LE	LT	LG	C	RG	RT	RE
Massey	Lansford	Sewell	McDonald	Branch	Genthner	Stolhandske
81	70	66	50	68	75	85
QB						
Jones						
21						
LH			RH			
Dawson			Pace			
44			14			
FB						
Ochoa						
35						

RICE INSTITUTE (Defense)

BY POSITIONS

LE	LT	LG	RG	RT	RE
Ward	Schuebel	Chapman	Paul	Hudson	Fisk
88	72	78	60	70	81
LLB			RLB		
Rhoden			Rucka		
54			55		
LH			RH		
Kellogg			Bryan		
36			20		
S					
Nesrsta					
11					

See line-ups on page 17 for Texas U. defense and Rice offense



J. B. Sorsby, Howard Schaumburg, Louis Loeser

The man who looks after the storing, issuing, and repairing of the Owls' athletic equipment is J. B. Sorsby, an employee of the Institute for over 20 years.

The student manager of the football team is Norman Moore, who looks after the equipment on the field, assists in detail work in the dressing room, and handles a number of duties.

MEDICAL, TRAINING FACILITIES FOR RICE ATHLETICS



Trainer Eddie Wojecki

The finest in medical and training care and the most modern equipment available is provided athletes in all sports at Rice Institute.

This important phase of an athletic program often is overlooked by spectators, whose chief interest is in the action on the playing field. However, there are a number of persons whose services "behind the scenes" mean a great deal toward having a successful all-round athletic program.

Dr. Hugh Welch has served as team physician for many years, and with consulting physicians Dr. Jack Brannon and Dr. E. T. Smith the Rice players have the services of an excellent medical staff.

One of the busiest men on the Rice athletic scene is head athletic trainer Eddie Wojecki. His modern training quarters are where the athletes receive top care for injuries, and where the players get advice on diet and myriad subjects.

As a tribute to his ability, Wojecki received a signal honor for Rice Institute and himself last summer when he was named head trainer for the American Olympic team that competed in Helsinki, Finland.

Ablly assisting in the training room are student trainers Louis Loeser, a sophomore, and Howard Schaumburg, former Owl "mascot" and now in high school.

COMPLIMENTS

OF

HERRIN TRANSPORTATION COMPANY

2300 WALKER

FA-5111

FACTS ABOUT RICE INSTITUTE

The Rice Institute is privately endowed and non-sectarian.

The Institute is named for its founder, the late William Marsh Rice of Houston.

Rice Institute has a limited enrollment with a student body of about 1,500.

In effect, all Rice students are on scholarships as no tuition is charged those accepted.

The school's picturesque campus covers 300 acres in Houston's southwest section.

A major building program has seen several million dollars in new construction on the campus.

New structures include the Fondren Library, Abercrombie Engineering Laboratory, M. D. Anderson class room building, Wiess Hall, dormitory for men, and the Rice Stadium and Rice Gymnasium.

The Fondren Library, one of the finest and most modern in the nation, contains about 250,000 volumes.

"The Official Watch for Timing this Game is Longines . . . The World's Most Honored Watch"

QUINBY EMPLOYMENT SERVICE

"A Name Worth Remembering"

You can benefit from our many years
experience in the personnel field
Executive, Office, Sales, and Technical Personnel

Member National Employment Board, Chamber of Commerce
and National Association Personnel Consultants

409 Bankers Mortgage Building

Houston 2, Texas



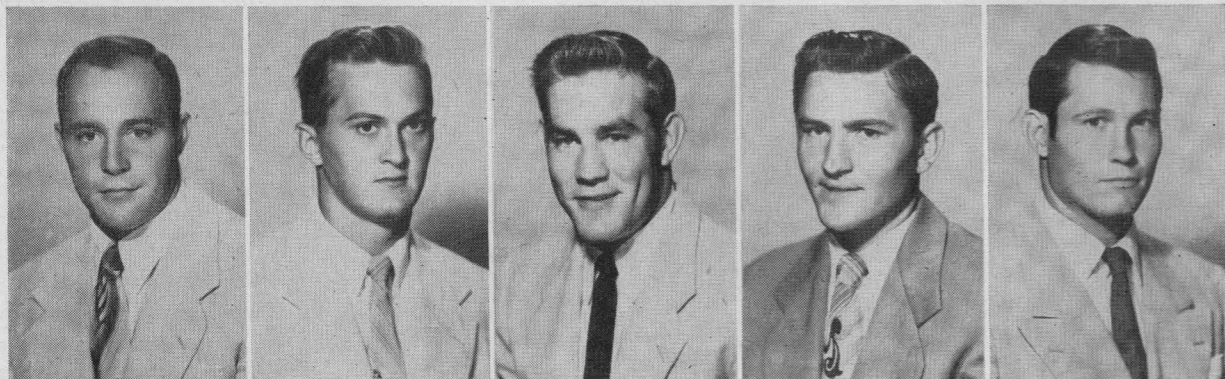
2020 Main Street

"THE BANK OF CORDIALITY"

Member Federal Deposit Insurance Corporation

BEST WISHES
TO THE OWLS

W. S. Bellows Construction Corp.



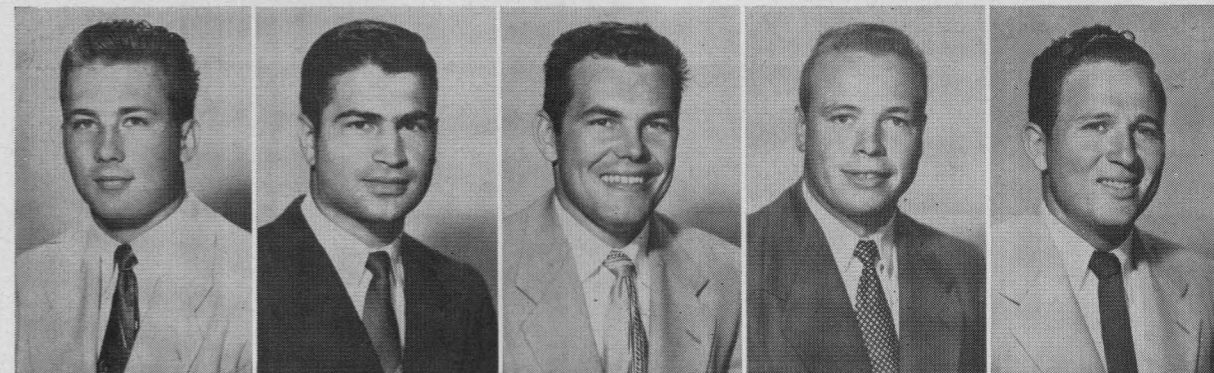
49—Gino Biasatti

50—Ronald Lassiter

54—Don Rhoden (c-c)

55—Leo Rucka

56—Bobby Moore



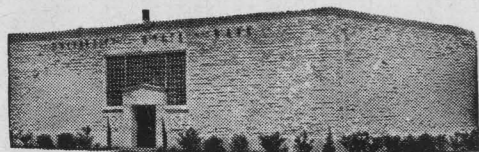
59—Jimmy Jax

60—Kenny Paul

61—Gene Little

62—LaMar "Skip" Lee

63—Jerry Fitzpatrick



COMPLETE
METROPOLITAN
SERVICE

WITH
RESIDENTIAL
CONVENIENCE



Serving Southwest Houston

West University Place, Southside Place and Bellaire

AUTOMOBILE TELLER SERVICE

UNIVERSITY STATE BANK

KEystone 5574

6135 KIRBY DRIVE at AMHERST

FIRST STATE BANK

BELLAIRE, TEXAS

MOhawk 3413

5123 BELLAIRE BOULEVARD

MEMBER FEDERAL DEPOSIT INSURANCE CORPORATION

MAKE YOUR GOAL
BEFORE THE KICKOFF
AT

Cousin's 4401 FANNIN

OR
AFTER THE FINAL GUN



ED PRICE, Head Coach



D. X. BIBLE, Athletic Director

Now in its 60th season of fielding a football team, the University of Texas this afternoon faces one of its oldest and staunchest rivals in the Rice Institute Owls.

The largest school of higher learning in Texas, the state university has an enrollment of 11,823 at the main school in Austin. There are several branch schools including the Medical School at Galveston and the School of Dentistry at Houston.

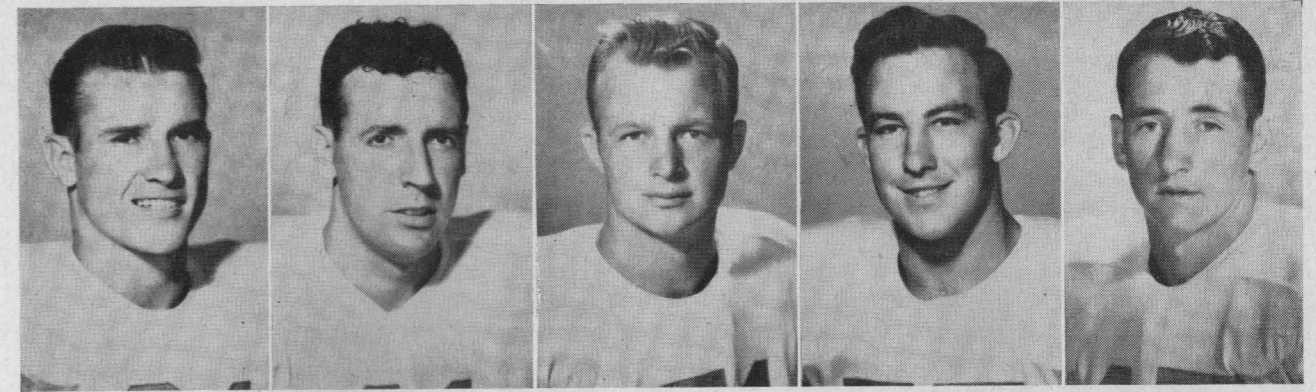
Judge James P. Hart is chancellor of the University, while Dr. J. C. Dolley is acting president.

Dana X. Bible is athletic director of an outstanding nine-sport intercollegiate athletic program. Mr. Bible came to the University fifteen years ago as head football coach and athletic director, relinquishing the active coaching role a few years ago to concentrate on the increasing duties of athletic director. The head grid coach now is Edwin Booth Price, a member of the Texas athletic staff since 1936, less three years service overseas as a Naval officer during the war.

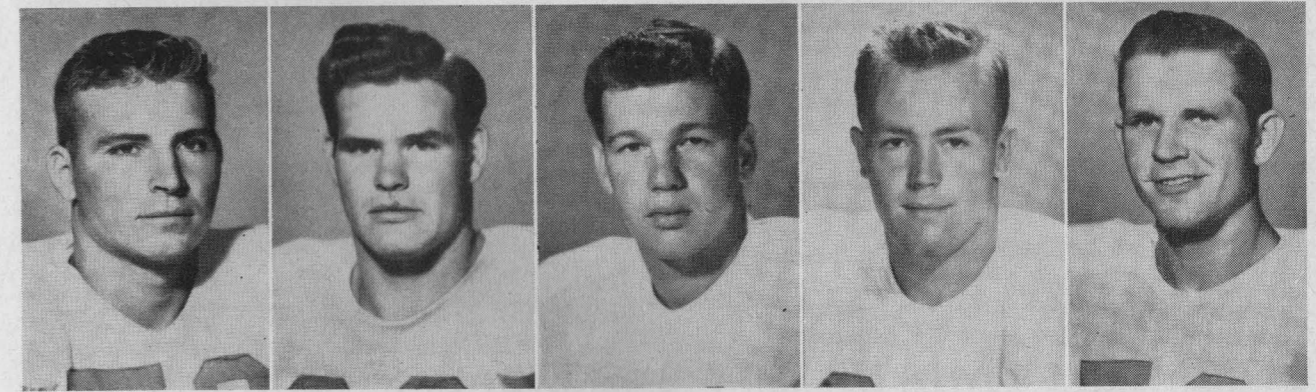
UNIVERSITY OF TEXAS COACHING STAFF



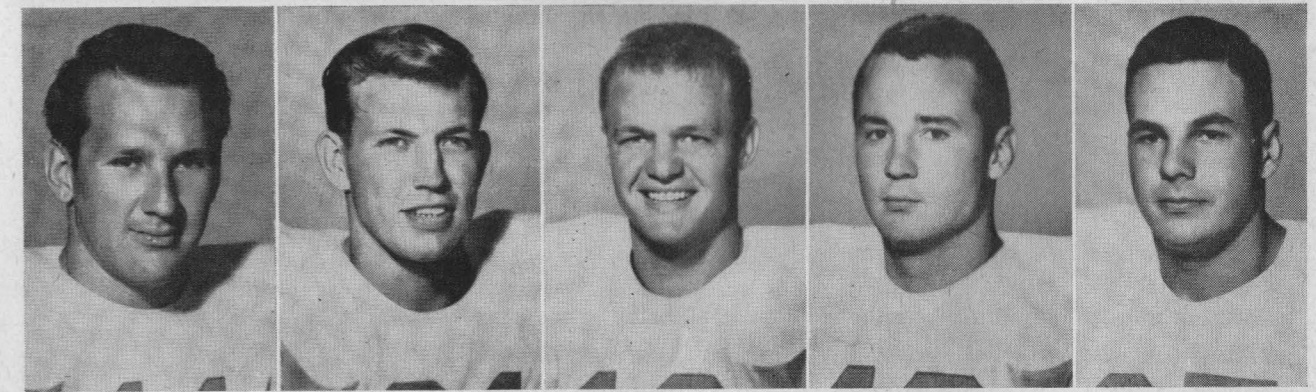
Trainer Frank Medina, Coaches Ox Emerson, Bully Gilstrap, Bill Dubose, Buddy Jungmichel, Eck Curtis, J. T. King and Ed Price



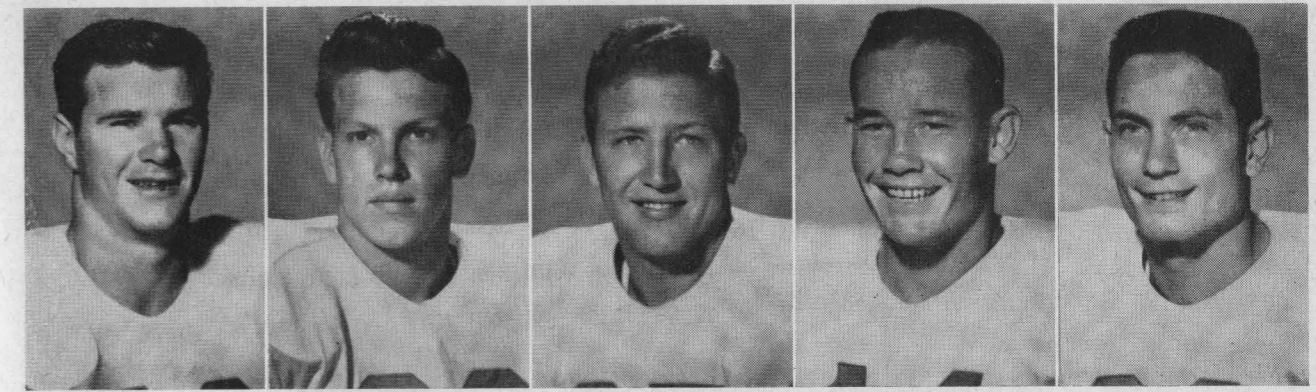
81—Carlton Massey 41—Bob Raley 51—Hugh Reeder 75—Charles Genthner 44—Gib Dawson



70—Buck Lansford 30—Don Miller 40—Bob Ingraham 66—Harley Sewell 50—Bill McDonald



35—Richard Ochoa 21—T. Jones 12—Paul Parkinson 42—Larry Graham 87—Bill Georges



68—Phil Branch 88—Gilmer Spring 85—Tom Stolhandske 14—Jimmy Dan Pace 80—Howard Moon

1952 CO-CAPTAINS OF RICE INSTITUTE OWLS



DON RHODEN



BILL CROCKETT

RICE OWLS VARSITY BASKETBALL SCHEDULE

All home games of coach Don Suman's Owls are played on Autry Court in the new Rice Gymnasium, completed in 1951, which seats 6,000 fans for basketball games.

- 11 Dec. (Thur.) Sam Houston State at Huntsville
- 13 Dec. (Sat.) Kansas University at Houston
- 18 Dec. (Thur.) Tulane University at Houston
- 20 Dec. (Sat.) Colorado A.&M. at Houston
- 23 Dec. (Tues.) Stephen F. Austin at Nacogdoches
- 26-30 December—Owls play three games in S.W.C. tournament at Dallas
- 6 Jan. (Tues.) *Southern Methodist at Houston
- 13 Jan. (Tues.) *Baylor University at Waco
- 17 Jan. (Sat.) *Arkansas University at Fayetteville
- 20 Jan. (Tues.) *Texas Christian at Houston
- 24 Jan. (Sat.) *Texas A.&M. at Houston
- 5 Feb. (Thur.) Sam Houston State at Houston
- 7 Feb. (Sat.) *University of Texas at Austin
- 9 Feb. (Mon.) *Arkansas University at Houston
- 14 Feb. (Sat.) *Texas A.&M. at College Station
- 17 Feb. (Tues.) *Baylor University at Houston
- 21 Feb. (Sat.) *Texas Christian at Fort Worth
- 24 Feb. (Tues.) *University of Texas at Houston
- 3 Mar. (Tues.) *Southern Methodist at Dallas

* Southwest Conference Game.

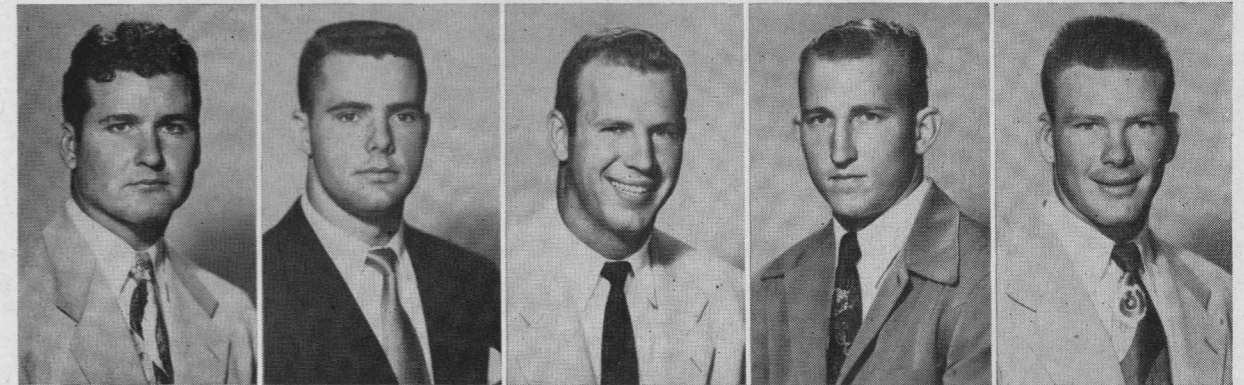
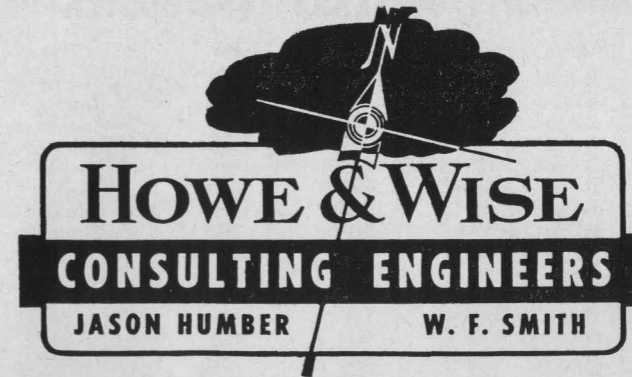
Freshman Basketball Schedule

The 1952-53 Rice freshman basketball team will play six of its 12 games at home as preliminary contests to varsity games at Autry Court in the Rice Gymnasium. Charles Moore is freshman cage coach. Here is the schedule:

- 11 Dec.—Wharton Jr. College at Wharton
- 13 Dec.—Victoria Jr. College at Houston
- 18 Dec.—Allen Academy at Houston
- 20 Dec.—Wharton Jr. College at Houston
- 13 Jan.—Baylor Freshmen at Waco
- 17 Jan.—Allen Academy at Bryan
- 24 Jan.—Texas A. & M. Freshmen at Houston
- 7 Feb.—Texas Freshmen at Austin
- 14 Feb.—Texas A. & M. Freshmen at College Station
- 17 Feb. Baylor Freshmen at Houston
- 20 Feb.—Victoria Jr. College at Victoria
- 24 Feb.—Texas Freshmen at Houston

Jason Humber
Class of '22

W. F. Smith
Class of '26



64—Walter Schleyer

65—Dan Hart

66—Dan "Hans" Wagner

67—W. C. Treadway

68—Larry Lundstedt

Complete Insurance Coverage

American General Group

American General Investment Corporation

American General Life Insurance Company

American General Insurance Company

RUSK BUILDING

HOUSTON, TEXAS

The Rice Athletic Association Would Appreciate Your Patronizing Our Advertisers

UNIVERSITY OF TEXAS 1952 ROSTER

No.	Player	Pos.	Age	Ht.	Wt.	Class	Home Town
10	Bible, Bill	B	21	5-10	180	Junior	Austin, Texas
11	Smith, Dean	B	20	5-11	165	Junior	Graham, Texas
12	Parkinson, Paul	B	20	6-2	170	Soph.	Baytown, Texas
14	Pace, Jimmy Dan	B	20	5-9	180	Senior	Kenedy, Texas
15	Quinn, Billy	B	19	5-11	180	Soph.	San Antonio, Texas
16	Matthews, Rayborn	B	20	6-0	180	Soph.	Corsicana, Texas
20	Andrews, Bunny	B	21	5-10	170	Junior	Dallas, Texas
21	Jones, T.	B	21	6-1	170	Senior	Childress, Texas
22	Dyer, Glen	B	18	6-3	180	Soph.	Sinton, Texas
23	White, Bill	B	20	6-1	170	Junior	Denton, Texas
25	Brooks, Howard	B	20	6-2	190	Junior	Timpson, Texas
27	Miller, Dick	B	18	5-9	170	Soph.	Cleburne, Texas
31	Rosser, Jim	B	19	5-11	185	Soph.	Cleburne, Texas
32	Cameron, Dougal	B	20	5-10	180	Junior	San Saba, Texas
33	Price, Pod	B	20	5-10	190	Senior	Electra, Texas
34	Kelley, Ed	B	19	6-1	175	Soph.	Cuero, Texas
35	Ochoa, Richard	B	21	6-2	200	Senior	Laredo, Texas
36	Pierson, James	B	21	6-0	185	Soph.	St. Jo, Texas
37	Cline, Bill	B	19	6-0	183	Soph.	Wharton, Texas
39	Anglin, Ken	B	19	6-1	188	Soph.	Groom, Texas
40	Ingraham, Hub	B	20	6-2	195	Junior	Abilene, Texas
41	Raley, Bob	B	20	6-2	195	Senior	Bowie, Texas
42	Graham, Larry	B	19	6-1	190	Soph.	Houston, Texas
43	Burket, Ferd	B	19	6-0	180	Soph.	San Antonio, Texas
45	Delaney, Wayne	B	19	6-2	175	Soph.	Sherman, Texas
44	Dawson, Gib	B	22	5-11	175	Senior	Douglas, Texas
50	McDonald, Bill	C	21	6-2	195	Senior	Orange, Texas
51	Reeder, Hugh	C	22	6-0	210	Senior	Port Arthur, Texas

1952 RICE INSTITUTE OWLS VARSITY FOOTBALL ROSTER

No.	Name	Pos.	Wt.	Ht.	Age	Class	Exp.	Home Town
11	Horton Nestrta	LH	149	5' 9"	21	Junior	1 VL	San Antonio
15	Dickie Bob Haddox	RH	162	5' 9"	20	Senior	2 VL	Navasota
16	Bobby Warren	LH	165	5' 7"	20	Soph.	Sqd.	Austin
19	Bob Garbrecht	FB	200	6' 1"	20	Junior	Sqd.	New York City, N.Y.
20	Oree "Buzzy" Bryan	QB	185	6' 1"	20	Soph.	Sqd.	Houston (San Jacinto)
21	Atchley Proctor	QB	170	6' 0"	18	Soph.	FL	DeKalb
22	Billy Ed Daniels	LH	168	6' 0"	21	Senior	1 VL	Kerrville
23	Bill Gaskamp	RH	167	5' 10"	20	Junior	J.C.	Brenham
24	Dan Drake	QB	190	6' 2"	21	Junior	1 VL	Fort Worth
25	Buddy Grantham	QB	175	6' 2"	19	Junior	Sqd.	Grand Prairie
26	Leroy Fenstemaker	QB	195	6' 2"	20	Junior	Sqd.	Llano
31	Morris Stone	RH	167	5' 9"	19	Soph.	FL	Kerrville
35	Bill Frazier	LH	165	5' 10"	21	Senior	1 VL	Pasadena
36	Gordon Kellogg	LH	171	5' 10"	19	Soph.	FL	Baytown
39	Don Costa	LH	194	6' 0"	19	Soph.	FL	Houston (St. Thomas)
40	Tommy Lynch	FB	182	6' 0"	20	Soph.	FL	Houston (San Jacinto)
42	Don Whittaker	FB	192	6' 1"	19	Junior	Sqd.	Dallas
43	Carl Johnson	RH	179	5' 11"	19	Junior	Sqd.	Houston (San Jacinto)
45	David "Kosse" Johnson	FB	176	6' 0"	20	Junior	1 VL	Baytown
47	Dicky Moegle	LH	167	6' 0"	18	Soph.	FL	Taylor
49	Gino Biasatti	FB	185	5' 10"	20	Soph.	Sqd.	Dallas
50	Ronald Lassiter	C	202	6' 2"	20	Soph.	FL	Houston (San Jacinto)
54	Don Rhoden (c-c)	C	200	5' 11"	19	Senior	2 VL	Kerrville
55	Leo Rucka	C	204	6' 2"	21	Junior	1 VL	Crosby
56	Bobby Moore	C	205	6' 2"	22	Senior	2 VL	Amarillo
59	Jimmy Jax	C	200	6' 2"	19	Soph.	FL	Houston (Lamar)
60	Kenny Paul	RG	195	5' 11"	19	Soph.	FL	Houston (Lamar)
61	Gene Little	LG	205	6' 0"	23	Senior	2 VL	Corpus Christi

Always A Winning Combination!



DRILLING STABILIZERS



KINNEAR COMBINATION BITS



BURRIS KEY SEAT WIPERS

AUTO FLEX-ECCENTRIC GUIDE CASING MILL



A-1 BIT & TOOL COMPANY



CHECK VALVES



WATER CONTROL VALVE



JET BITS



WIRE LINE CORE BARREL



SIDE CORE WALL BARRELS



SURE SHOT DEVIATION RECORDING INSTRUMENT



MILLING TOOLS

9000 ALMEDA ROAD

HOUSTON TEXAS

53	Taylor, Jack	C	19	6-2	205	Soph.	Sherman, Texas
54	McDonald, Joe	C	20	6-1	195	Soph.	Sherman, Texas
55	Barton, Jack	C	22	6-1	205	Senior	Denton, Texas
59	Younger, Leighton	C	20	6-2	205	Soph.	Austin, Texas
60	Studer, Stan	G	20	6-0	205	Junior	Austin, Texas
61	Earney, Paul	G	21	5-10	205	Junior	Austin, Texas
62	Allen, George	G	20	5-11	215	Soph.	Pettus, Texas
63	Flinn, Bob	G	20	6-1	195	Soph.	Taft, Texas
65	Dawkins, Doug	G	23	6-0	215	Junior	Alexandria, La.
66	Sewell, Harley	G	21	6-1	215	Senior	St. Jo, Texas
67	Leath, Marvin	G	21	6-1	200	Senior	Henderson, Texas
68	Branch, Phil	G	19	6-0	195	Junior	Gaston, Texas
69	Johnson, Bull	G	21	5-11	217	Junior	Austin, Texas
70	Lansford, Buck	T	18	6-2	215	Soph.	Carrizo Springs, Texas
71	Harlow, Ken	T	19	6-4	230	Soph.	Fort Worth, Texas
72	Kalmus, Lawrence	T	20	6-4	220	Soph.	Wharton, Texas
73	Petrovich, Charles	T	20	6-1	205	Junior	Palestine, Texas
74	Gawlik, Dick	T	20	6-4	215	Soph.	San Antonio, Texas
75	Genthner, Charles	T	20	6-2	215	Senior	Dallas, Texas
30	Miller, Don	T	18	6-0	205	Soph.	Port Neches, Texas
77	McGraw, Don	T	20	5-11	217	Soph.	Abilene, Texas
78	Finchum, Frank	T	20	6-0	215	Soph.	Port Arthur, Texas
79	Polk, Clifford	T	19	6-2	205	Junior	Handley, Texas
80	Moon, Howard	E	20	6-2	195	Soph.	Houston, Texas
81	Massey, Carlton	E	22	6-4	210	Junior	Rockwall, Texas
82	Kitchens, Malcolm	E	19	6-1	180	Soph.	San Antonio, Texas
83	Hand, Troy Lee	E	20	6-3	190	Junior	Vernon, Texas
84	McMurry, Jack	E	20	6-1	195	Soph.	Marshall, Texas
85	Stolhandske, Tom	E	21	6-2	210	Senior	Baytown, Texas
87	Georges, Bill	E	21	6-1	195	Senior	Fort Worth, Texas
88	Spring, Gilmer	E	20	6-1	190	Junior	Lufkin, Texas

62	LaMar "Skip" Lee	RG	197	6' 0"	20	Junior	Sqd.	Huntsville
63	Jerry Fitzpatrick	C	202	6' 1"	20	Soph.	FL	Harlingen
64	Walter Schleyer	RG	190	5' 11"	20	Junior	Sqd.	San Angelo
65	Dan Hart	RG	195	5' 10"	20	Junior	1 VL	Houston (Milby)
66	Dan "Hans" Wagner	RG	205	6' 1"	21	Senior	1 VL	Schulenberg
67	W. C. Treadway	LG	200	6' 1"	20	Junior	1 VL	Houston (San Jacinto)
68	Larry Lundstedt	LG	188	5' 11"	18	Soph.	FL	Austin
69	James Timmons	LG	198	6' 1"	22	Senior	1 VL	Sweetwater
70	John Hudson	LT	212	6' 0"	19	Junior	1 VL	Center
71	Bill Crockett (c-c)	RT	206	6' 2"	20	Senior	2 VL	Bonham
72	Max Schuebel	LT	210	6' 1"	20	Junior	1 VL	Houston (Reagan)
73	LaVon Cox	RT	230	6' 0"	19	Soph.	FL	Galena Park
74	Robert Cashion	RT	217	6' 1"	20	Soph.	FL	Mexia
75	Layton Golemon	LT	210	6' 4"	18	Soph.	FL	Kerrville
76	James Ellis	LT	200	6' 0"	19	Soph.	FL	West Columbia
77	Dan Winship	LG	215	6' 0"	19	Soph.	Sqd.	Houston (Reagan)
78	Richard Chapman	LT	218	6' 6"	19	Junior	1 VL	Waxahachie
79	Buddy Edwards	RT	230	6' 2"	21	Junior	Sqd.	Texarkana, Ark.
80	Jack Day	RE	195	6' 0"	22	Senior	2 VL	Galena Park
81	Bill Fisk	LE	190	6' 0"	21	Junior	1 VL	Irving
82	R. E. Wortham	RE	185	5' 11"	19	Soph.	FL	Klein
83	R. J. Schroeder	LE	186	6' 4"	20	Junior	1 VL	East Bernard
84	James Heflin	LE	188	6' 2"	21	Soph.	Sqd.	Mart
85	"Chuck" Stephenson	LE	180	6' 1"	18	Soph.	FL	Bloomington
86	LaDon Cox	RE	182	6' 0"	19	Soph.	FL	Galena Park
87	Murff Bledsoe	RE	176	6' 0"	19	Soph.	FL	Pearsall
88	Sammy Ward	LE	193	6' 0"	20	Junior	Sqd.	Laredo
89	Blois Bridges	LE	180	6' 1"	20	Junior	Sqd.	Grand Prairie
90	Lamoine Holland	RE	185	6' 2"	19	Soph.	FL	San Antonio
91	Tommy Wilson	RE	187	6' 2"	19	Junior	J.C.	Graham

"The Official Watch for Timing this Game is Longines . . . The World's Most Honored Watch"

"The Official Watch for Timing this Game is Longines . . . The World's Most Honored Watch"

AT LUNCH OR DINNER

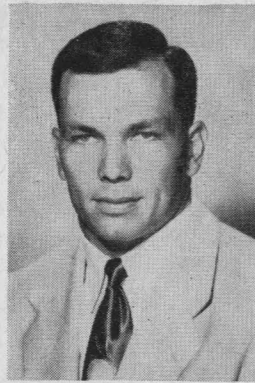
You can always enjoy a delicious meal in the Warwick's Famous Crystal Dining Room

A PLEASURE TO SERVE YOU

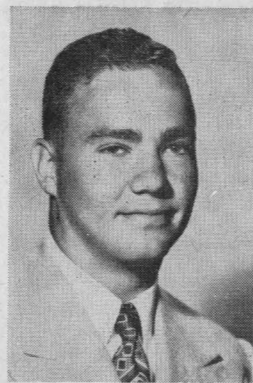


R. T. CULLATHER, Manager

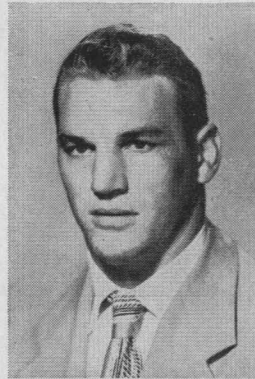
WARWICK HOTEL
AND APARTMENTS
Houston 1, Texas



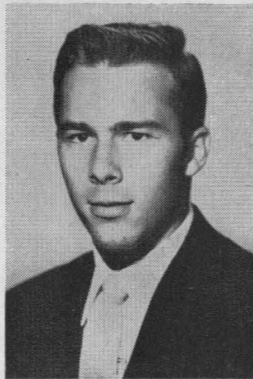
69—James Timmons



70—John Hudson



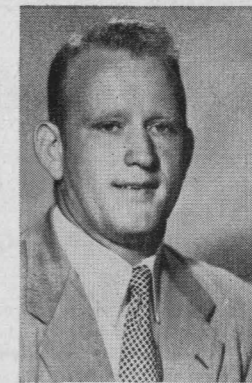
71—Bill Crockett (c-c)



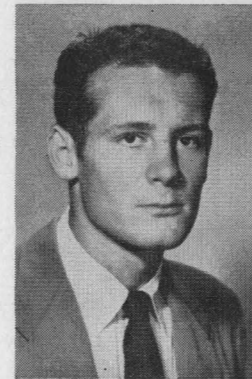
72—Max Schuebel



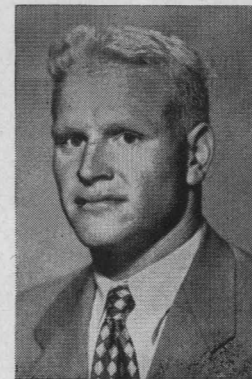
73—LaVon Cox



74—Robert Cashion



75—Layton Golemon



76—James Ellis



FANNIN AT TEXAS

912 MAIN STREET

Salutes the Rice Owls '52

"Stay Dry When the Weather is Wet"

Light weight, compact
Plastic Spectator

PONCHO WITH HOOD

Fits into your purse
or pocket.

1.25

ORDER BY MAIL

PHONE PR-2231

Oshman's Athletic Dept.



Mmmmm... **CAMELLIA** Ice Cream!

Enjoy catering-quality Camellia Ice Cream often . . . it's a great hit for any occasion . . . after-the-game snacks . . . mealtime dessert or party treat. Buy the large family-size carton . . . or individual cube shaped cartons for personalized flavor selection.



CAMELLIA
ice cream

For the name and address of your nearest dealer, call JUstin 0581.

Drinks in Stadium are cooled with
Texas Ice "Sized Ice"

**TEXAS ICE & FUEL
COMPANY**

6301 Harrisburg

WAYside 2154

The Rice Athletic Association Would Appreciate Your Patronizing Our Advertisers

☆ *The Southwest's*
Finest . . .
 and reasonable, too!

WELDON *Cafeteria*
 4916 South Main

- Open Daily—11:00 a.m. through 8:30 p.m.
- Two Free Parking Lots Adjoining

South End Building Materials Co.

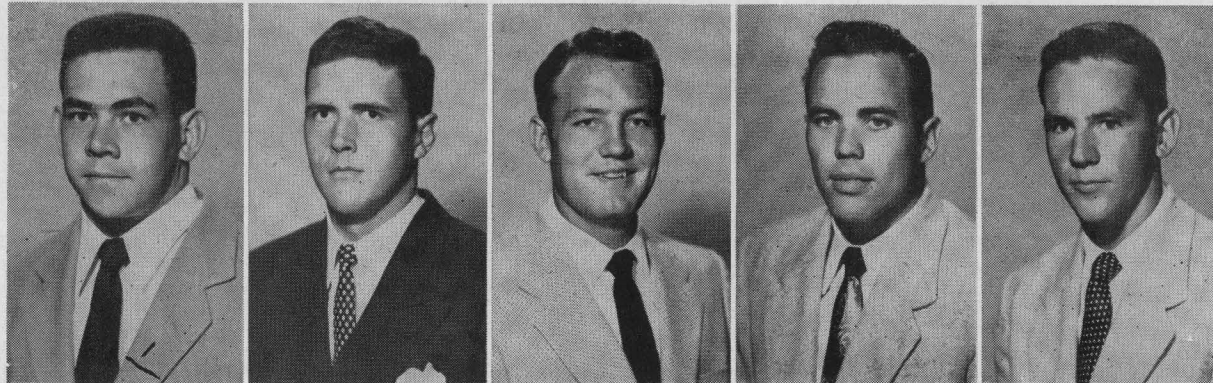
READY MIX CONCRETE

SAND — GRAVEL — CEMENT

South Houston Plant
 5102 Galveston Road
 Phone MI-3328

Deer Park Plant
 Deer Park, Texas
 Phone GR-9-2251

Kirby Drive Plant
 4830 Kirby Drive
 Phone LY-9131



77—Dan Winship

78—Richard Chapman

79—Buddy Edwards

80—Jack Day

81—Bill Fisk



WITHIN REACH!

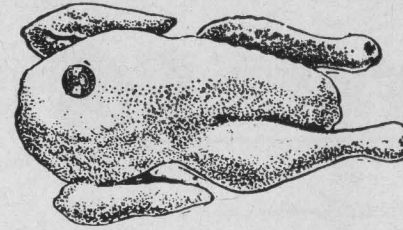
the **RIGHT** way to
 plan a play...
 or a trip

A coach designs every play to go all the way . . . the same as today's bus traveler does when he chooses CONTINENTAL TRAILWAYS thru bus service between many of the metropolitan centers of America. Whether your trip be to the next town, or across the nation, make your first choice Continental!

And for weekend football trips, charter a big Continental Silverliner and follow your team wherever they play.

CONTINENTAL TRAILWAYS

"YOUR HIGHWAY HOST FROM COAST TO COAST"



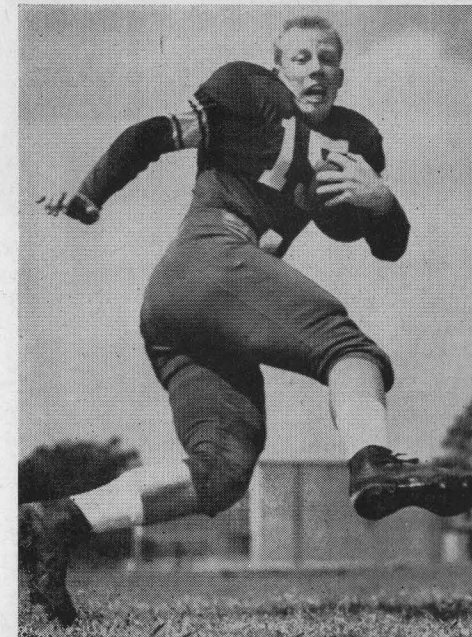
Frederick's Best Tagged Fryers
 FRESH, PLUMP, CLEAN
 They Sell Themselves

FREDERICK POULTRY & EGG CO.

Vernon C. Fredericks, Sr., Pres.-Mgr.

1817 CENTER • PReston 5195

THREE SENIOR OWL BACKS



Dickie Bob Haddox



Bill Frazier



Billy Ed Daniels

At the games it's . . .

**JASMINE FRANKS AND
 HAM SANDWICHES**

(Always Government Inspected)

HOUSTON PACKING COMPANY • 3301 NAVIGATION • PReston 2361

The Best **FRIED CHICKEN** in Town . . .

Famous throughout the Southwest for its tenderness and flavor. Fast service, low prices. Box orders to take out at no extra cost.

6441 SOUTH MAIN in HOUSTON



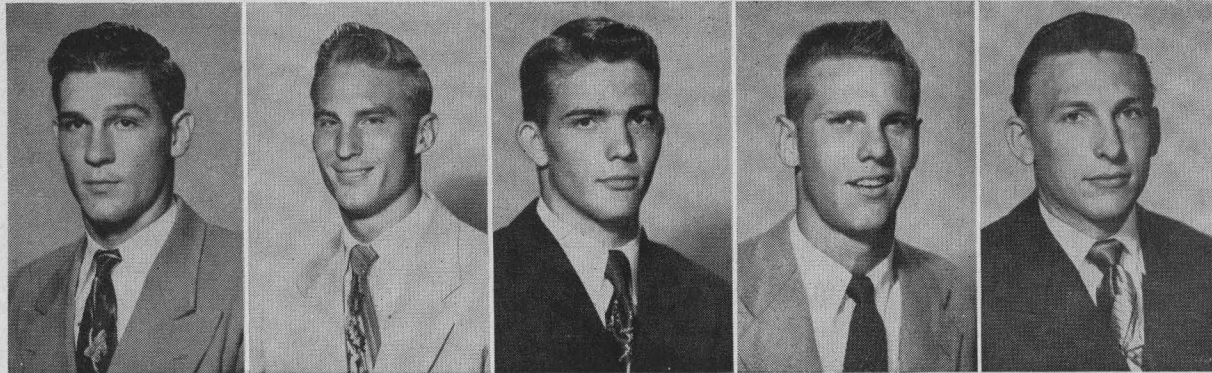
The Rice Athletic Association Would Appreciate Your Patronizing Our Advertisers

PEIDIEN IRON & STEEL CO.

ESTABLISHED 1890

WHOLESALE

HOUSTON, TEXAS



82—R. E. Wortham 83—R. J. Schroeder 84—James Heflin 85 "Chuck" Stephenson 86—LaDon Cox

Listen to the **SCORES** right after the game on **KPRC** brought to you by the

MING PALACE

And if you want to make a score, **DAD**, treat the family to **GOOD** Chinese and American **FOOD** tonight at the

MING PALACE
In the River Oaks Shopping Center

The House of Good Food

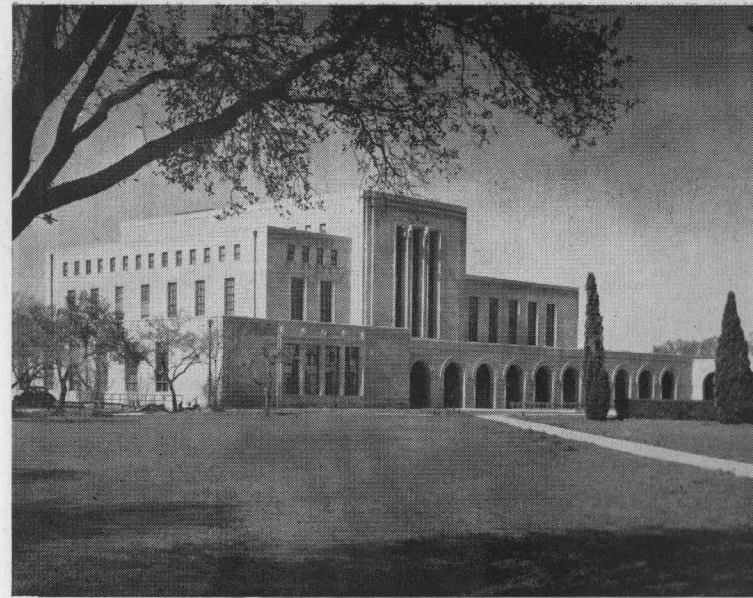
for . . .

Office Forms • Folders
Booklets • Color Printing
Letterpress and Offset
One-Time Carbon Forms
Continuous • Fanfold
Register Forms

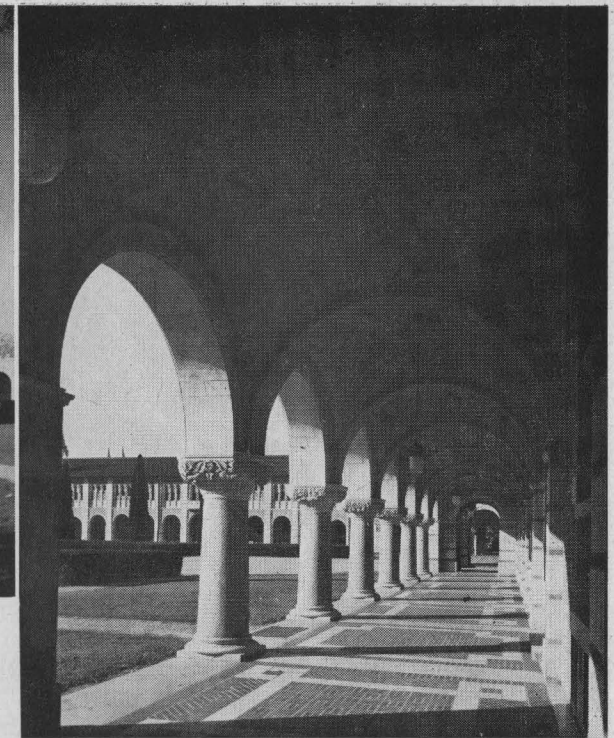


THE REIN CO.

Victor 2611



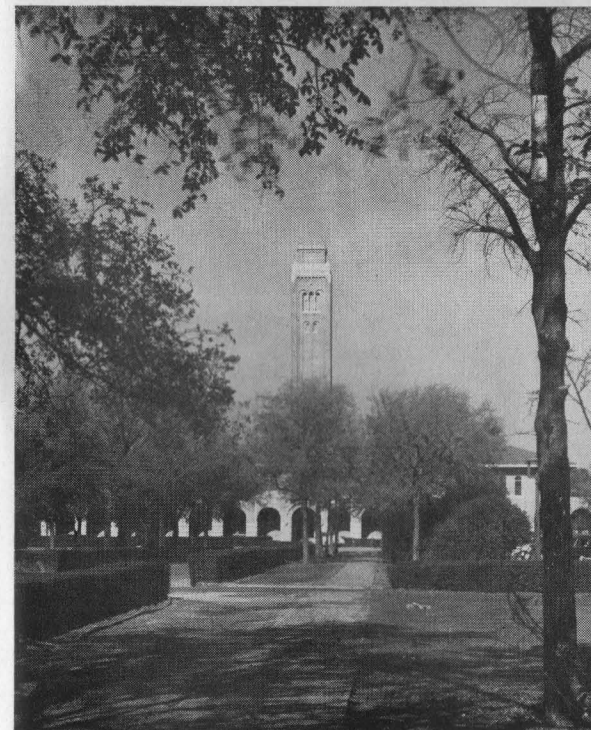
Fondren Library



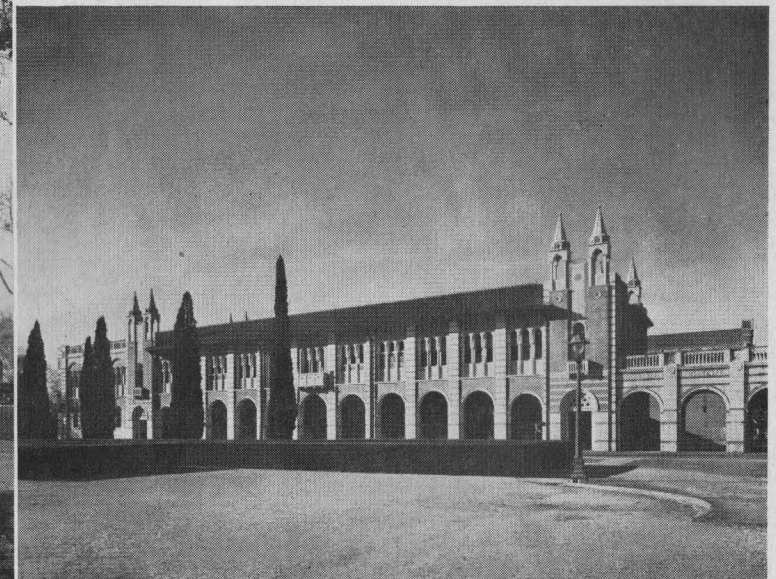
Cloisters of Lovett Hall

Campus Scenes

OF THE RICE INSTITUTE



Engineering Building and Campanile



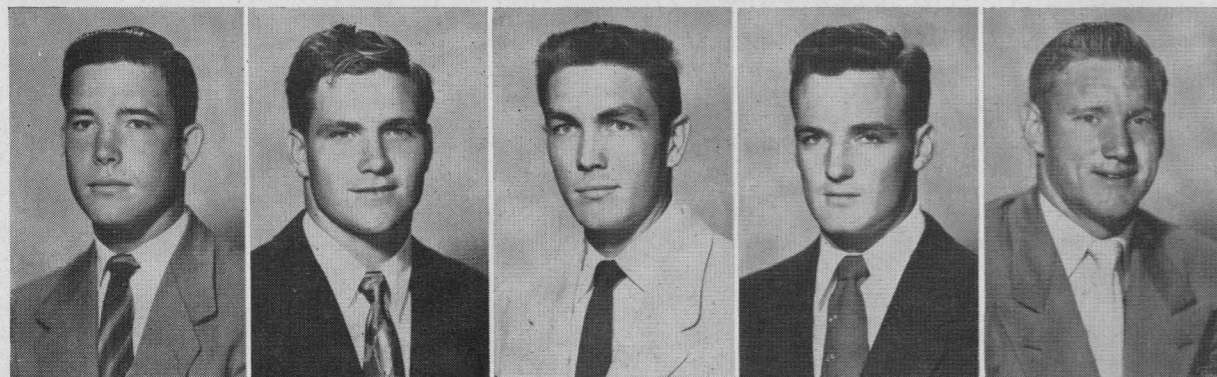
Physics Building

The "Fresh Up"
Family Drink!



You like it...
it likes you

BUY A CASE TODAY!



87—Murff Bledsoe

88—Sammy Ward

89—Blois Bridges

90—Lamoine Holland

91—Tommy Wilson

CHAMPIONSHIP AND BOWL RECORD OF THE RICE OWLS

Rice Institute has fielded a football team for forty years, and in that time the Owls have provided many thrills for grid fans of the Southwest and the nation.

The Owls have played from coast to coast with intersectional competition against teams representing some of the country's finest schools.

Many honors have come the way of Rice teams in the past. The Owls have won the Southwest Conference championship on three occasions—in 1934, 1937, and 1949—and shared the title with Arkansas in 1946.

Rice has been represented in three major bowl games, and the Owls were victorious on each occasion. The 1937 team beat Colorado 28-14 in the Cotton Bowl classic, the 1946 club stopped Tennessee 8-0 in the Orange Bowl, and the 1949 team trimmed the North Carolina Tarheels 27-13 in the Cotton Bowl.

In addition, many other honors have come the way of Rice players and coaches. Several players have been named to All-American teams, and a host of Owls have been accorded All-Southwest Conference honors.

Special honors of last year saw end Bill Howton selected on many All-American teams and invited to play for the College All-Stars, while along with teammate end Sonny McCurry he played under Rice coach Jess Neely in the East-West Shrine game for the benefit of crippled children last December.

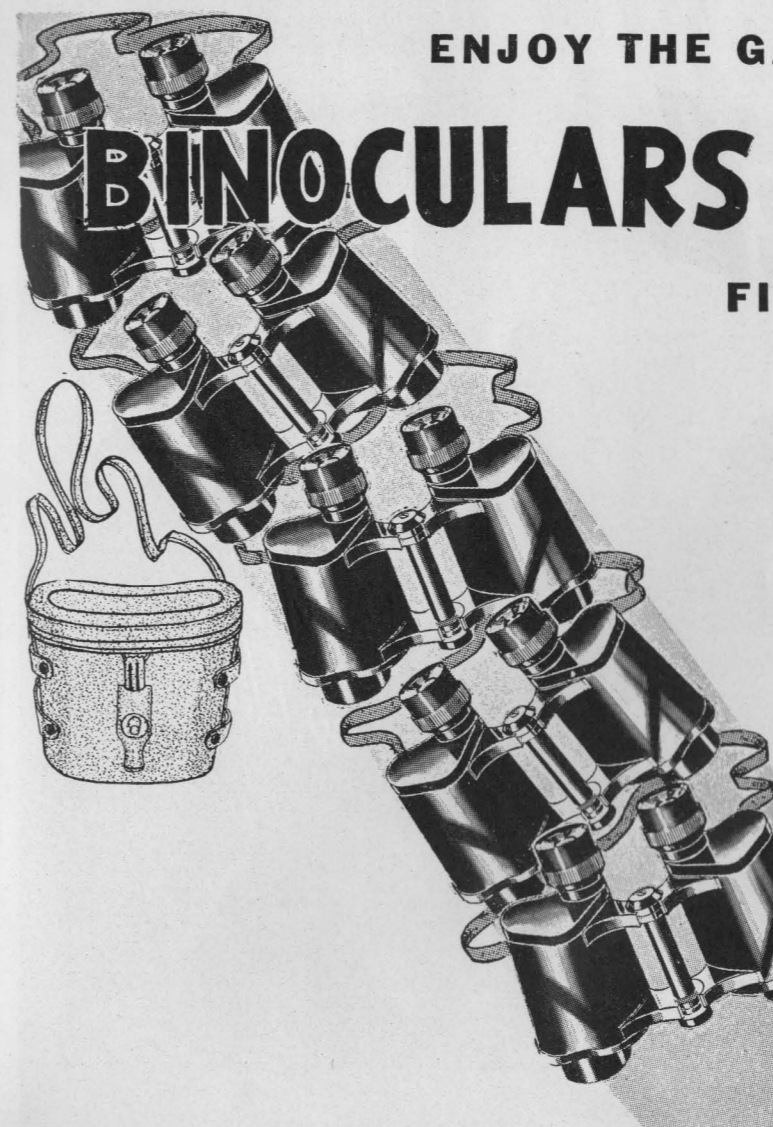
Represented for National Advertising by DON SPENCER COMPANY, INC., 271 Madison Ave., New York 16, N.Y.

ENJOY THE GAME MORE WITH

BINOCULARS

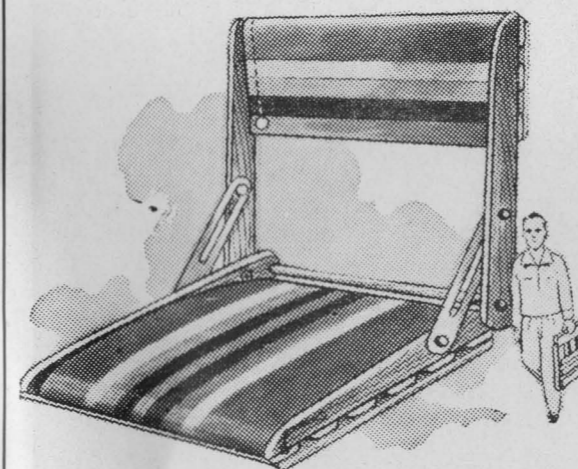
And

FIELD GLASSES



Holt's carry a complete line of fine nationally known binoculars and field glasses, all sizes, all prices.

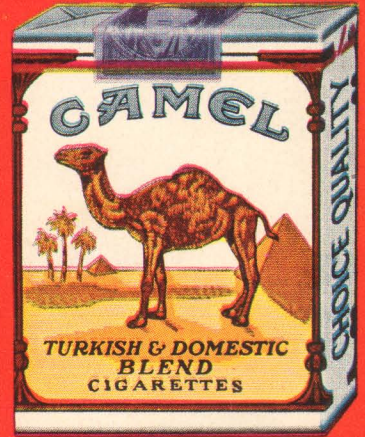
Come in our store at your first opportunity. Visit our camera shop and let us show you these fine glasses. . . .



"Tak-Along" stadium seat and backrest, fine hardwood construction, kapok seat and back, durable fancy striped canvas, hours of comfort.



"I'd walk a mile for a
CAMEL"



*So Mild—
So Flavorful!*

