



# The WISCONSIN Game

RICE CAMPUS ☆ NOVEMBER 1, 1952

OFFICIAL PROGRAM — TWENTY FIVE CENTS





DOROTHY COLLINS,  
"The Sweetheart of Lucky Strike,"  
says:

Be Happy-  
**GO LUCKY!**

**LUCKIES  
TASTE  
BETTER!**



**L.S./M.F.T.-Lucky Strike Means Fine Tobacco**

COPR., THE AMERICAN TOBACCO COMPANY

**ONLY ONE\*  
CAN BE  
BEST**

\*Taste Tru-Ade  
and judge for yourself



THE  
*Natural*  
SOFT DRINK

## **SOUTH TEXAS NATIONAL BANK**

Progressive Banking Service Since 1886

213 MAIN STREET • HOUSTON, TEXAS  
MEMBER FEDERAL DEPOSIT INSURANCE CORPORATION



*Satisfy Your Hunger at*



# **Bill Williams**

6515 SOUTH MAIN  
OPPOSITE RICE INSTITUTE  
GOOD FOOD TO FIT YOUR APPETITE AND YOUR POCKETBOOK

Represented for National Advertising by DON SPENCER COMPANY, INC., 271 Madison Ave., New York 16, N.Y.



BOARD OF GOVERNORS OF THE RICE INSTITUTE

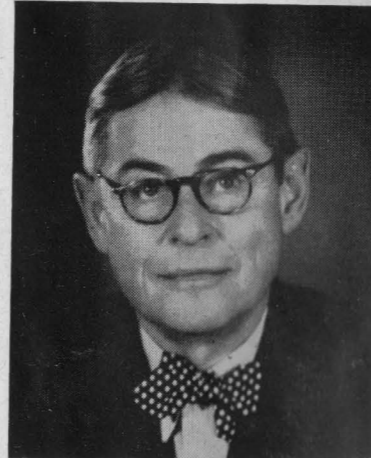
TRUSTEES



GUS S. WORTHAM



GEORGE R. BROWN  
Chairman



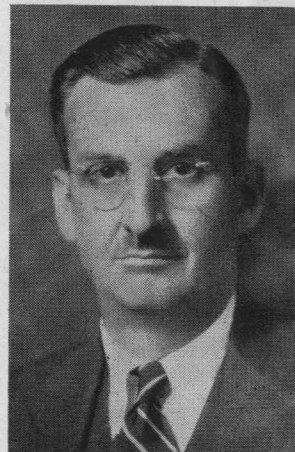
LAMAR FLEMING, JR.



WILLIAM A. KIRKLAND



J. NEWTON RAYZOR



DR. FREDERICK R. LUMMIS



JOHN S. IVY

TERM MEMBERS

HERBERT ALLEN  
ROBERT P. DOHERTY

FRANCIS T. FENDLEY  
H. MALCOLM LOVETT

ROBERT H. RAY  
HARMON WHITTINGTON



DR. WILLIAM V. HOUSTON  
President, The Rice Institute

Just forty years ago the first class of freshmen entered the Rice Institute. That first freshman class organized a football team and played a schedule involving some satisfying victories along with some overwhelming, if not spectacular, defeats.

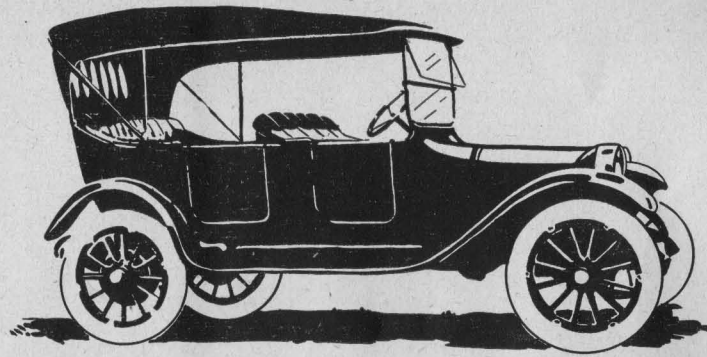
Today the Rice Institute welcomes you, its guests, to a stadium which bears little resemblance to the ball park in which our first games were played. Our physical facilities have grown with the city of Houston and because of the interest and help of its citizens.

You are all invited to spend a little time looking around the rest of our campus. Some of you may not have seen the Fondren Library, Wiess Hall, or the Abercrombie Laboratory. We hope you will visit them.

In particular, we hope you enjoy the game you have come to see. May you not be disappointed in its outcome more than half the time.

WILLIAM V. HOUSTON

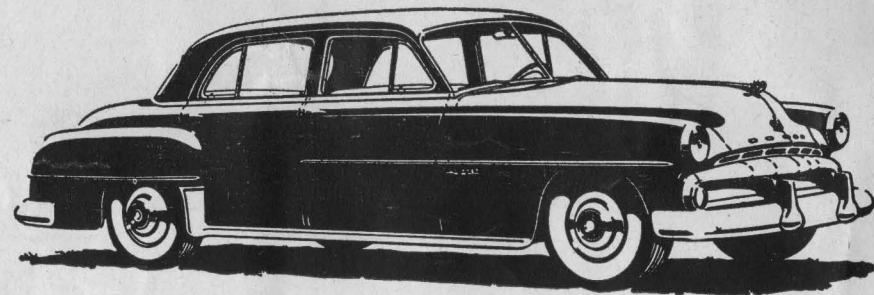




**38 YEARS**

**of automotive service to Texans**

Choose a beautiful new DODGE  
from a dependable dealer . . .



**Jackson Motors, Ltd.**

ALBERT H. BERRY

JACK W. JACKSON

*Texas' Oldest Dodge and Plymouth Dealer*

2404 South Main

HOUSTON

The Rice Athletic Association Would Appreciate Your Patronizing Our Advertisers



Best wishes, always  
to the BLUE and GRAY!

**Cameron**

**IRON WORKS, INC.**

HOUSTON



**THE RICE INSTITUTE ATHLETIC COACHING STAFF**



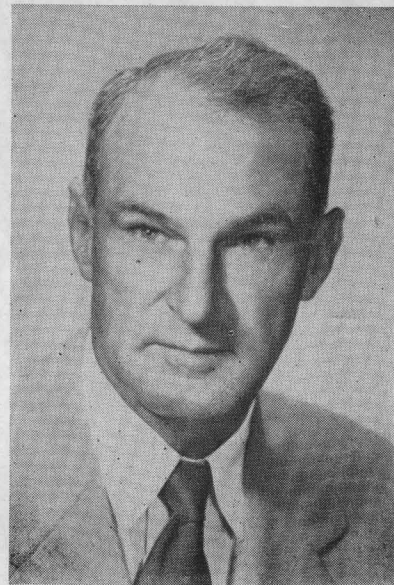
**JOE DAVIS**  
Line Coach

**CECIL GRIGG**  
Backfield Coach

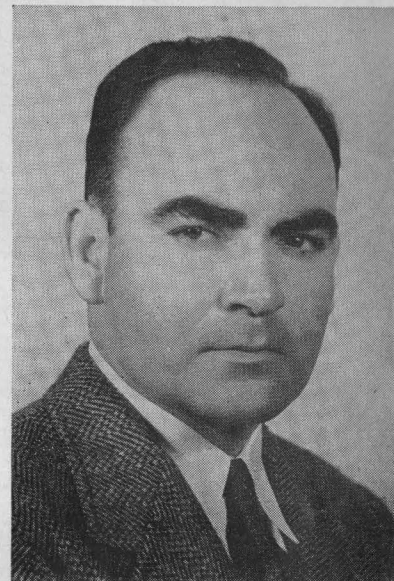
**A. M. BALE**  
End Coach

**DELL MORGAN**  
Asst. Coach

**CHARLES MOORE**  
Freshman Football Coach  
Freshman Basketball Coach



**JESS NEELY**  
Head Football Coach  
Athletic Director



**EMMETT BRUNSON**  
Track Coach  
Bus. Mgr. of Athletics



**HAROLD STOCKBRIDGE**  
Asst. Coach

**DON SUMAN**  
Basketball Coach

**EDDIE WOJECKI**  
Head Trainer

**CARROLL MARTIN**  
Office Manager

**BILL WHITMORE**  
Sports News Director

OFFICIAL WATCH FOR THIS GAME

*Longines*  
*The World's Most Honored Watch*

ACCEPTED AS OFFICIAL WATCH  
FOR TIMING  
CHAMPIONSHIP SPORTS EVENTS  
IN ALL FIELDS ALL OVER THE WORLD



*Product of*  
*Longines-Wittnauer Watch Company*

As constructors of the Rice Stadium, we take great satisfaction from the contests played here—not from the final score, but from the knowledge that on this field there is rivalry without rancor, defeat without dishonor, and victory without tyranny.

In this great game look not for the shoddy, the dishonest, the shirker and the fraud, for here he cannot survive.



**Brown & Root, Inc.**

*Engineers — Constructors*  
HOUSTON



# TOUCHDOWN!



Touchdown or take off with a Beech and you'll know you've got a champion on your hands. In Beech's Executive Transport and Bonanza models you'll find the World's finest airplanes designed specifically to meet the requirements of leading executives who appreciate the importance of air travel in modern industry.

To match these unexcelled planes, J. D. Reed has built a superior sales and service organization in keeping with the high standards demanded by those who accept only the best.

**J.D. REED CO., Inc.**  
SALES SERVICE  
**Beechcraft**  
**DISTRIBUTOR**

  
HOUSTON  
Municipal Airport

# TODAY'S GAME

BY BILL WHITMORE  
Rice Sports News Director

The first visit of a Big Ten team to Houston in the appearance of the University of Wisconsin—Homecoming Day for Rice Institute—the crowning of the Homecoming Queen—special ceremonies honoring the 1937 Rice Owls who won the Southwest Conference championship and Cotton Bowl game victors over Colorado—an exhibition of the famed Pensacola, Florida, Naval Aviation Cadet crack drill team.

All of these events add up to a gala occasion here at Rice Stadium this afternoon. It should be a fine show, with the football game between the Owls and Badgers the feature.

Rice enters the contest a decided underdog to the powerhouse eleven from Wisconsin coached by Ivan Williamson, a team still very much in the running for the Big Ten title and a trip to the Rose Bowl. The Badgers have lost to Ohio State in their league and to U. C. L. A. last Saturday, the team that trimmed Rice earlier in the campaign. But the husky visitors have one sided victories over Iowa and Marquette, and ranked as tops in the nation in early October after polishing off defending champion Illinois 20-6.

Rice's defensive stalwarts get perhaps their sternest test of the year, for the Badgers are loaded

with fine offensive performers. For instance, quarterback Jim Haluska is second in the nation in passing with 71 completions on 124 attempts with 8 TD passes to his credit. Alan Ameche set a Big Ten rushing record with his driving runs from fullback last year. Jerry Witt was one of the nation's top scorers. Harland Carl, the team's top running back, is rated very dangerous and his absence because of an injury last week hurt the Badgers against U. C. L. A. He's due to play today.

Rice coach Jess Neely believes his team is ready to play its best game of the year against the powerful club from the north land. Dan Drake at quarterback, halfbacks Morris Stone, Billy Ed Daniels, Carl Johnson, and others give the Owls some offensive threats. "Kosse" Johnson returns to full duty after being restricted only to punting duty for two games.

The defensive crew with the tough assignment is headed by such men as Don Rhoden, who roundly outplayed U. C. L. A.'s mighty Donn Moomaw earlier in the year, another fine linebacker in Leo Rucka, husky Richard Chapman, John Hudson, Max Schuebel, and talented sophomore Kenny Paul.

It should be a fine game with interesting pregame and halftime activities to give Rice Stadium visitors a pleasant afternoon of entertainment.

## W. Cecil Sisson Mortgage Company

*Complete Financial Service*

*Roy Bean, Loan Officer*

*402 Rusk Building*

Represented for National Advertising by DON SPENCER COMPANY, INC., 271 Madison Ave., New York 16, N.Y.



Spring Air

"Lastic Foam"

MATTRESSES and BOX SPRINGS

America's Finest Bedding Equipment

PARKER BEDDING COMPANY

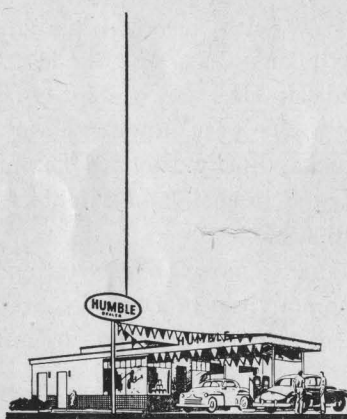
FREDERICK PARKER

HOUSTON

JOEL PARKER



11—Horton Nesrsta 15—Dickie Bob Haddox 16—Bobby Warren 19—Bob Garbrecht 20—Oree "Buzzy" Bryan



Welcome to  
\* **FOOTBALL**  
**HEADQUARTERS**



\*That means:

welcome under  
the Humble sign in  
your neighborhood.

You're always welcome under the Humble sign—every day in the year. But right now you'll find your neighborhood Humble dealer's station gaily decorated with Southwest Conference school colors in honor of the season, and provided with timely information about Humble's football broadcasts.

Come the weekends, your neighbor under the Humble sign invites you to be his guest at Humble's broadcasts of the games you can't attend. Enjoy this neighborly hospitality right in your own living room—tune in the Southwest Conference game, or games, of your choice.

When you drive to a game (and plan to see as much football as you can; there's no substitute for the glamor and excitement you find only at the stadium) stop for service at the Humble signs along your route . . . Welcome to Football Headquarters!

**HUMBLE**

**HUMBLE OIL & REFINING CO.**

OFFICIAL SIGNALS ADOPTED BY NATIONAL COLLEGIATE ATHLETIC ASSOCIATION



1. OFFSIDE



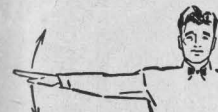
2. ILLEGAL POSITION OR PROCEDURE



3. ILLEGAL MOTION OR SHIFT



4. DELAY OF GAME



5. PERSONAL FOUL



6. ROUGHNESS AND PILING ON



7. CLIPPING



8. ROUGHING THE KICKER



9. UNSPORTSMANLIKE CONDUCT



10. DEFENSIVE HOLDING



11. ILLEGAL USE OF HANDS AND ARMS



12. INTENTIONAL GROUNDING



13. ILLEGALLY PASSING OR HANDING BALL FORWARD



14. FORWARD PASS OR KICK CATCHING INTERFERENCE



22. TIME-OUT



21. SAFETY



20. TOUCHDOWN OR FIELD GOAL



19. BALL DEAD; IF HAND IS MOVED FROM SIDE TO SIDE; TOUCHBACK



18. CRAWLING, HELPING THE RUNNER OR INTERLOCKED INTERFERENCE



17. INCOMPLETE FORWARD PASS, PENALTY DECLINED, NO PLAY OR NO SCORE



16. BALL ILLEGALLY TOUCHED, KICKED OR BATTED



15. INELIGIBLE RECEIVER DOWN FIELD ON PASS

For the best signal in TV...

see



**BLACK-DAYLITE TELEVISION**



Huge screen, beautiful compact cabinet and on-the-spot picture realism—it's G-E Model 21T4. Go into a huddle with your dealer—fast. Ask him to demonstrate the features.

When you can't get to the game, the next best thing is G-E Model 21T4!

GENERAL ELECTRIC SUPPLY COMPANY  
1312 LIVE OAK  
HOUSTON, TEXAS



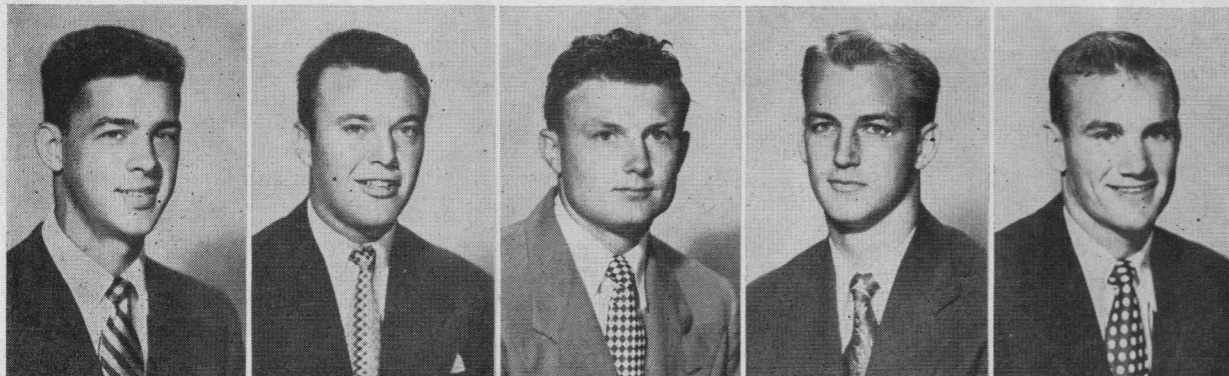


FOLLOW YOUR TEAM TO THE GAME

*Fly*

**TRANS-TEXAS**  
 *Airways*

CALL TRANS-TEXAS  
OR YOUR LOCAL  
TRAVEL AGENT



21—Atchley Proctor    22—Billy Ed Daniels    23—Bill Gaskamp    24—Dan Drake    25—Buddy Grantham

**We are Proud . . .**

Of our many young depositors who are starting now to acquire the independence of a savings account—the satisfaction of planned financing.

For over 30 years it has been our policy to extend to our customers a friendly understanding of their financial responsibilities. We invite you to drop by 712 Main to talk with us about our Free Services, Savings Plans, Loan Plans, Trust Facilities and Normal Charge Services.

Member Federal Deposit Insurance Corporation

**National Bank of Commerce**  
OF HOUSTON  
"The Bank of Courtesy"



**WINNING COMBINATION . . .**

Dependability and economy are the star performers on the United Gas service team. Dependability plays an important part throughout every season of the year . . . making it possible for your family to constantly enjoy the comfort and convenience offered by fine gas appliances. And because your natural gas service is so economical, it represents the wisest fuel investment you can make in your home, your business or your industry. United Gas is proud to have the opportunity of making this important gas service available to you and your neighbors.

For The Best In Gas Service  
Call . . . Blackstone 0271



**UNITED**

**GAS**

THE BIGGEST BARGAIN IN YOUR HOME TODAY — PHONE 211-1111  
87 Years of Dependable GAS Service to Houstonians

The Rice Athletic Association Would Appreciate Your Patronizing Our Advertisers



*For the*  
**All-American  
Week-End**



Make The Shamrock your headquarters hotel — where gracious hospitality and a warm welcome await you. You'll enjoy the comfort, the faultless service, the superb cuisine, the luxurious facilities that only The Shamrock affords its guests.

**Cavalcade of Stars**

There's always exciting big-name entertainment in The Shamrock's famed Emerald Room . . . stars of stage, radio and motion pictures appear continually, in person, in the Cavalcade of Stars. You'll enjoy your "night out" in The Shamrock's supper clubs.

**GLENN McCARTHY, President**

**M. JACK FERRELL, Managing Director**

Represented for National Advertising by DON SPENCER COMPANY, INC., 271 Madison Ave., New York 16, N.Y.



**Foote's Cafeteria**

*Houston's Finest Suburban Dining Room*

2 Blocks West of Stadium

Continuous Service 11:00 A.M. to 8:30 P.M.

2407 RICE BOULEVARD

7 Days a Week

**CONSOLIDATED CHEMICAL INDUSTRIES INC.**

**Heavy Chemicals for Industry**

640 MELLIE ESPERSON BLDG.

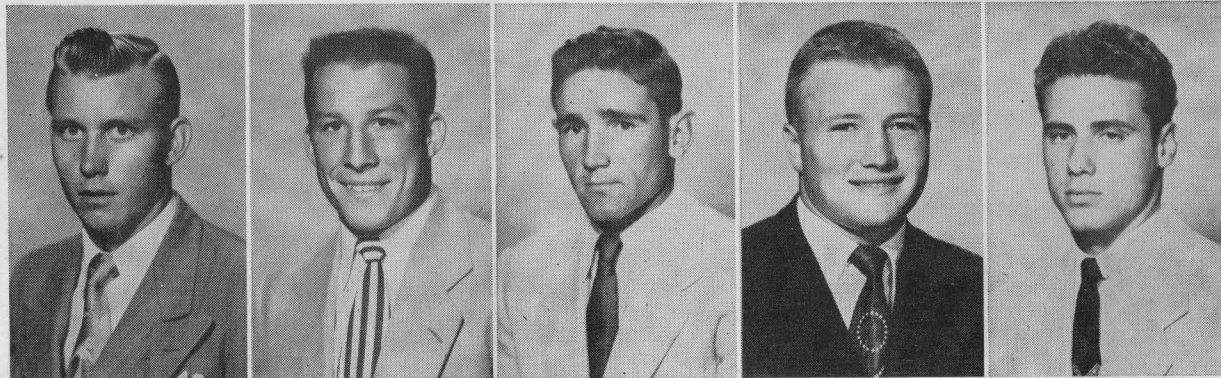
HOUSTON 2, TEXAS

NAME BRAND  
**Sporting Goods**

OPEN DAILY 9 A.M.-6 P.M.

**HOUSTON SPORTS SHOP**

4717 Main Street, Houston • Telephone KE-8660, JU-2131



26—Leroy Fenstemaker

31—Morris Stone

35—Bill Frazier

36—Gordon Kellogg

39—Don Costa



40—Tommy Lynch

42—Don Whittaker

43—Carl Johnson

45—David Johnson

47—Dicky Moegle



You,  
Your Great Southerner  
and Life Insurance

are an unbeatable combination for  
winning financial independence for  
your family and yourself.

**GREAT SOUTHERN**  
*Life Insurance Company*



4310 Dunlavy • Houston 6, Texas



**EVERYBODY'S  
YELLING FOR**

**THE BEER WITH THAT  
SMOOTH, MILD FLAVOR**

Yes Sir — here's a beer to cheer — Southern Select! The beer with that smooth, mild flavor! It has the extra point that makes the difference — It's Pilsenized — light and bright — always tastes just right! One taste of this wonderful golden dry brew and you'll yell for the "Sparkle beer", too!

ITS PILSENIZED — HAS SPARKLE

**Southern Select** BEER

GALVESTON-HOUSTON BREWERIES, INC., GALVESTON, TEXAS



Enjoy  
the Finest Steaks  
Obtainable

**YOU SELECT** the steak of your choice from our gleaming Steak Bar;

**YOU BRAND IT** as you wish it prepared: "R" for rare, "M" for medium, etc.

**WE COOK IT** on our grill, or our brand new charcoal broiler, as you prefer.

ERNEST COKER'S

**Ye Old College Inn**

6545 SOUTH MAIN

LY-6484

Serving Hours: 5 p.m. to 11 p.m. daily  
Noon til 9 p.m. Sunday

CLOSED TUESDAY

### Rice Freshman Football

Two big home games here at the Rice Stadium feature the five-game schedule of the 1952 Rice Institute freshman football team. On Friday night, October 17th, the Owlets play the S.M.U. Colts and on Friday night, October 24th, they entertain the University of Texas first year team.

Several outstanding high school players of 1951 are among the squad learning the intricacies of the Rice grid system under the tutelage of head coach Charley Moore and Harold Stockbridge.

Tickets to the two big home games of the freshman team may be purchased at the ticket window at the Rice Gymnasium.

Here is the complete schedule for the Owlets for '52:

- 3 October (Friday) 2 p.m.  
T.C.U. Freshmen at Fort Worth
- 10 October (Friday) 8 p.m.  
Del Mar Junior College at Corpus Christi
- 17 October (Friday) 8 p.m.  
S.M.U. Freshmen at Rice Stadium
- 24 October (Friday) 8 p.m.  
Texas Freshmen at Rice Stadium
- 6 November (Thursday) 2 p.m.  
Texas A. & M. Freshmen at College Station

# UNIVERSAL

## PACKING & GASKET CO.

Houston Owned  
and Operated



Home of Universal, where packings and gaskets are manufactured for every industrial need.



"The Official Watch for Timing this Game is Longines . . . The World's Most Honored Watch"

# Refreshing

DRINK

**Coca-Cola**  
REG. U.S. PAT. OFF.

### RICE INSTITUTE (Offense)

#### BY POSITIONS

LE Bridges 89	LT Timmons 69	LG Little 61	C Moore 56	RG Lee 62	RT Crockett 71	RE Day 80
			QB Drake 24			
	LH Daniels 22				RH Stone 31	
			FB D. Johnson 45			

### UNIVERSITY OF WISCONSIN (Defense)

#### BY POSITIONS

LE Wuhrman 85	LT Hoegh 70	CG Kennedy 67	RT Martin 77	RE Voss 90
	LLB Dornburg 18	CLB Dixon 31		RLB O'Brien 62
LDH Shwaiko 19				RDH Burks 15
		S Hable 21		

See line-ups on page 20 for Wisconsin offense and Rice defense



COPYRIGHT 1952, COCA-COLA COMPANY

HOUSTON COCA-COLA BOTTLING COMPANY ★ 2800 BISSONNET



# FOR YOU

# FIRST PREMIUM QUALITY CIGARETTE REGULAR AND KING-SIZE!

## WISCONSIN ROSTER

No.	Name	Pos.	Age	Ht.	Wt.
12	Haluska, James D.	B	19	5-10	165
15	Burks, Archie Roy	B	21	5-8	165
16	Canny, Thomas F.	B	21	5-11	175
18	Dornburg, Roger M.	B	20	5-8	190
19	Shwaiko, Paul	B	18	5-9	185
21	Hable, Burton F.	B	21	6-3	172
22	Wilson, Glen A.	E	20	6-1	183
23	Torresani, John A.	B	22	5-9	165
24	Vergetis, Gust G.	B	20	5-9	170
26	Bonofiglio, Mario A.	B	19	5-9	163
31	Dixon, John T.	B	20	6-0	179
33	Lamphere, Robert G.	B	21	6-2	198
35	Ameche, Alan D.	B	19	6-0	205
40	Gingrass, Robert J.	B	19	5-11	182
41	Carl, Harland I.	B	20	5-11	176
43	Proctor, Thomas L.	B	21	5-11	187
44	Hansen, Wayne N.	B	22	5-11	170
45	Bratt, Clarence M.	B	19	6-0	175
46	Hutchinson, Bill E.	B	23	5-10	160
49	Witt, Gerald O.	B	20	5-10	184
50	Craine, James E.	C	22	6-2	205
52	Cwayna, Michael B.	B	20	6-1	201
53	Simkowski, George R.	C	21	5-11	189
54	Messner, Gary R.	C	18	5-11	185
59	Wohlleber, Richard H.	B	20	5-11	190
60	Amundsen, Norman R.	G	19	5-11	195
61	Brandt, William F.	G	19	5-10	185
62	O'Brien, George E.	G	21	5-10	187
63	Stensby, Clarence F.	G	19	5-11	187
64	Steinmetz, George P.	G	21	6-3	192
65	Gulseth, Wendell O.	B	20	6-0	210
66	Roberts, Ronald D.	G	22	6-0	190
67	Kennedy, Robert A.	G	21	5-11	195
68	Prchlik, Arthur R.	T	21	6-0	190
69	Durkin, Terry	G	25	5-10	195
70	Hoegh, Mark W.	G	19	5-9	195
71	Suminski, David M.	T	21	5-10	198
73	Ronzia, Edward	T	18	6-0	200
74	Ursin, Donald J.	T	19	6-0	186
75	Berndt, Charles W.	T	22	6-3	259
77	Martin, Carl R.	T	21	5-11	218
81	Wimmer, Hugo F.	E	21	6-2	195
82	Temp, James A.	E	18	6-2	205
85	Wuhrman, Jerald L.	E	20	6-0	183
86	Esser, Norbert J.	E	20	6-2	188
87	Locklin, Ronald E.	E	18	6-1	177
88	Andrykowski, Ervin M.	E	22	6-1	185
89	Peters, Kenton A.	E	21	6-1	191
90	Voss, Donald P.	E	19	6-3	185
94	Lundin, Keith E.	B	21	5-10	175
97	Sternat, Robert F.	G	21	5-11	205



## RICE INSTITUTE SQUAD

No.	Name	Pos.	Age	Ht.	Wt.
11	Horton Nesrsta, 54	B	21	5-9	149
15	Dickie Bob Haddox, 53	B	20	5-9	162
16	Bobby Warren, 55	B	20	5-7	165
19	Bob Garbrecht, 54	B	20	6-1	200
20	Oree "Buzzy" Bryan, 55	B	20	6-1	185
21	Atchley Proctor, 55	B	18	6-0	170
22	Billy Ed Daniels, 53	B	21	6-0	168
23	Bill Gaskamp, 54	B	20	5-10	167
24	Dan Drake, 54	B	21	6-2	190
25	Buddy Grantham, 54	B	19	6-2	175
26	Leroy Fenstemaker, 54	B	20	6-2	195
31	Morris Stone, 55	B	19	5-9	167
35	Bill Frazier, 53	B	21	5-10	165
36	Gordon Kellogg, 55	B	19	5-10	171
39	Don Costa, 55	B	19	6-0	194
40	Tommy Lynch, 55	B	20	6-0	182
42	Don Whittaker, 54	B	19	6-1	192
43	Carl Johnson, 54	B	19	5-11	179
45	David Johnson, 54	B	20	6-0	176
47	Dicky Moegle, 55	B	18	6-0	167
49	Gino Biasatti, 55	B	20	5-10	185
50	Ronald Lassiter, 55	C	20	6-2	202
54	Don Rhoden (c-c), 53	C	19	5-11	200
55	Leo Rucka, 54	C	21	6-2	204
56	Bobby Moore, 53	C	22	6-2	205
59	Jimmy Jax, 55	C	19	6-2	200
60	Kenny Paul, 55	G	19	5-11	195
61	Gene Little, 53	G	23	6-0	205
62	LaMar "Skip" Lee, 54	G	20	6-0	197
63	Jerry Fitzpatrick, 55	C	20	6-1	202
64	Walter Schleyer, 54	G	20	5-11	190
65	Dan Hart, 54	G	20	5-10	195
66	Dan "Hans" Wagner, 55	G	21	6-1	205
67	W. C. Treadway, 54	G	20	6-1	200
68	Larry Lundstedt, 55	G	18	5-11	188
69	James Timmons, 53	G	22	6-1	198
70	John Hudson, 54	T	19	6-0	212
71	Bill Crockett (c-c), 53	T	20	6-2	206
72	Max Schuebel, 54	T	20	6-1	210
73	LaVon Cox, 55	T	19	6-0	230
74	Robert Cashion, 55	T	20	6-1	217
75	Layton Golemon, 55	T	18	6-4	210
76	James Ellis, 55	T	19	6-0	200
77	Dan Winship, 55	G	19	6-0	215
78	Richard Chapman, 54	T	19	6-6	218
79	Buddy Edwards, 54	T	21	6-2	230
80	Jack Day, 53	E	22	6-0	195
81	Bill Fisk, 54	E	21	6-0	190
82	R. E. Wortham, 55	E	19	5-11	185
83	R. J. Schroeder, 54	E	20	6-4	186
84	James Heflin, 53	E	21	6-2	188
85	"Chuck" Stephenson, 53	E	18	6-1	180
86	LaDon Cox, 53	E	19	6-0	182
87	Murff Bledsoe, 53	E	19	6-0	176
88	Sammy Ward, 54	E	20	6-0	193
89	Blois Bridges, 54	E	20	6-1	180
90	Lamoine Holland, 55	E	19	6-2	185
91	Tommy Wilson, 54	E	19	6-2	187

...Much **MILDER**

# CHESTERFIELD

LARGEST SELLING CIGARETTE IN AMERICA'S COLLEGES



DRINK  
**Coca-Cola**  
REG. U.S. PAT. OFF.

**Delicious**

**UNIVERSITY OF WISCONSIN (Offense)**

BY POSITIONS

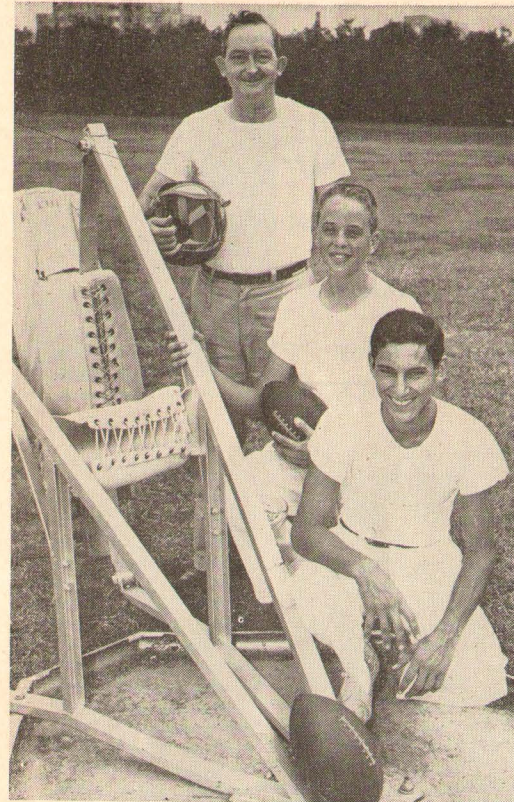
LE Peters 89	LT Prchlik 68	LG Steinmetz 64	C Simkowski 53	RG Stensby 63	RT Suminski 71	RE Temp 82
			QB Haluska 12			
			LH Hutchinson 46	RH Witt 49		
			FB Ameche 35			

**RICE INSTITUTE (Defense)**

BY POSITIONS

LE Ward 88	LT Schuebel 72	LG Chapman 78	RG Paul 60	RT Hudson 70	RE Fisk 81
			LLB Rhoden 54	RLB Rucka 55	
			LH Kellogg 36	RH Whittaker 42	
			S Nesrsta 11		

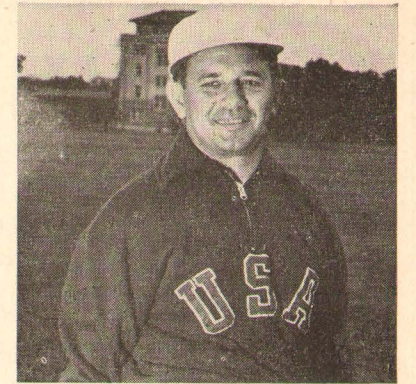
See line-ups on page 17 for Wisconsin defense and Rice offense



J. B. Sorsby, Howard Schaumburg, Louis Loeser

The man who looks after the storing, issuing, and repairing of the Owls' athletic equipment is J. B. Sorsby, an employee of the Institute for over 20 years.  
The student manager of the football team is Norman Moore, who looks after the equipment on the field, assists in detail work in the dressing room, and handles a number of duties.

**MEDICAL, TRAINING FACILITIES FOR RICE ATHLETICS**



Trainer Eddie Wojecki

The finest in medical and training care and the most modern equipment available is provided athletes in all sports at Rice Institute. This important phase of an athletic program often is overlooked by spectators, whose chief interest is in the action on the playing field. However, there are a number of persons whose services "behind the scenes" mean a great deal toward having a successful all-round athletic program.

Dr. Hugh Welch has served as team physician for many years, and with consulting physicians Dr. Jack Brannon and Dr. E. T. Smith the Rice players have the services of an excellent medical staff.

One of the busiest men on the Rice athletic scene is head athletic trainer Eddie Wojecki. His modern training quarters are where the athletes receive top care for injuries, and where the players get advice on diet and myriad subjects.

As a tribute to his ability, Wojecki received a signal honor for Rice Institute and himself last summer when he was named head trainer for the American Olympic team that competed in Helsinki, Finland.

Ablly assisting in the training room are student trainers Louis Loeser, a sophomore, and Howard Schaumburg, former Owl "mascot" and now in high school.

COMPLIMENTS

OF

**HERRIN TRANSPORTATION COMPANY**

2300 WALKER

FA-5111

**FACTS ABOUT RICE INSTITUTE**

The Rice Institute is privately endowed and non-sectarian. The Institute is named for its founder, the late William Marsh Rice of Houston. Rice Institute has a limited enrollment with a student body of about 1,500. In effect, all Rice students are on scholarships as no tuition is charged those accepted. The school's picturesque campus covers 300 acres in Houston's southwest section. A major building program has seen several million dollars in new construction on the campus. New structures include the Fondren Library, Abercrombie Engineering Laboratory, M. D. Anderson class room building, Wiess Hall, dormitory for men, and the Rice Stadium and Rice Gymnasium. The Fondren Library, one of the finest and most modern in the nation, contains about 250,000 volumes.

"The Official Watch for Timing this Game is Longines . . . The World's Most Honored Watch"



# QUINBY EMPLOYMENT SERVICE

"A Name Worth Remembering"

You can benefit from our many years experience in the personnel field Executive, Office, Sales, and Technical Personnel

Member National Employment Board, Chamber of Commerce and National Association Personnel Consultants

409 Bankers Mortgage Building

Houston 2, Texas



49—Gino Biasatti    50—Ronald Lassiter    54—Don Rhoden (c-c)    55—Leo Rucka    56—Bobby Moore



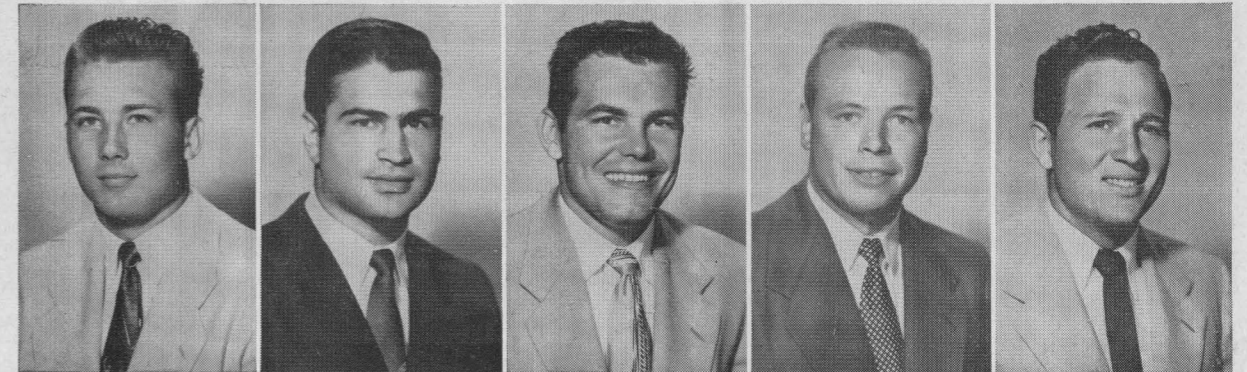
2020 Main Street

"THE BANK OF CORDIALITY"

Member Federal Deposit Insurance Corporation

BEST WISHES  
TO THE OWLS

**W. S. Bellows Construction Corp.**



59—Jimmy Jax    60—Kenny Paul    61—Gene Little    62—LaMar "Skip" Lee    63—Jerry Fitzpatrick



COMPLETE METROPOLITAN SERVICE

WITH RESIDENTIAL CONVENIENCE



*Serving Southwest Houston*

West University Place, Southside Place and Bellaire

AUTOMOBILE TELLER SERVICE

**UNIVERSITY STATE BANK**

Keystone 5574

6135 KIRBY DRIVE at AMHERST

**FIRST STATE BANK**

BELLAIRE, TEXAS

MOhawk 3413

5123 BELLAIRE BOULEVARD

MEMBER FEDERAL DEPOSIT INSURANCE CORPORATION

The Rice Athletic Association Would Appreciate Your Patronizing Our Advertisers

MAKE YOUR GOAL

**BEFORE** THE KICKOFF

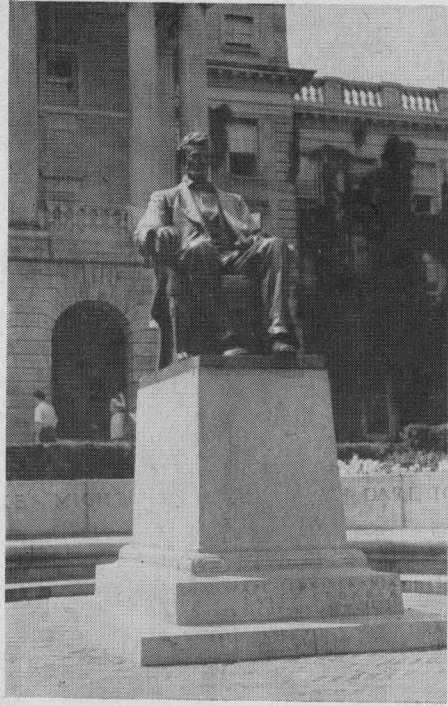
AT

*Cousin's* 4401 FANNIN

OR

**AFTER** THE FINAL GUN

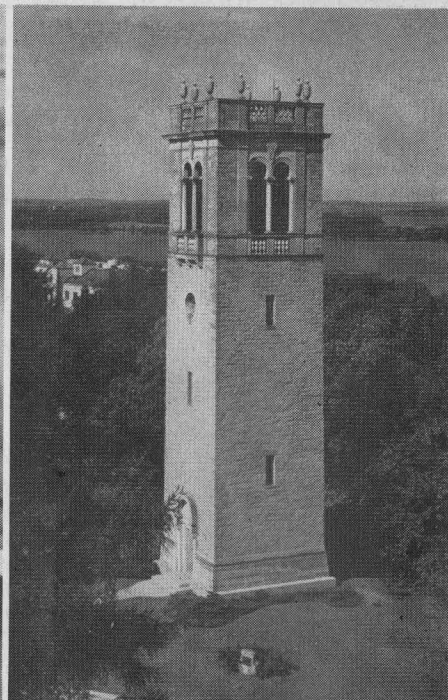




Lincoln Statue in Front of Bascom Hall



E. B. Fred  
President of Wisconsin U.



Carillon Tower

# UNIVERSITY OF WISCONSIN

## ATHLETIC STAFF



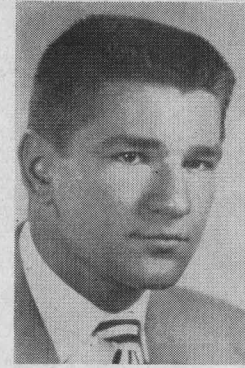
Ivan Williamson  
Head Coach



George Lanphear, Paul Shaw, Fred Marsh, Bob Odell,  
Milt Bruhn, and Ivan Williamson



Guy Sundt  
Athletic Director



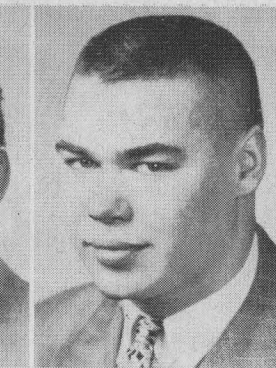
19—Paul Shwaiko



85—Jerald L. Wuhrman



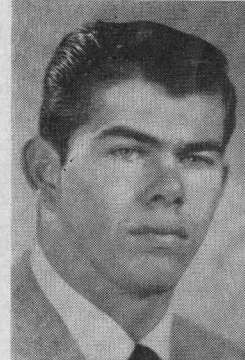
71—David M. Suminski



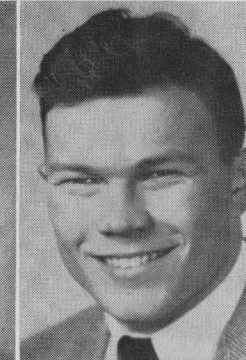
67—Robert A. Kennedy



90—Donald P. Voss



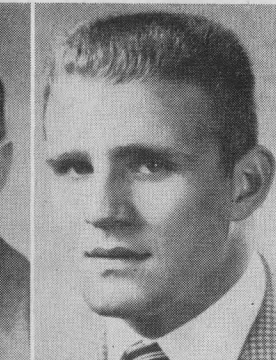
62—George E. O'Brien



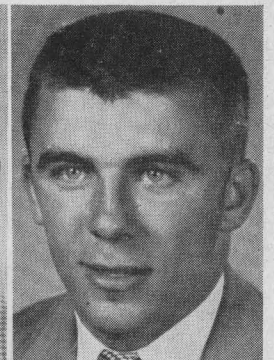
49—Gerald O. Witt



64—George P. Steinmetz

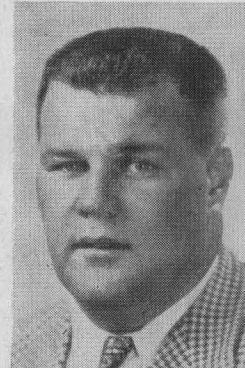


63—Clarence F. Stensby



12—James D. Haluska

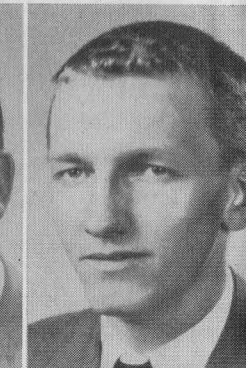
## WISCONSIN BADGERS



75—Charles W. Berndt



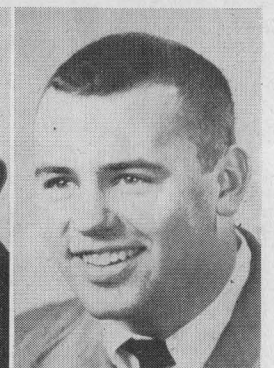
53—George R. Simkowski



21—Burton F. Hable



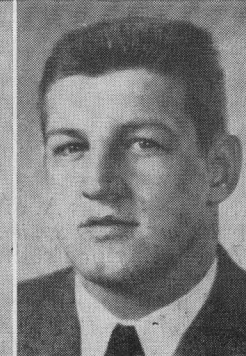
15—Archie Roy Burks



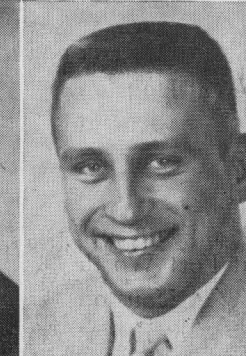
18—Roger M. Dornburg



35—Alan D. Ameche



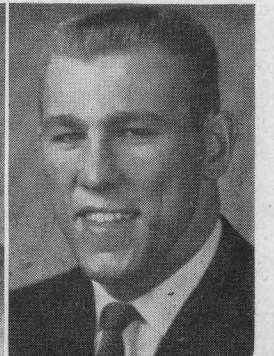
68—Arthur R. Prchlik



41—Harland I. Carl



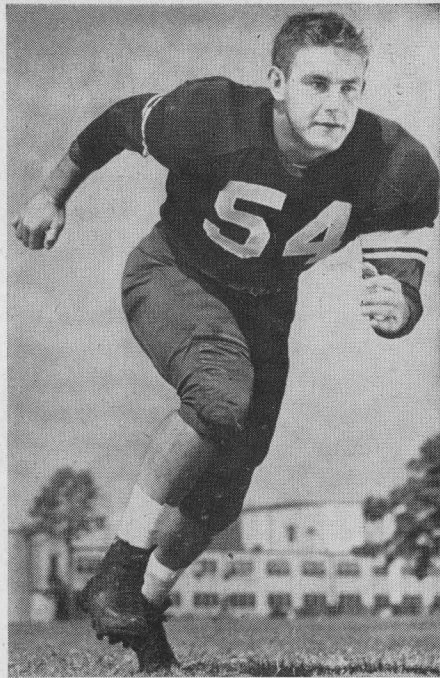
82—James A. Temp



89—Kenton A. Peters



1952 CO-CAPTAINS OF RICE INSTITUTE OWLS



DON RHODEN



BILL CROCKETT

RICE OWLS VARSITY BASKETBALL SCHEDULE

All home games of coach Don Suman's Owls are played on Autry Court in the new Rice Gymnasium, completed in 1951, which seats 6,000 fans for basketball games.

- 11 Dec. (Thur.) Sam Houston State at Huntsville
- 13 Dec. (Sat.) Kansas University at Houston
- 18 Dec. (Thur.) Tulane University at Houston
- 20 Dec. (Sat.) Colorado A.&M. at Houston
- 23 Dec. (Tues.) Stephen F. Austin at Nacogdoches
- 26-30 December—Owls play three games in S.W.C. tournament at Dallas
- 6 Jan. (Tues.) \*Southern Methodist at Houston
- 13 Jan. (Tues.) \*Baylor University at Waco
- 17 Jan. (Sat.) \*Arkansas University at Fayetteville
- 20 Jan. (Tues.) \*Texas Christian at Houston
- 24 Jan. (Sat.) \*Texas A.&M. at Houston
- 5 Feb. (Thur.) Sam Houston State at Houston
- 7 Feb. (Sat.) \*University of Texas at Austin
- 9 Feb. (Mon.) \*Arkansas University at Houston
- 14 Feb. (Sat.) \*Texas A.&M. at College Station
- 17 Feb. (Tues.) \*Baylor University at Houston
- 21 Feb. (Sat.) \*Texas Christian at Fort Worth
- 24 Feb. (Tues.) \*University of Texas at Houston
- 3 Mar. (Tues.) \*Southern Methodist at Dallas

\* Southwest Conference Game.

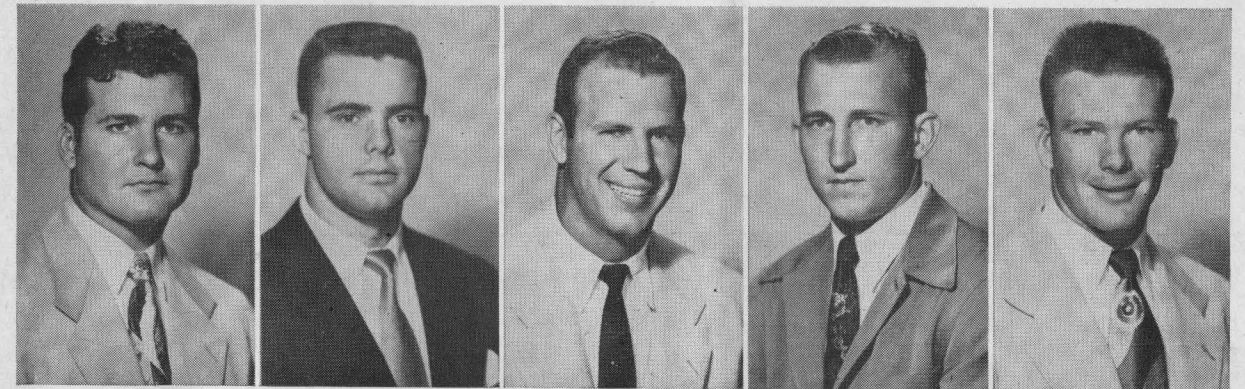
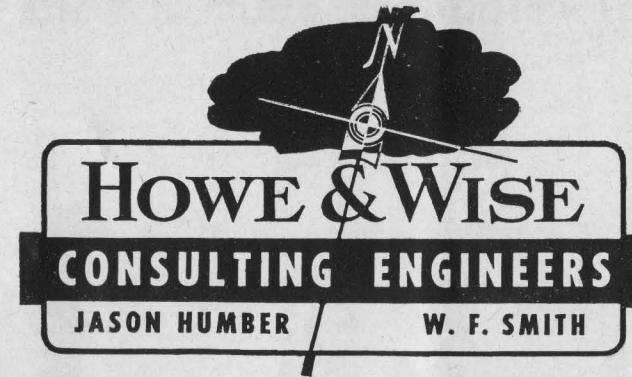
Freshman Basketball Schedule

The 1952-53 Rice freshman basketball team will play six of its 12 games at home as preliminary contests to varsity games at Autry Court in the Rice Gymnasium. Charles Moore is freshman cage coach. Here is the schedule:

- 11 Dec.—Wharton Jr. College at Wharton
- 13 Dec.—Victoria Jr. College at Houston
- 18 Dec.—Allen Academy at Houston
- 20 Dec.—Wharton Jr. College at Houston
- 13 Jan.—Baylor Freshmen at Waco
- 17 Jan.—Allen Academy at Bryan
- 24 Jan.—Texas A. & M. Freshmen at Houston
- 7 Feb.—Texas Freshmen at Austin
- 14 Feb.—Texas A. & M. Freshmen at College Station
- 17 Feb. Baylor Freshmen at Houston
- 20 Feb.—Victoria Jr. College at Victoria
- 24 Feb.—Texas Freshmen at Houston

Jason Humber  
Class of '22

W. F. Smith  
Class of '26



64—Walter Schleyer

65—Dan Hart

66—Dan "Hans" Wagner

67—W. C. Treadway

68—Larry Lundstedt

*Complete Insurance Coverage*

**American General Group**

American General Investment Corporation

American General Life Insurance Company

American General Insurance Company

RUSK BUILDING

HOUSTON, TEXAS

The Rice Athletic Association Would Appreciate Your Patronizing Our Advertisers



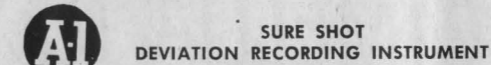
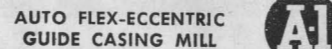
## 1952 UNIVERSITY OF WISCONSIN ROSTER

No.	Player	Pos.	Age	Ht.	Wt.	Class	Home Town
12	Haluska, James D.	B	19	5-10	165	Soph.	Racine, Wis.
15	Burks, Archie Roy	B	21	5-8	165	Senior	Louisville, Ky.
16	Canny, Thomas F.	B	21	5-11	175	Junior	Chicago, Ill.
18	Dornburg, Roger M.	B	20	5-8	190	Junior	Naperville, Ill.
19	Shwaiko, Paul	B	18	5-9	185	Fresh.	Kenosha, Wis.
21	Hable, Burton F.	B	21	6-3	172	Senior	Bloomer, Wis.
22	Wilson, Glen A.	E	20	6-1	183	Junior	Milwaukee, Wis.
23	Torresani, John A.	B	22	5-9	165	Senior	Wisconsin Rapids, Wis.
24	Vergetis, Gust G.	B	20	5-9	170	Junior	Milwaukee, Wis.
26	Bonofiglio, Mario A.	B	19	5-9	163	Soph.	Kenosha, Wis.
31	Dixon, John T.	B	20	6-0	179	Junior	Wisconsin, Wis.
33	Lamphere, Robert G.	B	21	6-2	198	Junior	Geneva, Ill.
35	Ameche, Alan D.	B	19	6-0	205	Soph.	Kenosha, Wis.
40	Gingrass, Robert J.	B	19	5-11	182	Soph.	Iron Mountain, Mich.
41	Carl, Harland I.	B	20	5-11	176	Junior	Greenwood, Wis.
43	Proctor, Thomas L.	B	21	5-11	187	Senior	Lockland, Ohio
44	Hansen, Wayne N.	B	22	5-11	170	Junior	Racine, Wis.
45	Bratt, Clarence M.	B	19	6-0	175	Soph.	Miamisburg, Ohio
43	Hutchinson, Bill E.	B	23	5-10	160	Senior	Chicago, Ill.
49	Witt, Gerald O.	B	20	5-10	184	Junior	Marshfield, Wis.
50	Craine, James E.	C	22	6-2	205	Senior	Watertown, Wis.
52	Cwayna, Michael B.	B	20	6-1	201	Junior	Sheboygan, Wis.
53	Simkowski, George R.	C	21	5-11	189	Senior	Chicago, Ill.
54	Messner, Gary R.	C	18	5-11	185	Soph.	Madison, Wis.

## 1952 RICE INSTITUTE OWLS VARSITY FOOTBALL ROSTER

No.	Name	Pos.	Wt.	Ht.	Age	Class	Exp.	Home Town
11	Horton Nesrsta	LH	149	5'9"	21	Junior	1 VL	San Antonio
15	Dickie Bob Haddox	RH	162	5'9"	20	Senior	2 VL	Navasota
16	Bobby Warren	LH	165	5'7"	20	Soph.	Sqd.	Austin
19	Bob Garbrecht	FB	200	6'1"	20	Junior	Sqd.	New York City, N.Y.
20	Oree "Buzzy" Bryan	QB	185	6'1"	20	Soph.	Sqd.	Houston (San Jacinto)
21	Atchley Proctor	QB	170	6'0"	18	Soph.	FL	DeKalb
22	Billy Ed Daniels	LH	168	6'0"	21	Senior	1 VL	Kerrville
23	Bill Gaskamp	RH	167	5'10"	20	Junior	J.C.	Brenham
24	Dan Drake	QB	190	6'2"	21	Junior	1 VL	Fort Worth
25	Buddy Grantham	QB	175	6'2"	19	Junior	Sqd.	Grand Prairie
26	Leroy Fenstemaker	QB	195	6'2"	20	Junior	Sqd.	Llano
31	Morris Stone	RH	167	5'9"	19	Soph.	FL	Kerrville
35	Bill Frazier	LH	165	5'10"	21	Senior	1 VL	Pasadena
36	Gordon Kellogg	LH	171	5'10"	19	Soph.	FL	Baytown
39	Don Costa	LH	194	6'0"	19	Soph.	FL	Houston (St. Thomas)
40	Tommy Lynch	FB	182	6'0"	20	Soph.	FL	Houston (San Jacinto)
42	Don Whittaker	FB	192	6'1"	19	Junior	Sqd.	Dallas
43	Carl Johnson	RH	179	5'11"	19	Junior	Sqd.	Houston (San Jacinto)
45	David "Kosse" Johnson	FB	176	6'0"	20	Junior	1 VL	Baytown
47	Dicky Moegle	LH	167	6'0"	18	Soph.	FL	Taylor
49	Gino Biasatti	FB	185	5'10"	20	Soph.	Sqd.	Dallas
50	Ronald Lassiter	C	202	6'2"	20	Soph.	FL	Houston (San Jacinto)
54	Don Rhoden (c-c)	C	200	5'11"	19	Senior	2 VL	Kerrville
55	Leo Rucka	C	204	6'2"	21	Junior	1 VL	Crosby
56	Bobby Moore	C	205	6'2"	22	Senior	2 VL	Amarillo
59	Jimmy Jax	C	200	6'2"	19	Soph.	FL	Houston (Lamar)
60	Kenny Paul	RG	195	5'11"	19	Soph.	FL	Houston (Lamar)
61	Gene Little	LG	205	6'0"	23	Senior	2 VL	Corpus Christi

**Always A Winning Combination!**



**9000 ALMEDA ROAD**



**HOUSTON TEXAS**

**A-1 BIT & TOOL COMPANY**

59	Wohlleber, Richard H.	B	20	5-11	190	Soph.	Chicago, Ill.
60	Amundsen, Norman R.	G	19	5-11	195	Soph.	Chicago, Ill.
61	Brandt, William F.	G	19	5-10	185	Soph.	Appleton, Wis.
62	O'Brien, George E.	G	21	5-10	187	Senior	Park Ridge, Ill.
63	Stensby, Clarence F.	G	19	5-11	187	Soph.	Chicago, Ill.
64	Steinmetz, George P.	G	21	6-3	192	Senior	Madison, Wis.
65	Gulseth, Wendell O.	B	20	6-0	210	Junior	Madison, Wis.
66	Roberts, Ronald D.	G	22	6-0	190	Junior	Chicago, Ill.
67	Kennedy, Robert A.	G	21	5-11	195	Senior	Rhineland, Wis.
68	Prchlik, Arthur R.	T	21	6-0	190	Senior	Cleveland, Ohio
69	Durkin, Terry	G	25	5-10	195	Senior	Madison, Wis.
70	Hoegh, Mark W.	G	19	5-9	195	Junior	Kaukauna, Wis.
71	Suminski, David M.	T	21	5-10	198	Senior	Ashland, Wis.
73	Ronzia, Edward	T	18	6-0	200	Soph.	Kenosha, Wis.
74	Ursin, Donald J.	T	19	6-0	186	Soph.	Chicago, Ill.
75	Berndt, Charles W.	T	22	6-3	259	Senior	Wausau, Wis.
77	Martin, Carl R.	T	21	5-11	218	Senior	Highland Park, Wis.
81	Wimmer, Hugo F.	E	21	6-2	195	Senior	Sheboygan, Wis.
82	Temp, James A.	E	18	6-2	205	Soph.	LaCrosse, Wis.
85	Wuhrman, Jerard L.	E	20	6-0	183	Junior	Milwaukee, Wis.
86	Esser, Norbert J.	E	20	6-2	188	Junior	Madison, Wis.
87	Locklin, Ronald E.	E	18	6-1	177	Soph.	Appleton, Wis.
88	Andrykowski, Ervin M.	E	22	6-1	185	Senior	Milwaukee, Wis.
89	Peters, Kenton A.	E	21	6-1	191	Senior	Glen Ellyn, Ill.
90	Voss, Donald P.	E	19	6-3	185	Soph.	Milwaukee, Wis.
94	Lundin, Keith E.	B	21	5-10	175	Soph.	Iron River, Mich.
97	Sternat, Robert F.	G	21	5-11	205	Soph.	Rush Lake, Wis.

"The Official Watch for Timing this Game is Longines . . . The World's Most Honored Watch"

62	LaMar "Skip" Lee	RG	197	6'0"	20	Junior	Sqd.	Huntsville
63	Jerry Fitzpatrick	C	202	6'1"	20	Soph.	FL	Harlingen
64	Walter Schleyer	RG	190	5'11"	20	Junior	Sqd.	San Angelo
65	Dan Hart	RG	195	5'10"	20	Junior	1 VL	Houston (Milby)
66	Dan "Hans" Wagner	RG	205	6'1"	21	Senior	1 VL	Schulenberg
67	W. C. Treadway	LG	200	6'1"	20	Junior	1 VL	Houston (San Jacinto)
68	Larry Lundstedt	LG	188	5'11"	18	Soph.	FL	Austin
69	James Timmons	LG	198	6'1"	22	Senior	1 VL	Sweetwater
70	John Hudson	LT	212	6'0"	19	Junior	1 VL	Center
71	Bill Crockett (c-c)	RT	206	6'2"	20	Senior	2 VL	Bonham
72	Max Schuebel	LT	210	6'1"	20	Junior	1 VL	Houston (Reagan)
73	LaVon Cox	RT	230	6'0"	19	Soph.	FL	Galena Park
74	Robert Cashion	RT	217	6'1"	20	Soph.	FL	Mexia
75	Layton Golemon	LT	210	6'4"	18	Soph.	FL	Kerrville
76	James Ellis	LT	200	6'0"	19	Soph.	FL	West Columbia
77	Dan Winship	LG	215	6'0"	19	Soph.	Sqd.	Houston (Reagan)
78	Richard Chapman	LT	218	6'6"	19	Junior	1 VL	Waxahachie
79	Buddy Edwards	RT	230	6'2"	21	Junior	Sqd.	Texarkana, Ark.
80	Jack Day	RE	195	6'0"	22	Senior	2 VL	Galena Park
81	Bill Fisk	LE	190	6'0"	21	Junior	1 VL	Irving
82	R. E. Wortham	RE	185	5'11"	19	Soph.	FL	Klein
83	R. J. Schroeder	LE	186	6'4"	20	Junior	1 VL	East Bernard
84	James Heflin	LE	188	6'2"	21	Soph.	Sqd.	Mart
85	"Chuck" Stephenson	LE	180	6'1"	18	Soph.	FL	Bloomington
86	LaDon Cox	RE	182	6'0"	19	Soph.	FL	Galena Park
87	Murff Bledsoe	RE	176	6'0"	19	Soph.	FL	Pearsall
88	Sammy Ward	LE	193	6'0"	20	Junior	Sqd.	Laredo
89	Blois Bridges	LE	180	6'1"	20	Junior	Sqd.	Grand Prairie
90	Lamoine Holland	RE	185	6'2"	19	Soph.	FL	San Antonio
91	Tommy Wilson	RE	187	6'2"	19	Junior	J.C.	Graham

"The Official Watch for Timing this Game is Longines . . . The World's Most Honored Watch"



**AT LUNCH OR DINNER**

You can always enjoy a delicious meal in the Warwick's Famous Crystal Dining Room

A PLEASURE TO SERVE YOU

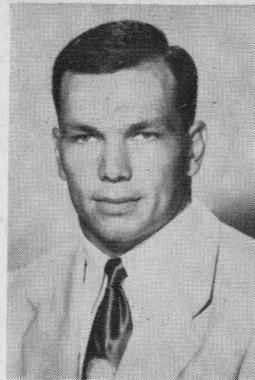


R. T. CULLATHER, Manager

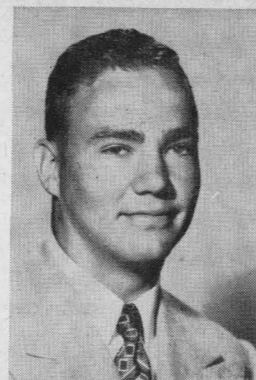
**WARWICK HOTEL**

AND APARTMENTS

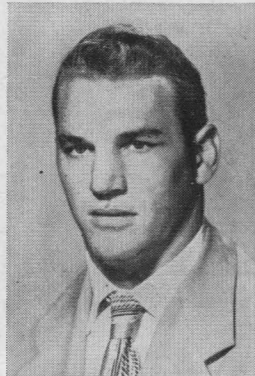
Houston 1, Texas



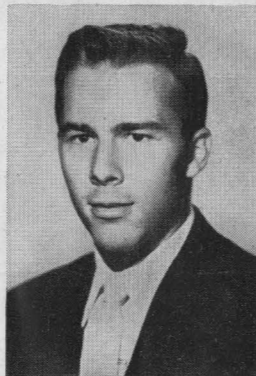
69—James Timmons



70—John Hudson



71—Bill Crockett (c-c)



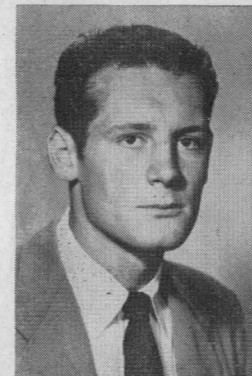
72—Max Schuebel



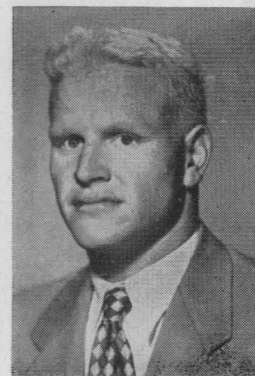
73—LaVon Cox



74—Robert Cashion



75—Layton Golemon



76—James Ellis



**OSHMANN'S**

FANNIN AT TEXAS

912 MAIN STREET

*Salutes the Rice Owls '52*

"Stay Dry When the Weather is Wet"

Light weight, compact Plastic Spectator

**PONCHO WITH HOOD**

Fits into your purse or pocket.

**1.25**

ORDER BY MAIL

PHONE PR-2231

Oshman's Athletic Dept.



Mmmmm... **CAMELLIA** Ice Cream!

Enjoy catering-quality Camellia Ice Cream often . . . it's a great hit for any occasion . . . after-the-game snacks . . . mealtime dessert or party treat. Buy the large family-size carton . . . or individual cube shaped cartons for personalized flavor selection.



**CAMELLIA**  
ice cream



For the name and address of your nearest dealer, call JUstin 0581.

Drinks in Stadium are cooled with

Texas Ice "Sized Ice"

**TEXAS ICE & FUEL  
COMPANY**

6301 Harrisburg

Wayside 2154

The Rice Athletic Association Would Appreciate Your Patronizing Our Advertisers



☆ *The Southwest's  
Finest . . .  
and reasonable, too!*

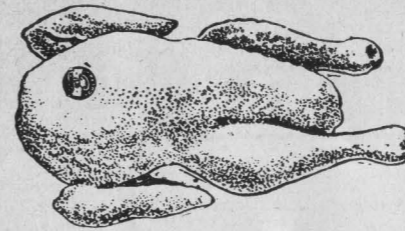
**WELDON** *Cafeteria*  
4916 South Main

- Open Daily—11:00 a.m. through 8:30 p.m.
- Two Free Parking Lots Adjoining

**South End Building Materials Co.**

READY MIX CONCRETE  
SAND — GRAVEL — CEMENT

South Houston Plant 5102 Galveston Road Phone MI-3328	Deer Park Plant Deer Park, Texas Phone GR-9-2251	Kirby Drive Plant 4830 Kirby Drive Phone LY-9131
---	--	--



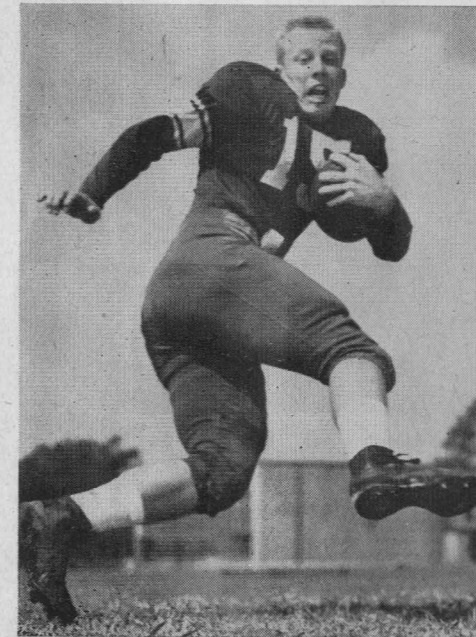
Frederick's Best Tagged Fryers  
FRESH, PLUMP, CLEAN  
They Sell Themselves

**FREDERICK POULTRY & EGG CO.**  
Vernon C. Fredericks, Sr., Pres.-Mgr.  
1817 CENTER • PReston 5195



77—Dan Winship    78—Richard Chapman    79—Buddy Edwards    80—Jack Day    81—Bill Fisk

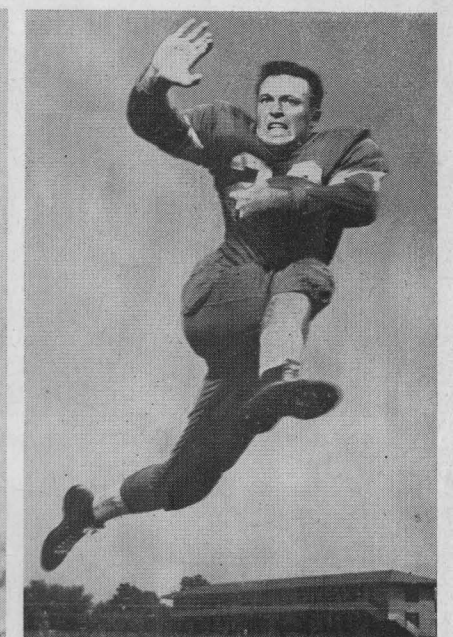
**THREE SENIOR OWL BACKS**



Dickie Bob Haddox



Bill Frazier



Billy Ed Daniels

*At the games it's . . .*

**JASMINE FRANKS AND  
HAM SANDWICHES**

(Always Government Inspected)

**HOUSTON PACKING COMPANY • 3301 NAVIGATION • PReston 2361**

*The Best FRIED CHICKEN in Town . . .*

Famous throughout the Southwest for its tenderness and flavor. Fast service, low prices. Box orders to take out at no extra cost.

**6441 SOUTH MAIN in HOUSTON**



The Rice Athletic Association Would Appreciate Your Patronizing Our Advertisers



**WITHIN REACH!**

the **RIGHT** way to  
plan a play...  
or a trip

A coach designs every play to go all the way . . . the same as today's bus traveler does when he chooses **CONTINENTAL TRAILWAYS** thru bus service between many of the metropolitan centers of America. Whether your trip be to the next town, or across the nation, make your first choice Continental!

And for weekend football trips, charter a big Continental Silverliner and follow your team wherever they play.

**CONTINENTAL TRAILWAYS**

"YOUR HIGHWAY HOST FROM COAST TO COAST"

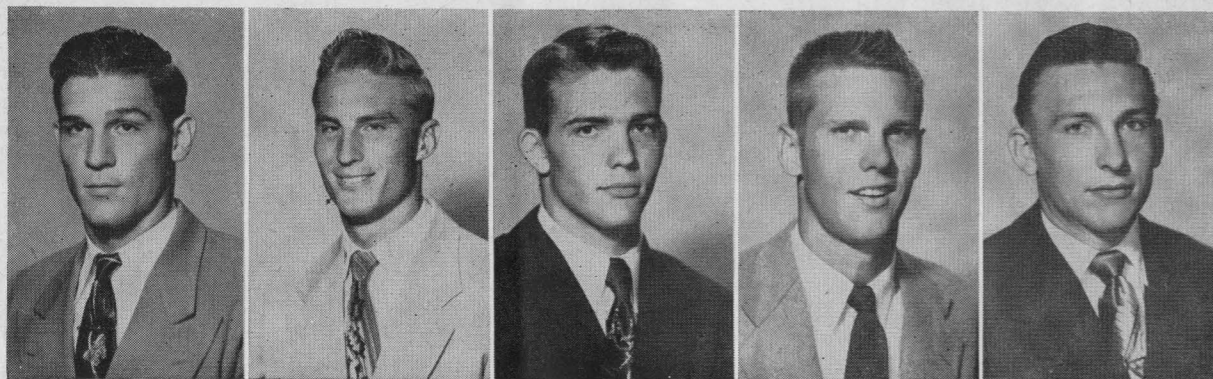


# PEIDIEN IRON & STEEL CO.

ESTABLISHED 1890

WHOLESALE

HOUSTON, TEXAS



82—R. E. Wortham

83—R. J. Schroeder

84—James Heflin

85 "Chuck" Stephenson

86—LaDon Cox

UNIVERSITY BLVD.  
RICE  
GREENGRASS  
10 minutes  
SO. SHEPHERD DR.  
W. GRAY

明宮  
Listen to the **SCORES** right after the game on **KPRC** brought to you by the **MING PALACE**

And if you want to make a score, **DAD**, treat the family to **GOOD** Chinese and American **FOOD** tonight at the **MING PALACE**  
*The House of Good Food*

In the River Oaks Shopping Center

for . . .

Office Forms • Folders  
Booklets • Color Printing  
Letterpress and Offset  
One-Time Carbon Forms  
Continuous • Fanfold  
Register Forms



THE REIN CO.

Victor 2611



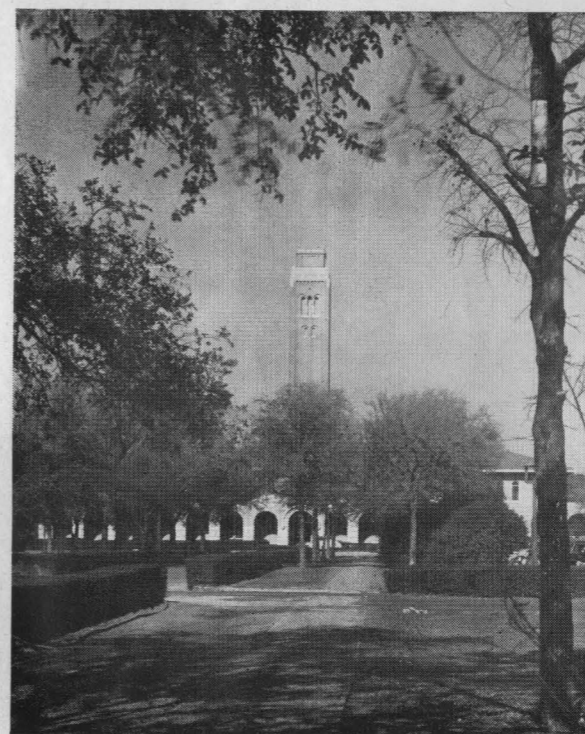
Fondren Library



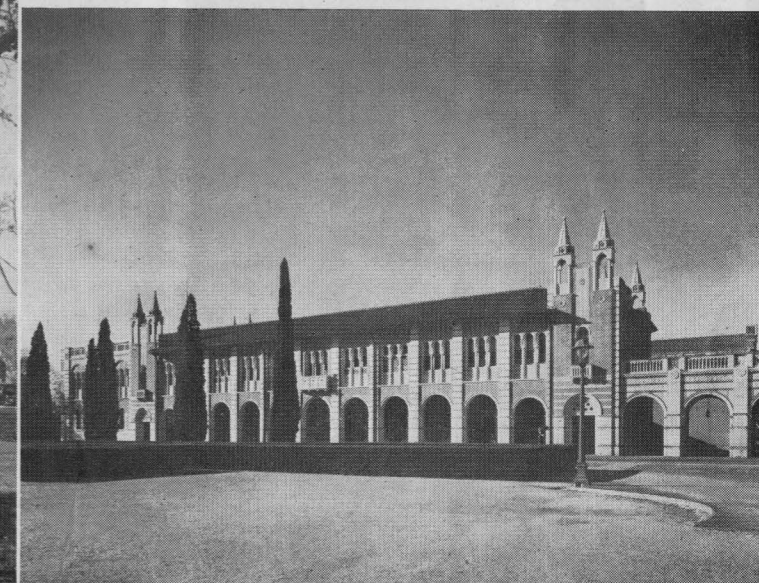
Cloisters of Lovett Hall

## Campus Scenes

OF THE RICE INSTITUTE



Engineering Building and Campanile



Physics Building

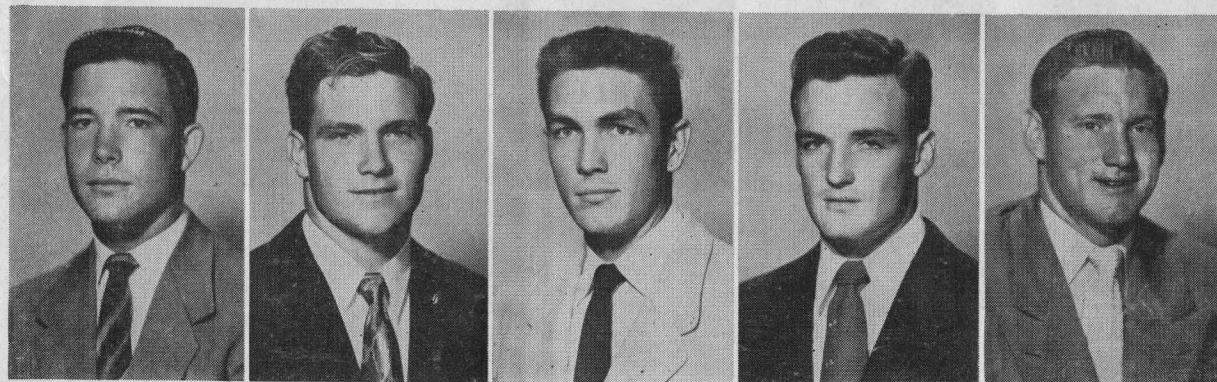


The "Fresh Up"  
Family Drink!



You like it...  
it likes you

BUY A CASE TODAY!



87—Murff Bledsoe

88—Sammy Ward

89—Blois Bridges

90—Lamoine Holland

91—Tommy Wilson

### CHAMPIONSHIP AND BOWL RECORD OF THE RICE OWLS

Rice Institute has fielded a football team for forty years, and in that time the Owls have provided many thrills for grid fans of the Southwest and the nation.

The Owls have played from coast to coast with intersectional competition against teams representing some of the country's finest schools.

Many honors have come the way of Rice teams in the past. The Owls have won the Southwest Conference championship on three occasions—in 1934, 1937, and 1949—and shared the title with Arkansas in 1946.

Rice has been represented in three major bowl games, and the Owls were victorious on each occasion. The 1937 team beat Colorado 28-14 in the Cotton Bowl classic, the 1946 club stopped Tennessee 8-0 in the Orange Bowl, and the 1949 team trimmed the North Carolina Tarheels 27-13 in the Cotton Bowl.

In addition, many other honors have come the way of Rice players and coaches. Several players have been named to All-American teams, and a host of Owls have been accorded All-Southwest Conference honors.

Special honors of last year saw end Bill Howton selected on many All-American teams and invited to play for the College All-Stars, while along with teammate end Sonny McCurry he played under Rice coach Jess Neely in the East-West Shrine game for the benefit of crippled children last December.

Represented for National Advertising by DON SPENCER COMPANY, INC., 271 Madison Ave., New York 16, N.Y.

ENJOY THE GAME MORE WITH

# BINOCULARS

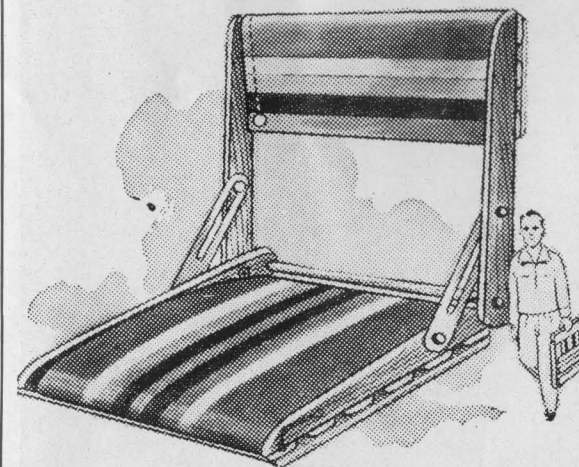
And

## FIELD GLASSES



Holt's carry a complete line of fine nationally known binoculars and field glasses, all sizes, all prices.

Come in our store at your first opportunity. Visit our camera shop and let us show you these fine glasses. . . .



"Tak-Along" stadium seat and backrest, fine hardwood construction, kapok seat and back, durable fancy striped canvas, hours of comfort.





"I'd walk a mile for a  
**CAMEL**"



*So Mild—  
So Flavorful!*

