

Cotton Bowl

OCTOBER 20, 1951

**PRICE
50c**

RICE vs. S.M.U.

Willard Mullin

Mercury

The Best Deal in Town

You Save Four Ways

- ★ SEWELL Saves You MONEY
- ★ SEWELL Buys DIRECT From the Factory
- ★ SEWELL Has a DIRECT Contract With the Factory
- ★ SEWELL Buys at LOWEST DIRECT Factory Price

More OF EVERYTHING YOU WANT
WITH *Mercury*

SEWELL MOTOR CO.

“Dallas’ oldest authorized LINCOLN-MERCURY Dealer”

1715 N. Akard

RI verside - 6741

Rice Institute

vs.

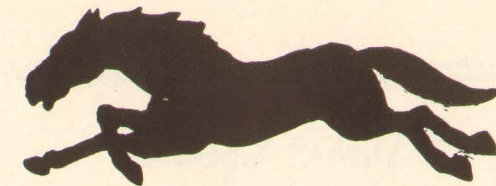
Southern Methodist University

Football Game

Cotton Bowl

October 20, 1951

DALLAS - TEXAS



Published by

S. M. U. ATHLETIC PUBLICATIONS

L. B. MORGAN, *Manager*

LESTER JORDAN, *Editor*

Represented for National Advertising by DON SPENCER COMPANY, INC., 271 Madison Ave., New York City



BEST IN THE WEST!

... Ring & Brewer's famous brand
ranchwear for
guys and gals who like things
casual . . . colorful . . . comfortable!

Ranchers, square dancers and smart loafers, alike, know that Ring & Brewer has corralled the very best of everything Western for everybody in the family. And that includes your boots and sombrero!



Pat Knight, 200, 6-2, 22, Senior, San Antonio. With 394 minutes to his credit, Knight led the Mustangs last year in time played. He was a double-duty man as he played fullback on offensive and right end on defense. In the backfield his blocks paved the way for many gains by his teammates and although he seldom carried the ball more than two or three times a game, he could be relied upon to make needed yardage for first downs. He averaged 4.5 yards for each of the 26 times he carried the ball, and he caught four passes for 108 yards, the longest gain being for 72 yards in the Texas game.

Fred Benners, 195, 6-3, 21, Senior, Dallas. Because of his sensational play against Ohio State when he completed 19 passes for 306 yards and four touchdowns, Benners was named "Player of the Week." For the season he averaged better than a completed pass a minute as he completed 109 in 108 minutes. He led the conference in yards gained on passes, percentage completed, and number completed. Each time Benners got the ball the Ponies averaged gaining more than 5 yards. Benners' two-year record as a passer is tops for Southwest Conference stars during their sophomore and junior years.

JOHN SEXTON & CO.

Manufacturing Wholesale Grocers

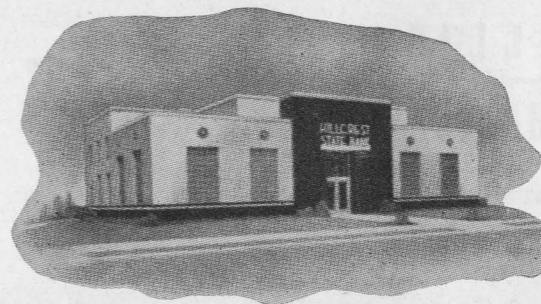
DALLAS

411 ELM STREET

TELEPHONE RIverside 6243

A CORDIAL WELCOME AWAITS YOU

at . . .

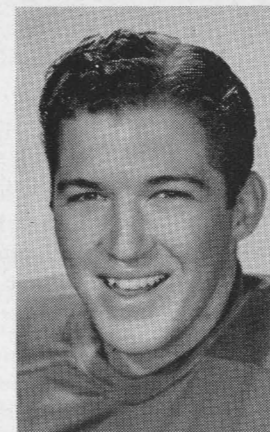


Hillcrest State Bank

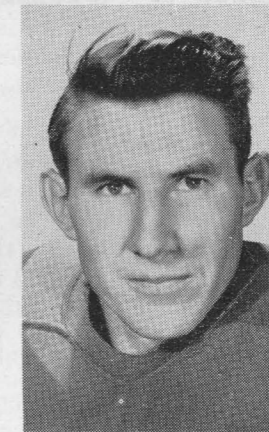
IN UNIVERSITY PARK

DALLAS

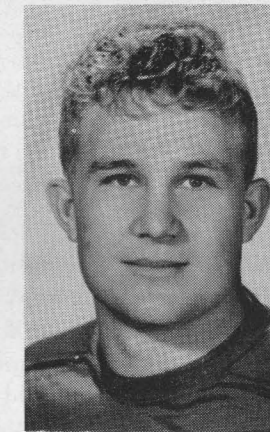
MEMBER FEDERAL DEPOSIT INSURANCE CORPORATION



Don Miller
Back (S.M.U.)



Mack Tunnell
End (S.M.U.)

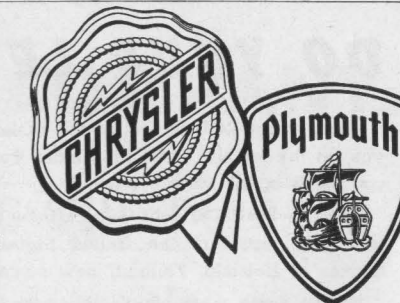


I. D. Russell
Back (S.M.U.)

You Get the Good Things First

From

Chrysler



C. S. HAMILTON MOTOR CO.

Chrysler Motor Cars
Plymouth Motor Cars

PHONE RI-9281
710 N. PEARL ST.
DALLAS

PARTS WHOLESALER
CHRYSLER CORP.
MOPAR PARTS AND ACCESSORIES



BERT COOK **CADILLAC**
OLDSMOBILE **SERVICE**

Exclusive

CADILLAC and OLDSMOBILE

Parts and Service

1215-17 Patterson Ave.

Phone Riverside-4055

Tonight's Game

IN THE HEARTS of many of the SMU football players, the most important part of the grid season begins tonight. Intersectional triumphs are satisfying, but to the players of the 1951 team the Southwest Conference race is of major significance in their plans for the year.

Tonight's game brings together a pair of teams which gained great intersectional victories last Saturday. Defeat of Notre Dame by SMU and of Navy by Rice makes the meeting of the two victors of more than sectional interest. Since World War II the annual meeting of the Owls and Mustangs has had an important bearing upon the outcome of the conference championship race every year except one. In 1946 Rice won and then tied with Arkansas for the title.

For the next three years the winner of the Rice-SMU contest was undisputed conference champion.

Tonight's battle will be the thirty-first meeting of the two teams, which first played in 1916. The Mustangs have won sixteen of the games and the Owls have been victors on fourteen occasions. Never have the clubs played a tie game. Rice won the first game of the series 143 to 3. The largest score ever made by SMU was in 1928 when the Ponies won 53 to 13.

Outstanding stars for Rice in the victory over Navy were Dan Drake, star passer, and Bill Howton, ace receiver. This combination connected for 132 yards. SMU's passing defense will be up against its biggest problem of the year, but from the way it functioned against Notre Dame indicates that Howton and Drake will have difficulty in Saturday's game.

DEE R. REEVES
Realtor

Business and Industrial Properties Exclusively

For Sale • For Lease • For Rent

Riverside 3575

1116 REPUBLIC BANK BUILDING

Next Home Game

HOMECOMING for SMU's thousands of former students will be observed the week-end of the Mustangs' next home game when the University of Texas Longhorns are the guests of the Ponies. The date of the game is November 3.

In the five games played by SMU and Texas during the post-war period, the Mustangs have been victorious three times and Texas has won twice. The victor in three of the last four games between the clubs has won by three points or less.

The Longhorns will be seeking to even the all-time count between the teams as SMU has won 14, lost 13, and tied 3. SMU did not defeat the Longhorns until 1924 when the score was 10 to 6 for the Ponies. No

SMU team has ever scored more than three touchdowns on the Texas eleven.

Many of the Mustangs will be taking part in their last Homecoming game and will be striving to repeat the victory won over Texas in the Cotton Bowl when they were sophomores. Among these SMU seniors are Fred Benners, Pat Knight, H. N. Russell, Jr., I. D. Russell, Henry Stollenwerck, Dick Hightower, Herschel Forester, Ike Robb, and Ben White, nine Mustangs who have been responsible for numerous victories.

The Texas team that will oppose the Ponies won four intersectional victories for the Southwest in its pre-conference schedule, winning from Kentucky, Purdue, North Carolina, and Oklahoma.

DO YOUR LEVEL BEST!!

That's what YOU expect of the athletes who represent you on the football field, the cinder track, the basketball court and in all other events.

That's what YOU will expect from the great athletes who will represent the United States in the Olympic Games at Helsinki, Finland, next summer.

By the same token, that's what the athletes expect of YOU, Mr. and Mrs. American Fan.

They expect you to DO YOUR LEVEL BEST in contributing to the United States Olympic Fund so that EVERY great athlete in the nation will sail the Ocean to meet the challenge of the world.

Russia and other nations are going to send forth powerful teams to end America's amazing record of

Olympic victories. WE must meet that challenge. WE must have the financial assistance of ALL America.

Do YOUR level best now. Make your check or money order to The United States Olympic Association and mail to Matty Bell, Director of Athletics, Southern Methodist University, Dallas, Texas.

PLEASE FILL OUT THIS FORM

I herewith subscribe \$ _____ to the United States Olympic Fund.

Name of Donor _____

Address _____

Every donor of Twenty-Five Dollars, or more, will receive a complimentary pictorial summary of the 1952 Olympic Games.

LYON-GRAY LUMBER COMPANY

Established 1876

SEVENTY-FIVE YEARS SERVING THE PUBLIC

A Texas Institution

All Types of Quality Building Materials and Nationally-Known Products

Assistance on Home and Remodeling Loans—Call Us

DALLAS YARD — 3701 MAIN STREET — TEnison-4161

OAK CLIFF YARD — 700 S. MARSALIS (at Clarendon) — WOODLAWN-2181

The Official Watch for Timing Today's Game is Longines—"The World's Most Honored Watch."

For SIGNALS and PENALTIES See Page 27

Mustang
MEN AT WORK

FOR SHEETMETAL—FOR YOU!

FABRICATION AND INSTALLATION
 DOMESTIC • INDUSTRIAL

- ★ AIR CONDITIONING & HEATING DUCT WORK
- ★ VENTILATORS, GUTTERS, DOWNSPOUTS
- ★ STAINLESS STEEL DRAINBOARDS, ETC.
- ★ CUSTOM BUILT TRUCK BODIES

*Our machines work ALL METALS
 up to 1/4" thickness*

★ CONTRACTORS
 ★ ENGINEERS

MUSTANG
 SHEETMETAL & MFG. CO.

3013 Canton St. • PR-8511 • Dallas

Bill Forester, 220, 6-3, 19, Junior, Dallas. Forester, a former star at Woodrow Wilson High School, may develop into one of the outstanding backs in the Southwest Conference this season. Last year he played his best game against Arkansas, scoring a touchdown on a 13-yard smash. In 1950 he carried the ball 33 times for an average of 3.8 yards each attempt.

I. D. Russell, 200, 5-10, 22, Senior, Wellington. Seldom does a defensive player attract the attention of fans as much as Russell did last year. Never used on offense, Russell vied with the ball carriers and passers in popularity because of his ferocious play as a line-backer.

When FINANCIAL SECURITY
 is your GOAL . . .

LET US HELP YOU ATTAIN IT!

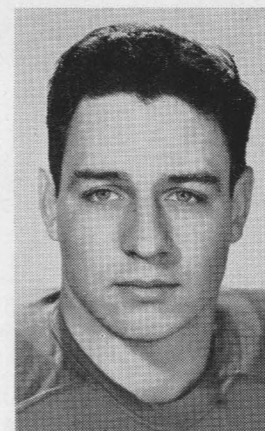
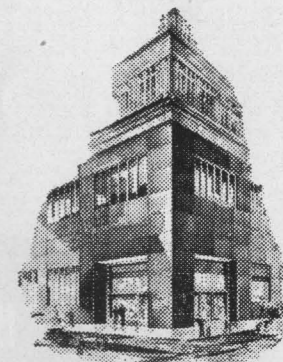
INVESTMENTS ★ SAVINGS

SEMI-ANNUAL DIVIDENDS

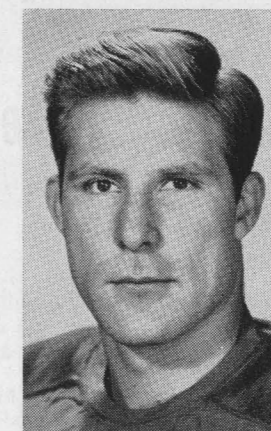
DALLAS FEDERAL
 SAVINGS and LOAN ASSOCIATION
 MAGNOLIA BUILDING

RAndolph-9377

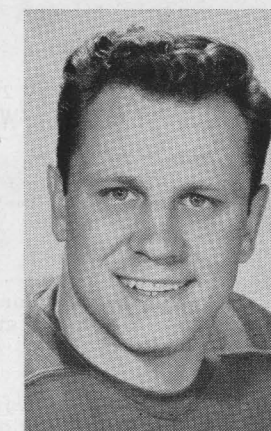
Uninterrupted Dividends for Over 31 Years



Buford Partee
 Tackle (S.M.U.)



Harry Dean
 Tackle (S.M.U.)



Alex Litowkin
 End (S.M.U.)

MUSTANG PHARMACY

6301 HILLCREST

LAkeside-2178



We Offer a Better Drug Store Service to the Park Cities-Preston Hollow Area

PROMPT DELIVERIES • COURTEOUS SERVICE



TENNESSEE DAIRIES
HOMOGENIZED MILK
 Your Best Food at its Best

THE **Adolphus**

PRESENTS

Dorothy Franey's

SENSATIONAL

ICE REVUE

Texas' only complete
floor show on real ice

AND Herman Waldman and his Orchestra

Daily at Luncheon, Dinner and Supper

TWO WEEKS ONLY—OCT. 29 through NOV. 11
KAY THOMPSON & THE WILLIAMS BROTHERS

Century Room

Wayne Ligon, 210, 5-9, 19, Junior, Wichita Falls. This former all stater also plays guard on offense. As a sophomore last year he played 72 minutes and received a letter.

Bob Cadwallader, 215, 6-1, 23, Junior, Fort Worth. Last year Cadwallader saw action against Georgia Tech, Ohio State, and Oklahoma A&M. He likely will do some of the place kicking for the Mustangs in 1951.

Lou Miller, 190, 6-1, 21, Sophomore, St. Louis. Miller was an end in high school but his abilities make him an ideal tackle in the SMU system.

Ben White, 205, 6-4, 21, Senior, San Antonio. Miraculous pass catching by White aided the Mustangs greatly last year. He caught four touchdown tosses and led the team in yards gained on passes caught with 468 yards to his credit.

Timing...

The sales punch of your advertising literature must hit at the right time for greatest results. We specialize in working with you, scheduling your printing to come off our presses so that it meets your deadlines and PRODUCES SALES. Call us at **TAylor-9949**

HELMS Printing Company, Inc.

The Official Watch for Timing Today's Game is Longines—"The World's Most Honored Watch."

Clothes by

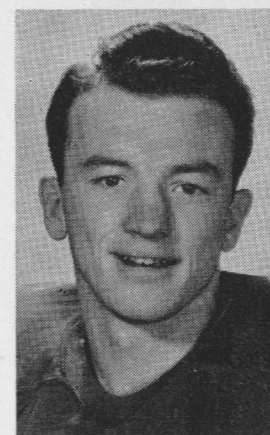
Fashion Park

Exclusively in Dallas at

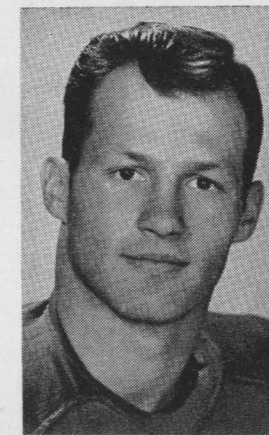
Reynolds R P enland

DOWNTOWN and
PRESTON CENTER

Fashion Park clothes possess an ease of fit that gives your personality more confidence, dignity and character through good taste.



Bill Rippey
End (S.M.U.)



Henry Stollenwerck
Back (S.M.U.)



Dave Powell
End (S.M.U.)

Frank J. McClure

GENERAL CONTRACTOR

Specializing in Commercial Building

Phone **Victor-8343**

808 N. Good Street

ENJOY...



A LIFT FOR LIFE!

Why Not...

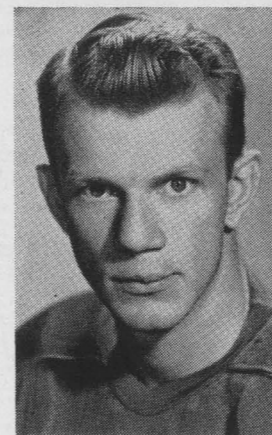
CHARTER a BUS?

Keep the crowd together. It is more fun!

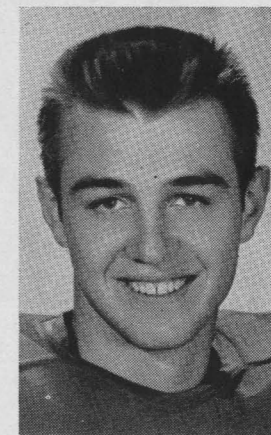
Dial PR-4976 for rates and information
or write

Texas Electric Bus Lines

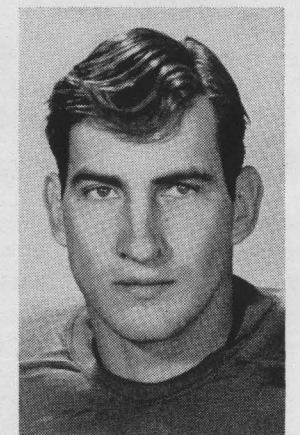
1521 Wood Street
DALLAS 1, TEXAS



Gayle Mills
Back (S.M.U.)



Fred Benners
Back (S.M.U.)



Gene Gillis
Back (S.M.U.)

FAKES & COMPANY

Furnishing Texas Homes Since 1876

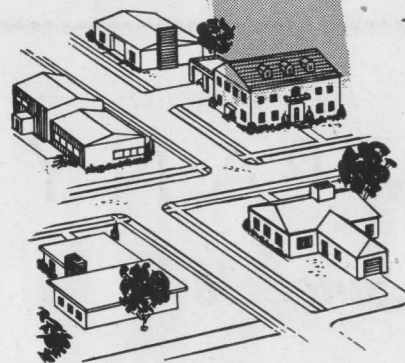
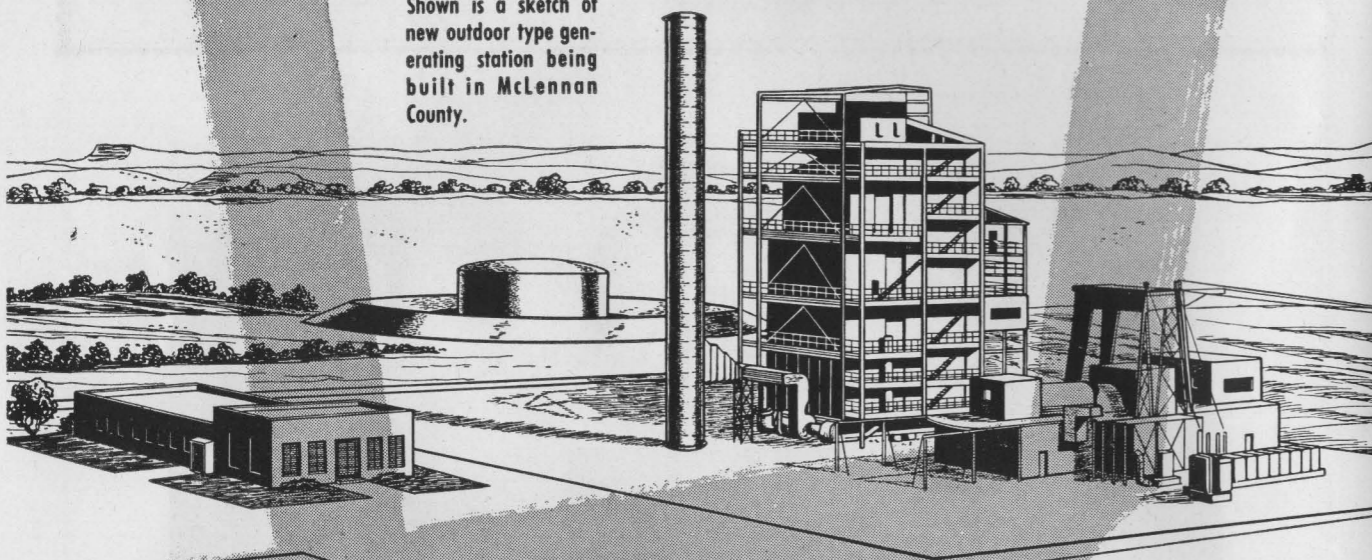


1307 ELM STREET

DALLAS, TEXAS

Providing for the Texas of today . . . planning for the Texas of tomorrow!

Shown is a sketch of new outdoor type generating station being built in McLennan County.



AMPLÉ electric power is available NOW in North, Central and East Texas to supply all the needs of today and of the immediate future! TP&L is now providing still more electric power for tomorrow's needs. A new 80,000 kilowatt generating station is being built in McLennan County, scheduled for operation in early 1953. An order has been placed for another similar size generating unit for service in 1954.

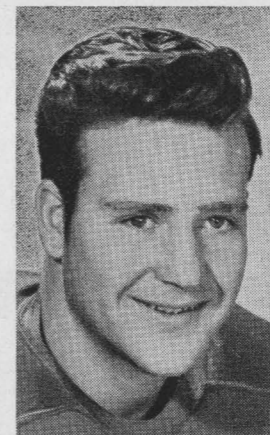
Thus, as TP&L provides the electric power needed by its customers today . . . it is always planning for the greater needs of tomorrow!

TEXAS POWER & LIGHT CO.

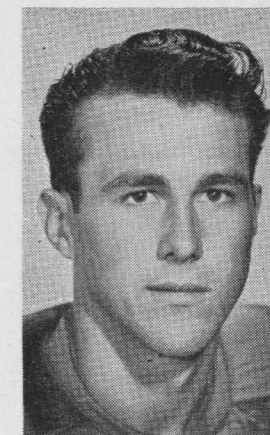
Convenient to all business locations . . . 450 beautiful rooms each with a bath . . . overlooking downtown Dallas . . . reasonable rates . . . excellent dining service

Jefferson hotel

DALLAS LEADING HOTEL Dallas, Texas



Ike Robb
Guard (S.M.U.)



Ben White
End (S.M.U.)



A Touchdown For Quality and Satisfaction!

MACATEE, Inc.

Building Materials

Roofing — Flooring — Rockwool Insulation
Sold on small monthly payments FHA Terms

4703 Bengal Street

Phone LO-5291



**Be Happy -
Go Lucky!**

EILEEN WILSON, Lucky Star of TV and Radio, says:
**At football games I love to cheer
 "Go team!" and "Hip Hooray!"
 But for a better taste I shout,
 "Go Lucky Strike today!"**
(Luckies taste better than any other cigarette!)



**LUCKIES TASTE BETTER
 THAN ANY OTHER CIGARETTE!**

**L.S./M.F.T.
 Lucky Strike Means Fine Tobacco**

COPR., THE AMERICAN TOBACCO COMPANY

OFFICIAL WATCH FOR THIS GAME

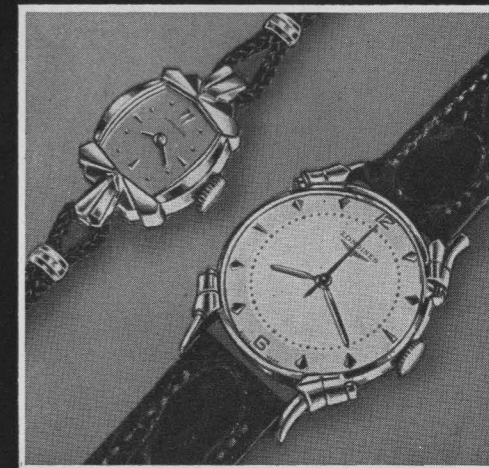


Longines



The World's Most Honored Watch

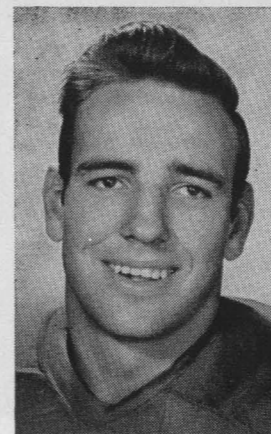
ACCEPTED AS OFFICIAL WATCH
 FOR TIMING
 CHAMPIONSHIP SPORTS EVENTS
 IN ALL FIELDS ALL OVER THE WORLD



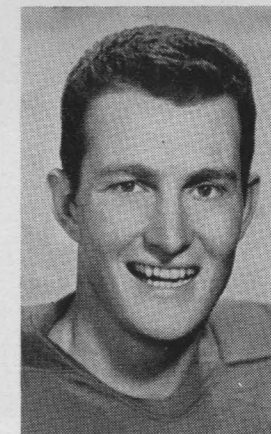
*Product of
 Longines-Wittnauer Watch Company*

Henry Stollenwerck, 185, 5-11, 20, Senior, Waxahachie. After getting off to a fast start last year when his defensive play against Ohio State and his offensive showing against Missouri stamped him as a highly-valuable back, Stollenwerck suffered a broken leg and was out for the remainder of the season. In spring drills, however, he showed that he had completely recovered from the injury and he should be able to go at top speed in the fall.

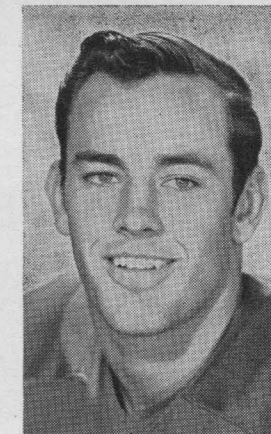
Benton Musslewhite, 170, 5-11, 20, Junior, Lufkin. Musslewhite gained more ground rushing last year than any other Mustang with the exception of Rote and Champion, who have completed their college careers, and he ranked immediately behind White and Champion in yards gained on passes caught. His defensive work also was outstanding.



Bill Forester
 Back (S.M.U.)



H. N. Russell, Jr.
 Back (S.M.U.)



Herschel Forester
 Guard (S.M.U.)

DRINK

Coca-Cola

REG. U. S. PAT. OFF.

add Zest

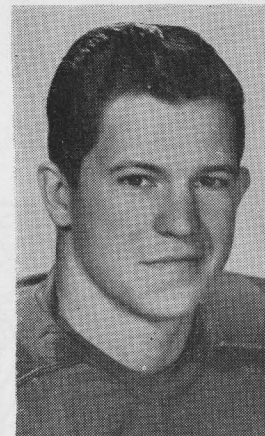


BOTTLED UNDER AUTHORITY OF THE COCA-COLA COMPANY BY
THE COCA-COLA BOTTLING WORKS

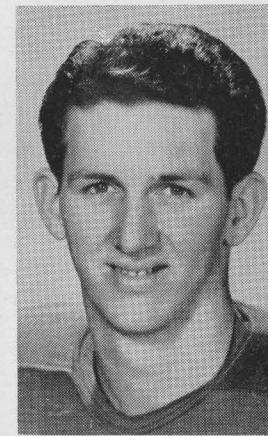
**The Handsome, Hand-Felted
Oxford by Mr. Disney . . .**

You subscribe to the finest when you select Mr. Disney's Oxford. Careful hand shaping and hand felting make for comfortable fit and smart appearance. Mr. Disney's Oxford, \$12.50 to \$40.00, in Dallas exclusively at . . .

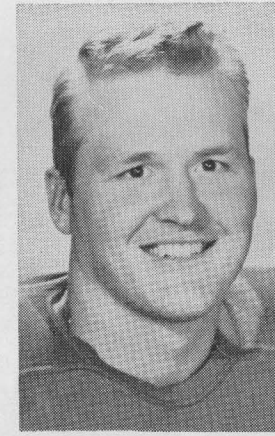
Jas. K. Wilson



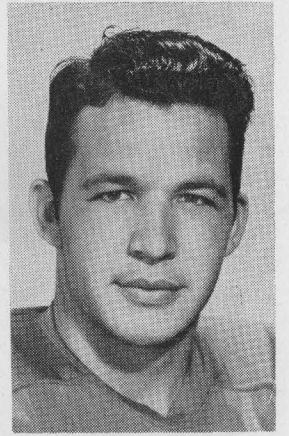
Dale Moore
Back (S.M.U.)



Bob Hooks
End (S.M.U.)



Dick Hightower
Center (S.M.U.)



Jerry Clem
Tackle (S.M.U.)

THE WINNER

Prize-winning cooks recommend Morton Foods . . .
"fine foods for fine folks" . . . all over the Southwest



Morton Foods

The Highway Scrimmage

makes Football

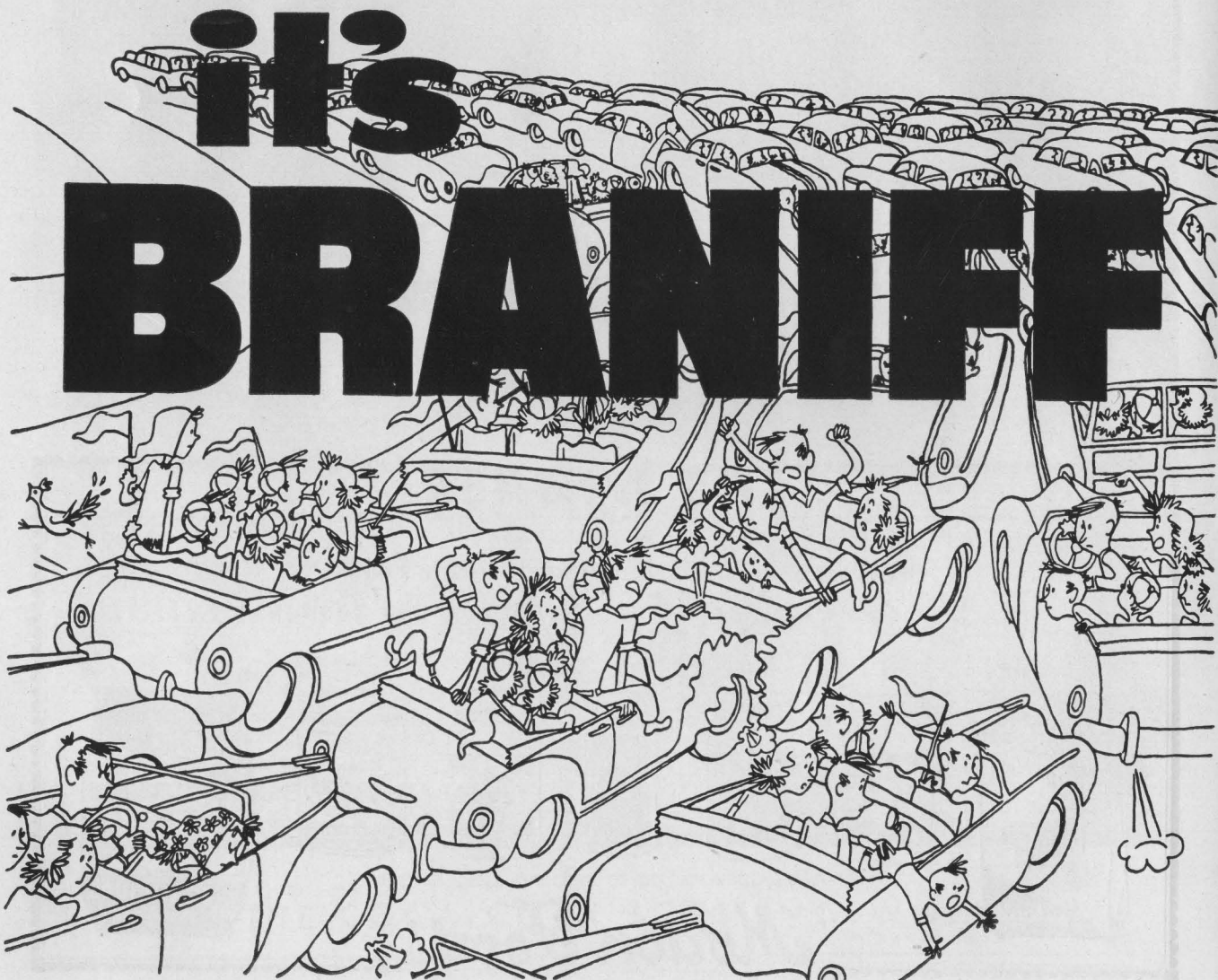
seem tame!

Next time Fly

and enjoy

the game—

and when you fly remember the name . . .



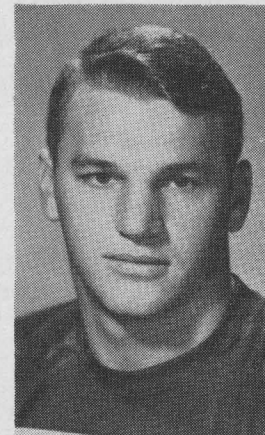
Varis C. Young

Realtor - Insurance

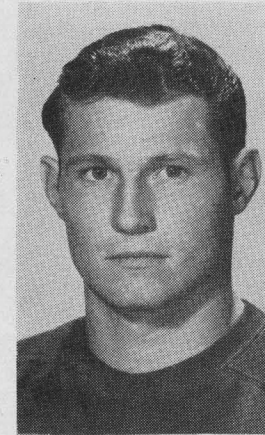
*Specializing in High-Class Residential Property
and Suburban Estates*

Phone JU stin - 0543

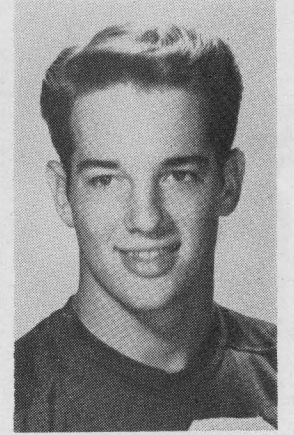
6701 Preston Road



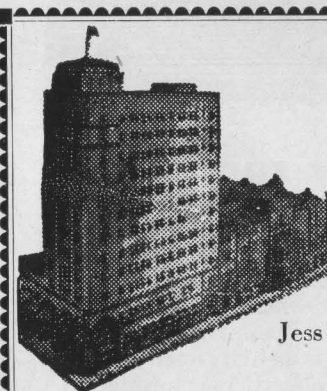
Bill Crockett
Tackle (Rice)



Bobby Moore
Center (Rice)



Billy Burkhalter
Back (Rice)



**The
Driskill**

Jess Whatley, Manager

Welcomes You to Austin, Your headquarters
when on business or pleasure.

300 rooms — 200 air-conditioned
—the standby of Austin's discriminating visitors
for half century, in center of Austin—and Texas.

PRospect 3711

Established 1901

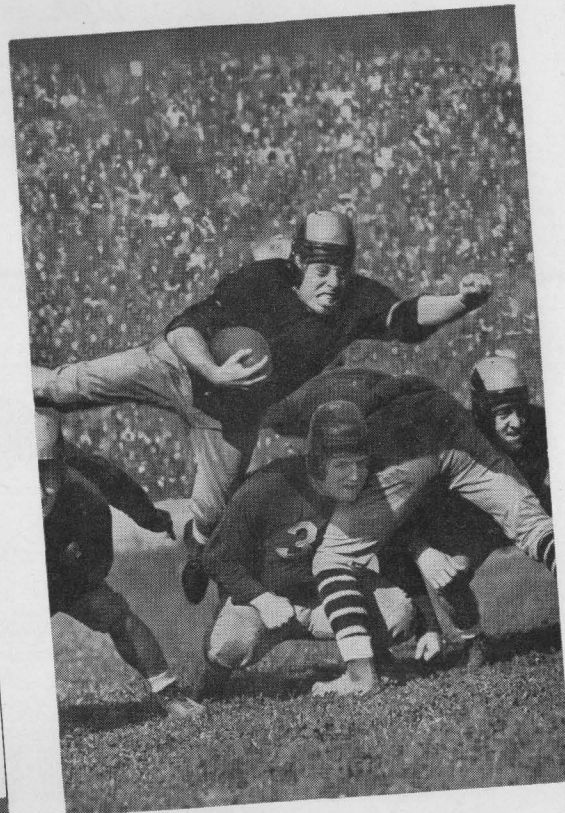
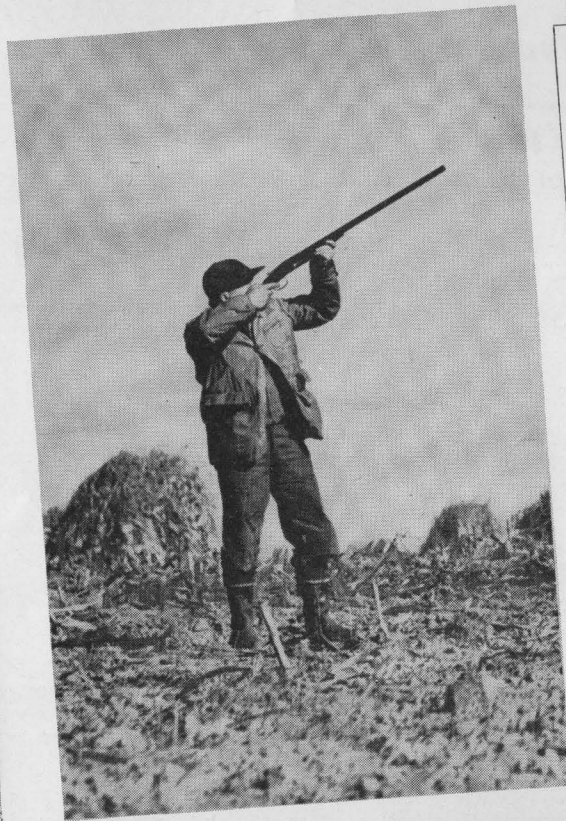
**J. F. Zimmerman
& Sons**

Signs and Neon Displays

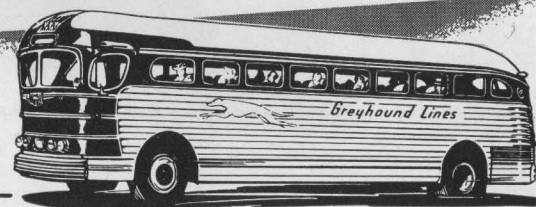
921-931 N. Industrial Blvd.

DALLAS - TEXAS

Follow the Game...



by **GREYHOUND!**



Relax as you ride direct to the spot for sports!

Whether you're on the track of feather, fur, or pigskin—go Greyhound for convenient, relaxed travel straight to hideaway hunting grounds or action-packed football stadiums!

Sit back in the deep cushions of a reclining easy-chair—and enjoy your freedom from driving strain, traffic troubles, long hours behind the wheel... at only a third the cost of operating your own car! Well-timed schedules and far-flung Greyhound

routes take you exactly where you want to go... to remote lake and forest areas... to the haunts of deer, duck, and pheasant... to the heart of football cities and university towns.

If your crowd loves football, basketball, ice hockey—any kind of sports activity—get 'em together and charter a Greyhound! It's more fun, it costs less per person, it takes you right to the scene of action!



GREYHOUND

Luby's

HILLCREST CAFETERIA

Opposite McFarlin Auditorium

FINE FOOD, FAST FRIENDLY SERVICE

The Cotton Bowl

All home games of the SMU Mustangs will be played at the Cotton Bowl in 1951. This stadium, which is located on the grounds of the State Fair of Texas, was built in 1930 and had a seating capacity of 45,507. Because of the growth of Dallas and the increased interest in football, the Board of Directors of the State Fair of Texas, which owns the stadium, decided in December 1947 to increase the size of the bowl to 67,435. The enlarged stadium was ready for the 1948 season, but it still did not meet the demands of the fans for the most important games. Additional seats were built in 1949 and the capacity of the structure is now 75,347.

The Cotton Bowl Press Box

Builders of the Cotton Bowl Press Box believe it is the largest, the most complete, and the best in the country. It is three stories high, 171 feet long, and accommodates 184 press writers. It also has six broadcasting booths, two coaches booths, and a public address system booth. It has stations for twenty tripod mounted cameras. Forced air heating and ventilation are provided.

The stadium is located a short distance east of the principal business district of Dallas.

LAUNDRY, DRY CLEANING
and EXPERT ALTERATIONS

1 Day Service - SHIRTS AND DRY CLEANING

(buttons replaced and minor repairs made free of charge)

Puritan LAUNDRY

BE SURE WITH PURITAN

Phil Baxter, Manager
6915 Hillcrest LA keside - 4337

G. S. CLARDY

Clardy's

Contract Service Company

Refrigeration • Air Conditioning • Heating

TELEPHONES:
FAIRDALE-2982 9223 PENINSULA DRIVE
LAKESIDE-4111

**Welcome to Dallas,
FOOTBALL FANS**

Make your visit complete by dining and dancing at the nationally famous Mural Room this evening. Excellent food, famous orchestras and sparkling floor show nightly except Sunday.

Mural Room

BAKER HOTEL
AN AFFILIATED NATIONAL HOTEL
Fenton J. Baker, Manager

Buford Partee, 205, 6-1, 21, Junior, Nashville, Tenn. Although SMU was loaded with veteran tackles in 1950, Partee, an extremely agile player, played for 65 minutes and earned his letter.

Harry Dean, 185, 6-0, 20, Junior, Breckenridge. Used as a defensive end during his sophomore year, Dean played 165 minutes. His best game was against the Arkansas Razorbacks.

For Better **AIR-CONDITIONING
PLUMBING and HEATING**

Expertly Designed and Installed by

MARTIN-JOHNSON ENGINEERING CO.

MECHANICAL CONTRACTORS

409 N. PEARL STREET

Phone PRespect 8171



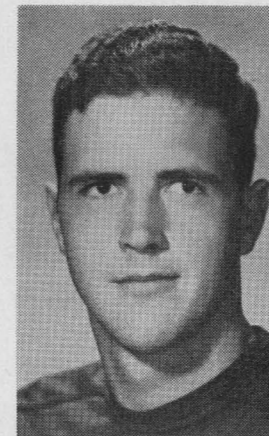
In Fine Clothes for Men,
the last word in quality

is two words:

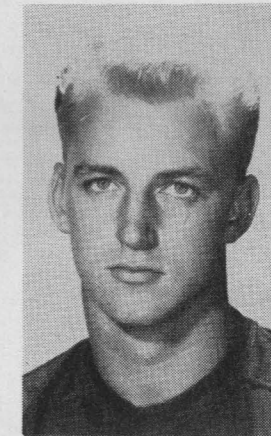
Hickey-Freeman

IN DALLAS ONLY AT

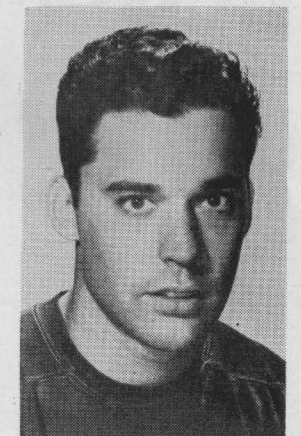
Dreyfuss & Son



Richard Chapman
Tackle (Rice)



Dan Drake
Back (Rice)



Glenn Walls
Tackle (Rice)

Ben E. Keith Company

FRESH OR FROZEN
FRUITS & VEGETABLES

Dallas . . Fort Worth . . Longview . . Abilene . . Lubbock . . Wichita Falls



**Complete Service
for All Makes of
Cars and Trucks**

AUTHORIZED
SALES  SERVICE
GENUINE FORD PARTS
& ACCESSORIES

LATE MODEL
Guaranteed
USED CARS

BANK ON
Frankston Hall Motors, Inc.

AUTHORIZED
SALES  PARTS SERVICE
ROSS and OLIVE PHONE RI-1441

Jimmy Hawn, 185, 6-2, 20, Junior, Athens. During his sophomore year Hawn demonstrated his worth by nabbing crucial passes. He caught 13 for 229 yards and two touchdowns.

Jerry Clem, 200, 6-1, 19, Sophomore, Texarkana. This aggressive lineman highly impressed the varsity coaches by his work with the 1950 freshmen and by his alert play in spring drills.

Bill Rippey, 175, 5-11, 20, Junior, Dallas. Rippey, a student in SMU's law school, proved to be a smart defensive signal caller and an excellent diagnoser of plays last season.

Sales and Leases

Suburban Business Property

MAJORS & MAJORS
Realtors

FIRST NATIONAL BANK BUILDING
Phone RIverside 3231

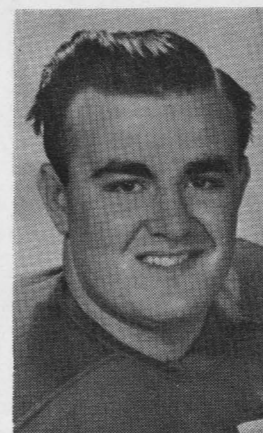
When in Dallas Visit the

Melrose Hotel

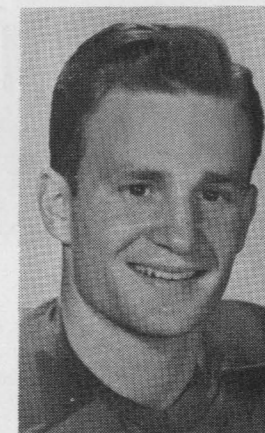
The Home of Visiting Athletic Teams

Oak Lawn at Cedar Springs

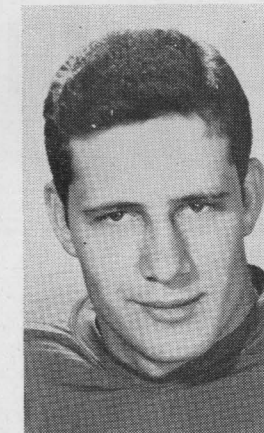
Phone LAkeside 5151



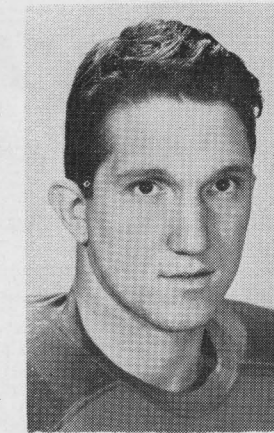
Hal Quinn
Guard (S.M.U.)



Sam Stollenwerck
Back (S.M.U.)



Bill Fox
Center (S.M.U.)



Jim Landers
Tackle (S.M.U.)

Spring and Brake Service

Wheels Aligned and Balanced

TRUETT-WORRALL CO.

718 N. Pearl St.

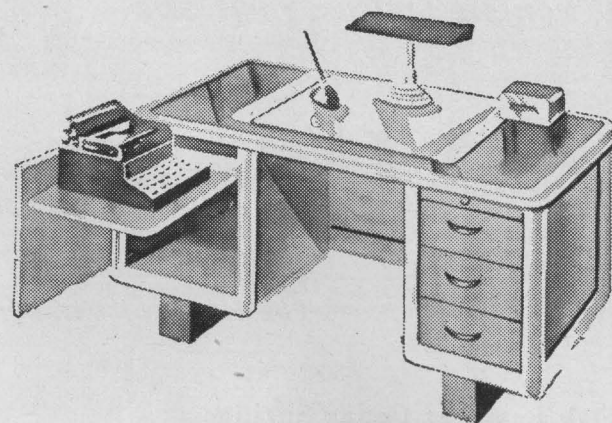
Phone RIverside -9824

Sam Truett

Gerald Worrall

For the OFFICE

TYPEWRITERS
 ADDING MACHINES
 DESKS
 CHAIRS
 FILES



Phone RAndolph-6441

Keeney OFFICE EQUIPMENT CO.

1913 COMMERCE

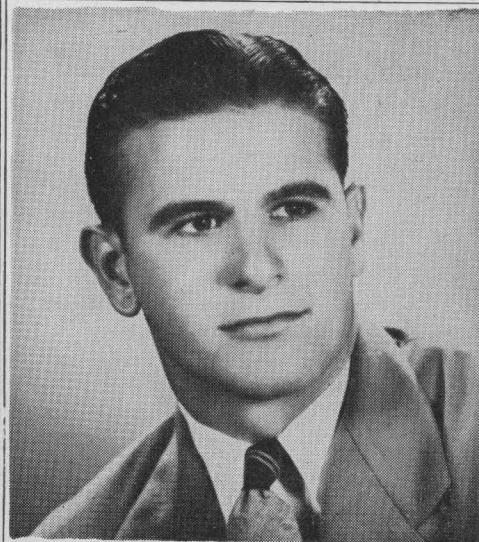
DALLAS

Ike Robb, 205, 5-10, 21, Senior, Big Spring. One of the most improved players on the squad, Robb, who played only 29 minutes as a sophomore, won a regular position at left guard on offense last season and played 295 minutes. His downfield blocking makes him a standout in most games.

Don Cole, 190, 6-0, 19, Sophomore, Gladewater. Cole started most of the 1950 freshman games as offensive center and fitted well into the SMU style of play.

Ralph Hendrickson, 215, 6-1, 19, Junior, Fort Worth. Hendrickson played at Masonic Home and Henderson County Junior College before entering SMU. He played 56 minutes as a sophomore and started one game for the Ponies.

Hal Quinn, 240, 6-2, 21, Senior, Dallas. Quinn, the heaviest man on the team, was an all-junior college tackle in 1948 at Arlington State College, which he attended after graduating from North Dallas High School. He played 84 minutes last year.



For Estimates on BUILDING MATERIALS . . . call PAUL PAGE

Northwest LUMBER COMPANY

Lumber and Building Material

DALLAS, TEXAS

10418 Garland Road

Telephone FA irdale - 2638

LIKE

steak?



Thick,
tender, juicy
steaks.
With appetizer, two
vegetables,
dessert
and coffee.

6209 HILLCREST
—opposite S.M.U.

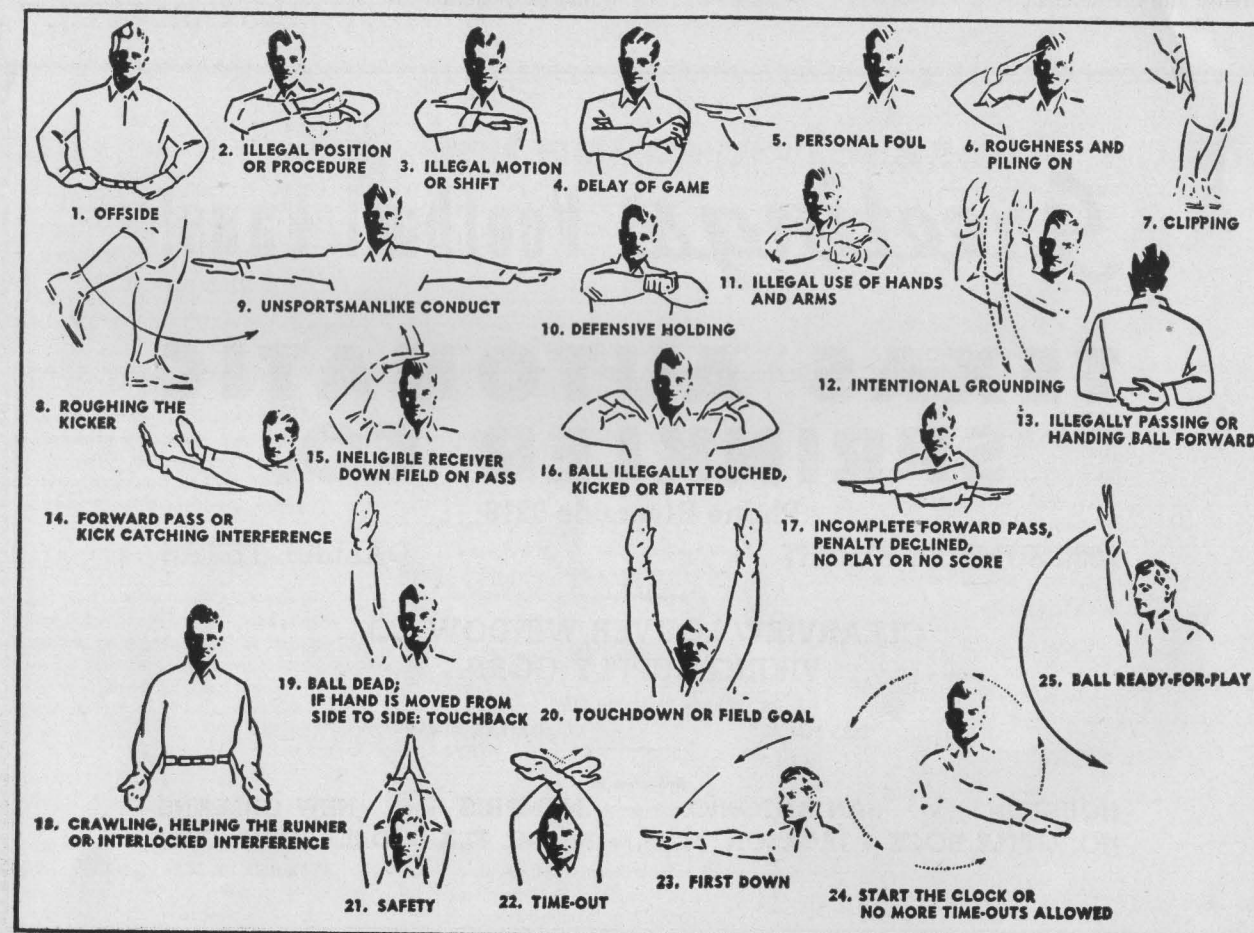
HOWARD JOHNSON'S

"Landmark For Hungry Americans"

Kyle Rote's Record at SMU

	1948*	1949	1950	Total		1948*	1949	1950	Total
Times carried ball	132	142	152	426	Times punted	11	22	41	74
Net yards gained	603	777	762	2142	Punting average	33.1	44.4	35	37.5
Number passes thrown	0	42	66	108	Kick-off Returns	2	6	14	22
Number passes completed	0	13	27	40	Yards gained kick-off returns	34	207	336	577
Yards gained on passes	0	158	490	648	Punt returns	0	1	0	1
Number passes caught	23	14	25	62	Yards gained punt returns	0	6	0	6
Yards gained passes caught	270	298	221	789	Touchdowns scored	8	12	13	33

*Includes game against University of Oregon in Cotton Bowl, January 1, 1949.



SOUTH DALLAS BANK & TRUST CO.

FOREST and COLONIAL



This bank opened for business August 1, 1942—rendering metropolitan banking service with suburban convenience.

MEMBER FEDERAL DEPOSIT INSURANCE CORPORATION

Jim Landers, 225, 6-4, 20, Sophomore, El Paso. Much is expected of this towering lineman who was held out of competition last season. Landers played center in high school and can be used as pivot in 1951 if the occasion arises.

Jack Gunlock, 195, 6-0, 20, Sophomore, Breckenridge. Gunlock starred for the Freshmen last season, spearheading the victory over the University of Texas Shorthorns. He plays equally well on both the offense and the defense.

Bob Hooks, 195, 6-2, 21, Junior, Edgewood. Although each of four other returning lettermen ends played more than twice as many minutes as he did last season, Hooks was so impressive in spring drills that some critics are predicting a starting role for him. He has shown equal ability on offense and defense and can maneuver from either right or left end.

Paul Turk, 235, 6-1, 22, Junior, New Orleans, La. Turk has the size and power to make the Ponies a good defensive performer this season. He saw 15 minutes of action last season.

Greetings Football Fans!

TEXAS AUTOMATIC SPRINKLER CO.

Phone Riverside-9216

2330 SUMMER STREET

DALLAS, TEXAS

CLEARVIEW LOUVER WINDOW CO.
VIKING SUPPLY CORP.

Phone Riverside 6071

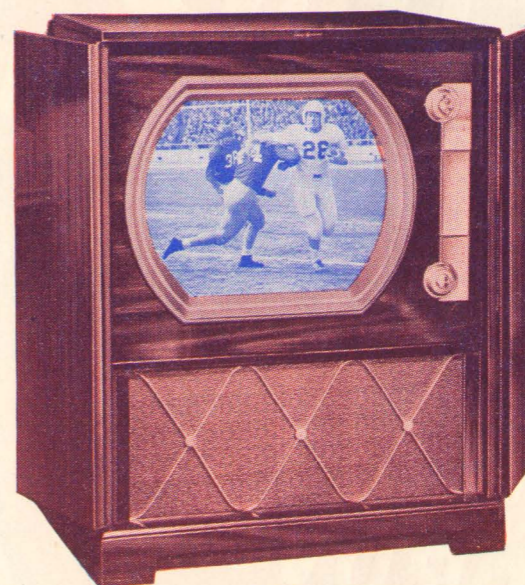
2625 ELM ST.

DALLAS, TEXAS

Branches in

HOUSTON • SAN ANTONIO • MEMPHIS • NEW ORLEANS
NO. LITTLE ROCK • JACKSON, MISS. • MIAMI, FLA. • OKLAHOMA CITY

TOUCHDOWN MUSTANGS!



24C101



- Before you buy any TV, be sure to see this new General Electric big 24 with its sharp, clear, lifelike pictures. Simple tuning, and all other G-E features. Genuine mahogany veneered cabinet mounted on non-marking swivel casters.

Tilman Babb and Gilbert Smith invite you to see this beautiful television set at . . .

WILSHIRE RADIO

6114 Mockingbird Lane

Sales and Service

Victor-8042

1951 - Southwest Conference Schedule - 1951

†Conference Game

*Night Game

SEPTEMBER 21

*Texas A.&M. vs. U.C.L.A. at Los Angeles

SEPTEMBER 22

SMU vs. Georgia Tech at Atlanta
Arkansas vs. Oklahoma A.&M. at Stillwater
†Baylor vs. U. of Houston at Houston
*TCU vs. Kansas U. at Fort Worth
Texas vs. U. of Kentucky at Austin

SEPTEMBER 29

SMU vs. Ohio State at Columbus
*Texas A.&M. vs. Texas Tech at Dallas
Arkansas vs. Arizona State at Fayetteville
†Rice vs. Clemson at Houston
TCU vs. Nebraska U. at Lincoln
Texas vs. Purdue U. at Lafayette

OCTOBER 6

*SMU vs. Missouri at Dallas
*Texas A.&M. vs. Okla. U. at College Sta.
†Arkansas vs. TCU at Little Rock
Baylor vs. Tulane at New Orleans
†Rice vs. L.S.U. at Baton Rouge
Texas vs. U. of N. Carolina at Austin

OCTOBER 13

SMU vs. Notre Dame at South Bend
*Texas A.&M. vs. Trinity at San Antonio
†Arkansas vs. Baylor at Waco
*Rice vs. Naval Academy at Houston
*TCU vs. Texas Tech at Lubbock
Texas vs. U. of Oklahoma at Dallas

OCTOBER 20

†*SMU vs. Rice at Dallas
†Texas A.&M. vs. TCU at Fort Worth
†Arkansas vs. Texas at Fayetteville
Baylor vs. Texas Tech at Waco

OCTOBER 27

†Texas A.&M. vs. Baylor at College Sta.
*Arkansas vs. Santa Clara at Little Rock
†Rice vs. Texas at Austin
TCU vs. U. of So. Cal. at Los Angeles

NOVEMBER 3

†SMU vs. Texas at Dallas
†Texas A.&M. vs. Arkansas at Fayetteville
†Baylor vs. TCU at Waco
Rice vs. Pittsburgh at Houston

NOVEMBER 10

†SMU vs. Texas A.&M. at College Sta.
†*Arkansas vs. Rice at Houston
†Baylor vs. Texas at Austin

NOVEMBER 17

†SMU vs. Arkansas at Dallas
†Texas A.&M. vs. Rice at Houston
Baylor vs. Wake Forest at Waco
†TCU vs. Texas at Austin

NOVEMBER 24

†SMU vs. Baylor at Waco
Arkansas vs. Tulsa U. at Little Rock
†Rice vs. TCU at Fort Worth

NOVEMBER 29

†Texas A.&M. vs. Texas at College Sta.

DECEMBER 1

†SMU vs. TCU at Fort Worth
†Baylor vs. Rice at Houston

**RICE INSTITUTE
FOOTBALL SQUAD**

10—Burk '53	B	19	5'11"	170
11—Nesrsta '54	B	20	5'9"	149
12—Burkhalter '52	B	21	5'10"	175
15—Haddox '53	B	19	5'9"	160
16—Warren '54	B	19	5'7"	150
19—Garbrecht '54	B	19	6'1"	190
20—Leggett '54	B	18	6'	170
21—Marsters '54	B	19	6'2"	175
22—Silver '52	B	22	5'10"	160
23—Heflin '54	B	20	6'2"	195
24—Drake '54	B	20	6'1"	188
25—Grantham '54	B	18	6'2"	180
26—Fenstermaker '54	B	19	6'2"	190
31—Riggs '52	B	21	5'10"	172
35—Frazier '53	B	20	5'10"	165
36—Daniels '53	B	20	6'	175
42—Whittaker '54	B	18	6'1"	187
43—C. Johnson '54	B	18	5'11"	177
44—Eubanks '53	B	20	5'9"	150
45—D. Johnson '54	B	19	6'	180
46—Spencer '54	B	19	5'11"	180
49—Biasatti '54	B	19	5'10"	184
50—Day '52	C	21	6'	200
54—Rhoden '53	C	18	5'11"	195
55—Rucka '54	C	20	6'3"	204
56—Moore '53	C	21	6'1"	210
59—Loth '54	C	20	6'1"	220
60—Verret '52	G	22	5'9"	190
61—Little '53	G	22	6'1"	205
62—Lee '54	G	19	5'11"	195
65—Hart '54	G	19	5'10"	190
66—Wagner '53	G	20	6'1"	198
67—Treadway '54	G	21	6'1"	201
69—Timmons '53	G	21	6'2"	210
70—Hudson '54	T	18	6'	210
71—Crockett '53	T	19	6'2"	203
73—Walls '52	T	22	6'3"	210
74—Wilson '54	T	20	6'	215
75—Watson '53	T	21	6'3"	202
77—Winship '54	T	19	6'	215
78—Chapman '54	T	18	6'5"	214
79—Edwards '54	T	20	6'2"	230
80—McCurry '52	E	21	6'4"	185
82—Allen '53	E	20	6'2"	172
83—Schroeder '54	E	18	6'4"	190
84—Howton '52	E	21	6'2"	180
85—Boughton '52	E	21	6'5"	200
86—Wright '52	E	21	6'1"	212
87—Dean '53	E	21	6'1"	180
89—Bridges '54	E	19	6'1"	178
90—Pontikes '53	E	20	6'1"	190
91—Fisk '54	E	20	6'	170

**SCIENCE
DISCOVERED IT
YOU CAN
PROVE IT-**



**SOUTHERN METHODIST
UNIVERSITY SQUAD**

14—S.Stollenwerck '54	B	18	5'9"	160
17—Mills '54	B	20	5'11"	170
18—Crawford '54	B	19	5'10"	175
20—Walker '53	B	21	6'1"	175
21—Musslewhite '53	B	20	5'11"	170
22—Gunlock '54	E	20	6'	195
24—H. N. Russell '52	B	20	6'2"	190
25—Moore '54	B	20	6'	185
26—Crisler '54	B	19	6'	180
33—H.Stollenwerck '52	B	20	5'11"	185
35—Knight '52	B	22	6'2"	200
36—D. Miller '53	B	19	6'2"	195
37—Hansen '54	B	20	6'2"	190
38—B. Forester '53	B	19	6'3"	220
40—I. D. Russell '52	T	22	5'10"	190
44—Norton '54	B	20	6'	185
45—Gillis '54	B	20	6'	180
47—Benners '52	B	21	6'3"	195
50—Thompson '53	G	21	6'1"	210
51—Hightower '52	C	21	6'1"	215
52—Fox '54	C	19	6'	190
54—Cole '54	C	19	6'	190
57—Landers '54	T	20	6'4"	225
61—Partee '53	T	21	6'1"	205
62—Lafitte '54	G	20	5'11"	195
63—Riley '53	G	21	5'11"	205
64—Robb '52	G	21	5'10"	205
66—Turk '53	G	22	6'1"	235
67—H. Forester '52	G	20	6'	220
68—Ligon '53	T	19	5'9"	210
69—McAtee '54	G	21	5'11"	165
70—Mayo '54	T	20	6'2"	185
71—Clem '54	T	19	6'1"	200
73—Cadwallader '53	T	23	6'1"	215
77—Quinn '52	G	21	6'2"	240
78—L. Miller '54	T	21	6'1"	190
79—Hendrickson '53	G	19	6'1"	215
80—Mahew '54	E	20	6'1"	190
81—Tunnell '53	E	23	6'2"	180
82—Hawn '53	E	20	6'2"	185
83—Dean '53	T	20	6'	185
84—Riphey '53	E	20	5'11"	175
85—Litowkin '54	E	23	6'	185
86—White '52	E	21	6'4"	205
88—Powell '53	E	21	6'2"	200
89—Hooks '53	E	21	6'2"	195

**"NO UNPLEASANT
AFTER-TASTE"**

WHEN YOU SMOKE

CHESTERFIELD

**MORE COLLEGE MEN AND WOMEN BUY
CHESTERFIELD THAN ANY OTHER CIGARETTE**



Since 1902
For All Sports
For All Teams

CHAMPIONSHIP QUALITY!

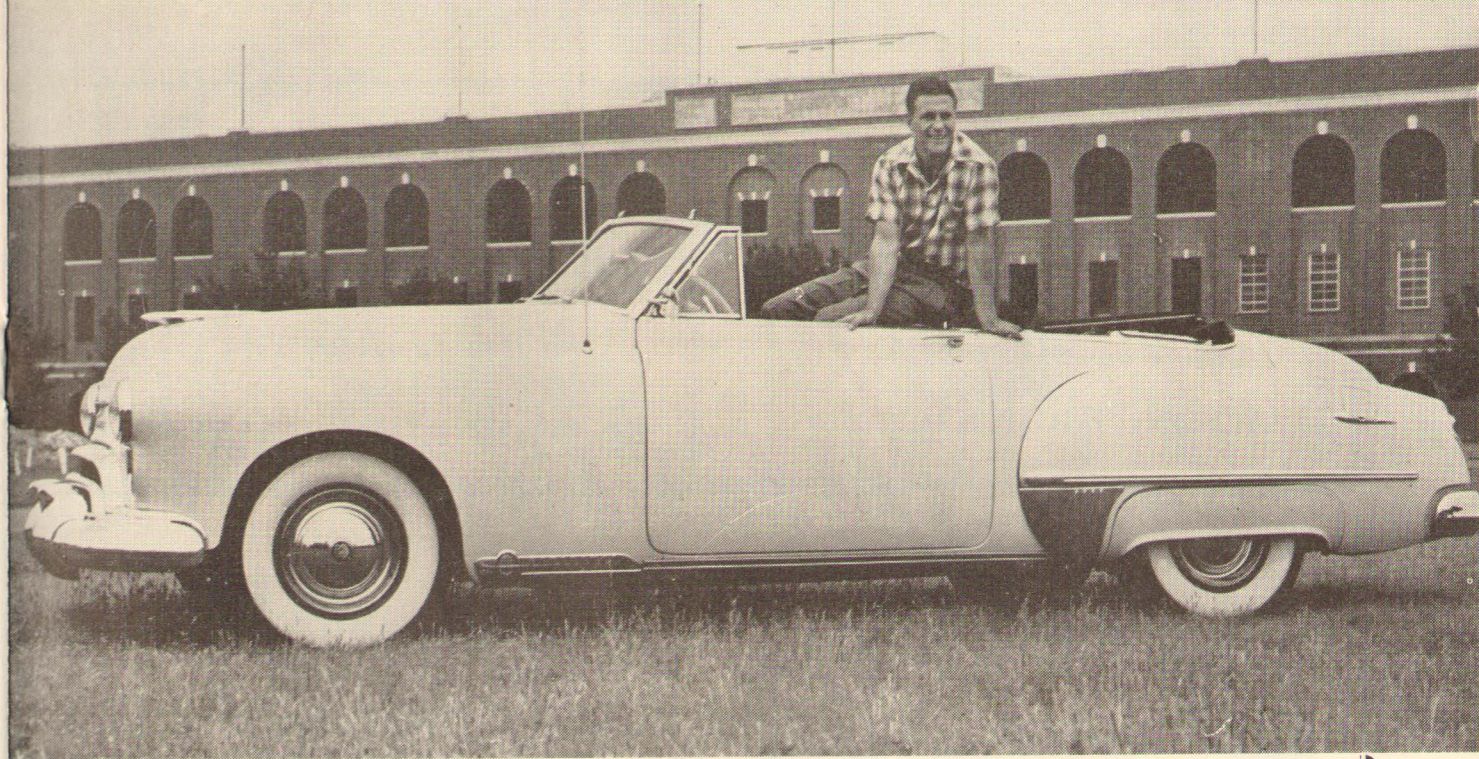
It takes QUALITY to build a Champion . . . and Championship Quality Athletic Equipment & Uniforms are indispensable to a winner! Many of this game's stars have worn Cullum & Boren equipment since childhood on, many have scored to win acclaim with a Cullum & Boren ball.

ATHLETIC EQUIPMENT & UNIFORMS

Outfitted by Experts Who Equip the Championship College, High School,
and Professional Teams



The Sporting Goods Department Store Since 1902



All Americans Become Partners

DOAK WALKER, S.M.U.'S *All-American*
Selects

OLDSMOBILE'S

All-American Futuramic Convertible
with the Famous *ROCKET MOTOR!*


Yes, DOAK obtained his Oldsmobile from

TRIANGLE MOTORS

DALLAS' EXCLUSIVE OLDSMOBILE DEALER

Riverside - 9851

2312-20 Cedar Springs at Maple



W. E. (Cully) CULWELL

Ladies' and Men's Wear

ACROSS FROM S.M.U.

DOAK RALEIGH
WALKER — BLAKELY

Mustang Gulf Servicenter

We Will Appreciate Your Business

6511 Hillcrest (at Haynie) LA-1922

★ Why of course, the Season's Favorite

Sammy's Restaurants

For that "AFTER THE GAME" Dinner

VISIT
Any One of These Convenient Restaurants

★ SAMMY'S • Oak Lawn at Irving

★ SAMMY'S • 1601 Greenville

★ SAMMY'S • Highland Park Shopping Village

★ SAMMY'S • Drive-In—1516 Greenville

★ SAMMY JR. CAFE • Forest at Colonial

A Menu Full of DELICIOUS FOODS Cooked to Your Liking

STEAKS AND CHOPS

DELICIOUS SALADS

MEXICAN DISHES

ITALIAN SPAGHETTI

ITALIAN PLATES

FRIED CHICKEN

AND SO MANY MORE INTERESTING DISHES



PREFERRED BY PEOPLE WITH Good Taste

ROSCOE WHITE'S

B B B A L

S.M.U.'s

Favorite DRIVE-IN

Hickory Smoked Barbecue Beef, Ribs, Chicken and Ham

DINING ROOM AIR CONDITIONED CURB SERVICE 5418 Mockingbird Lane

RICE LINE-UP (OFFENSE)

			C Day 50			
LE Howton 84	LT Walls 73	LG Little 61	RG Wagner 66	RT Crockett 71	RE McCurry 80	
			QB Drake 24			
			FB D. Johnson 45			
				RH Burkhalter 12		
						LH Riggs 31

S.M.U. LINE-UP (OFFENSE)

			C Hightower 51			
LE Powell 88	LT L. Miller 78	LG Robb 64	RG H. Forester 67	RT I. D. Russell 40	RE White 86	
			QB Musslewhite 21			
			FB Knight 35			
				RH H. N. Russell 24		
						LH H. Stollenwerck 33

After the Game Visit

Harrell's

COURTEOUS SERVICE PROMPT DELIVERIES

★

PHARMACIES

E. C. (DOC) HARRELL, Proprietor

6348 GASTON AVENUE
In Lakewood — TAylor-5175

6327 HILLCREST AT McFARLIN
Across from SMU — LAkeside-4156

A New and Modern Plant For Your Satisfaction

Daniel Cleaning Co.

Phone LAkeside 9927

6309 Hillcrest Dallas 5, Texas


S.M.U. LINE-UP (DEFENSE)

			C Hightower 51			
LE Rippy 84	LT B. Forester 38	LG H. Forester 67	RG Robb 64	RT Hooks 89	RE Knight 35	
			QB Crisler 26			
			FB I. D. Russell 40			
				RH H. N. Russell 24		
						LH Walker 20

RICE LINE-UP (DEFENSE)

			C Treadway 67			
LE Howton 84	LT Chapman 78	LG Crockett 71	RG Rucka 55	RT Hudson 70	RE McCurry 80	
			LB Rhoden 54			
			S Nesrsta 11			
				RH Burkhalter 12		
						LH Silver 22

THE KIRBYBURGER



PIG STAND

3715 Greenville Ave. Near Granada Theater

PIG STANDS, INC.

Give You All Three Good Food! Good Service! Good Value!



OFFICIALS

Referee—RAY McCULLOCH
Umpire—BAILEY McELREATH

Crater's Pig'n Whistle Restaurant

1336 N. ZANGS BOULEVARD ...

OFFICIALS

Linesman—LON EVANS
Field Judge—JOHNNY MORROW

Headquarters for "Hungry Souls"

- FRENCH FRIED JUMBO SHRIMP
- SPAGHETTI AND MEAT BALLS
- FISH DINNERS
- KC STEAKS

... JUST OPPOSITE CLIFF TOWERS HOTEL

Meet Me at

Kingsway Grill
3230 KNOX STREET

★

Easyway Grill
5806 LOVERS LANE



ENERGY

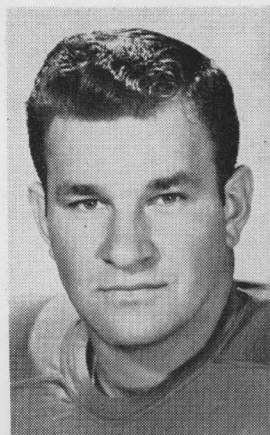
● OAK FARMS HOMOGENIZED MILK packs a wallop of energy. It takes a lot of energy for the game, whether it be football or business, school or play.

● Get OAK FARMS MILK at your food store and you get the best for quick energy and better health.

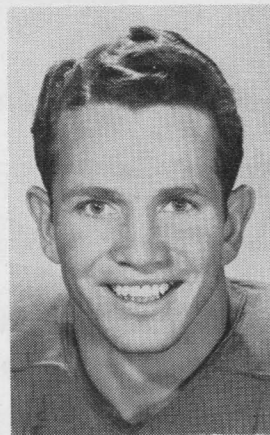
"YOUR GROCER IS YOUR BEST MILKMAN"

HOMOGENIZED

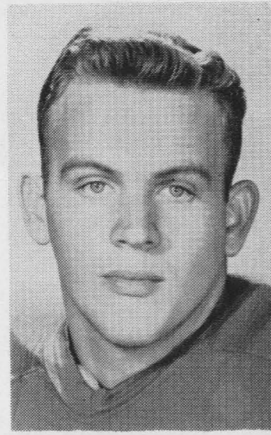
OAK FARMS MILK



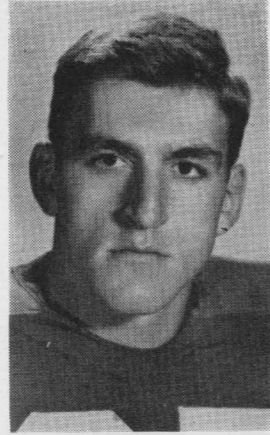
Bob Cadwallader
Tackle (S.M.U.)



Val Joe Walker
Back (S.M.U.)



Dave Riley
Guard (S.M.U.)



Al Hansen
Back (S.M.U.)



"Easy
Budget
Terms"

COMPLETE Chevrolet Service

1901 Ross Avenue

Phone RI verside - 6001

Doak Walker's Record at SMU

Here is Doak Walker's 4-year statistical record at Southern Methodist University. The 1947 figures include the 1948 Cotton Bowl game, and the 1948 figures include the 1949 Cotton Bowl game.

	1945	1947	1948	1949	Total		1945	1947	1948	1949	Total
Number games played	5	11	11	8	35	Number punt returns	15	20	10	5	50
Times carried ball	68	181	122	130	501	Yards punt returns	238	256	169	87	750
Net gain rushing	289	740	598	449	2,076	Kick-off returns	5	10	5	6	26
Forward passes thrown	65	60	56	58	239	Yards gained kick-off returns	115	379	161	101	756
Forward passes completed	38	34	32	35	139	Touchdowns	5	12	12	11	40
Net gain forward passes	387	411	383	605	1,786	Conversions attempted	0	24	31	22	77
Number passes caught	2	8	16	3	29	Conversions made	0	19	24	17	60
Yds. gained passes caught	32	132	285	26	475	Field goals made	0	1	0	0	1
Number times punted	11	15	36	23	85	Total points scored	30	94	96	83	303
Punting average	31.3	33	44	41.7	39.6						

TOM THUMB

The

All-American

Grocery Boy



This Year it's
HUDSON



- *The Car of Distinction
and Smooth Performance*

THE DALLAS HUDSON CO.

X. R. GILL, *President*

510 N. Pearl Street

Dallas, Texas

★ David Powell, 200, 6-2, 21, Junior, Portland, Ore. Powell, who played defensive halfback at times last year, is also an effective offensive end because of his blocking. He caught 10 passes for 100 yards as a sophomore.

★ Don Miller, 195, 6-2, Junior, Bellville. Miller was ineligible last year because of the transfer rule, but playing against the varsity in scrimmages he indicated that he would prove helpful to the 1951 varsity.

DOC WIDEMAN GARAGE

Hillcrest and Daniels

Across from Hillcrest State Bank

LAkeside 9434 — LAkeside 4330

—*Front End Alignment*—

"Our Specialty"

Best Wishes **MUSTANGS!**

LAUNDRY, DRY CLEANING
and EXPERT ALTERATIONS

1 Day Service—SHIRTS AND
—DRY CLEANING

(buttons replaced and minor repairs made free of charge)

Laundry
SUPREME
 ALL THAT THE NAME IMPLIES

3406 Asbury

LOgan-1709

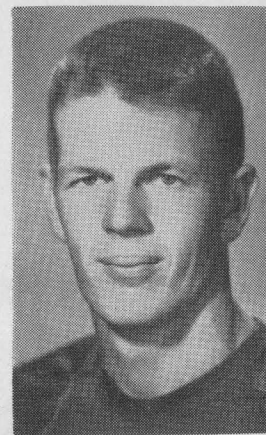


FOR MEN . . .

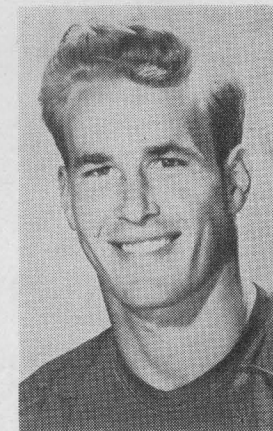
who appreciate quality, Gus Roos is the place to go in Dallas for famous names in everything from hats to shoes . . . for men of impeccable taste, Gus Roos is the place to go with complete confidence.

ELM
AKARD

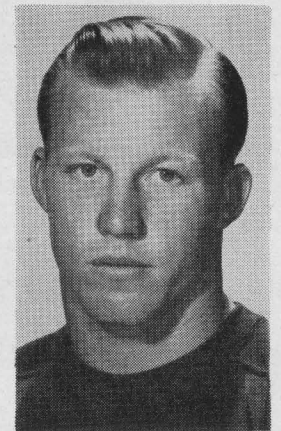
Roos Corner



David "Kosse" Johnson
Back (Rice)



Sonny McCurry
End (Rice)



Dickie Bob Haddox
Back (Rice)

Invest
SURPLUS FUNDS or MONTHLY SAVINGS
in the METROPOLITAN

Each Account INSURED up to \$10,000

**METROPOLITAN
 BUILDING & LOAN ASSOCIATION**

1400 Main Street

DALLAS

RI verside - 5103

PEYTON L. TOWNSEND, *President*

**UNDER THIS SIGN YOU ENJOY
THE MOST CONVENIENT
SHOPPING IN TEXAS.**

**WE'RE OPEN NOW
AND TILL ELEVEN TONIGHT
... STOP BY AFTER THE GAME.**



**Listen to Ves Box on 7-ELEVEN'S PRE-GAME PREVIEW
every Saturday afternoon on KRLD, just before the game . . .**

SMU All-Americans

Seven former SMU players are listed as All-Americans in the Official NCAA Football Guide. In addition to those listed below, several others were named on teams chosen by individual newspapers and other selectors but not included in the Guide.

- | | |
|----------------------------|--------------------------|
| 1929—Marion Hammon, tackle | 1935—J. C. Wetsel, guard |
| | Bobby Wilson, back |
| 1934—Clyde Carter, tackle | 1947—Doak Walker, back |
| Bobby Wilson, back | 1948—Doak Walker, back |
| 1935—Truman Spain, tackle | 1949—Doak Walker, back |
| | 1950—Kyle Rote, back |

Bowl Games Played by SMU

- | | |
|-----------------------------|---------------------------|
| Jan. 1, 1936....Rose Bowl |SMU 0, Stanford 7 |
| Jan. 1, 1948....Cotton Bowl |SMU 13, Penn State 13 |
| Jan. 2, 1949....Cotton Bowl |SMU 21, Oregon 13 |

**SMU Ponies Who Have Played in
East-West Shrine Game**

- | | |
|------------------------|------|
| Clyde Carter | 1935 |
| Abe Croft | 1944 |
| Ray Fuqua | 1935 |
| Jack Halliday | 1950 |
| Preston Johnston | 1944 |
| Louie Long | 1930 |
| Gerald Mann | 1928 |
| Weldon Mason | 1932 |
| Dick McKissack | 1950 |
| Kyle Rote | 1951 |
| Jack Sanders | 1940 |
| Paschal Scottino | 1937 |
| Doak Walker | 1946 |
| Eugene Wilson | 1947 |
| Jim Sid Wright..... | 1947 |



After the Game - Visit the

MIDWAY

Have FUN, THRILLS and SPILLS
LINDSEY, PUGH & MURPHY

When Was SMU Founded?

In 1911, by Methodists of this territory. Dallas Hall was begun in 1912, and the first session of SMU opened in the autumn of 1915, with an enrollment of 706 students.

Where Is SMU Located?

In University Park, about seven miles from downtown Dallas. The University is built on the highest ground in University Park, and that's why the campus is called The Hilltop.

From Where Do SMU Students Come?

From nearly all Texas counties, from forty-five states, and from thirteen foreign countries. Dallas County contributes about half the total enrollment.

What Is the Over-all Value of SMU?

Its campus, equipment, assets, and endowment total more than \$22,000,000.

Yea! Mustangs!

**—When in need of FIRST CLASS
Workmanship and Materials—**

Remember . . .

C. WALLACE PLUMBING CO.

SAM P. WALLACE

C. WALLACE

FRANK E. WALLACE

2224 Summer Street

DALLAS, TEXAS



Compliments

of the

AMERICAN LIBERTY COMPANIES

T. L. WYNNE

How Many Schools or Branches Are Included in SMU?

Degrees are offered in eight schools. On the campus are the College of Arts and Sciences, the School of Business Administration, the School of Engineering, the Graduate School, the School of Law, the School of Music, and the Perkins School of Theology. Dallas College is located at 500 N. Akard. An Oak Cliff branch of Dallas College is at 336½ W. Jefferson. SMU also operates Correspondence and Extension divisions.

How Big Is the SMU Campus?

The campus proper takes in 133 acres, from Mockingbird Lane on the South to Daniels Avenue on the north; from Hillcrest on the west to Airline Road on the east.

Who Owns and Controls the School?

The South Central Jurisdiction of The Methodist Church. Perkins School of Theology at SMU is the official training seminary for Methodist ministers of the Jurisdiction.

The
CO-OP
Sells
It
University Book Store

ON-THE-CAMPUS

LOgan 1662



It Likes You



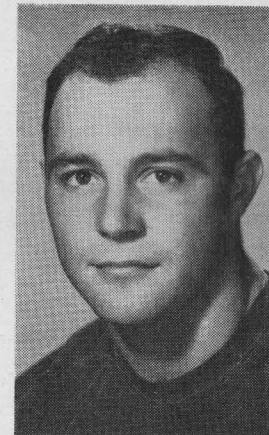
Today is The Day
WE HOPE YOU ENJOY THE GAME
AND . . . *Insure your future with*

"Serving
Since
1908."

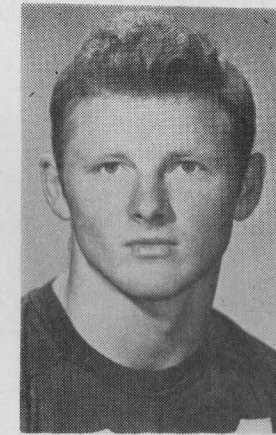
Southland Life

INSURANCE COMPANY
W. C. McCORD, President Home Office DALLAS

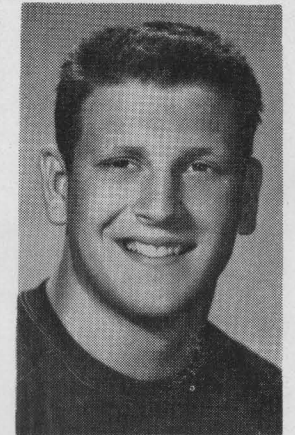
LIFE • ACCIDENT • HEALTH • HOSPITALIZATION



Gino Biasatti
Back (Rice)



Bill Howton
End (Rice)



Don Whittaker
Back (Rice)

CON-RO

BRAND

Sportswear

615 N. GOOD ST.

DALLAS, TEXAS

The Store with Texans in mind

You Call The Right Signal
When You Call . . .



Count Mayes
Collis Irby

Irby-Mayes brings you the best in
fashion clothes for Dallas and Texas.
Drop in and let us show you the finest.

"Rusty" RUSSELL *Mustang's Head Coach*

H. N. Russell, head football coach at Southern Methodist University, began his athletic career as a basketball player for Howard Payne Academy in Brownwood.

He played football for Howard Payne College in 1915, 1917, 1920 and 1921. In those days athletic scholarships that took care of room, tuition, board, laundry, books, and incidentals were unknown, and Mr. Russell dropped out of school from time to time to earn money with which to continue his education. He also served two years in the Army during World War I, seeing action in France.

After receiving his degree in 1922, Mr. Russell coached that fall at Granger, where he developed a strong team. For the next four years he was at Temple High, serving as assistant coach two years and as head coach two seasons. In 1927 he became head coach at Masonic Home, Fort Worth, where he and his Mighty Mites gained national recognition for their achievements upon the gridiron. With small squads, he developed elevens that grasped the imagination of the public by their smart, alert, aggressive play. In the sixteen years that he coached them, the Mites won 132 games, tied nine, and lost 30. For four seasons they were undefeated in high school competi-

tion, and the 1931 team set a record for high school scoring with 425 points.

During the years that he coached the Masonic Home in the highest bracket of the interscholastic league, his teams won six district titles, tied for another, lost in bi-district twice, went to the semi-finals three times, and to the finals once, where they lost to Corsicana on penetrations.

From Masonic Home Mr. Russell went to Highland Park as coach. There his teams won 27 games, lost four, and tied two contests. The 1943 team lost to San Angelo 20 to 21 in the semi-finals and the 1944 club was defeated by Port Arthur 20 to 7 in the finals.

In February, 1945, Mr. Russell became acting head coach at SMU, with the understanding that he would be first assistant coach when Commander Matty Bell returned from duty with the USNR. Coach Bell resumed his duties with the Mustangs in September 1945 and the Ponies finished second in the conference, employing the offensive taught them by Mr. Russell. The 1946 Mustang team won only two conference games but the 1947 and 1948 clubs annexed the conference championships.

In 1950—Mr. Russell's first year as head coach—the Mustangs won six games and lost four.

S.M.U. Coaching Staff



Front row, left to right:—Clinton "Red" McClain, Herman "Sleepy" Morgan, Tom Dean
Back row, left to right:—H. N. "Rusty" Russell, E. O. "Doc" Hayes, McAdoo Keaton, Herman Cowley

Compliments of . . .

MILLER-JOHNSON Grocery Co.

WHOLESALE GROCERS

3314 MEADOW

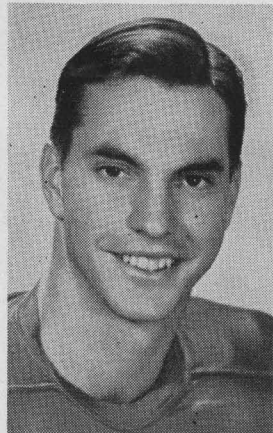
HAwood - 7658

WILCOX LUMBER CO.

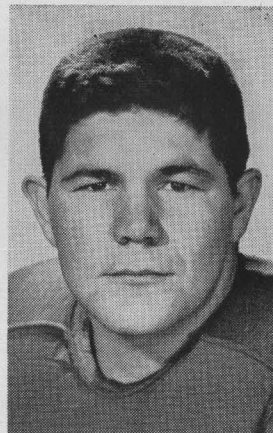
Quality Building Materials

4615 Cole Avenue

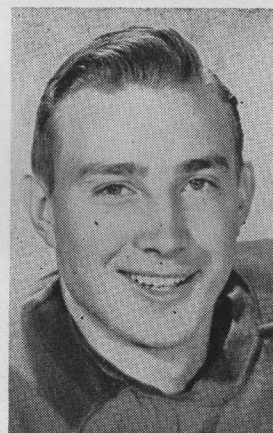
LAkeside-4164



Jimmy Hawn
End (S.M.U.)



Paul Turk
Guard (S.M.U.)



Lou Miller
Tackle (S.M.U.)

Compliments of . . .

MAXWELL A. CLAMPITT

FARWELL COMPANY, INC.

★ ★ ★

Mechanical Contractors

PLUMBING

HEATING

AIR CONDITIONING



DALLAS ★ SAN ANTONIO

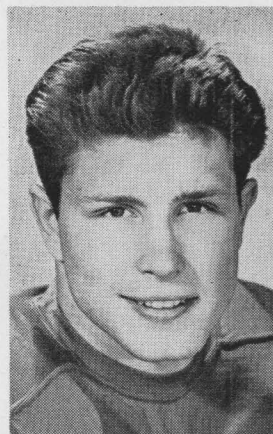
The Loaf BEST KNOWN
by the Customers it keeps!



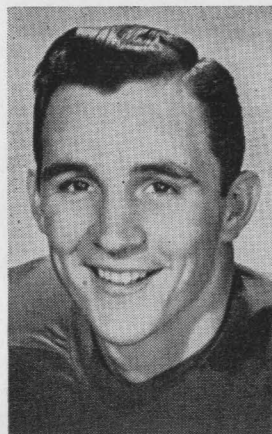
H. N. Russell, Jr., 190, 6-2, 20, Senior, Dallas. "Little Rusty," who had called every offensive play for the Mustangs in their final game of the 1949 season when they lost a dramatic contest to Notre Dame 20 to 27, started off at a rapid pace last year. After the Ponies' victories over Georgia Tech, Ohio State, and Missouri, he was leading the conference in percentage of passes completed with a record of .750, was No. 1 in pass receiving with 281 yards gained and three touchdowns, and was tied for third in scoring. A severe injury suffered in the Missouri game sidelined him for a month, but he wound up the season with a pass completion percentage of .682 and with 18 passes caught for 223 yards.

Alex Litowkin, 185, 6-0, 23, Sophomore, Erie, Pa. Experience in service football enabled Litowkin to prove himself a real football player soon after freshman drills started last year. His work as defensive right end on the frosh team stood out in several of the Colt games.

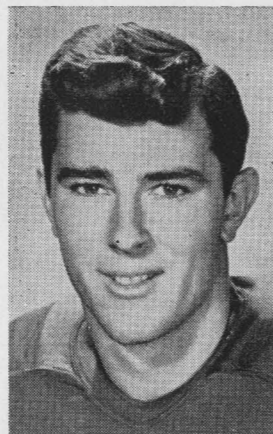
Dick Hightower, 215, 6-1, 21, Senior, Tyler. High-tower, who played 240 minutes in 1949 and 358 in 1950, is the Southwest's outstanding candidate for a line position on the 1951 All-America team. He is rated by many critics as the best center to play in the Southwest Conference since the days of Ki Aldrich. Hightower excels on both the offense and defense.



Bill Crisler
Back (S.M.U.)



Jerry Norton
Back (S.M.U.)



Benton Musslewhite
Back (S.M.U.)

Go CONTINENTAL-TRAILWAYS

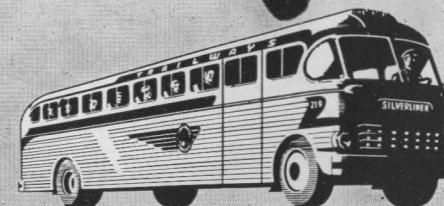
CHARTER BUSES
For Group Travel

THRU-LINER SERVICE
ACROSS THE NATION

NO PARKING
PROBLEMS

NO TRAFFIC
WORRIES

LOW COST
FARES



"Always Going Your Way"

A LEADING SOUTHWEST TEAM SINCE 1875

Complete Household Goods Services

• MOVING • PACKING • STORAGE

Over 75 Years of Experience and Leadership
The Southwest's Greatest Distributing Organization

MERCHANDISE DISTRIBUTION — DISPLAY SPACE — HEAVY HAULING

CALL RAndolph-7111

GUS K. WEATHERED
President

C. E. BRADLEY
Vice-President

R. M. WASKOM
Secretary-Treasurer

Established 1875

Dallas Transfer
**AND TERMINAL
WAREHOUSE CO.**

2ND UNIT SANTA FE BLDG.



Bill Crisler, 180, 6-0, 18, Sophomore, Dallas. Crisler, a star at Highland Park in his high school days, developed into a fine defensive player during the spring drills and is due to see lots of action during his sophomore year.

Gene Gillis, 180, 6-0, 20, Sophomore, Ysleta. A triple-threatener, Gillis is one of the most promising of the newcomers to the varsity.

Jerry Norton, 185, 6, 20, Sophomore, Texarkana. Norton was the leading ground gainer for the undefeated freshman team last season, possessing the ability to break loose for long gains as well as to make short distances when needed.

Gayle Mills, 170, 5-11, 20, Sophomore, Port Arthur. As wingback on the Freshman eleven last fall, Mills accounted for numerous long gains.

BEST WISHES
to the
MUSTANGS

... *A Friend*



Our 80th Season

for an All-Star team of famous
names in men's apparel . . .
for playing a "quality" game



E·M·KAHN & CO.

MAIN AND ELM AT LAMAR



Val Joe Walker, 175, 6-1, 21, Junior, Seminole. Walker was one of the few first-year men to win regular positions in the Southwest Conference last season. Stationed at left half on the defense, Walker reminded critics of Paul Page, SMU great of a few years ago. He was used occasionally on the offensive and his work there warrants the prediction that he will be used more frequently as a ball carrier in 1951. His big game last year was against Oklahoma A&M when he scored three touchdowns.

Co-Captain Herschel Forester, 220, 6-0, 20, Senior, Dallas. Because of his steady play, Forester was named on the Players' All-Conference team last year, one of the highest honors a gridder can receive. A fine blocker, Forester will be used at guard on offense. Agile and aggressive, he will be used at tackle on defense.

Bill Fox, 190, 6-0, 19, sophomore, Norman, Okla. In spring training Fox proved to be an excellent diagnoser of plays and a sure and deadly tackler.

BEN GRIFFIN
Auto Co.

For Service That Lasts
Get to BEN GRIFFIN Fast



SALES - SERVICE - PARTS

1601 So. Ervay • DALLAS 1, TEXAS • Phone: HARwood-7301



GO TO THE GAMES with HUMBLE

The Humble station in your neighborhood is football headquarters. It has full details of Southwest Conference football schedules, road maps and other information.

Stop there before you start this year's football trips so that your car will perform better, look better, as you drive to the games:

Have your car washed and lubricated; change the oil to Esso Extra (best you can buy!);

let the driveway salesman check your battery, your radiator, your fan-belt, your tires; and fill up with Esso Extra gasoline for extra performance on every mile you travel.

Then . . . on your way . . . stop for service under the Humble sign. Humble rest rooms are extra clean, Humble service is friendly, courteous and prompt . . . Again this year, go to the games with Humble!

HUMBLE OIL & REFINING CO.



KERN TIPS
Houston



CHARLIE JORDAN
Dallas



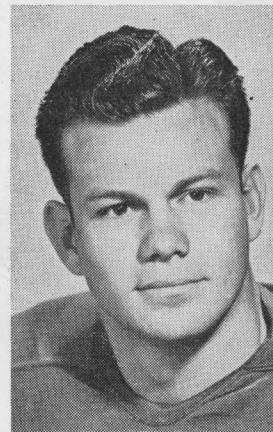
BILL MICHAELS
San Antonio



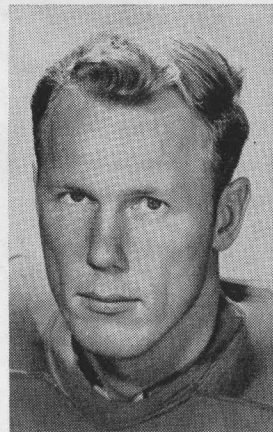
VES BOX
Dallas

Tune in Humble's broadcasts of the Southwest Conference games you just can't see. This quartet of top-notch sportscasters will be on the air each weekend. This is another extra service under the Humble sign!

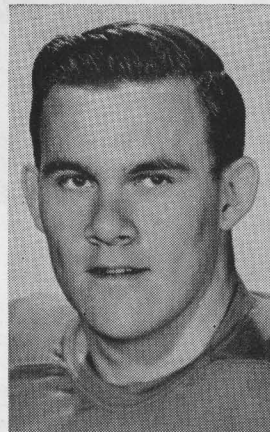
See Humble's FOOTBALL FILMS on TV — Sundays



Darrell Lafitte
Guard (S.M.U.)



Pat Knight
Back (S.M.U.)



Jack Gunlock
End (S.M.U.)



General Electric
Appliances



CALL US

FOR SERVICE
SAFETY AND

GOOD YEAR

Tires



DUNLAP-SWAIN
PRESTON ROAD AT MOCKINGBIRD LANE
LAKESIDE-2445

Our Highland Park Station open 7 A.M. to 10 P.M. to take care of your needs.

Other Stores at 638 WEST JEFFERSON—HARWOOD and PACIFIC
3807 PARRY AVENUE—3703 NORTHWEST HIGHWAY

MONEY SPENT AT THESE LOCATIONS WITH THIS COMPANY STAYS IN DALLAS

OUR BUSINESS IS A 100 PER CENT DALLAS ORGANIZATION

Owned, Managed and Personally Supervised by

DEVEREUX DUNLAP and JACK R. SWAIN

1950 LETTERMEN RETURNING And Number Minutes Played in 1949-1950

Ends—	1949	1950
Jimmy Hawn	*	220
Bob Hooks	*	85
Dave Powell	*	171
Bill Rippey	*	207
Ben White	67	274
Tackles—		
Harry Dean	*	165#
Buford Partee	*	65
Wayne Ligon	*	72
Guards—		
Herschel Forester	204	358
Ralph Hendrickson	*	56
Hal Quinn	*	84
Ike Robb	29	295
Centers—		
Dick Hightower	240	358
Backs—		
Fred Benners	55	108
Bill Forester	*	167
Pat Knight #	221	394
Benton Musslewhite	*	188
I. D. Russell	228	274
H. N. Russell, Jr.	131	190
Henry Stollenwerck	80	48**
Val Joe Walker	*	229

*—Did not play in 1949

#—Played end in 1950

##—Played end on defense

**—Henry Stollenwerck was out with injuries the last seven games of 1950

How Many Permanent Buildings Are on the SMU Campus?

Twenty-Four, not including fraternity houses. New buildings in the University's present expansion program are a seven-building quadrangle for the Perkins School of Theology, two buildings for the Legal Center, Peyton Hall, a new dormitory for women, and the Fondren Science Building.

Is SMU Tax-Supported?

What Are Its Sources of Income?

As a privately owned institution, SMU receives no tax revenues. Operating funds come from these major sources: tuition and fees of students, income from investments, gifts for buildings and endowment, and regular contributions for current operating expenses from Dallas business firms and businessmen.

How Many Students Are Attending SMU?

Enrollment averages about 5,000 students on the campus. About 2,500 more attend Dallas College. Some 675 students are taking correspondence work. Approximately 45,000 have attended SMU since opening of the University's first session.

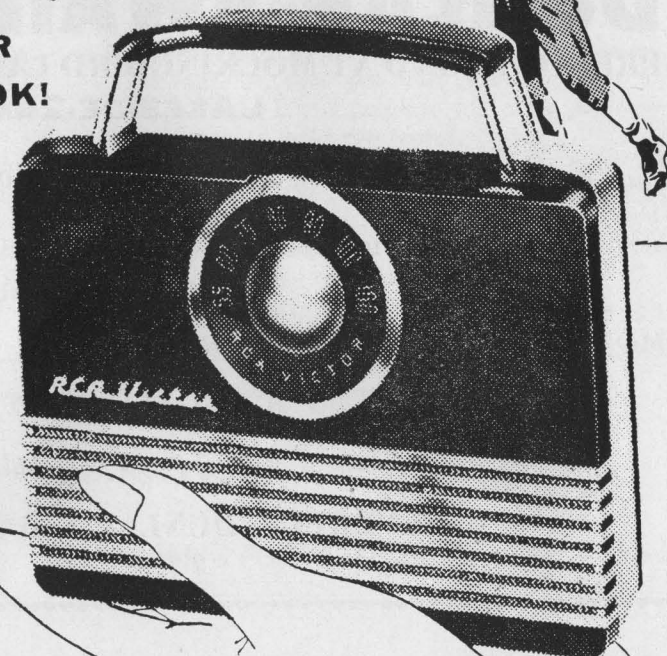
What Is the Academic Standing of SMU?

SMU and its various schools have long been accredited by the top educational standardizing agencies of the country. The University recently has been awarded recognition by Phi Beta Kappa, highest scholarship society in the United States.



Everywhere you go
RCA VICTOR'S NEWEST "PERSONAL"
 makes beautiful music...

**NO BIGGER
 THAN A BOOK!**



RCA-Victor "Personal"

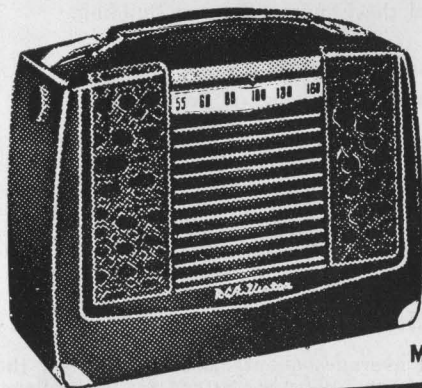
GET IT AT SKILLERN'S, ONLY **29⁹⁵** Plus Tax

5.00 DOWN — 5.00 MONTH

Fits in the pocket of your coat—wonderful to take to football games, listen in to other scores . . . keep it with you at home, on the campus, everywhere you go it will be a wonderful companion. RCA-Victor miniature tubes, new built-in antenna and powerful battery insure excellent performance.

Model B411
 Complete With
 Batteries . . \$32.58

SEE IT AT SKILLERN'S—HAVE ONE FOR THE NEXT GAME!



MODEL BX57

Complete With Batteries, 42.20

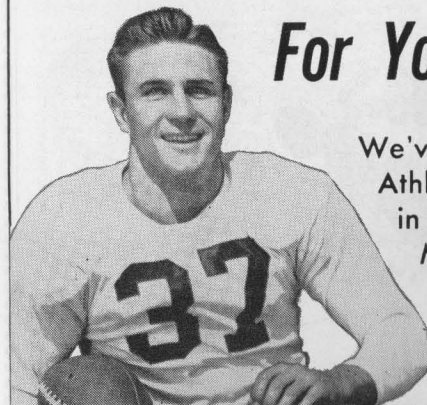
... And Here's Another Honey of
 A Portable by RCA-Victor

A lightweight to carry, a heavyweight for performance. Plays on AC or DC current and on its own batteries . . . carry it like a briefcase!

36⁹⁵ Plus Tax



**BUY RCA-VICTOR
 RADIOS AND
 TELEVISION ON
 SKILLERN'S EASY
 TIME PAYMENTS**



For Your Sports Goods see ole Doak!

We've got a complete line of Sports Goods including all sorts of Athletic Equipment, Keds, Jeans, Toys, Hobbies, Fishing Tackle, in fact, everything for the sports-minded. "Dub" Boyer, former Mustang tennis star, will be on hand at all times while I'm away from Dallas with the Detroit Lions. Make the DOAK WALKER SPORTS CENTER your headquarters for all your Sports requirements.

DOAK WALKER SPORTS CENTER, INC.

84 Highland Park Shopping Village • Phone LAkeside 2697



Fred Benners' Record as Passer



Game	Min. Played	1950					1949*						
		Passes Att.	Passes Comp.	Passes Intepd.	T.D. Passes	Yards Gained	Passes Att.	Passes Comp.	Passes Intepd.	T.D. Passes	Yards Gained		
Georgia Tech	3	3	1	0	0	8	Rice	8	16	9	1	1	131
Ohio State	13	34	19	1	4	306	Kentucky	11	9	6	1	1	101
Missouri	10	22	14	1	0	119	Texas	6	10	5	2	1	72
Okla. A&M	4	8	5	0	1	121	A&M	3	6	2	0	0	29
Rice	9	17	11	1	1	108	Arkansas	8	9	6	1	1	64
Texas	21	39	19	1	2	252	Baylor	3	9	5	1	1	70
Texas A&M	16	21	15	3	1	211	TCU	7	16	8	1	1	156
Arkansas	8	10	5	1	0	39	Notre Dame	9	10	6	2	0	83
Baylor	14	24	14	1	0	160	Total	55	85	47	9	6	706
TCU	10	14	6	3	0	37	2-Year Total	163	277	156	21	15	2067
Total	108	192	109	12	9	1361							

*Did not play in first two games of season against Wake Forest and Missouri.



VI-8155

GLASS and MIRROR CO.
 2614-22 Swiss Avenue — Dallas

Manufacturers of
 FINE MIRRORS (MODERN and ANTIQUE)
 LEADED ART GLASS WINDOWS
 FURNITURE AND DESK TOPS—
 PLATE GLASS FRONTS INSTALLED

Mrs. PAT H. McCray, Owner CHAS. L. WALKER, Mgr.

Where the Mustangs Go
LAUGHEAD PHOTOGRAPHERS
 Always Go!

Laughead
 means another fine picture

6411 Hillcrest

LAkeside - 3860 LOgan - 3397

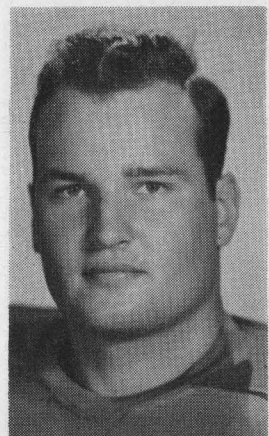
If It's



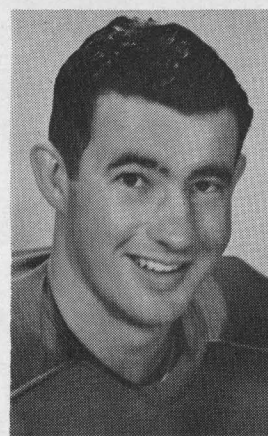
Borden's

It's Got to Be Good

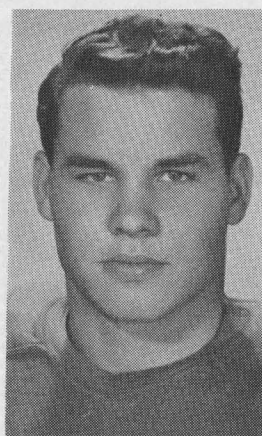
MILK-ICE CREAM



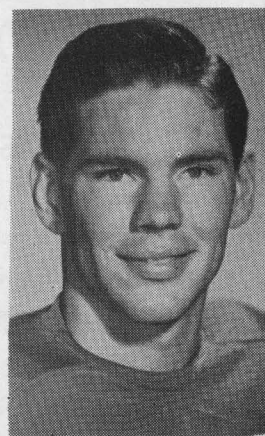
Wayne Ligon
Tackle (S.M.U.)



Jimmy Thompson
Guard (S.M.U.)



Don Cole
Center (S.M.U.)



Leland Mayo
Tackle (S.M.U.)

The Official Watch for Timing Today's Game is Longines—"The World's Most Honored Watch."



FRESH *twice* DAILY

S.M.U. Colors: CARDINAL RED and ROYAL BLUE



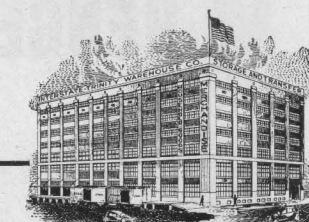
no. 1 specialist
in long-distance moving!

Interstate Trinity

WAREHOUSE COMPANY

R. E. ABERNATHY, President

J. A. METZGER, Vice President



301-05 NO. MARKET ST.

AGENTS ALLIED VAN LINES, INC.—LOCAL AND LONG DISTANCE MOVING

For SIGNALS and PENALTIES See Page 27

Congratulations To

Southern Methodist University

A FAST GROWING INSTITUTION

_____ *and To Its
Fine Football Team*



HENGER CONSTRUCTION COMPANY

DALLAS NATIONAL BANK BUILDING

PHONE RAndolph 8006

Compliments of

Fincher Construction Co.

DALLAS

STerling-2345

2523 McKinney Ave.

SMU Superlatives

First team—1915.

First opponent—Texas Christian University.

First victory—over Hendrix College.

Most consecutive losses—eleven in 1915 and 1916.

Most losses in one season—eight in 1916.

First championship—T. I. A. A. in 1918.

Highest game score by SMU—70 to 0 against Daniel Baker in 1920.

Highest game score against SMU—3 to 143 by Rice in 1916.

Most points scored by SMU team—288 in 1935.

First undefeated team—1923.

Most points scored against SMU team—452 in 1916.

Fewest points scored by SMU team—15 in 1921.

Fewest points scored against SMU team—9 in 1923.

Most teams held scoreless by SMU team—eight in 1935.

Most tie games played by SMU team—four in 1924 and in 1929.

Fewest games played by SMU team—six in 1918.

Most games played by SMU team—thirteen in 1935.

SMU teams held scoreless in most games—six in 1920 and in 1932.

Longest number consecutive games in which SMU scored—forty-two in 1946-47-48-49-50.

Longest number consecutive games in which SMU was held scoreless—four in 1916 and in 1925.

Biggest crowd to see SMU game—85,000 at Rose Bowl in January, 1936.

Longest trip made by SMU team—to San Francisco.

W R E S T L I N G

EVERY TUESDAY NIGHT

SPORTATORIUM

Cadiz and Industrial Blvd.

Ed McLemore, Promoter

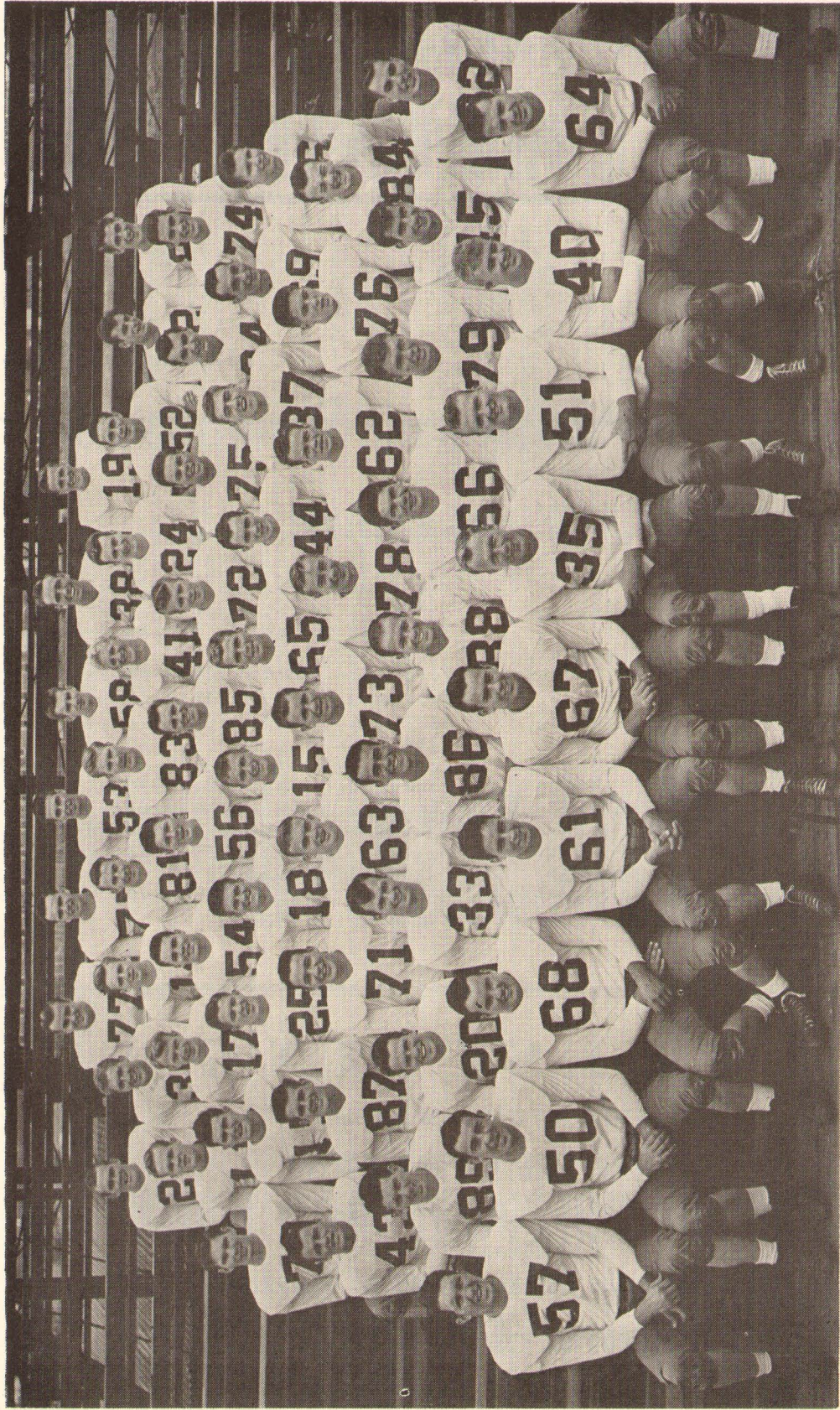
Tickets on Sale

Downtown Ticket Agency

CULLUM & BOREN CO.

1509 ELM STREET

PHONE RIVERSIDE 3434



☆

Front Row—Landers, Thompson, Ligon, Partee, H. Forester, Knight, Highlower, I. D. Russell, Robb
 Second Row—Hooks, Walker, H. Stollenwerck, White, Powell, Turk, Hendrickson, Gillis, Hawn
 Third Row—Roberis, Cox, Clem, Riley, Cadwallader, L. Miller, Lafitte, Cannon, Rippey
 Fourth Row—Mayo, Bernet, Moore, J. Crawford, Witt, Basquez, Norton, Hansen, McAtee, Crisler
 Fifth Row—Baird, Mills, Cole, Turpin, Litowkin, Archibald, Stewart, Ware, B. Crawford
 Sixth Row—Gunlock, D. Miller, S. Stollenwerck, Tunnell, Dean, Fargarson, H. Russell, Fox, Mitchell, Mahew
 Top Row—Quinn, Williams, Bowden, Passons, B. Forester, Winters

☆



Campus Favorites Choose *The Campus Favorite...PONTIAC!*

Pontiac is a favorite on the campus because of its year-round dependability as well as for its smart, distinctive styling. Pictured here with the sleek, powerful 1951 Pontiac Convertible are—left to right: Charlie Lutz, Captain of the 1950 Mustang Basketball Team, and now on Van Winkle's sales staff; "Cully" Culwell, Keeper of Peruna, famed mascot of the Mustangs; Campus favorites Gaynell Steelman, and Patty Bell, daughter of Athletic Director Matty Bell; Ken Grantham, quarterback on the 1948 Conference Championship team, and a member of Van Winkle's sales staff since his graduation from SMU.

Miss Bell, Miss Steelman, and Mr. Culwell are all enthusiastic owners of Pontiacs, two of which—the Pontiac Catalina and the Pontiac Station Wagon—are seen in the background. They'll tell you that: "Dollar for dollar, you can't beat a Van Winkle Pontiac!"

Van Winkle
 MOTOR CO.

**PONTIAC DEALER FOR
 GREATER DALLAS**

4023 OAK LAWN

Used Car Department

2000 North Olive



America's most
popular cigarette



FLAVOR

MILDNESS

