

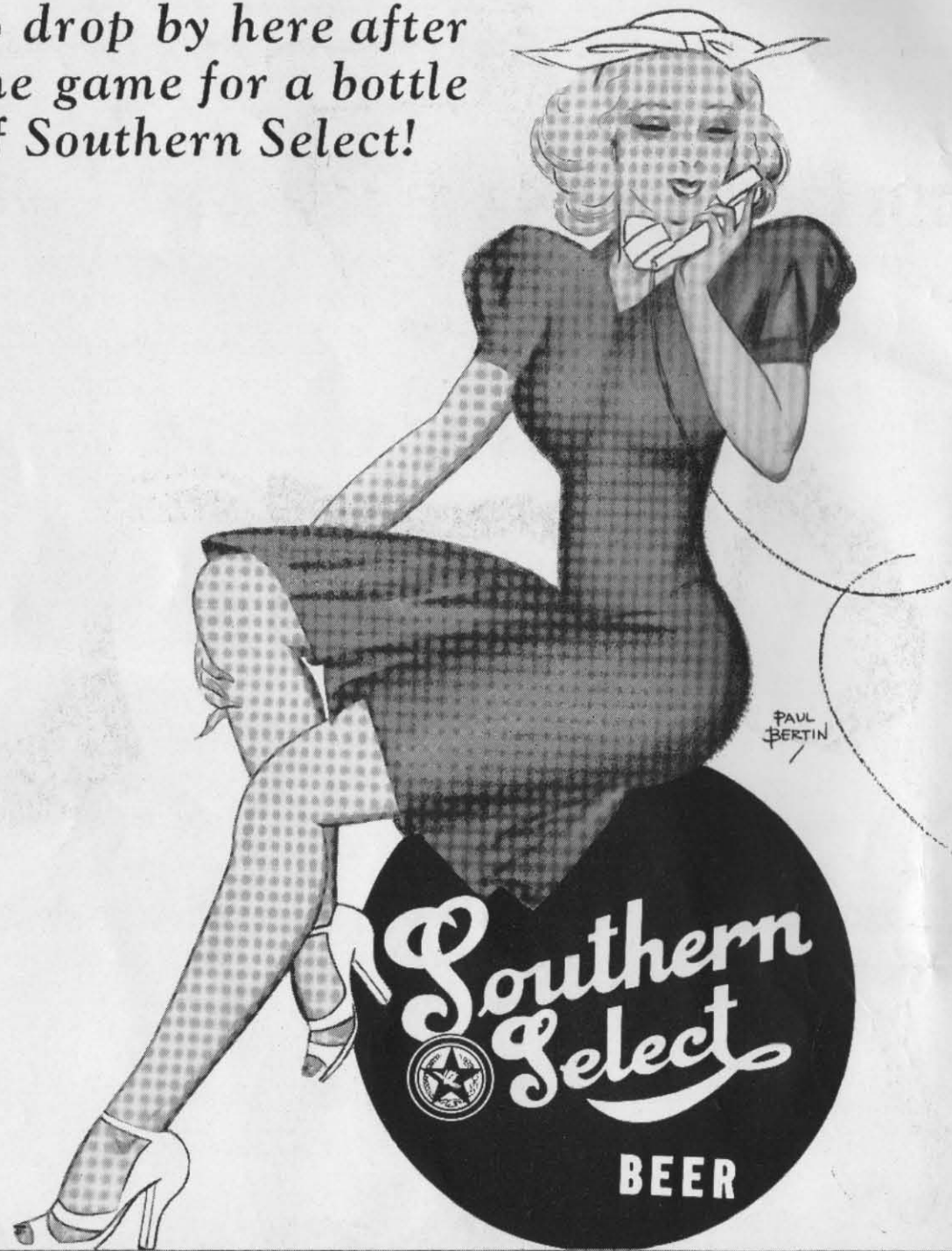
# RICE vs. SAM HOUSTON



OCTOBER 21, 1939

Price 25c

.. and tell the bunch  
to drop by here after  
the game for a bottle  
of Southern Select!



GALVESTON-HOUSTON BREWERIES, INC.

**T H E C H I C K E N S H A C K**

*Specializing in*

**LESLIE'S FRIED CHICKEN**

*"IT'S WORTH GOING MILES TO GET"*

**6 4 1 5 S O U T H M A I N S T R E E T**

*Invites your patronage when in DALLAS, WACO, AUSTIN AND SAN ANTONIO*



# Sam Houston State Teachers College

Huntsville, Texas

vs.

# Rice Institute

Houston, Texas

RICE FIELD

October 21, 1939

*Published by*  
The Rice Institute Athletic Association

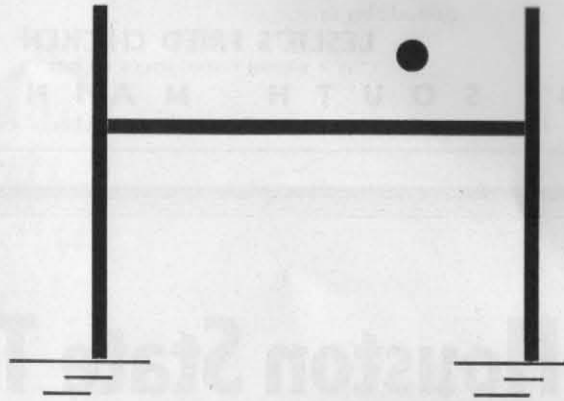
**BILL WALLACE**  
EDITOR AND MANAGER

**OFFICIAL**  
**FOOTBALL PROGRAM**

**Price 25c**

SOUTH TEXAS  
COMMERCIAL NATIONAL BANK

HOUSTON, TEXAS



## Putting it "Between the Posts" is what counts!

Anyone can kick a football. But with eleven men surging at full speed toward you, it takes a cool head, a well trained toe and perfect coordination of mind and muscle to put the ball between the posts . . . which is the only kick that counts.

So can anyone write an ad. But will it first be noticed . . . then read . . . and by its convincing sincerity cause the reader to act . . . to buy the product advertised. That is the kind of action you want . . . you must have to make your advertising investment profitable.

Our nineteen years experience in planning and producing the advertising for many Houston institutions has developed a perfect coordination of the how, when and where, which applied to your advertising will put it "between the posts" with prospective customers.

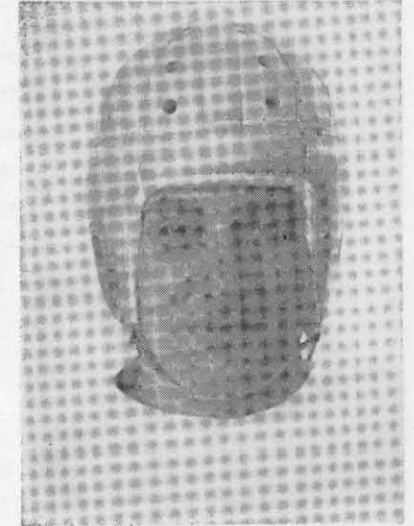
### ROGERS-GANO ADVERTISING AGENCY, INC. COMPLETE ADVERTISING SERVICE

DALE C. ROGERS, President  
T. PAGE, ROGERS, Vice-President

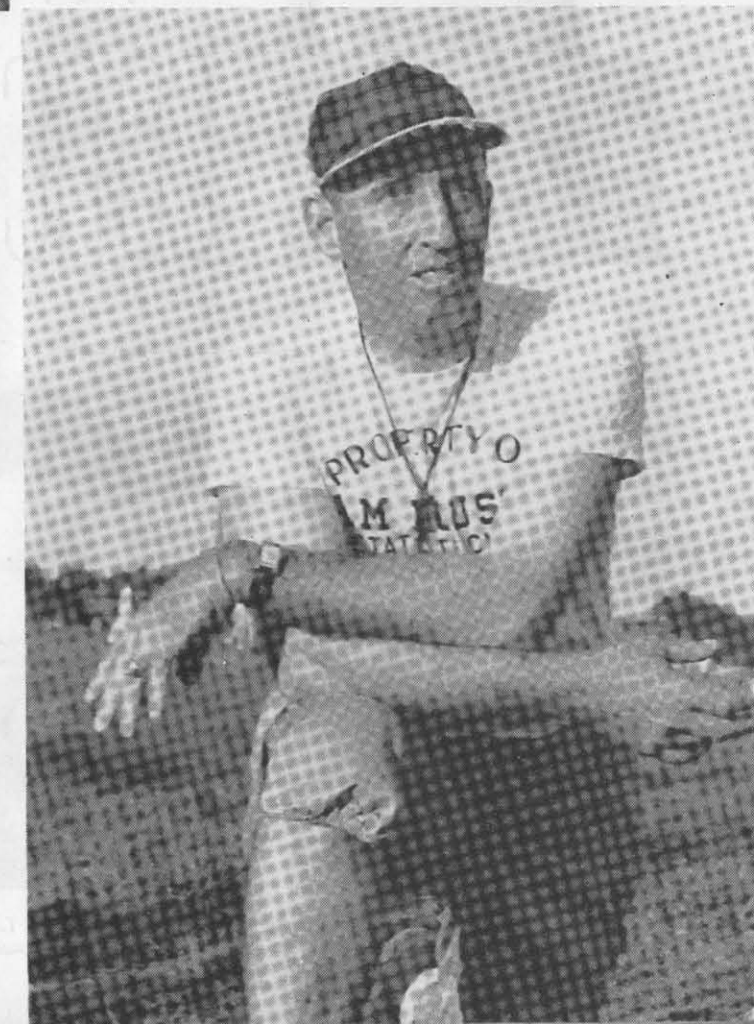
FAIRFAX 6301  
1305 PRAIRIE AVENUE



JIMMIE KITTS  
*Rice Institute*



CAPT. ED. SINGLETARY



PUNNY WILSON  
*Sam Houston*



CECIL GRIGG  
Backfield Coach



PERCY ARTHUR  
Ass't Line Coach



LOU HERTENBERGER  
Line Coach

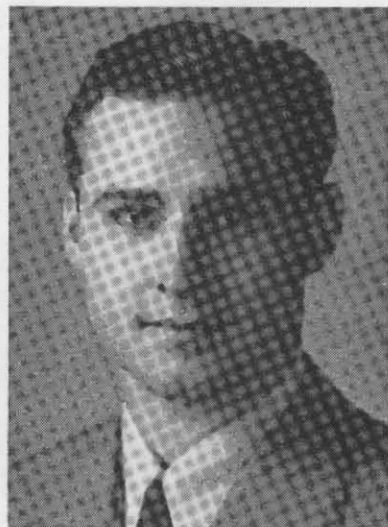


HERBERT ZEISIG  
Trainer

# RICE COACHES



GEORGE SCHOULTZ  
Student Football Manager



BILL WALLACE  
Freshman Coach



MATHEWS LANDRY  
Ass't Freshman Coach



BUSTER BRANNON  
Ass't Varsity Coach

S. S.  
**PRINCE**

8100 SOUTH MAIN

Intersection of Main and the  
Old Spanish Trail

Make Houston's most beautiful drive-in cafe your favorite place of refreshment after the game. You are always assured of courteous attention and appetizing food, whether you prefer to eat in the privacy of your own car, or in our attractive air-cooled dining room.

S. S.  
**PRINCE**

8100 SOUTH MAIN

Intersection of Main and the  
Old Spanish Trail

## Tonight's Game

Old friends and rivals of the gridiron meet again tonight here on Rice field when the Rice Institute Owls of the Southwest conference meet the Sam Houston Teachers College Bearkats of the Lone Star conference.

In fact, 27 years ago when each of the two schools was sponsoring its first football team, Rice and Sam Houston tangled for the first time. This makes the thirteenth meeting between the two teams, and each occasion has been marked by a kind of "rally" of Southeast Texans.

Tonight promises to be no exception, what with the Southwest conference team meeting Bearkats that definitely are on the upgrade of football's path under Coach Puny Wilson.

For color, the contest between these two neighboring Texas institutions will rival the leading games in the nation.

The famous Sam Houston Teachers band, led by a talented, sparkling drum major in Frances Handley, is the pride of Huntsville and East Texas, invited to more engagements than it can fulfill.

Vying with the Sam Houston organization will be the enlarged Rice band, biggest in the history of the school and under the direction of Kit Reid.

Aside from the two rivals of the night, the stands will be filled with the bands and

pep squads of Houston's high schools, St. Thomas, Kinkaid, and numerous other schools in the Houston area.

These will be the guests of Rice Institute for the night on the first "high school night" ever to be held at Rice field.

Rice has tried to make this a friendly and interesting gathering for its neighbors in Southeast Texas. So to friends from Huntsville, friends at home here in Houston, and to visitors, Rice offers its "Welcome." May your game be a happy one.

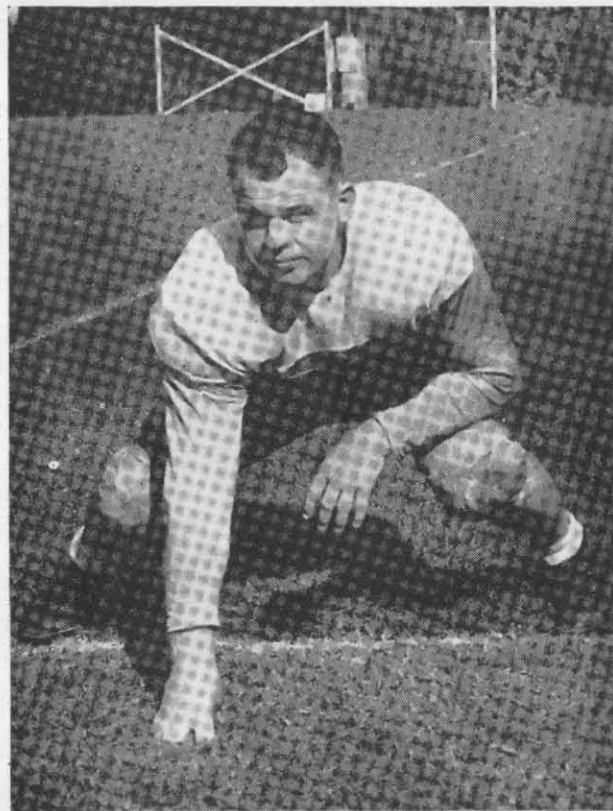
The Rice Institute is proud tonight to have as its guests many of the high school students in the Houston area, and to have a part in the celebration of National Father and Son Week.

As a gesture of interest, cooperation and friendship, the bands and drill squads of all high schools and junior high schools in Houston, Huntsville high from the home of Sam Houston Teachers College and numerous others are in the stands. Their colors identify them.

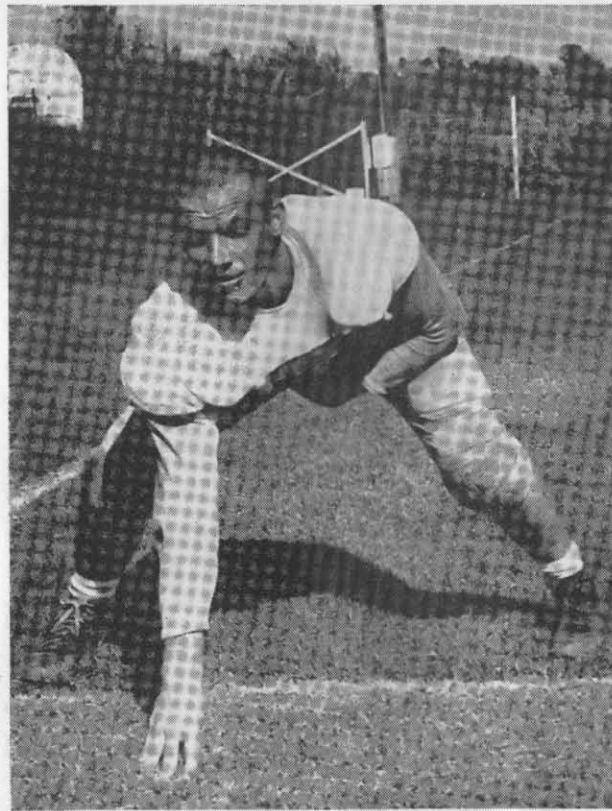
In Section H, you'll be able to tell the part of Houston's Y.M.C.A., Lions, Rotary, Optimist and Kiwanis clubs and Rice in Father and Son Week. "Junior" and his beaming dad are sitting over there.

The Rice Institute is happy to have you here.

*Drink* **Orange-Crush** *In the*  
**Crush** *BROWN*  
*BOTTLE*

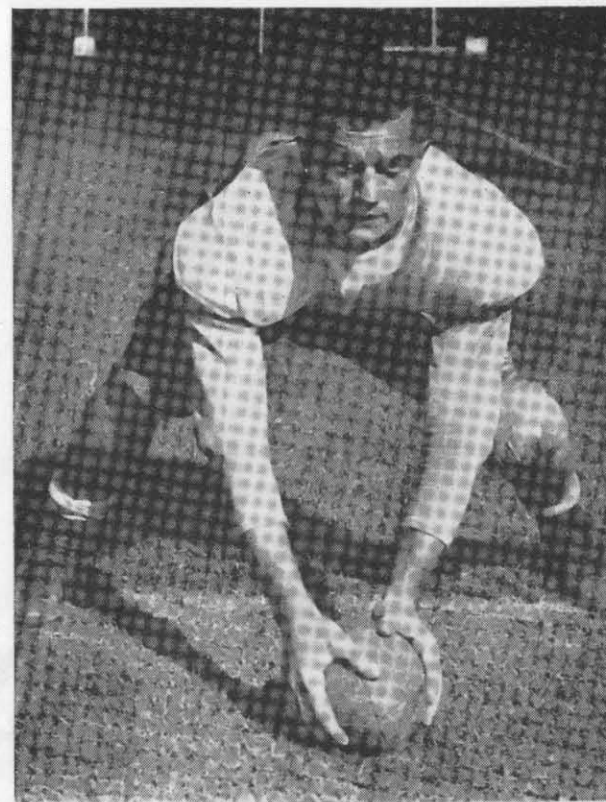


WALKER "BUCKET" PAINE

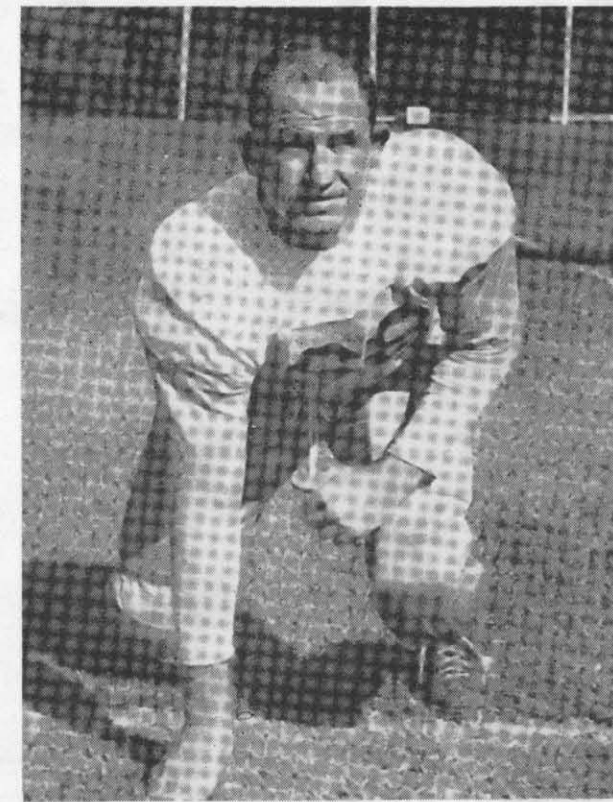


RAOUL "TINY" ESLINBAUM

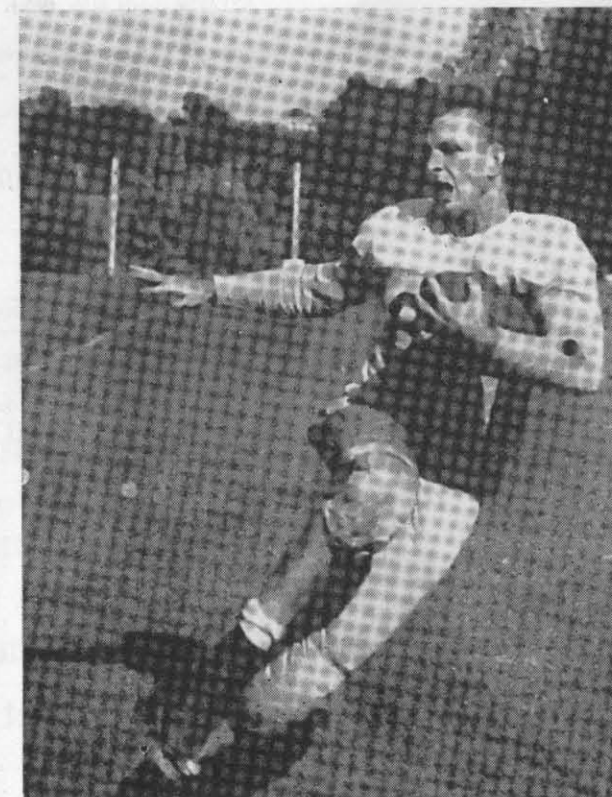
*Compliments of*  
**KIRBY PETROLEUM COMPANY**  
 HOUSTON, TEXAS



Co-CAPTAIN SONNY LINDLEY



CONRAD BROWN



Co-CAPTAIN CULLEN BARNETT

# "Pep them up" by TELEGRAPH



## Send PEP MESSAGES by WESTERN UNION

**20¢** LOCALLY **25¢** TO ANY WESTERN UNION POINT IN U. S.



HUBBARD "RED" LAW

### When Time Is Out . . .

- When play is for any reason suspended by the referee.
- When the ball goes out of bounds.
- After a touchdown, safety, or touchback has been made.
- During a try-for-point after touchdown.
- While the ball is being brought out for a kick-off.
- After a fair catch has been made.
- When a forward pass becomes incomplete.
- When the ball is declared dead by the referee after a foul has been called by any official, and subsequently during the enforcement or declination of the penalty.
- While teams are taking regular 2-minute "time-outs."
- During all substitutions, except when referee believes that offending team is trying to profit by making replacements in order to call for "time-out" after having exhausted three requests for this privilege which are allowed without penalty during each half.

**Time begins again when ball is actually put in play.**

### PUNTS

	KICKER	QUARTER				AV
		1	2	3	4	
RICE						
VISITORS						

### PASSES

		1	2	3	4	TOTAL
		ATTEMPTED				
COMPLETED NO. YARDS						
INTERCEPTED						
VISITORS	ATTEMPTED					
	COMPLETED NO. YARDS					
	INTERCEPTED					

### YARDS FROM SCRIMMAGE

	PENALTIES	PLAYER	1	2	3	4	NO.	TOTAL	SCORERS	PTS.
			RICE							
VISITORS										
RICE	KICK RETURNS									
VISITORS										
RICE	KICKOFFS									
VISITORS										

### SCORE

	1	2	3	4	TOTAL
	RICE				
VISITORS					

### FIRST DOWNS

	1	2	3	4	TOTAL
	RICE				
VISITORS					

## SAM HOUSTON FOOTBALL SQUAD OF 1939

No.	Name	Position	Wt.	Age	Exp.	Home Town
57	Clarke Tippen	E	160	20	2 L	Houston
58	Robert Barfield	B	150	20	2 L	Trinity
59	Ben Hightower	E	175	20	1 L	Beaumont
60	Sonny Lindley (Co-C)	C	180	22	2 L	Midway
61	Donece Ramsey	T	174	21	1 L	Center
62	E. J. Stansbury	T	195	21	1 V	Houston
63	Walker Paine	G	170	21	1 L	Palestine
64	Ike Metcalf	C	180	22	2 L	Tatum
65	George Lacy	G	175	20	1 L	Houston
66	Hubbard Law	B	195	18	1 L	Willis
67	Cecil Jackson	C	155	22	Jr.	Elgin
68	Conrad Brown	T	186	23	1 L	Lexington
69	Gilbert Knight	E	165	20	1 V	Corsicana
70	Louis Davis	G	170	22	1 L	Dallas
71	Odell Moore	T	195	20	2 L	Groveton
72	Victor Frnka	T	195	19	1 L	El Campo
73	Raymond Lang	E	175	21	Jr.	Bryan
74	Robert Bumgardner	G	210	20	Jr.	Waco
75	Isadore Wendel	E	185	21	1 V	El Campo
76	Grady Ramsey	E		20	1 L	Center
77	Phillip Crow	E	175	22	1 L	Brownsboro
78	James Hair	B	144	20	1 L	Gatesville
79	Laron Gifford	B	174	22	1 L	Kilgore
80	Jimmy Driskill	B	160	19	F	Crockett
81	Bruce Kivel	B	165	20	Jr.	Houston
82	Eugene Pollard	G	195	21	2 L	Edna
83	Leonard Brown	B	175	21	F	Marlin
84	Van Herron	B	170	20	Jr.	Mexia
85	J. L. Daniels	T	202	20	1 L	Houston
86	Nolan Dildy	B	210	22	Jr.	Elgin
87	Charles Luco	T	186	20	1 L	Wharton
88	Cullen Barnett (Co-C)	B	165	21	2 L	Pettus
89	Tiny Estlinbaum	T	190	21	2 L	Eagle Lake
90	Clyde Cannon	C	180	20	F	Stockdale
	Theofil Bohac	G	170	21	1 V	Richmond
	Joe Ricketts	B	160	22	Jr.	Gatesville
	Hack Miller	B	155	22	1 V	Longview
	Musgrove	G	165	20	F	Liberty

THE REIN CO. H. 3185

PRINTERS • LITHOGRAPHERS • BINDERS

---

DAY AND NIGHT SERVICE

## RICE VARSITY FOOTBALL SQUAD OF 1939

No.	Name	Position	Wt.	Ht.	Age	Years Exp.	Class	Home Town
10	Bassett, Livy	R. Guard	190	6-0	21	1	Jr.	Brenham, Texas
12	Mahan, Dearle	R. Guard	180	5-11	20	0	Soph.	Breckenridge, Texas
14	Haner, Bill	Q. Back	195	6-0	23	2-L	Sr.	Pampa, Texas
15	Tipton, Douglas	L. End	190	6-1	20	1	Jr.	Livingston, Texas
16	Husbands, Howell	Center	200	6-0	22	2-L	Sr.	Greenville, Texas
19	Clark, Bob	Q. Back	180	5-10	19	0	Soph.	New Braunfels, Texas
20	McDougle, Calvin	R. Half	175	5-11	19	0	Soph.	Corsicana, Texas
21	Matthews, J. P.	R. Guard	175	5-8	19	0	Soph.	Pampa, Texas
22	Brannon, Dick	R. End	190	6-1	20	1	Soph.	Longview, Texas
23	Everett, Jack	Q. Back	180	5-11	20	0	Soph.	Putman, Texas
24	Stanzel, Reinhart	R. Tackle	210	6-0	25	2-L	Sr.	Schulenburg, Texas
25	Woods, J. P.	L. Half	155	5-9	19	1	Jr.	Houston, Texas
26	Sloan, Buck	Center	180	6-1	19	0	Jr.	Breckenridge, Texas
27	Moore, W. C.	R. Half	174	6-1	21	1	Jr.	Bonham, Texas
28	Nobles, Andy	L. Guard	195	6-1	20	1-L	Jr.	Thornton, Texas
29	McCue, Joe	L. End	190	6-2	22	0	Soph.	St. Louis, Mo.
30	Brumley, Bob	L. Half	190	6-0	19	0	Soph.	Edinburg, Texas
31	Sadler, Mitchel	R. Tackle	205	6-2	18	0	Soph.	Huntsville, Texas
32	Green, J. R.	L. Tackle	210	6-2	23	2-L	Sr.	Pampa, Texas
33	Selman, Bert	F. Back	190	5-11	20	1	Jr.	Houston, Texas
35	DeWoody, Marvin	R. End	190	6-1	19	0	Soph.	Houston, Texas
38	Trager, Bill	L. End	205	6-2	18	0	Soph.	San Antonio, Texas
39	Mechler, Floyd	F. Back	185	6-0	21	1	Sr.	Hondo, Texas
40	Heard, Billy	L. Tackle	215	6-2	19	0	Soph.	Houston, Texas
41	Green, Stokes	F. Back	190	6-4	21	0	Jr.	Pampa, Texas
42	Hager, Don	L. Tackle	215	6-3	19	2-L	Sr.	Bay City, Texas
43	Smith, Bob	R. Tackle	210	6-4	20	1	Jr.	Eufaula, Texas
44	Price, Joe	L. Half	180	5-11	18	0	Soph.	New Castle, Texas
46	Smellage, Billy	F. Back	180	5-11	18	0	Soph.	Waxahachie, Texas
47	Bogard, Carl	L. Tackle	230	6-1	21	0	Soph.	Houston, Texas
48	Klosters, Albert	R. Tackle	205	6-4	19	0	Soph.	Dublin, Texas
50	Cline, Billy	L. Half	188	6-0	20	1-L	Jr.	Lake Charles, La.
52	Zander, Whitlock	F. Back	180	6-0	19	0	Soph.	San Antonio, Texas
53	Hartman, Fred	R. Guard	210	6-2	21	1-L	Jr.	Pampa, Texas
54	Stevens, Hugo	Q. Back	205	6-1	24	1-L	Jr.	Cleburne, Texas
55	Staley, Joe	R. Guard	195	5-11	20	0	Soph.	Cleburne, Texas
57	Singleary, Ed (Capt.)	L. Guard	215	6-2	22	2-L	Sr.	Wichita Falls, Texas
59	Beahan, Kermit	L. Guard	195	6-0	22	1	Jr.	Houston, Texas
60	Goforth, Arthur	L. Guard	200	5-11	19	0	Soph.	Wichita Falls, Texas
62	McGarahan, Pat	R. End	200	6-1	19	0	Soph.	Yoakum, Texas
63	Kunetka, Louis	R. Tackle	210	6-3	21	0	Soph.	Yoakum, Texas
64	Murphy, Paul	L. Tackle	220	6-4	21	1	Jr.	Oakdale, La.
65	Palmer, Harold	R. End	199	6-2	22	2-L	Sr.	Houston, Texas
66	Lain, Ernest	L. Half	220	6-0	21	2-L	Sr.	Mexia, Texas
67	White, Bob	L. Half	190	6-0	19	0	Soph.	St. Louis, Mo.
68	Brandon, Bob	L. End	185	6-2	21	1-L	Sr.	Ft. Worth, Texas
70	Cordill, Ollie	R. Half	190	6-2	23	2-L	Sr.	Big Spring, Texas
71	Robb, Billy	L. End	180	6-1	21	2	Sr.	Houston, Texas
72	Glassie, Earl	F. Back	200	6-0	23	1	Jr.	Kenedy, Texas
75	Suman, Don	R. Half	185	5-10	19	0	Soph.	Houston, Texas
76	Whitlow, Ken	Center	180	6-0	21	1-L	Jr.	Wichita Falls, Texas

Compliments of

JESSE H. JONES INTERESTS

# The Croydon

AN APARTMENT HOTEL

12 EAST 86th STREET

NEW YORK, N. Y.

★

Selected as hotel headquarters in New York City for Rice Institute athletic groups—an excellent home for Rice alumni residents of the city.



J. R. GREEN

## AFTER THE GAME . . .

Summers, like ball games, all come to an end, and winter's northers bring need for heating. Is your home secure against the damp and chill ahead?

Install better heating—vented and automatically controlled—and banish "winter-itis." You'll get a thrill from the unimagined comfort of it!



See your Heating Dealer now, or  
**HOUSTON GAS & FUEL**  
DIVISION OF  
**UNITED GAS CORPORATION**

**BETTER  
HEAT  
for  
BETTER  
HEALTH**

Drink  
**Coca-Cola**  
Delicious and  
Refresh

5B-300-66

You can laugh at distance or long hours at the wheel, if you stop now and then for the pause that refreshes, with ice-cold Coca-Cola. Along highways and byways it's always ready for you — ice-cold.

Better LIGHT - Better GRADES  
**Better GAMES!**

*Electricity  
is Cheap!*

# Sam Houston

LE	LT	LG	C	RG	RT	RE
Lang	Estlinbaum	Bumgardner	Lindley D. Ramsey	Dildy	G. Ramsey	
73	89	74	60	61	86	76

QB  
Barnett  
88

LHB  
Hightower  
59

RHB  
L. Brown  
83

FB  
Law  
66

### SQUAD LIST

No.	No.	No.	No.
57 Tippen, e	67 Jackson, c	76 Ramsey, e	85 Daniels, t
58 Barfield, b	68 Brown, t	77 Crow, e	86 Dildy, b
59 Hightower, e	69 Knight, e	78 Hair, b	87 Luco, t
60 Lindley, c	70 Davis, g	79 Gifford, b	88 Barnett, b
61 Ramsey, t	71 Moore, t	80 Driskill, b	89 Estlinbaum
62 Stansbury, t	72 Frnka, t	81 Kivel, b	90 Cannon, c
63 Paine, g	73 Lang, e	82 Pollard, g	Bohac, g
64 Metcalf, c	74 Bumgardner	83 Brown, b	Ricketts, b
65 Lacy, g	75 Wendel, b	84 Herron, b	Miller, b
66 Law, b			Musgrove, g

### OFFICIALS

Referee.....Lowrance  
Umpire.....Hart

# Rice

LE	LT	LG	C	RG	RT	RE
Brandon J. R. Green	Goforth	Husbands	Bassett	Stanzel	Palmer	
68	32	60	16	10	24	65

QB  
Stevens  
54

LHB  
Brumley  
30

RHB  
Suman  
75

FB  
Mechler  
39

### SQUAD LIST

No.	No.	No.	No.
10 Bassett, g	28 Nobles, g	43 Smith, t	62 McGarahan
12 Mahan, g	29 McCue, e	44 Price, b	63 Kunetka, t
14 Haner, b	30 Brumley, b	46 Smellage, b	64 Murphy, t
15 Tipton, e	31 Sadler, t	47 Bogard, t	65 Palmer, e
16 Husbands, c	32 Green, t	48 Klosters, t	66 Lain, b
19 Clark, b	33 Selman, b	50 Cline, b	67 White, b
20 McDougale, b	35 DeWoody, e	52 Zander, b	68 Brandon, e
21 Matthews, g	36 Sullivan, t	53 Hartman, g	70 Cordill, b
22 Brannon, e	38 Trager, e	54 Stevens, b	71 Robb, e
23 Everett, b	39 Mechler, b	55 Staley, g	72 Glassie, b
24 Stanzel, t	40 Heard, t	57 Singletery, g	73 Taylor, b
25 Woods, b	41 Green, b	59 Beahan, g	75 Suman, b
26 Sloan, c	42 Hager, t	60 Goforth, g	76 Whitlow, c

### OFFICIALS

Linesman.....Dayvault  
Field Judge.....Fischer

*Time Out...*

light up with



Chesterfield  
*They Satisfy*



IN  
BOTTLES  
IT'S  
BETTER  
•  
*Every Bottle Sterilized.  
Visitors Always Welcome.*

**UNION BOTTLING WORKS**

PHONE PRESTON 0366

38 RIESNER AVENUE

*After the Game . . .  
let's go*

**ICE SKATING**

**AFTERNOON AND EVENINGS**

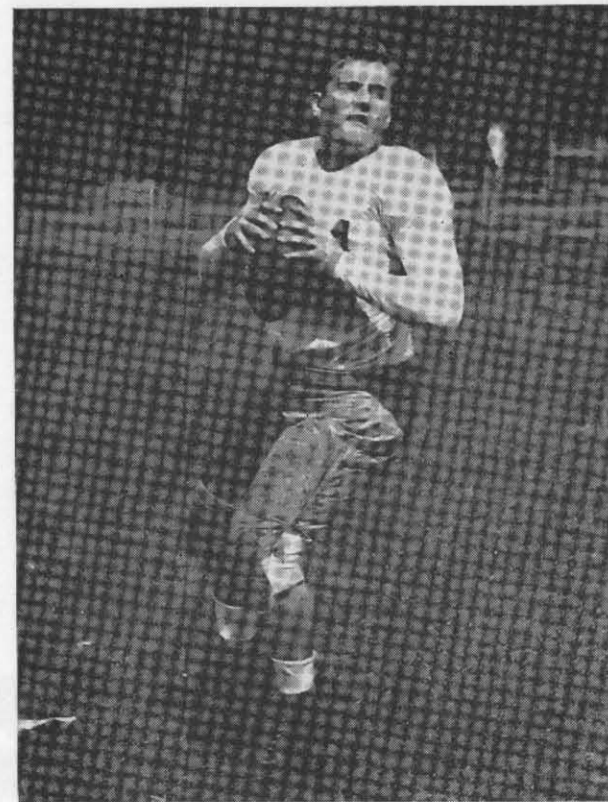
**POLAR WAVE ICE PALACE  
HUTCHINS AND MCGOWAN**

*After the Game . . .*

**DINNER  
at the  
WARWICK**

Complete table d'hote  
dinner 90c up

A TREAT YOU CAN AFFORD



JOE PRICE



MARVIN DEWOODY

**Leather combination  
sports sweaters  
by Puritan**

Famous sportswear in the new  
trend-to-leather . . . by a maker of  
national reputation.

Jacket type sweater with leather  
buttons and dark suede front, brushed  
wool back and sleeves. Trimmed flap  
pockets of generous capacity.

men's shop

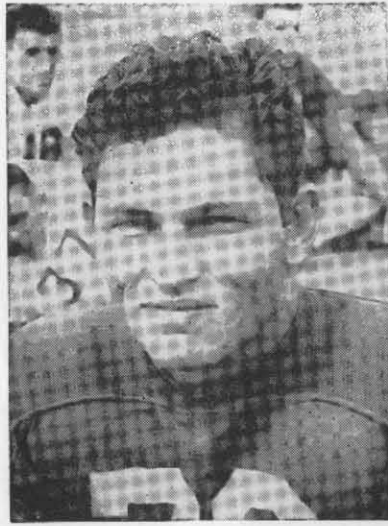
**Goley Bros.**  
main floor



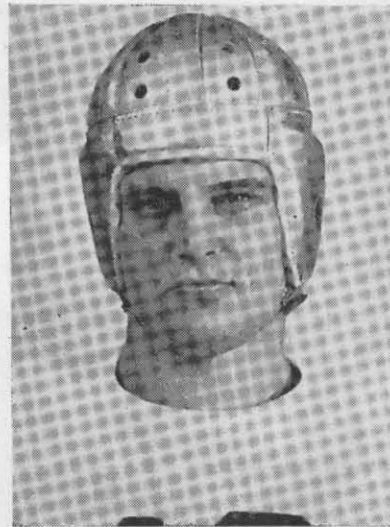
**4.95**



Ollie Cordill



Kenneth Whitlow

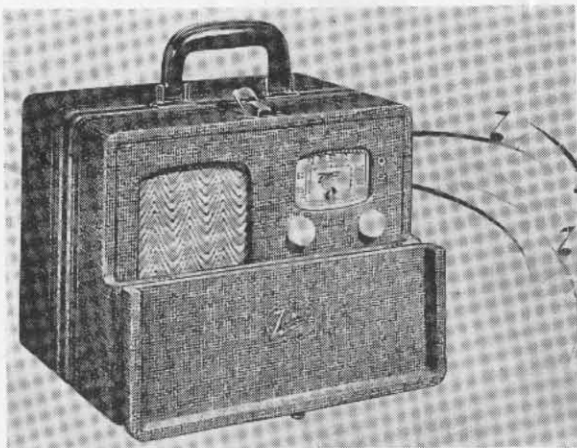


Livy Bassett

*Next Home Game*

**ARKANSAS UNIVERSITY**  
**NOVEMBER 11, 2:30 P.M.**

**Take it to All Games**



**Zenith Portable Radio**

Operates on Zenith dry battery pack or house current; has Zenith detachable wave magnet; 5 tubes; 5 1/2 inch speaker, for standard broadcasts, only . . . . . **\$34<sup>95</sup>**

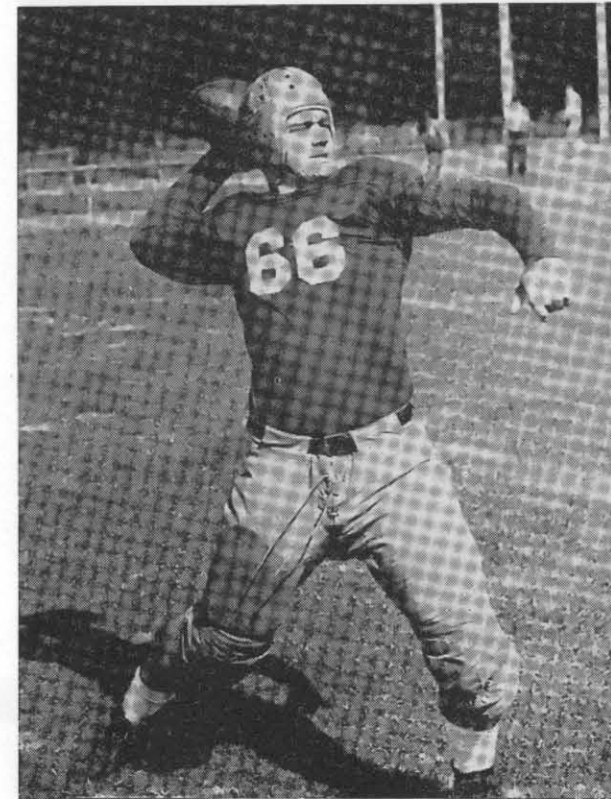
**Star Electric & Eng. Co.**

613 Fannin St.

1914 Main St.



DON SUMAN



ERNIE LAIN



OLLIE CORDILL



**FOOTBALL GAMES**

The Humble Company urges you to go to as many football games as you can—high school, college and university—and invites you to stop for service on your way at Humble Service Stations.

Restrooms are noted for their cleanliness (most of them are tiled); there's free ice water for yourself, free air and water for your car; even first aid kits and fire extinguishers have been provided. Accurate highway information is furnished promptly and courteously—no pains are spared to speed you comfortably on your way.

Above all, your car gets the trained attention it needs to keep it running right and looking good. Humble products—motor fuels, motor oils, special products—are second to none in performance.

Follow the Humble route to football games—stop for service where you see the Humble sign!

**HUMBLE OIL & REFINING CO.**

*A Texas institution manned by Texans*

1939 FOOTBALL SCHEDULE

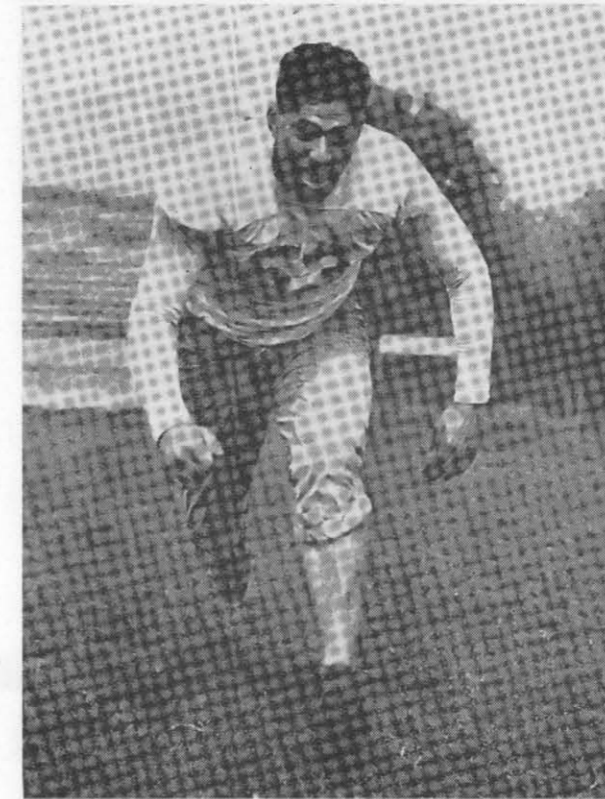
Date	School	Place	Time
Sept. 30	Vanderbilt University	Houston	8:00 p.m.
Oct. 7	Centenary College	Houston	8:00 p.m.
Oct. 14	L. S. U.	Baton Rouge, La.	8:00 p.m.
Oct. 21	Sam Houston State Teachers College	Houston	8:00 p.m.
Oct. 28	Texas University	Austin	2:30 p.m.
Nov. 4	Fordham University	New York City	2:00 p.m.
Nov. 11	Arkansas University	Houston	2:30 p.m.
Nov. 18	A. & M. College	Houston	2:30 p.m.
Nov. 25	T. C. U.	Fort Worth	2:30 p.m.
Dec. 2	Baylor University	Houston	2:30 p.m.
Dec. 9	S. M. U.	Dallas	2:30 p.m.

1938 FOOTBALL SCORES

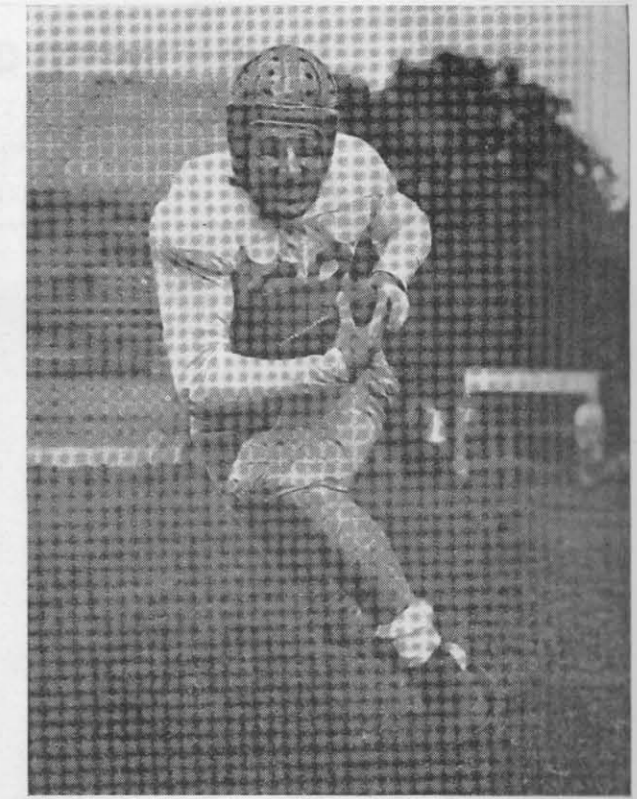
Rice	Opponent	Score
6	Oklahoma University	7
0	L. S. U.	3
17	Tulane University	26
13	Texas University	6
14	Auburn	0
3	Arkansas University	0
0	Texas A. & M. College	27
7	T. C. U.	29
6	Baylor University	21
25	S. M. U.	14

FOR RICE'S HONOR

For Rice's honor, Rice's glory,  
 We will fight on,  
 We will be fighting  
 When this day is done  
 And when the dawn comes, we will  
 Still be fighting on, Rice,  
 For the Gray and Blue,  
 We will be loyal  
 To Rice be true.



FRED HARTMAN



WHITLOCK ZANDER

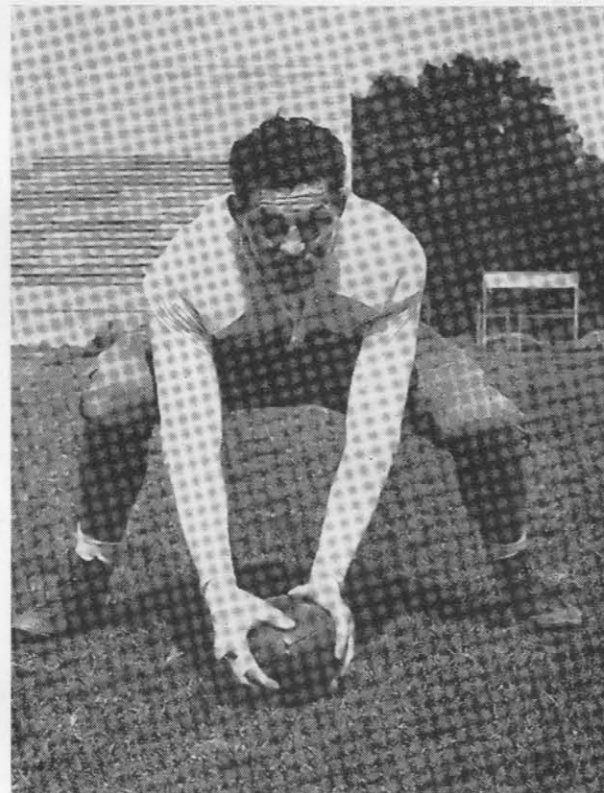
**ZIP!**  
*and it's open!*

Old Gold's amazing  
 New "ZIP-TOP" Pack  
 Opens quick as a wink!  
 You get fresh  
 Double-Mellow Old Golds  
 In a flash! Try  
 The "ZIP-TOP" Pack today!

**O.G.'s new "ZIP-TOP" pack**  
**FRESH Cigarettes in a FLASH!**

Copyright, 1939, by P. Lorillard Co.

Now . . . **DOUBLE "CELLOPHANE"**  
 opens **DOUBLE QUICK** . . . 2 Jackets sliced in 1 ZIP!



KEN (TUFFY) WHITLOW

"R" ASSOCIATION

The flowering vines, roses and shrubs  
 planted in front of the Field House and  
 around the stadium were donated by the  
 "R" Association.

The "R" Association is a group of  
 former Rice students who earned letters  
 in various athletic sports.

"GO WESTERN  
 YOUNG MAN"

"BAR-H" JEWELRY  
 by HICKOK

So you can put on  
 the "Dogie" this fall.

Tie Chains \$1.00  
 Tie Bar \$1.00  
 Key Chain \$1.50

**LEOPOLD & PRICE**  
 . . . 805 MAIN

ERNEST BLACK

# BLACK-BROLIER, INC.

BUILDING MATERIALS . . . ROCK LIME MORTAR

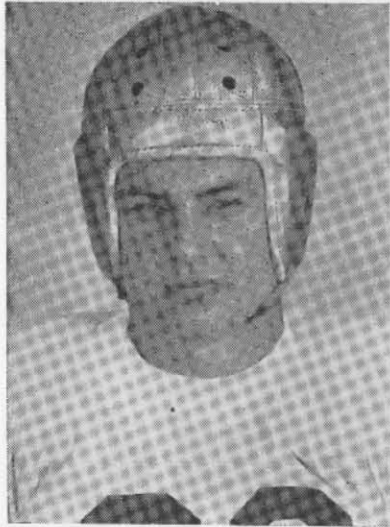
LEE BROLIER

*Our Brick adds to the Beauty of the New Rice Stadium*

803 BLODGETT ST.

HOUSTON, TEXAS

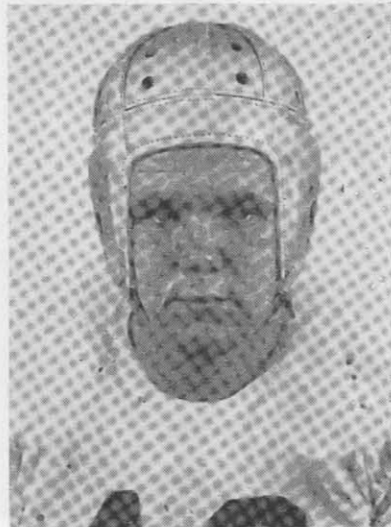
PHONE HADLEY 2103



Buck Sloan



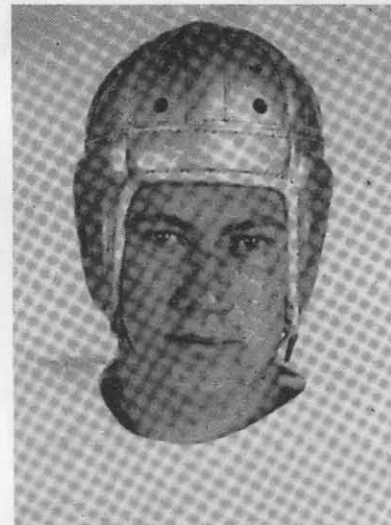
Bob Smith



Billy Heard



Floyd Mechler



Louis Kunetka



Earl Glassie

## J. J. SWEENEY JEWELRY CO.

700 MAIN CORNER CAPITOL

VERNON C. FREDERICK  
President

# FREDERICK PRODUCE CO., Inc.

PHONE P. 3221  
L. D. 94

*Oldest and Largest Poultry and Egg Dealer in Houston*

209 SECOND STREET  
*Direct in Rear of M. & M. Bldg.*

ESTABLISHED 1896

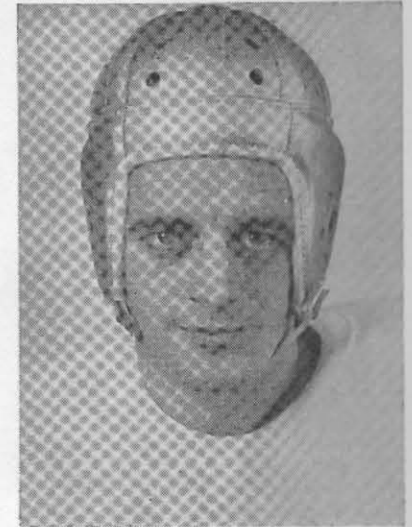
HOUSTON, TEXAS



Douglas Tipton



Bill Haner



W. C. Moore

## *More of Moore*

"Speedy's" brilliant playing against the Centenary Gents exposed a pass snatcher destined to be an influential factor in the Owl's bid for the Conference Championship. Let's have more of Moore!

## Great Southern Life Insurance Company

E. P. GREENWOOD, President

Home Office

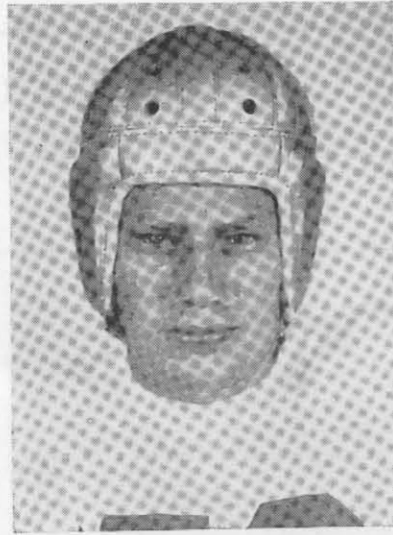
Houston, Texas

There's  
no finer  
beer at  
any price

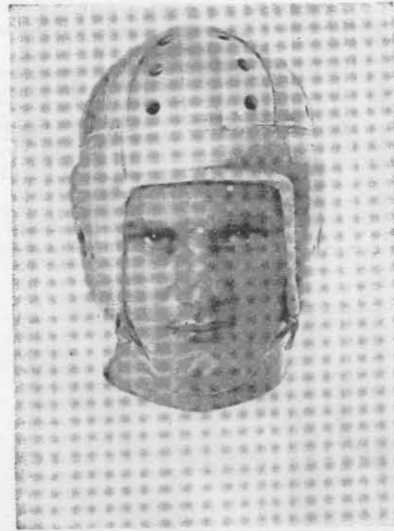
... that's why

IT'S TEXAS'  
LARGEST  
SELLER

**GRAND  
PRIZE**



Moose Hartman



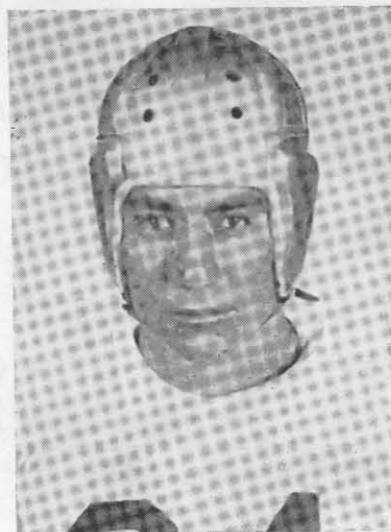
Don Hager



Paul Murphy



J. R. Green



Hugo Stevens



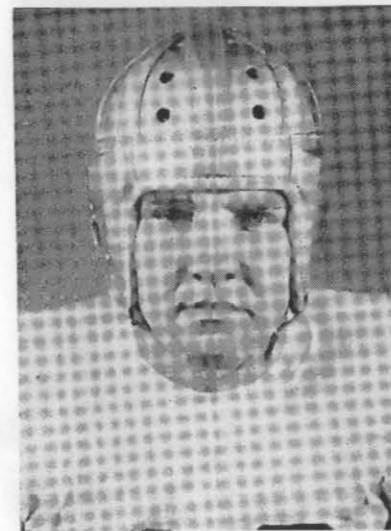
Earnest Lain



Keep in Shape with

**SANITARY FARM DAIRIES MILK**

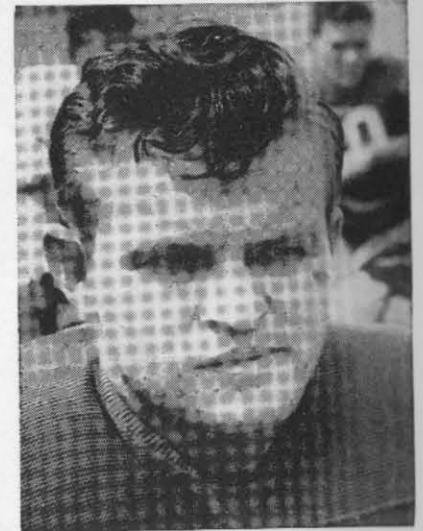
Extra Care Makes It Extra Good



Bert Selman



Stokes Green



Reinhart Stanzel

*Celebrate Tonight*

AT HOUSTON'S GLORIOUS  
NEW RENDEZVOUS  
FOR THE PLEASURE-  
SEEKERS OF THE SOUTH

*The* **Empire Room**

**RICE HOTEL**

★ ★ ★ ★ Music by ★ ★ ★ ★

**GEORGE HAMILTON**

and his famous **ORCHESTRA**

Playing for Luncheon and Dinner Daily  
Dancing Nightly 'Til 1 A. M. ★ Saturdays 'Til 2 A. M.

Meet your  
Friends  
in the  
EMPIRE  
ROOM  
LOUNGE



Dinner Guests  
May Remain  
for Dancing  
Without  
Cover Charge  
Except  
on  
Saturday.

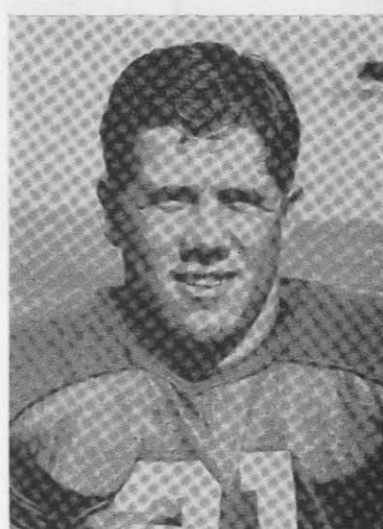
The *Fashion*  
 917-19-21 MAIN STREET  
 South Texas Center of Authentic Fashions



Jack Everett



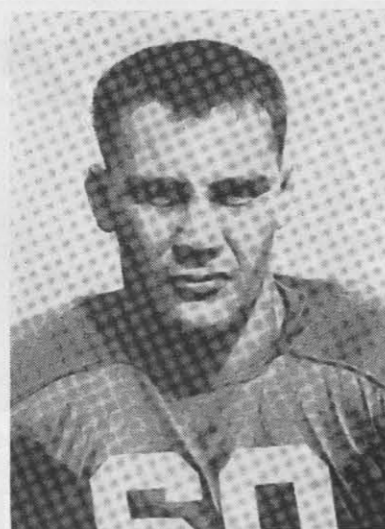
Mitchel Sadler



J. P. Mathews



Calvin McDougle



Arthur Goforth



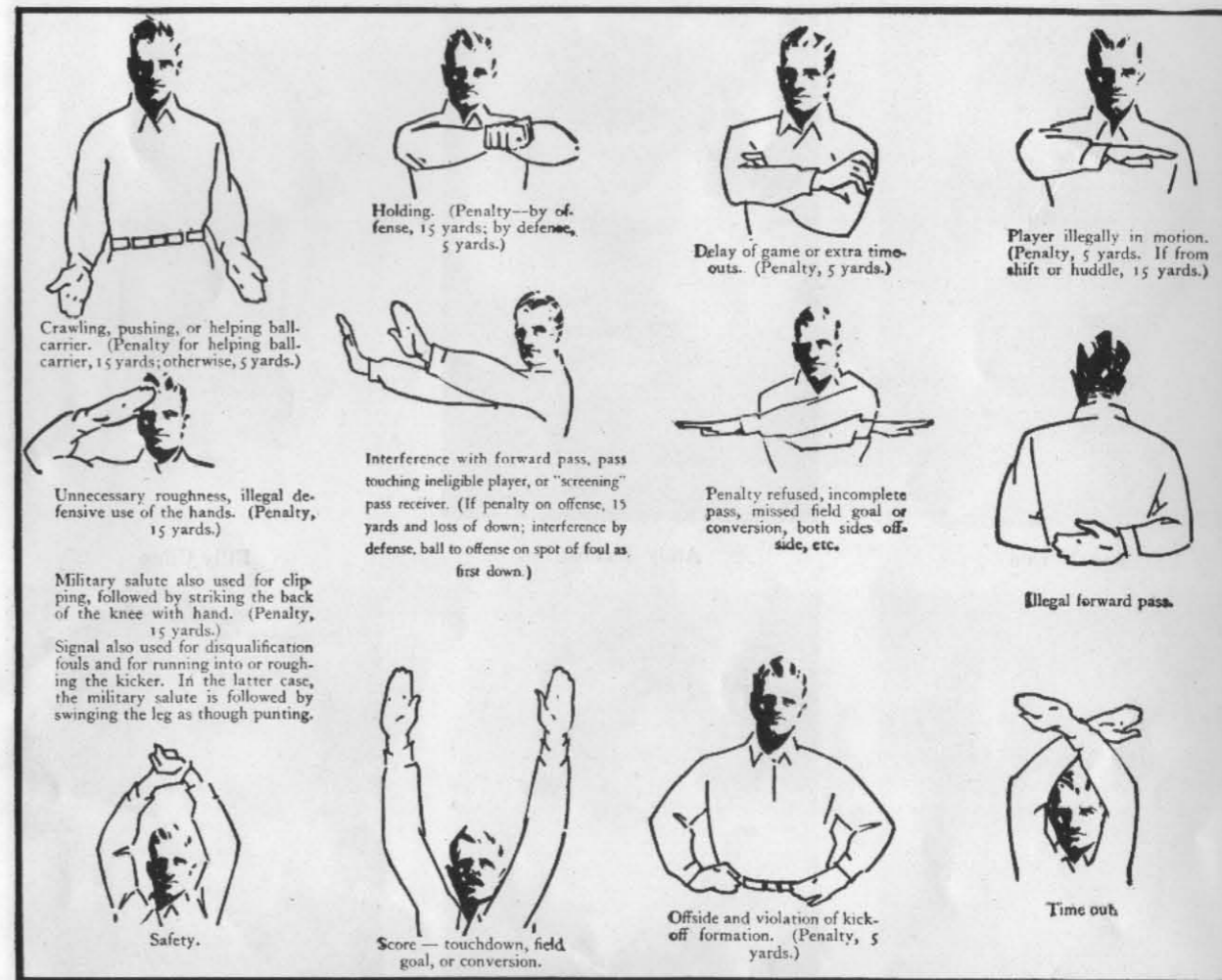
Bob Brumley

"WE ARE WITH YOU"  
**BLALOCK-McCALL LUMBER CO.**

3219 LEELAND AVE.

"WE PLEASE YOU"

PHONE F. 7368



## Penalties

- 1 Taking more than three times out during either half
- 2 Illegal delay of game
- 3 Failure of substitute to report to umpire
- 4 Violation of kick-off formation

### LOSS OF FIVE YARDS

- 5 Failure to maintain proper alignment of offensive team before ball is snapped. Also, backfield man illegally in motion
- 6 Offside by either team, or encroachment on neutral zone
- 7 Attempt to draw opponents offside

- 8 Taking more than two steps with ball after signaling for fair catch
- 9 Illegal use of hands and arms by defensive players
- 10 Flying block or flying tackle
- 11 Running into kicker
- 12 Crawling by the runner

### LOSS OF FIFTEEN YARDS

- 13 Team not ready to play at scheduled time
- 14 Substitute communicating with teammates before ball is put in play
- 15 Illegal substitution (Player also suspended from game)
- 16 Failure to stop at least one second on shift play
- 17 Forward pass by member of team which did not put ball in play

- 18 Forward pass touched by ineligible player
- 19 Intentional grounding of forward pass
- 20 Interference by member of passing team with defensive player eligible for pass
- 21 Interference with fair-catch or tackling player before ball is caught
- 22 Illegal use of hands and arms by offensive players

- 23 Defensive player striking opponent above shoulders
- 24 Roughing the kicker
- 25 Piling up, hurdling, clipping
- 26 Tackling player out of bounds
- 27 Coaching from the sidelines
- 28 Illegal interference with defense by passing team

### OTHER PENALTIES

- 29 Striking, kneeling, or kicking opponent—half the distance to the goal and disqualification of offending player
- 30 Foul within one yard line—half the distance to the goal

- 31 Interference by defensive team on forward pass—first down for passing team at spot of foul

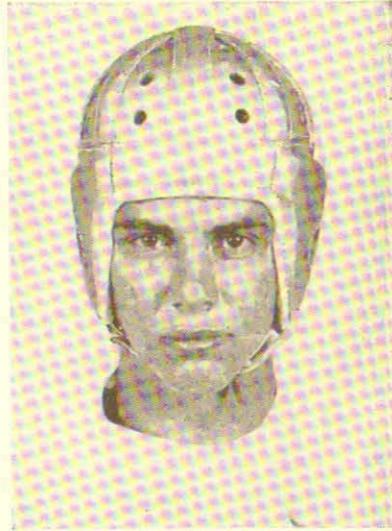
- 32 Flagrant roughing of kicker—disqualification, plus fifteen yards
- 33 Flagrant unsportsmanlike conduct—disqualification, plus fifteen yards.



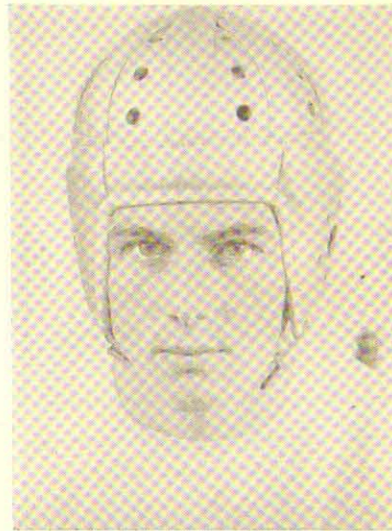
Joe McCue



Andy Nobles



Billy Cline



J. P. Woods



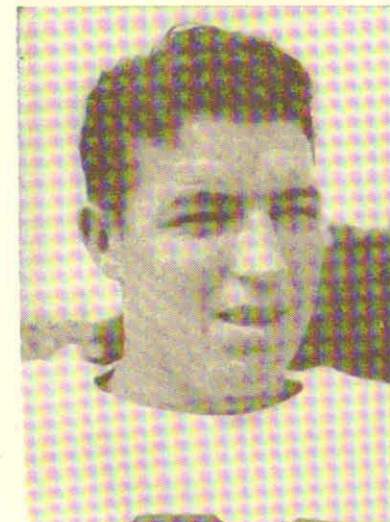
Bob Brandon



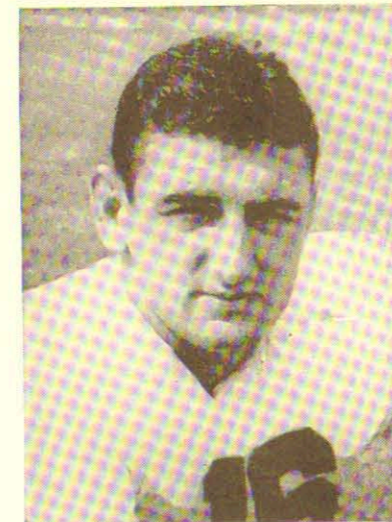
Harold Palmer



Pat McGarahan



Dick Brannon



Howell Husbands



"HOUSTON'S BEST SHOP FOR MEN  
AND WOMEN WHO SHOP FOR MEN"

EXCLUSIVE  
SOUTH TEXAS  
DEALER FOR

CAVANAUGH HATS  
"THE WORLD'S FINEST"

ROGERS-PEET & CO.  
"FINE SUITS & TOP COATS"

BURBERRY ENGLISH OVERCOATS  
"FAMOUS ALL OVER THE EARTH"

*Exclusive*

HOUSTON TICKET OFFICE  
ALL RICE INSTITUTE  
FOOTBALL GAMES  
Phone Preston 4198  
For Reservations

"Houston's Best Shop for Men"  
**Norton's**

Barringer-Norton Co.

506 Main St.

*Featuring*

Ready-to-Wear Suits . . . . . \$30 to \$65  
Ready-to-Wear Overcoats . . . . . \$25 to \$65  
Burberry English Overcoats . . . . . \$75  
Suits Made to Order . . . . . \$35 to \$75  
Suits tailored to measure—in our own shops  
—as fine as clothes can be made

**\$85.00 to \$120.00**

Courtland Hats . . . . . \$5  
"Our Feature Value"  
Cavanaugh Hats . . . . . \$10 to \$20  
"The World's Finest"

—and a most complete stock of new and  
authentic styled furnishing goods for  
gentlemen.

# Camel

**— MORE PLEASURE  
PER PUFF — MORE PUFFS PER PACK**

**PENNY  
FOR PENNY  
YOUR BEST  
CIGARETTE  
BUY**



Copyright, 1939, R. J. Reynolds Tobacco Company, Winston-Salem, N. C.



**Long-Burning  
Costlier Tobaccos**

**By burning 25% slower than the average  
of the 15 other of the largest-selling  
brands tested—slower than any of them—  
CAMELS give a smoking *plus* equal to**

**5 EXTRA SMOKES  
PER PACK**